

FROMM

**ELS FS400/FS401 FROMM
TURNTABLE STRETCH MACHINE
ELS.1030_Rev01
Version 05 machines**

Print date Monday, 07 July 2014/ servisia/ © 07/14

MODEL : FROMM FS 400

MODEL : FROMM FS 401

Copy of this document, and giving it to other and the use or communication liable to the payment of damages. All rights are reserved in the event of the grant of a patent or the registration of a utility model or design.

PROGETTO
BANCA DIS.
TPICO

01 DESCRIPTIONS
02 CHANGE FROM ATV31 TO ATV32
03 modif. to control cutting system

05/05/06 M.G.
28/04/11 L.B.
04/07/14 S.S.

DATA 05/12/05
DISEGN MORANDO G.
VISTO

24V AC
24V DC

BLACK
LIGHT BLUE
RED
BLUE
YELLOW-GREEN

N07V-K/1,5mm²
N07V-K/1,5mm²
N07V-K/0,5mm²
N07V-K/0,5mm²
N07V-K/1,5mm²

POWER CONDUCTORS
NEUTRAL CONDUCTORS
CONTROLS / SIGNALS
ALTERNATING CURRENT
CONTROLS / SIGNALS
DIRECTING CURRENT
GROUND CONDUCTORS

KIND OF CIRCUIT

COLORS
CONDUCTORS

MINIMUM
SECTION

TENSIONE
POWER SUPPLY
230V ac

POTENZA INSTALLATA
INSTALLED POWER
1,8kW

CORRENTE
CURRENT
8A

FROMM WRAPPING SYSTEMS S.r.l.
Caprino Veronese (VR)
ITALY

ELS.1030_Rev01

FOGLIO
1
T.F. 11

FILE ELS.1030_Rev01.dwg

ELS.1030_Rev01
FC: 01
F.S.02
F.T. 11

FS400/FS401

FILE ELS.1030_Rev01.dwg

SOST. IL :
SOST. DA :

3
4

2
2

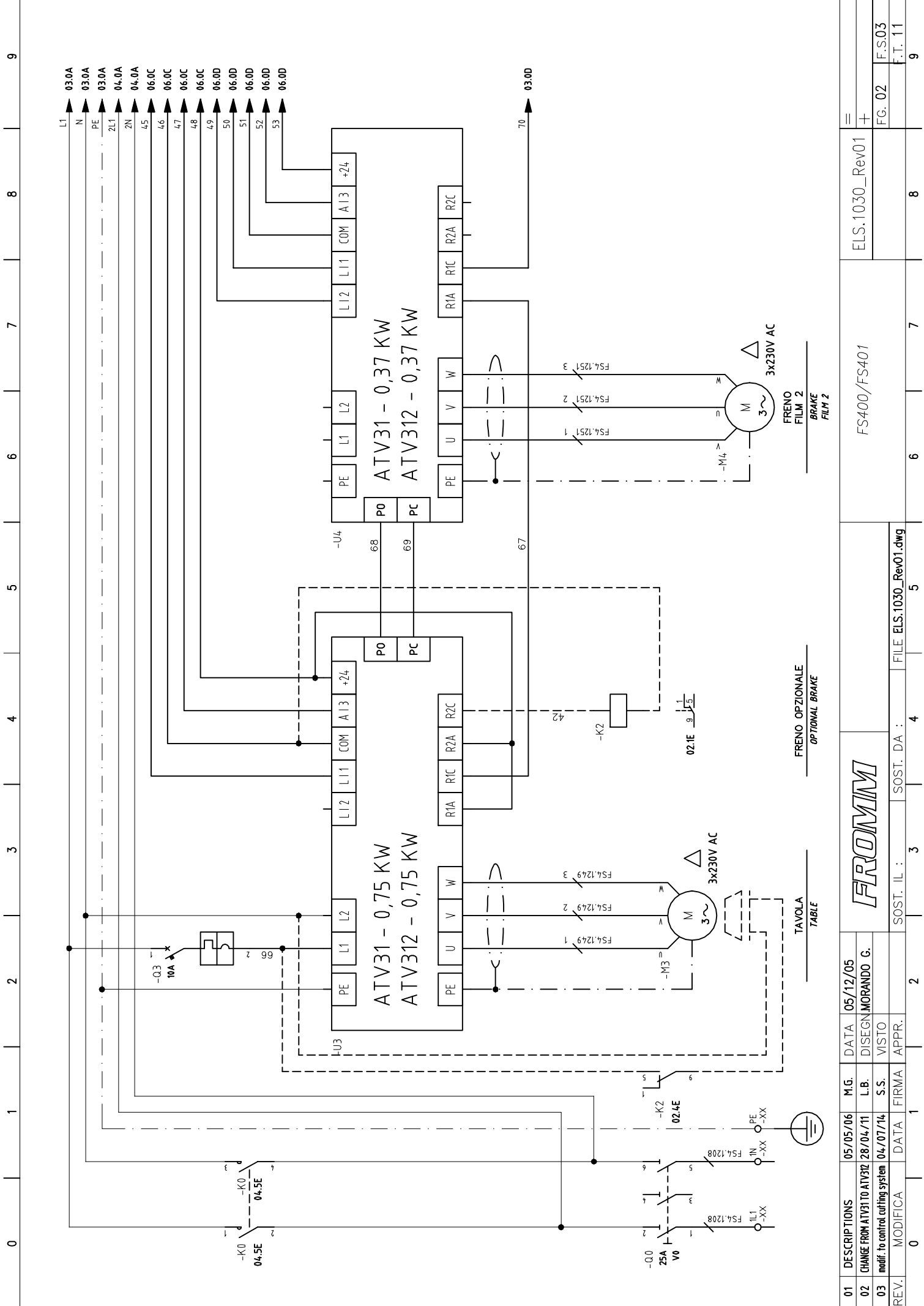
1
1

0
0

REV.

0
1
2
3
4
5
6
7
8
9

A
B
C
D
E
F



REV.	MODIFICA	DATA	FIRMA	APPR.	SOST. IL :	3	SOST. DA :	4	FILE	ELS.1030_Rev01.dwg	5	FS400/FS401	ELS.1030_Rev01	8	FC: 02	F.S.03	F.T. 11	9
01	DESCRIPTIONS	05/05/06	M.G.	DATA	05/12/05													
02	CHANGE FROM ATV31 TO ATV312	28/04/11	L.B.	DISEGN	MORANDO G.													
03	modif. to control cutting system	04/07/14	S.S.	VISTO														

FROMM

FRENTO FILM 2
BRAKE FILM 2

FRENTO FILM 2
BRAKE FILM 2

FRENTO FILM 2
BRAKE FILM 2

FRENTO FILM 2
BRAKE FILM 2

FRENTO FILM 2
BRAKE FILM 2

FRENTO FILM 2
BRAKE FILM 2

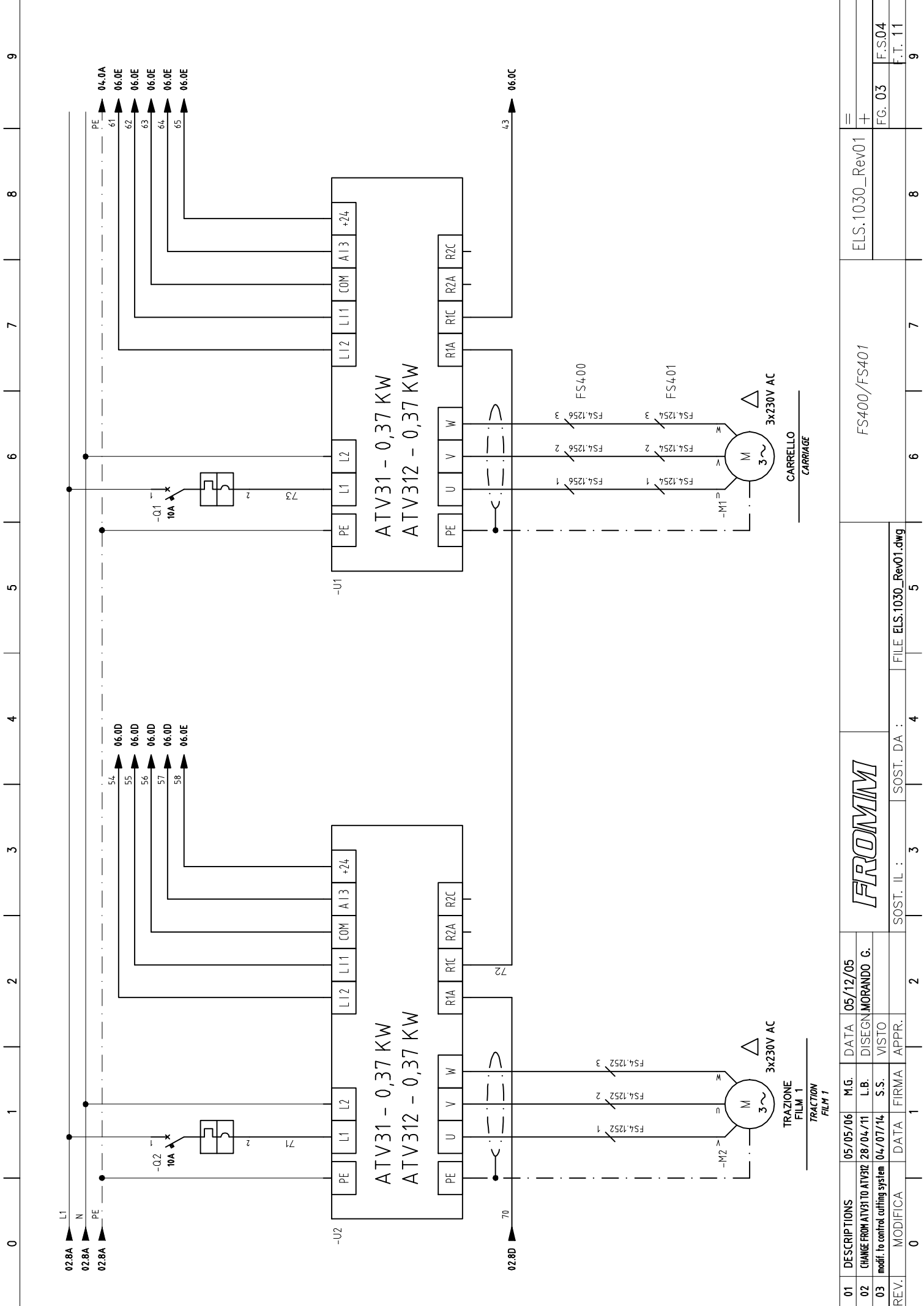
FRENTO FILM 2
BRAKE FILM 2

FRENTO FILM 2
BRAKE FILM 2

FRENTO FILM 2
BRAKE FILM 2

FRENTO FILM 2
BRAKE FILM 2

FRENTO FILM 2
BRAKE FILM 2



02.8A L1
 02.8A N
 02.8A PE

04.0A PE
 06.0E 61
 06.0E 62
 06.0E 63
 06.0E 64
 06.0E 65

06.0D 54
 06.0D 55
 06.0D 56
 06.0D 57
 06.0D 58

-Q1 10A
 -Q2 10A

73
 72

70
 71

43
 44

ATV31 - 0,37 KW
 ATV312 - 0,37 KW

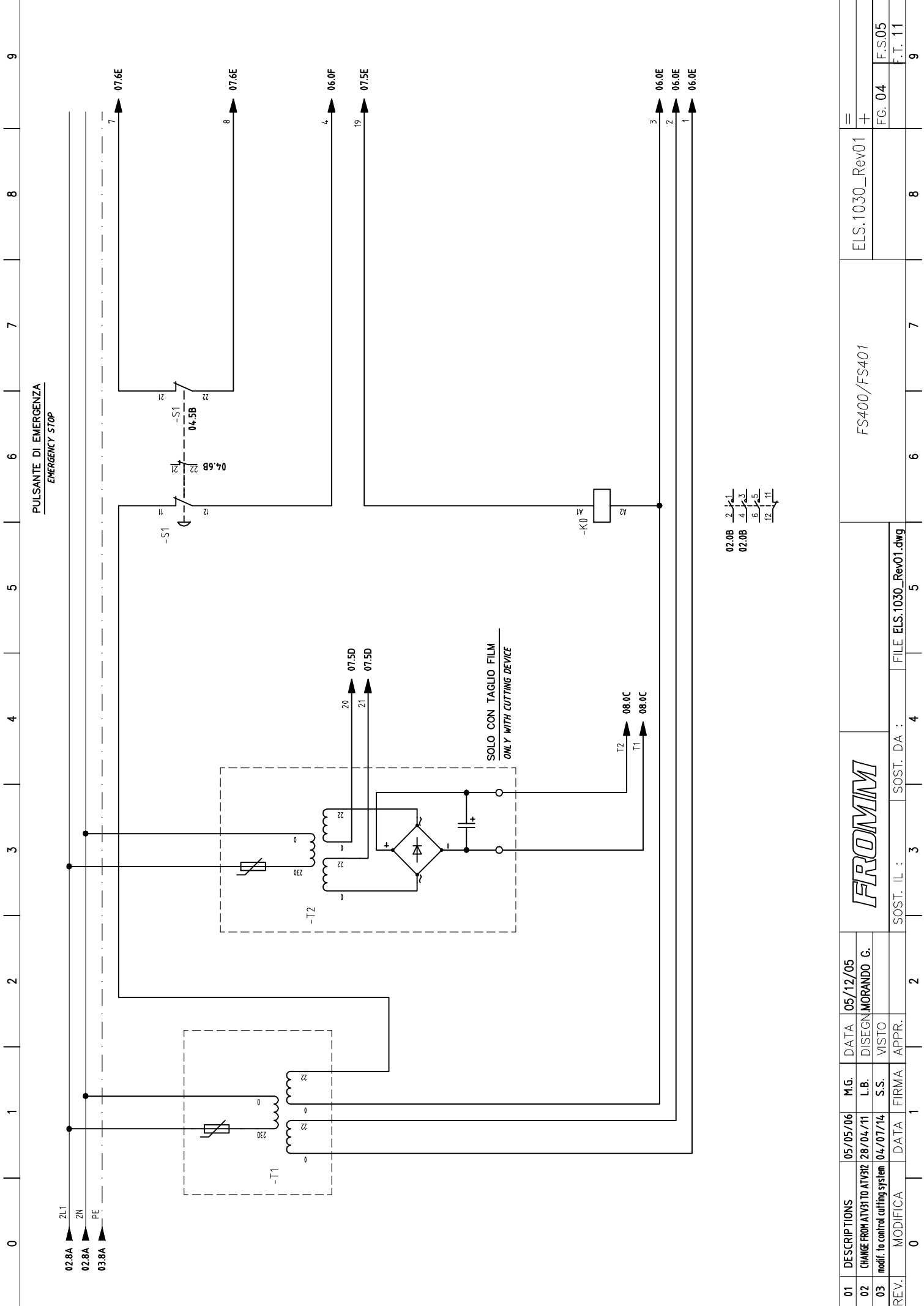
ATV31 - 0,37 KW
 ATV312 - 0,37 KW

TRAZIONE
 FILM 1

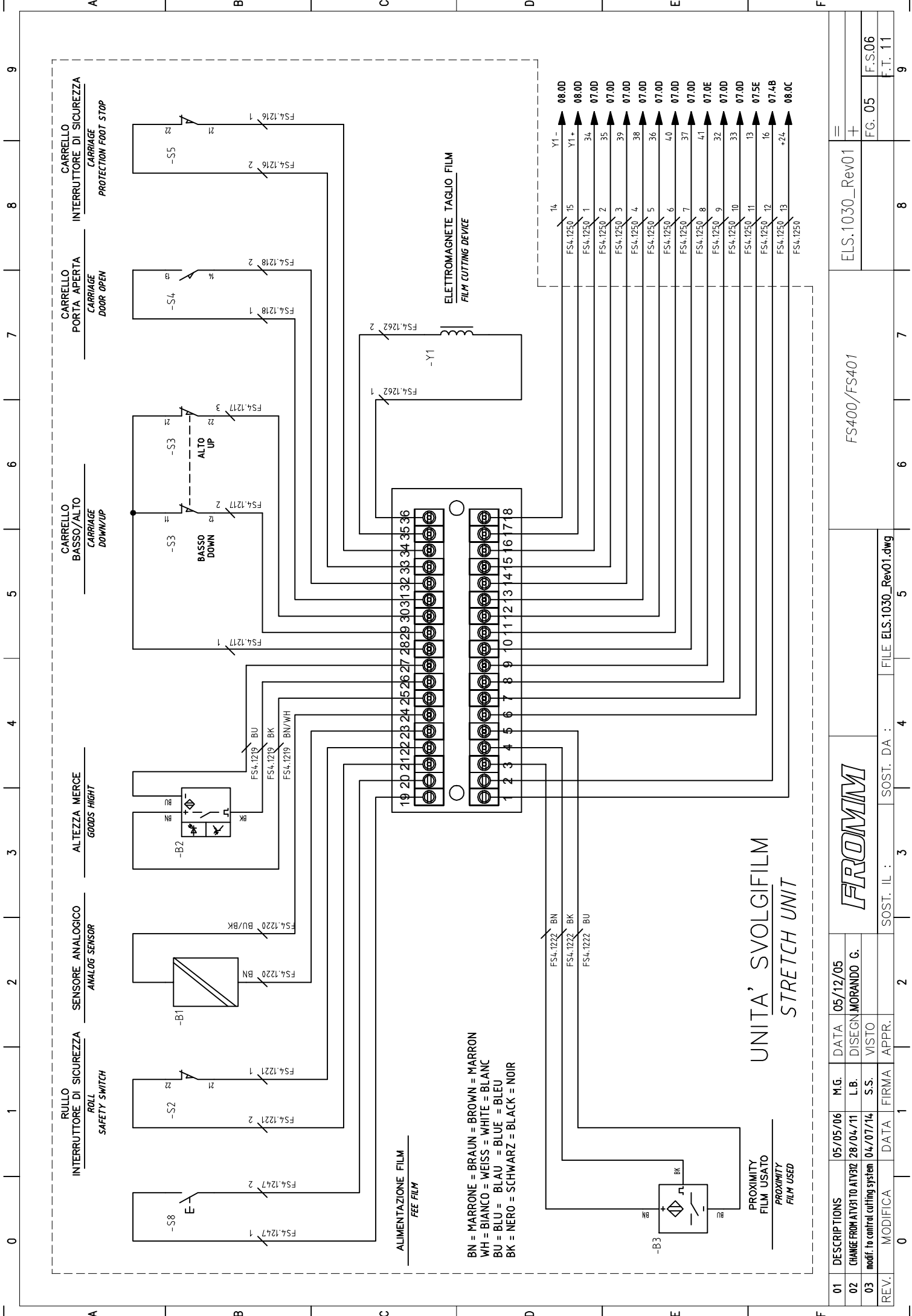
TRAZIONE
 FILM 1

CARRELLO
 CARRIAGE

REV.	MODIFICA	DATA	FIRMA	APPR.	SOST. IL :	SOST. DA :	FILE	FS400/FS401	ELS.1030_Rev01	FC: 03	F.S.04	F.T. 11
01	DESCRIPTIONS	05/05/06	M.G.	DATA	05/12/05							
02	CHANGE FROM ATV31 TO ATV312	28/04/11	L.B.	DISIGN	MORANDO G.							
03	modif. to control cutting system	04/07/14	S.S.	VISTO								
							FILE ELS.1030_Rev01.dwg					



01	DESCRIPTIONS	05/05/06	M.G.	05/12/05	DATA	
02	CHANGE FROM ATV31 TO ATV32	28/04/11	L.B.	DISEGN	MORANDO G.	
03	modif. to control cutting system	04/07/14	S.S.	VISTO		
REV.	MODIFICA	DATA	FIRMA	APPR.		
0						
1						
2						
3						
4						
5						
6						
7						
8						
9						
=						
+						
FC: 04						
F.T. 11						
ELS.1030_Rev01						
FS400/FS401						
ELS.1030_Rev01						
FC: 04						
F.T. 11						



ALIMENTAZIONE FILM
FEE FILM

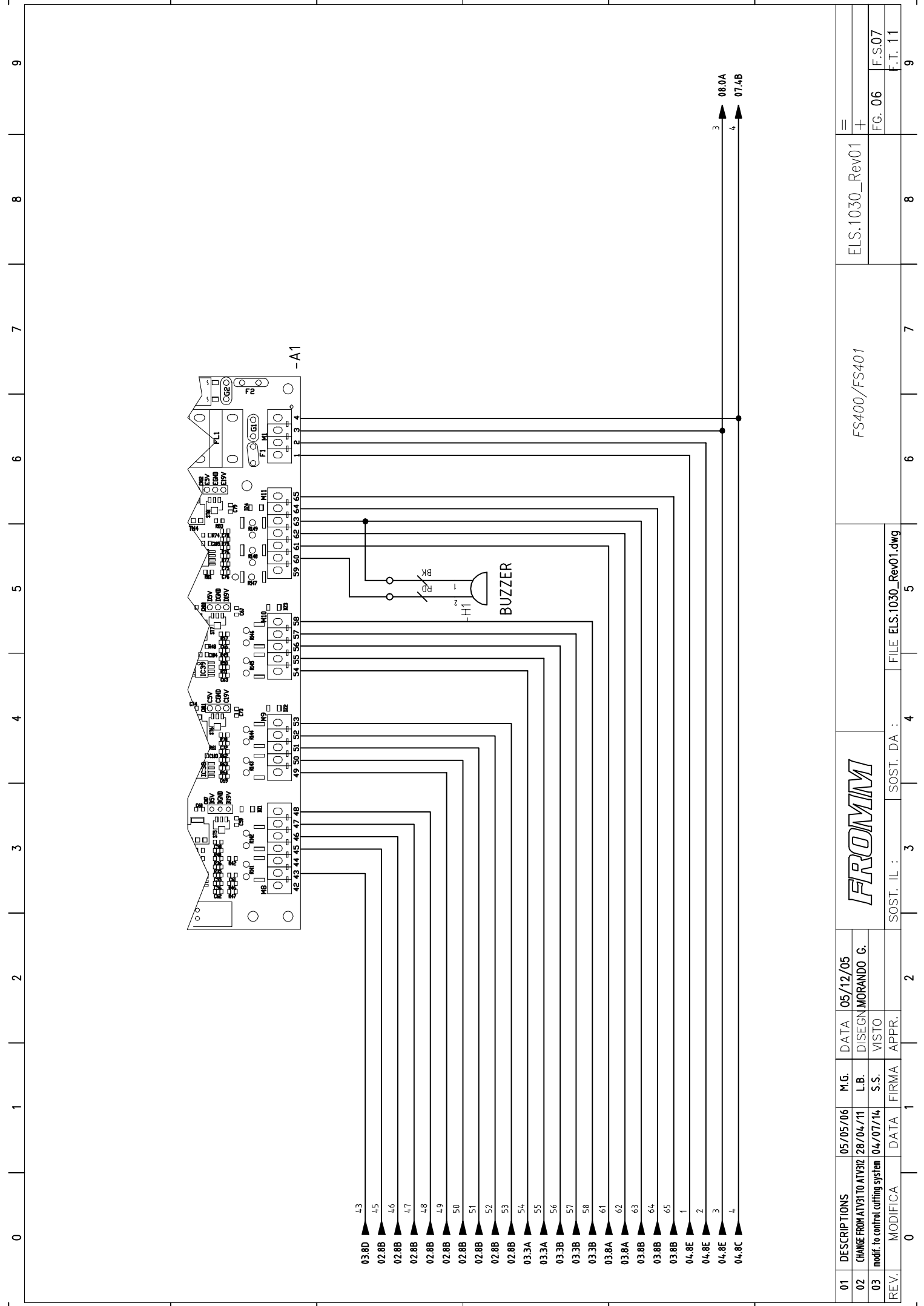
BN = MARRONE = BRAUN = BROWN = MARRON
 WH = BIANCO = WEISS = WHITE = BLANC
 BU = BLU = BLAU = BLUE = BLEU
 BK = NERO = SCHWARZ = BLACK = NDIR

ELETTROMAGNETE TAGLIO FILM
FILM CUTTING DEVICE

UNITA' SVOLGIFILM
STRETCH UNIT

PROXIMITY FILM USATO
PROXIMITY FILM USED

01	DESCRIPTIONS	05/05/06	M.G.	DATA	05/12/05	ELS.1030_Rev01	
02	CHANGE FROM ATV31 TO ATV32	28/04/11	L.B.	DESIGN	MORANDO G.	FC: 05 F.S.06	
03	modif. to control cutting system	04/07/14	S.S.	VISTO		F.T. 11	
REV.	MODIFICA	DATA	FIRMA	APPR.	SOST. IL :	SOST. DA :	FILE ELS.1030_Rev01.dwg
0					2	3	4
					5	6	7
					8	9	

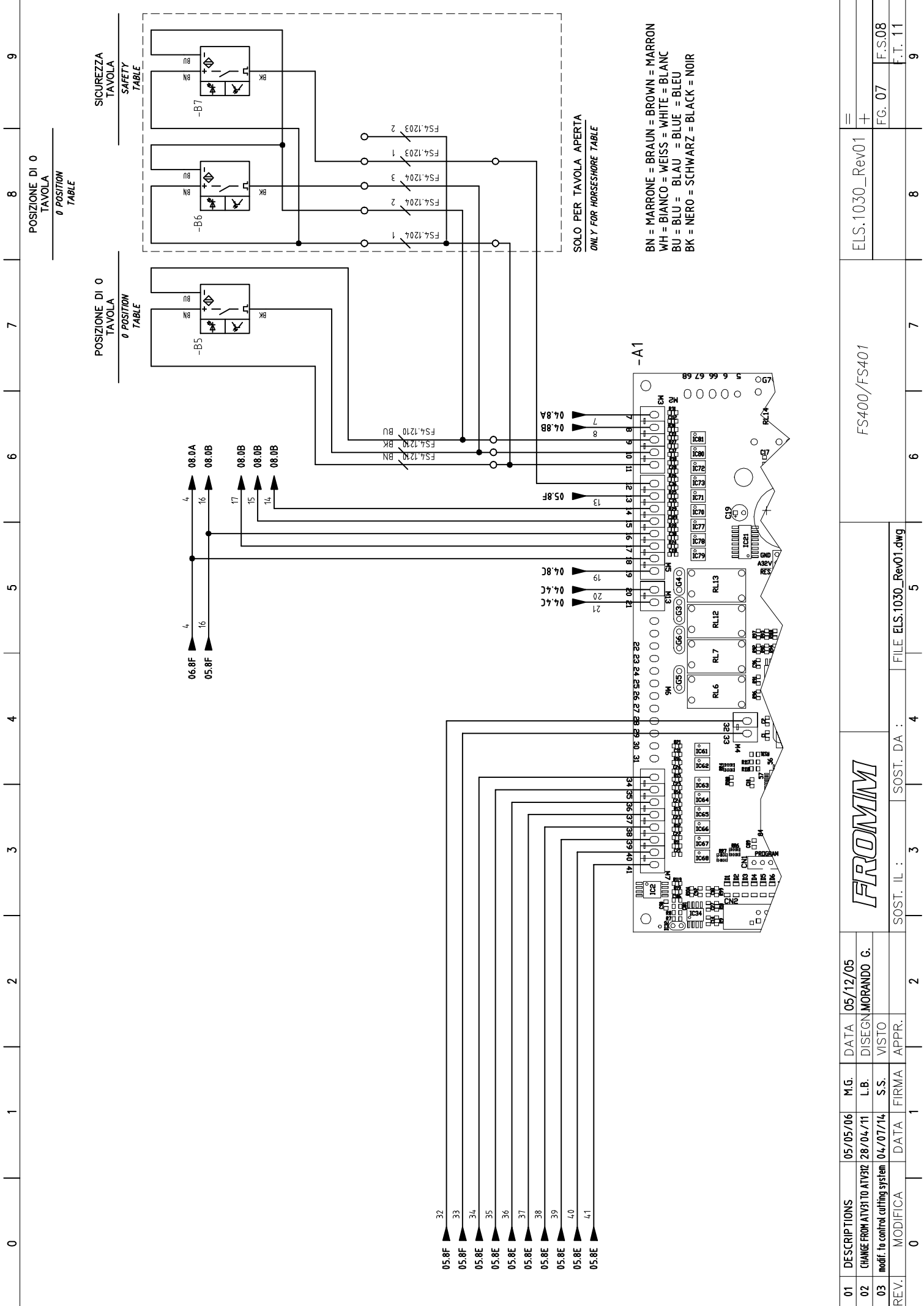


REV.	DESCRIPTIONS	05/05/06	05/12/05	M.G.	DATA	05/12/05	FROMMINI			FS400/FS401			ELS.1030_Rev01					
01	CHANGE FROM ATV31 TO ATV32	28/04/11	L.B.	DISEGN	MORANDO	G.												
02	modif. to control cutting system	04/07/14	S.S.	VISTO														
03	MODIFICA	DATA	FIRMA	APPR.														
0							SOST. IL :	3	SOST. DA :	4	FILE	ELS.1030_Rev01.dwg	5		6	7	8	9

03.8D 43
02.8B 45
02.8B 46
02.8B 47
02.8B 48
02.8B 49
02.8B 50
02.8B 51
02.8B 52
02.8B 53
03.3A 54
03.3A 55
03.3B 56
03.3B 57
03.3B 58
03.8A 61
03.8A 62
03.8B 63
03.8B 64
03.8B 65
04.8E 1
04.8E 2
04.8E 3
04.8C 4

42 43 44 45 46 47 48
49 50 51 52 53
54 55 56 57 58
59 60 61 62 63 64 65

08.0A
07.4B



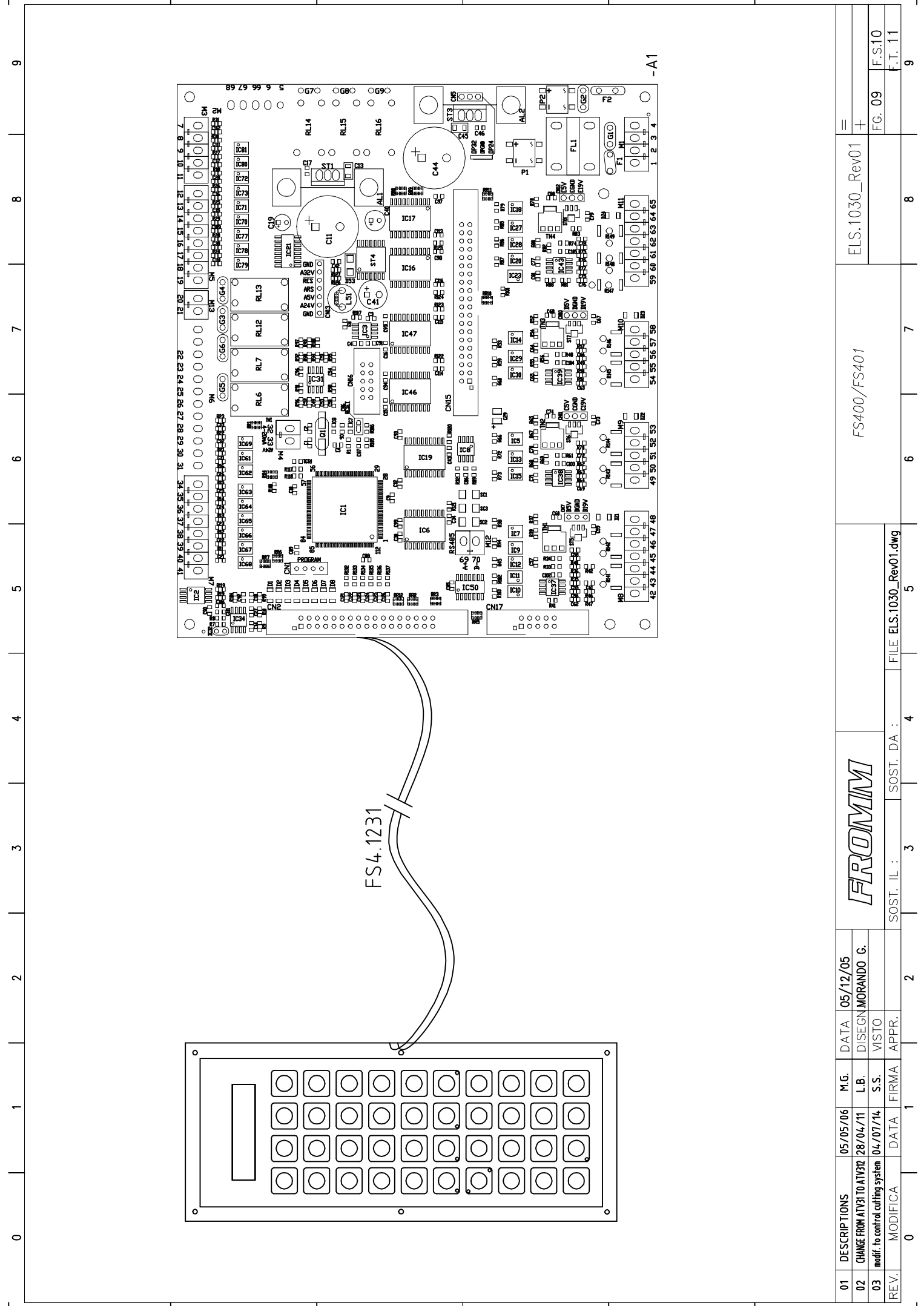
REV.	MODIFICA	DATA	FIRMA	APPR.	SOST. IL :	SOST. DA :	FILE
01	DESCRIPTIONS	05/05/06	M.G.	DATA	05/12/05		
02	CHANGE FROM ATV31 TO ATV32	28/04/11	L.B.	DISEGN	MORANDO G.		
03	modif. to control cutting system	04/07/14	S.S.	VISTO			
0							

FROMM

FS400/FS401

ELS.1030_Rev01

FC: 07	F.S.08	8	7	6	5	4	3	2	1	0
F.T. 11	F.T. 11	8	7	6	5	4	3	2	1	0



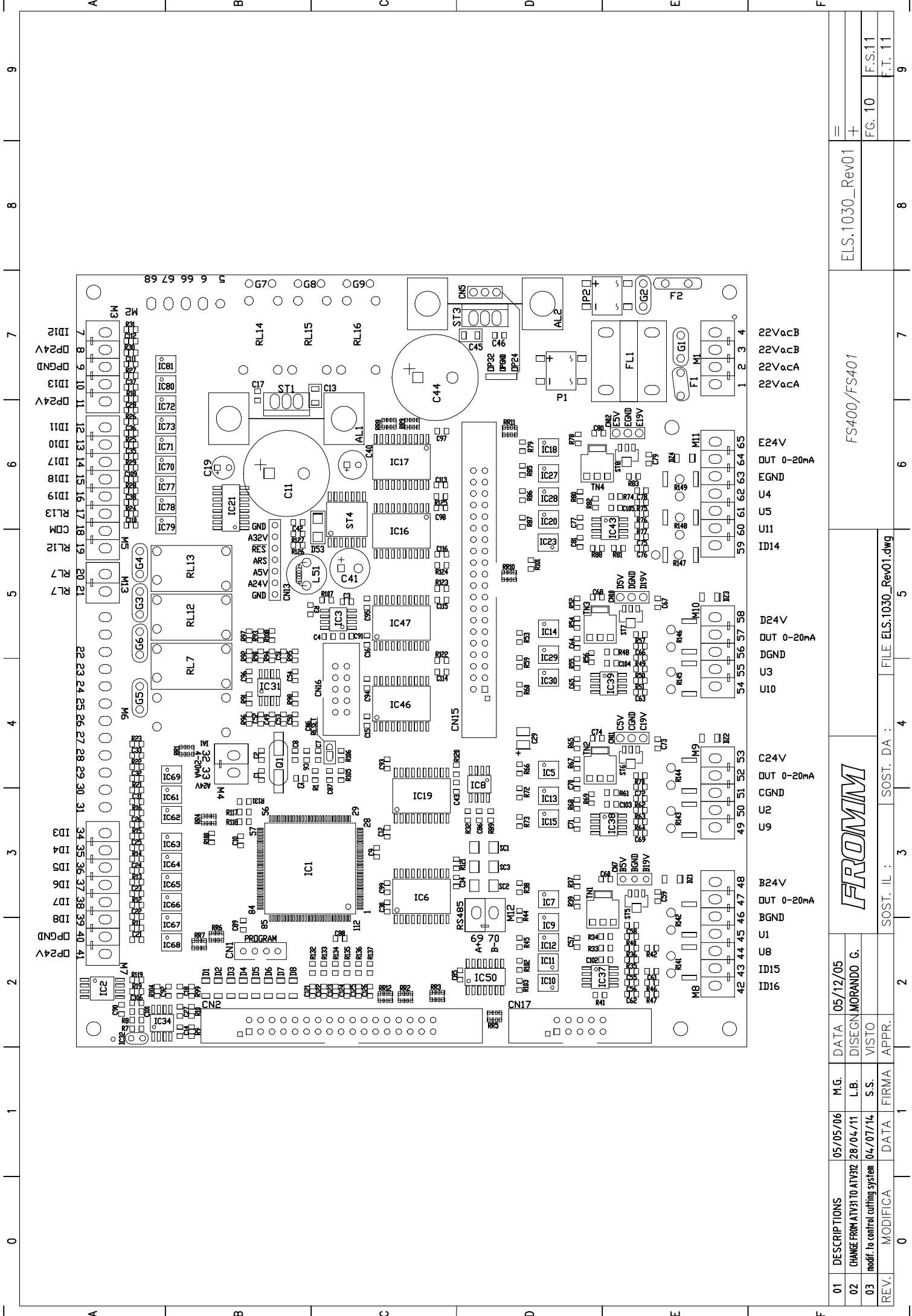
FS4.1231

-A1

REV.	DESCRIPTIONS	05/05/06	M.G.	DATA	05/12/05
01	CHANGE FROM AT131 TO AT1312	28/04/11	L.B.	DISEGN	MORANDO G.
02	modif. to control cutting system	04/07/14	S.S.	VISTO	
03	MODIFICA	DATA	FIRMA	APPR.	

FROMMINI	
FS400/FS401	
FILE ELS.1030_Rev01.dwg	4
SOST. IL :	3
SOST. DA :	4

ELS.1030_Rev01	
FC: 09	F.S.10
	F.T. 11
	9



FS400/FS401

ELS.1030_Rev01

01	DESCRIPTIONS	05/05/06	M.G.	DATA	05/12/05
02	CHANGE FROM ATV31 TO ATV32	28/04/11	L.B.	DESIGN	MORANDO G.
03	modif. to control cutting system	04/07/14	S.S.	VISTO	
REV.	MODIFICA	DATA	FIRMA	APPR.	



0	SOST. IL :	3	FILE ELS.1030_Rev01.dwg
1	SOST. DA :	4	

2	U1	B24V	OUT 0-20mA
3	U8	BGND	
4	U15	BGND	
5	ID16		
6	U9	C24V	OUT 0-20mA
7	U2	CGND	
8	U3	D24V	OUT 0-20mA
9	U10	DGND	
10	U11	U4	
11	U5	EGND	
12	ID14		
13	U14		
14	U11		
15	U4		
16	EGND		
17	OUT 0-20mA		
18	E24V		
19	22VacA		
20	22VacB		
21	22VacB		
22	22VacA		

FC: 10	F.S.11
F.T. 11	

