

# **FROMM**

**Numbers & Drawings Art. code : FS1.2118**

**Stretch Wrapping machine's  
FS1xx**

**Version 01/02 Machines  
Version 07 List**

**Website : [www.fromm-stretch.com](http://www.fromm-stretch.com)**

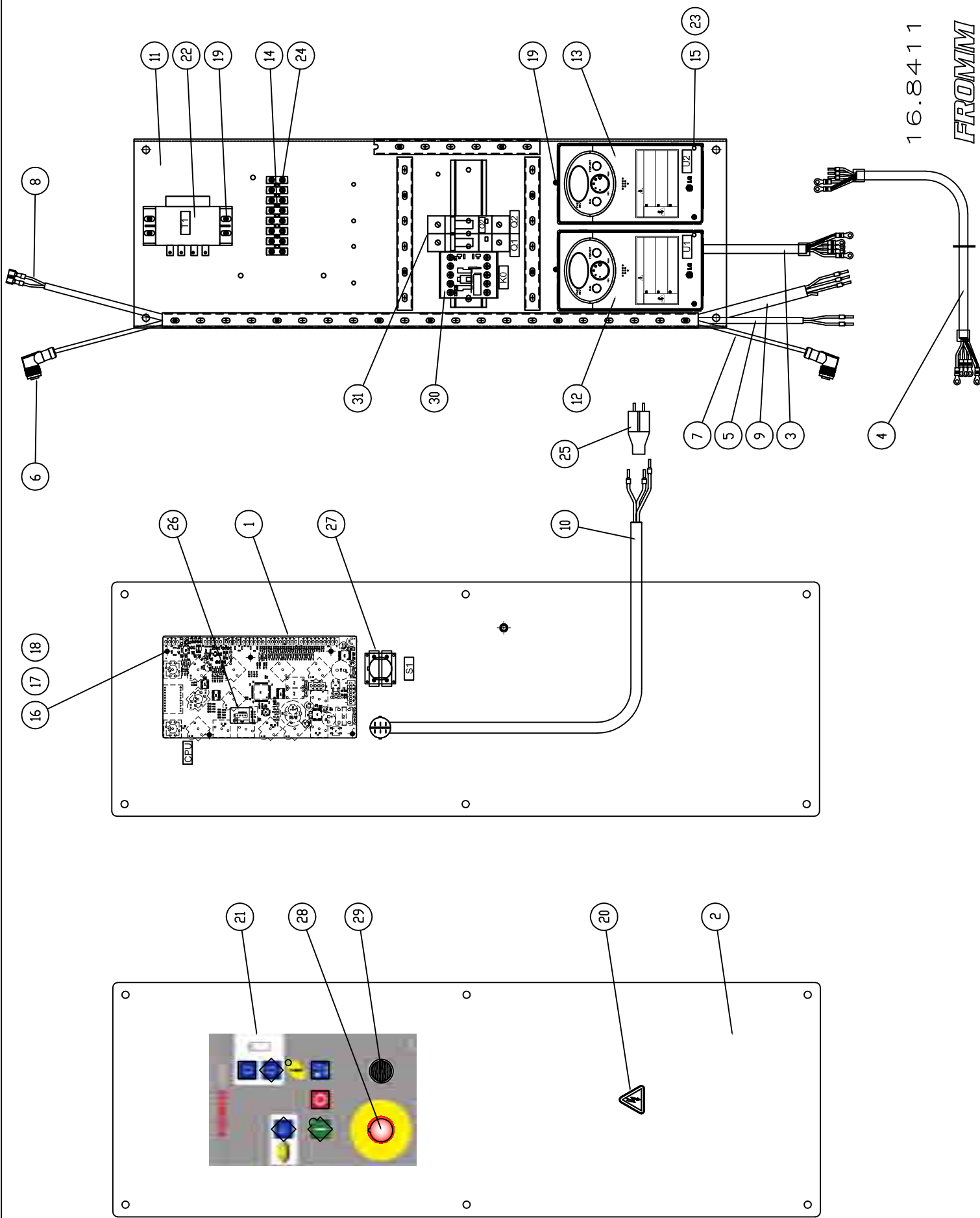
SPARE-PARTS\_FS1xx.V01/V02.EN07/a.servisi/ © 01/13

## **Maintenance Advice:**

- A = Clean**
- B = Tighter**
- C = Check wearing**
- D = Grease**
- E = Control**



FS "CENTO" END-USER PRICES				M	Q	Ø	H	C	V
Machine code 32.4				32.4	0	0	0	0	0
<b>Code Pos 1-2-3. SERIES OF MACHINES / SERIE DELLE MACCHINE</b>									
FS1xx Turntable budget stretchwrappers series 2010				32.4	<input checked="" type="checkbox"/>				
<b>Code Pos 4. ELECTRICAL BOX / QUADRO ELETTRICO</b>									
16.8411	OP1 / Quadro 1 FS110		1	<input type="checkbox"/>					
16.8412	OP2 / Quadro 2 FS130		2	<input type="checkbox"/>					
				<input type="checkbox"/>					
<b>Code Pos 5 - 6. TURNTABLE / TAVOLA ROTANTE</b>									
16.8421	1.500mm, 1.200kg load		01	<input type="checkbox"/>					
16.8422	1.650mm, 1.350kg load		02	<input type="checkbox"/>					
16.8423	1.650mm, 2.000kg load		03	<input type="checkbox"/>					
<b>Code Pos 7. MAST / ALBERO</b>									
16.8431	Mast 2.100mm / 2.000mm + 100mm		1	<input type="checkbox"/>					
				<input type="checkbox"/>					
				<input type="checkbox"/>					
<b>Code Pos 8. CARRIAGE / CARELLO</b>									
16.8440	Carello 0 - Mechanical film-core tension	OP1/OP2	0	<input type="checkbox"/>					
16.8441	Carello 1 - Mechanical film-core tension	OP1/OP2	1	<input type="checkbox"/>					
16.8442	Carello 2 - Mechanical break-roll tension	OP1/OP2	2	<input type="checkbox"/>					
16.8443	Carello 3 - Mechanical break-rollers pre-stretch	OP1/OP2	3	<input type="checkbox"/>					
16.8444	Carello 4 - Magnetical tension	OP1/OP2	4	<input type="checkbox"/>					
<b>Code Pos 9. VARIOUS / VARIE</b>									
16.8451	Standard motor group		0	<input type="checkbox"/>					
				<input type="checkbox"/>					

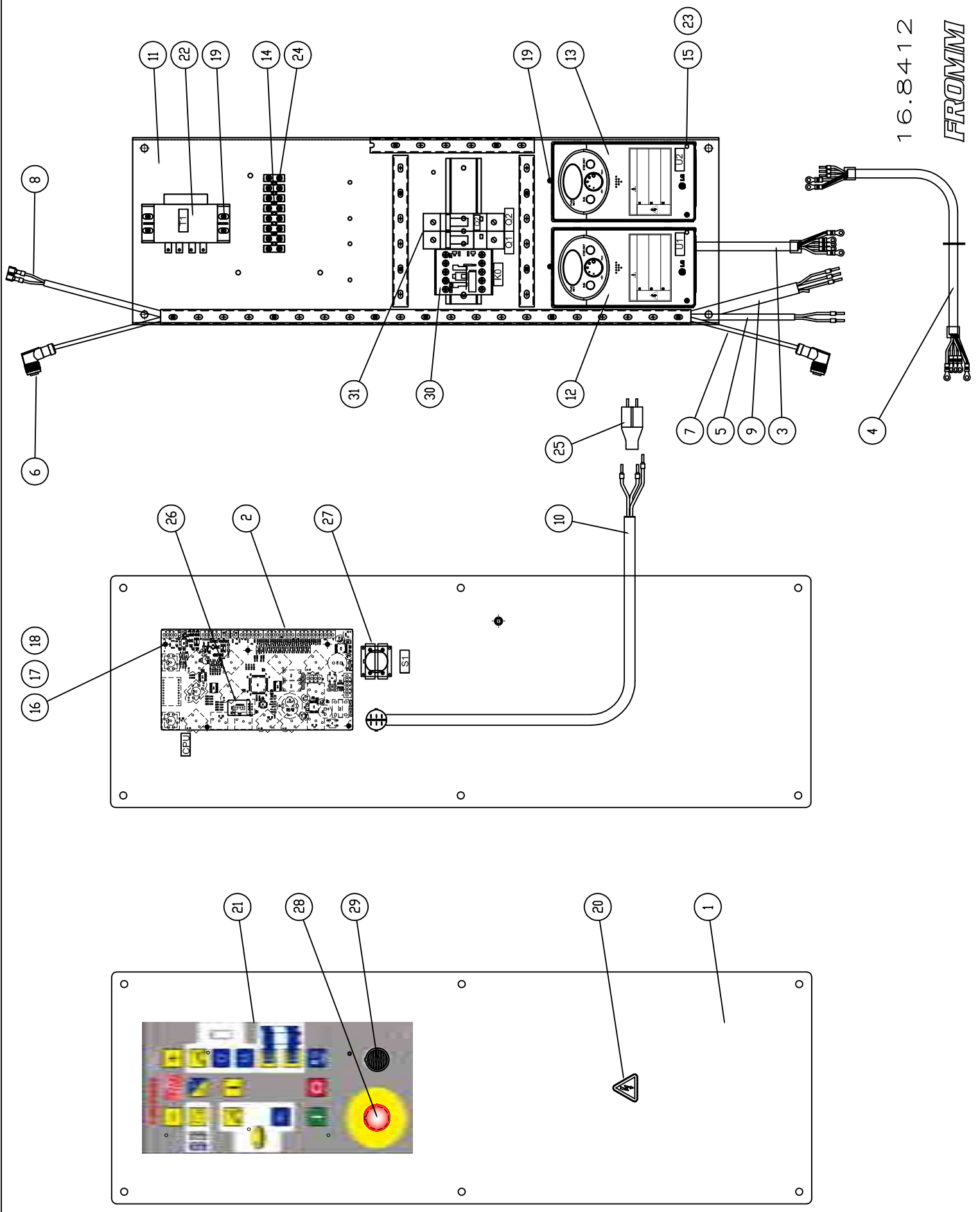


16.8411

FROMM

**16.8411 Operating Panel OP1 FS1.0210**

Part no.	RIF	Description	Specification English	Quantity	Maintenance
FS1.2079	1	Panel	PROTECTION PANEL FOR PC-BOARD	1	
FS1.2092	2	Panel	MAST CLOSING OP1	1	<b>A</b>
FS1.2100	3	Cable	CABLE FOR MOTOR TURNTABLE	1	
FS1.2101	4	Cable	CABLE FOR MOTOR CARRIAGE	1	
FS1.2102	5	Cable	CABLE FOR BOTTOM MICROSWITCH	1	
FS1.2103	6	Cable	CABLE FOR TOP PROXIMITY	1	
FS1.2104	7	Cable	TURNTABLE PROXIMITY CABLE	1	
FS1.2105	8	Cable	CABLE FOR MICRO	1	
FS1.2106	9	Cable	4-WIRE CABLE CARRIAGE FS1xx	1	
FS1.2107	10	Cable	POWER SUPPLY CABLE	1	
FS3.2026	11	Plate	OPERATING PANNEL PLATE	1	
FS3.2185	12	Inverter	INVERTER TABLE (OP1)	1	<b>E</b>
FS3.2187	13	Inverter	INVERTER CARRIAGE (OP1)	1	<b>E</b>
N1.1714	14	Screw	CYLINDRICAL HEAD CAP SCREW 2.9x16 ZN DIN 7981	2	
N1.1918	15	Screw	PHILIPS HEAD SCREW M4x12 ZINCED DIN 7985	2	
N1.1932	16	Screw	PHILIPS HEAD SCREW M3x8 ZINCED DIN 7985	5	
N1.5313	17	Nut	NUT M3 DIN 985 ZINCED	5	
N1.5942	18	Distance	HEXAGONAL DISTANCE PIECE	5	
N1.7333	19	Screw	HEAD PIN SCREW M4x10 ZINCED UNI 8112	8	
N4.9192	20	Label	TENSION LABEL 51mm	1	<b>E</b>
N43.9161	21	Label	LABEL PANEL BUDGET (OP1)	1	<b>A-C</b>
N5.1463	22	Transformator	TRANSFORMATOR	1	
N5.3811	23	Distance	DISTANCE PIECE M4	2	
N5.6701	24	Clamp	CLAMP 12 POLES 1.5MM	0.6	
N51.2120	25	Plug	PLUG 10/16A	1	
N51.7140	26	Panel	FS11x-FS31x OPERATIVE PANEL BUDGET	1	
N52.2251	27	Contact	AUXILIARY CONTACT	2	
N52.2252	28	Emergency-stop	EMERGENCY-STOP MUSHROOM	1	<b>E</b>
N52.2270	29	Switch on/off	SWITCH ON/OFF	1	
N52.5217	30	Contactore	POWER CONTACTOR	1	
N52.5218	31	Switch	THERMAL OVERCURRENT CIRCUIT BREAKERS	2	<b>E</b>



16.8412

FROMM

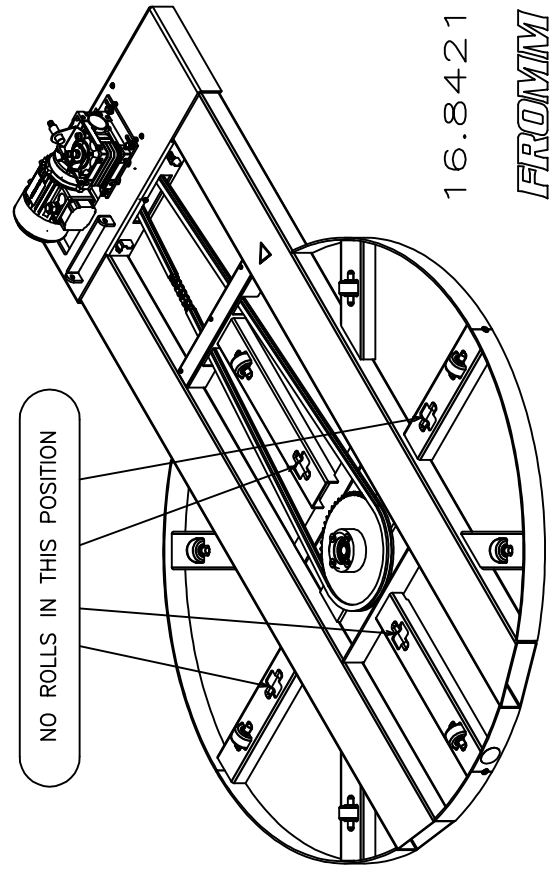
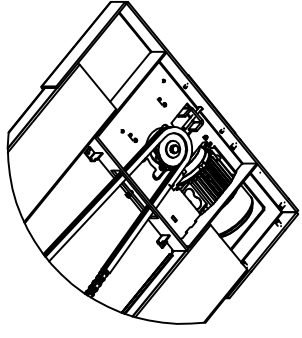
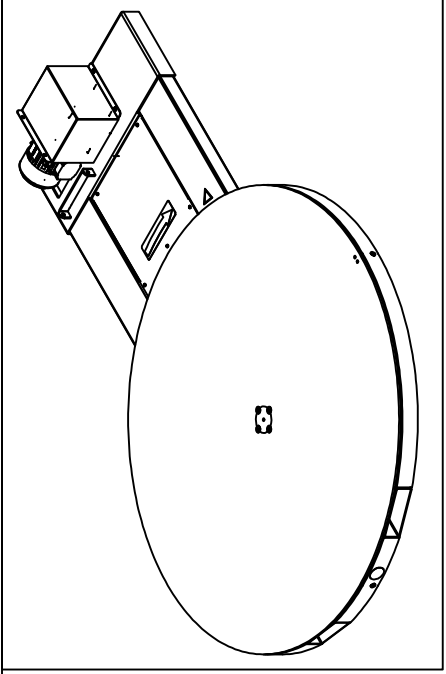
16.8412 Operating Panel OP2 FS1.0211

Part no.	RIF	Descrip.	Specification English	Q.ty	Maintenan.
FS1.2074	1	Panel	MAST CLOSING OP2	1	A
FS1.2079	2	Panel	PROTECTION PANEL FOR PC-BOARD	1	
FS1.2100	3	Cable	CABLE FOR MOTOR TURNTABLE	1	
FS1.2101	4	Cable	CABLE FOR MOTOR CARRIAGE	1	
FS1.2102	5	Cable	CABLE FOR BOTTOM MICROSWITCH	1	
FS1.2103	6	Cable	CABLE FOR TOP PROXIMITY	1	
FS1.2104	7	Cable	TURNTABLE PROXIMITY CABLE	1	
FS1.2105	8	Cable	CABLE FOR MICRO	1	
FS1.2106	9	Cable	4-WIRE CABLE CARRIAGE FS1xx	1	
FS1.2107	10	Cable	POWER SUPPLY CABLE	1	
FS3.2026	11	Plate	OPERATING PANNEL PLATE	1	
FS3.2186	12	Inverter	INVERTER TABLE (OP2) (from s/number 02.00012 inverter FS3.2450)	1	E
FS3.2188	13	Inverter	INVERTER CARRIAGE (OP2) (from s/number 02.00012 inverter FS3.2452)	1	E
N1.1714	14	Screw	CYLINDRICAL HEAD CAP SCREW 2.9x16 ZN DIN 7981	2	
N1.1918	15	Screw	PHILIPS HEAD SCREW M4x12 ZINCED DIN 7985	2	
N1.1932	16	Screw	PHILIPS HEAD SCREW M3x8 ZINCED DIN 7985	5	
N1.5313	17	Nut	NUT M3 DIN 985 ZINCED	5	
N1.5942	18	Distance	HEXAGONAL DISTANCE PIECE	5	
N1.7333	19	Screw	HEAD PIN SCREW M4x10 ZINCED UNI 8112	8	
N4.9192	20	Label	TENSION LABEL 51mm	1	E
N43.9160	21	Label	LABEL PANEL BUDGET PLUS (OP2)	1	A-C
N5.1463	22	Transfor.	TRANSFORMATOR	1	
N5.3811	23	Distance	DISTANCE PIECE M4	2	
N5.6701	24	Clamp	CLAMP 12 POLES 1.5MM	0.6	
N51.2120	25	Plug	PLUG 10/16A	1	
N51.7141	26	Panel	FS13x-FS33x OPERATIVE PANEL BUDGET	1	A
N52.2251	27	Contact	AUXILIARY CONTACT	2	
N52.2252	28	Emer.	EMERGENCY-STOP MUSHROOM	1	E
N52.2270	29	Switch	SWITCH ON/OFF	1	
N52.5217	30	Contacto	POWER CONTACTOR	1	
N52.5218	31	Switch	THERMAL OVERCURRENT CIRCUIT BREAKERS	2	E

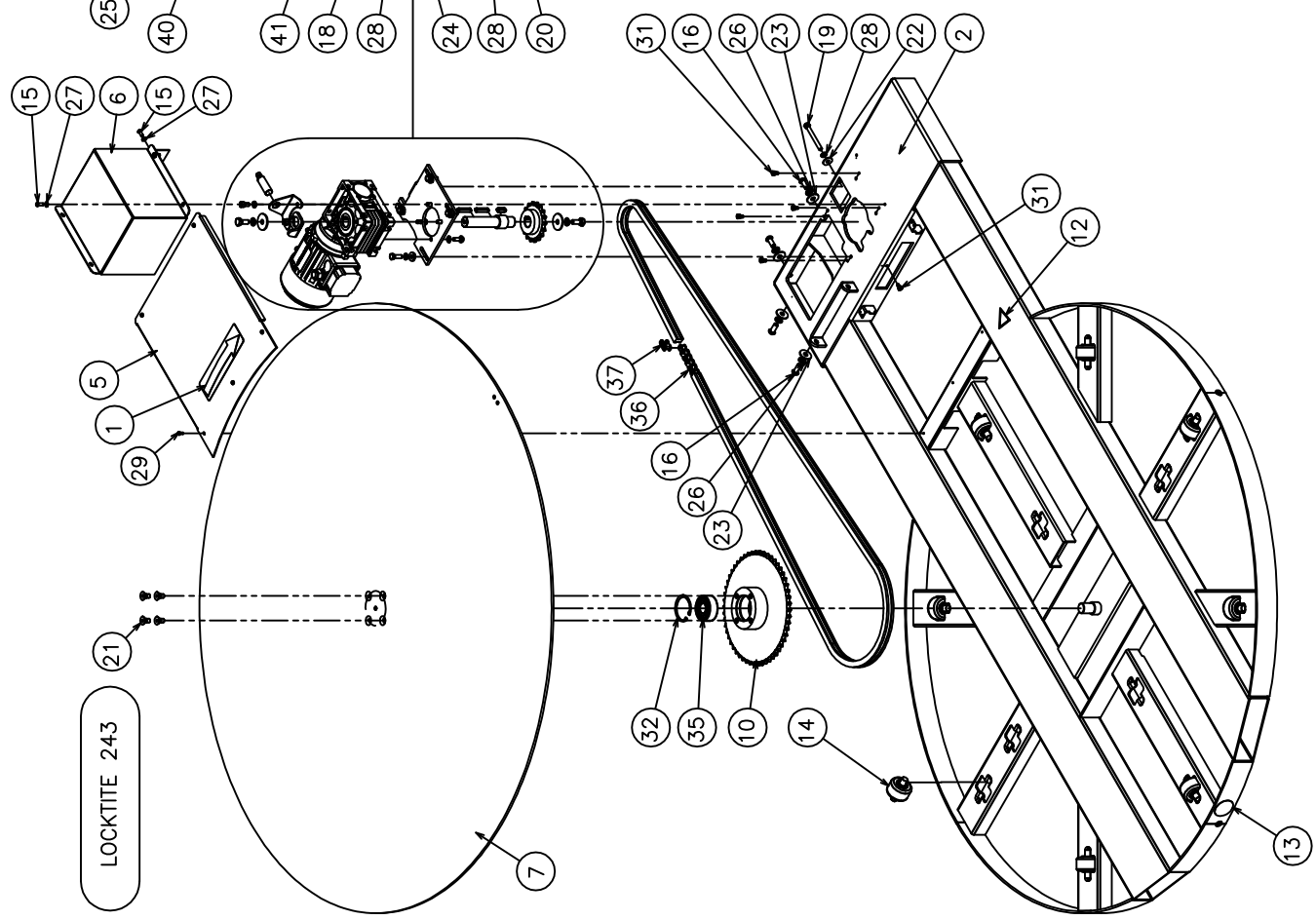
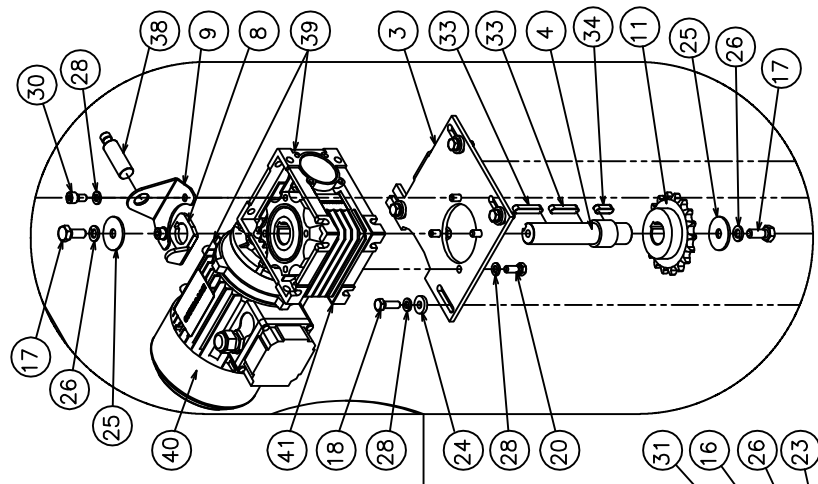
LOCKTITE 243

Alle Angaben  
sind ohne Gewähr

Alle Angaben  
sind ohne Gewähr



NO ROLLS IN THIS POSITION



16.8421

FROMM

www.fromm-stretch.com



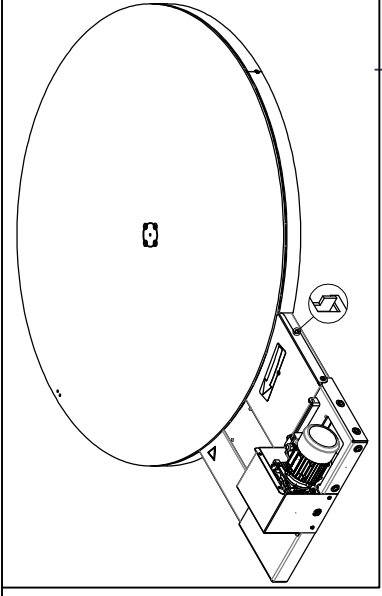
**16.8421 Base unit FS1.0201GB Ø1500mm**

Part no.	RIF	Description	Specification English	Quantity	Maintenance
FS1.1379	1	Label	LABEL WITH DRAWING OF ARROW	1	C-E
FS1.2000B	2	Base unit	PAINTED BASE UNIT DIAMETER 1500 BLUE RAL 5010	1	A
FS1.2009Z	3	Support	SUPPORT FOR GEARBOX	1	
FS1.2011	4	Shaft	SHAFT	1	E
FS1.2020B	5	Cover	PAINTED CLOSING BASE BLUE RAL 5010	1	E
FS1.2026B	6	Carter	PAINTED MOTOR CARTER BLUE RAL 5010	1	A-E
FS3.2083G	7	Disk	PAINTED DISK D.1500 YELLOW RAL 1021	1	A
FS3.2088	8	Bracket	BRACKET SHAFT BASE UNIT	1	
FS3.2089	9	Bracket	BRACKET SUPPORT SENSOR BASE UNIT	1	
FS3.2099	10	Gear	GEAR 5/8"x3/8" Z=54	1	
FS3.2103	11	Pinion	PINION 5/8"x3/8" Z=18	1	
FS3.2342	12	Label	FALL DANGER LABEL	1	E
FS3.2344	13	Label	FORKLIFT TRUCK LABEL	1	E
FS4.1017	14	Roller	ROLL (VALID UNTIL 31.12.2011)	8	A-C-D
FS4.0168	14	Roller	ROLL (VALID FROM 01.01.2012)	8	A-C-D
N1.1220	15	Screw	BUTTON HEAD SCREW ISO 7380 - M6 x 16	4	
N1.1228	16	Bolt	BUTTON HEAD BOLT M10x25 ZINCED UNI 7380	4	B
N1.1546	17	Bolt	HEXAGONAL HEAD CAP BOLT M10x25 ZN DIN 933	2	B
N1.1557	18	Bolt	HEXAGONAL HEAD CAP BOLT M8x25 ZN DIN 933	4	B
N1.1588	19	Bolt	HEXAGONAL HEAD CAP BOLT M8x80 ZN DIN 933	1	B
N1.1589	20	Bolt	HEXAGONAL HEAD CAP BOLT M8x18 ZN DIN 933	4	B
N1.2183	21	Bolt	SOCKET CTRS. HD BOLT DIN 7991-A- M10 x 20	4	B
N1.6109	22	Washer	WASHER D.24x 8,4x2 ZN DIN 9021/B	1	
N1.6130	23	Washer	WASHER D.10.5X30X2.5 ZN DIN 9021/B	4	
N1.6138	24	Washer	WASHER D.8.4X21X4 ZN DIN 7349	4	
N1.6196	25	Washer	PLAIN WASHER UNI 6593 M10 TYPE A 10.5x40x2.5	2	
N1.6201	26	Washer	SPRING LOCK WASHER DIN 127 -B- M10 ZN	6	
N1.6204	27	Washer	SPRING LOCK WASHER DIN 127 -B- M6 ZN	4	
N1.6215	28	Washer	SPRING LOCK WASHER DIN 127 -B- M8 ZN	11	
N1.7333	29	Screw	HEAD PIN SCREW DIN 7500-C M4x10 ZN	5	
N11.1102	30	Bolt	CYLINDRICAL HEAD BOLT CL.8.8 DIN 912 M8x16 ZN	2	
N11.1121	31	Bolt	CYLINDRICAL HEAD BOLT CL.8.8 DIN 912 M6x10 ZN	5	
N2.1223	32	Seeger	SEEGER D.62 TYPE "J" UNI 3654/7437	1	
N2.3308	33	Key	KEY 8x7x40 UNI 6604	2	
N2.3314	34	Key	KEY 8x7x25 UNI 6604	1	
N31.1143	35	Ball bearing	BALL BEARING 62305 2RS1 25x62x24	1	D
N4.7367	36	Chain	CHAIN 5/8"X3/8" 203 LINKS	1	B-D
N4.7415	37	Link	LINK 5/8"X3/8"	1	
N5.2554	38	Proximity	PROXIMITY M18 PNP NO CON. M12 (E=distance 2mm)	1	E
<b>GROUP MOTORGear FS11x (VALID UNTIL SERIAL NUMBER MACHINE 03.00004)</b>					
N51.1104	39	Motor/Gear	GEARBOX IEC 71 0.55KW/4 POLES 230/400V 50Hz	1	B-C
N51.1103	40	Motor	MOTOR IEC 71 0.55KW/4 POLES 230/400V 50Hz	1	B-C
N4.7645	41	Gear	GEAR NMRV_050_40,00_14*105_25_U_MV	1	B-C

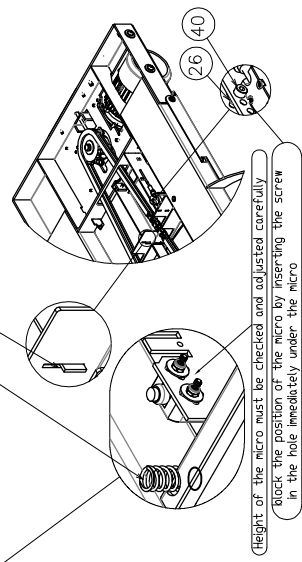
16.8421 Base unit FS1.0201GB Ø1500mm

Part no.	RIF	Description	Specification English	Quantity	Maintenance
<b>GROUP MOTORGear FS13x (VALID UNTIL SERIAL NUMBER MACHINE 02.00009)</b>					
N51.1104	39	Motor/Gear	GEARBOX IEC 71 0.55KW/4 POLES 230/400V 50Hz	1	B-C
N51.1103	40	Motor	MOTOR IEC 71 0.55KW/4 POLES 230/400V 50Hz	1	B-C
N4.7645	41	Gear	GEAR NMRV_050_40,00_14*105_25_U_MV	1	B-C

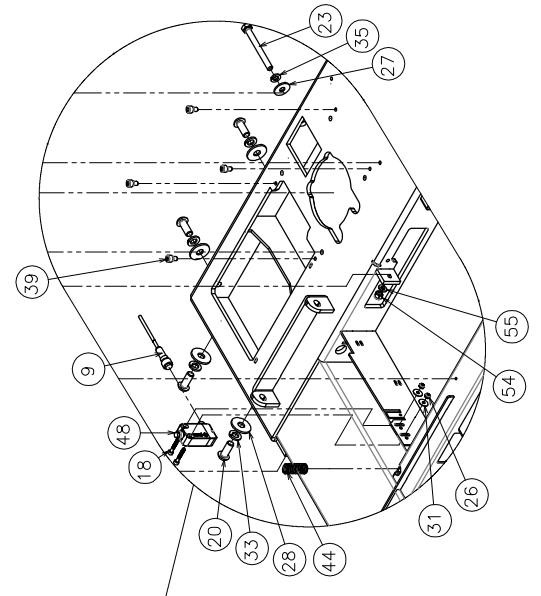
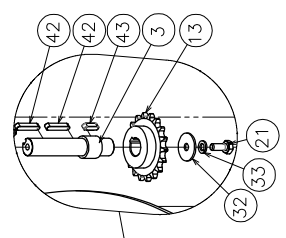
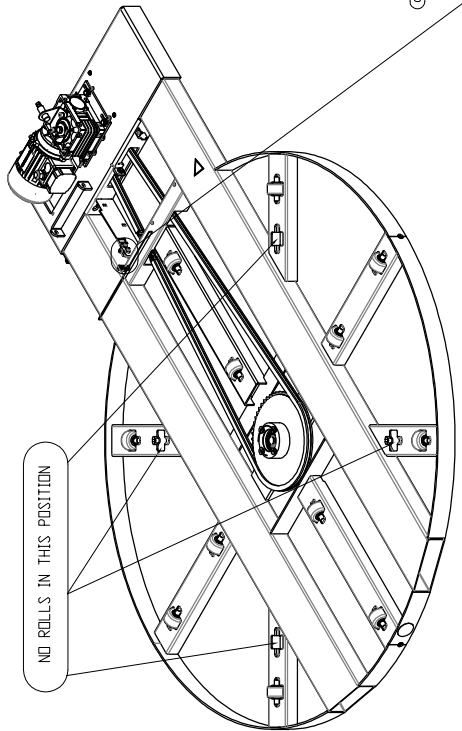




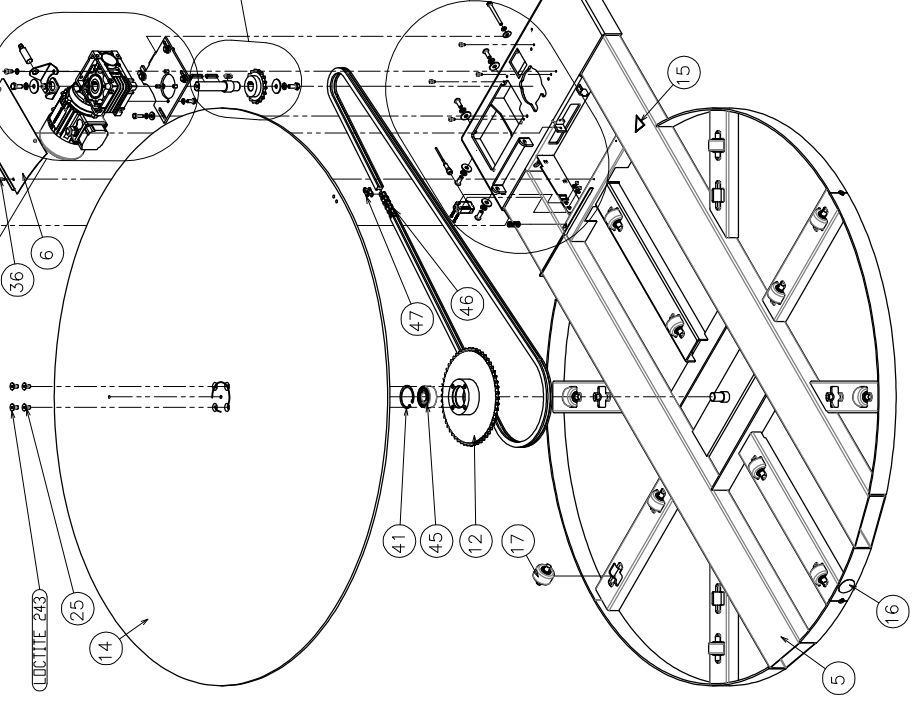
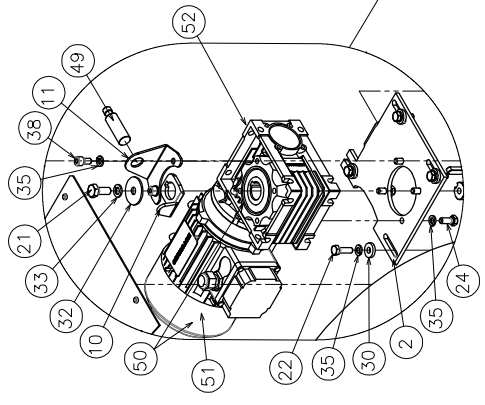
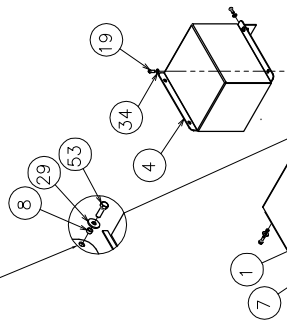
Check the correct position of the spring before and after mounted the safety cover.  
the safety cover must move freely in the slot.



Height of the micro must be checked and adjusted carefully.  
Right the position of the micro by inserting the screw in the hole immediately under the micro.



the spacer must be completely in the hole before locking the screw



16.8422

FROMM

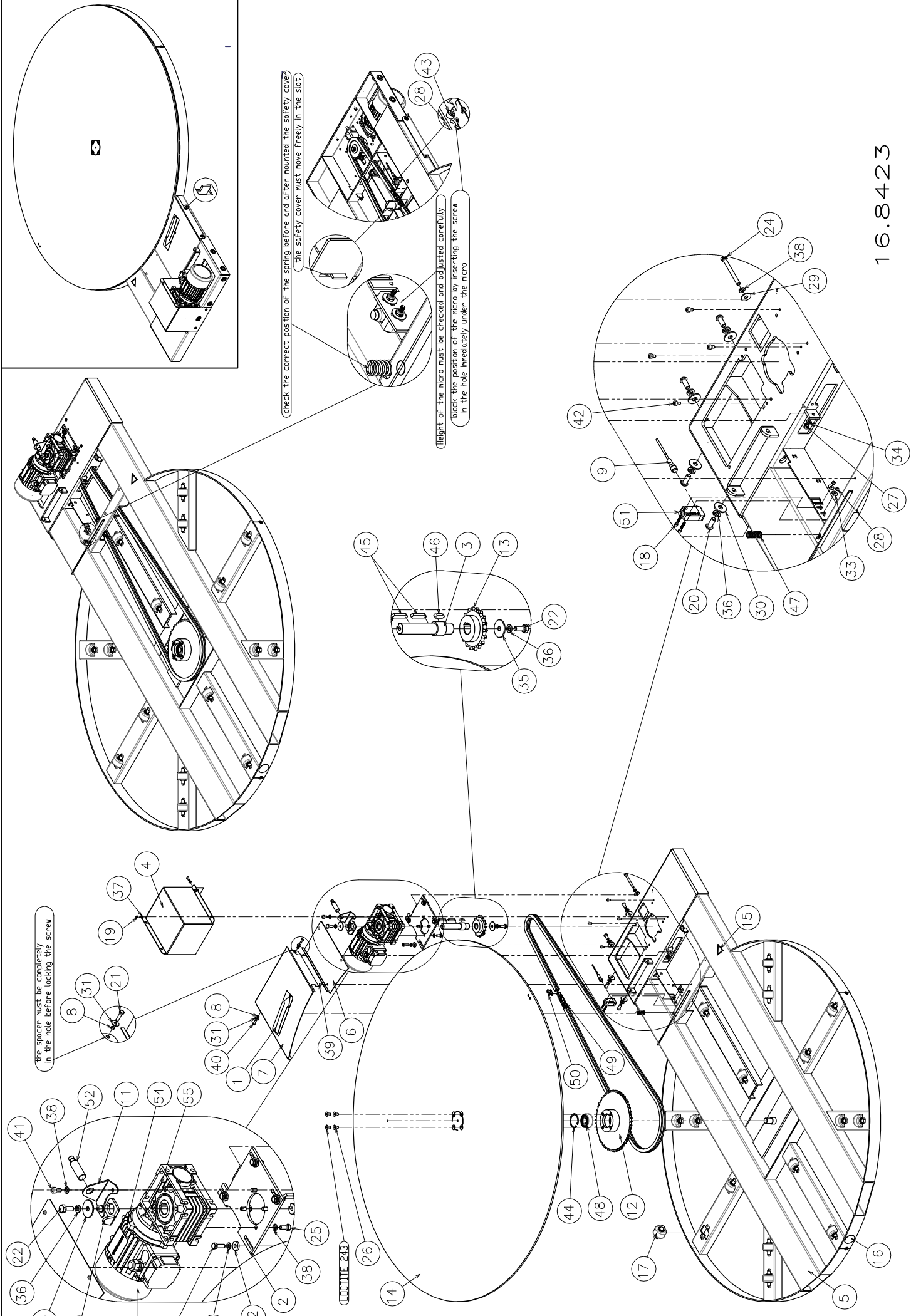
16.8422 Base unit FS1.0207GB Ø1650mm

Part no.	RIF	Description	Specification English	Quantity	Maintenance
FS1.1379	1	Label	LABEL WITH DRAWING OF ARROW	1	C-E
FS1.2009Z	2	Support	SUPPORT FOR GEARBOX	1	
FS1.2011	3	Shaft	SHAFT	1	E
FS1.2026B	4	Carter	PAINTED MOTOR CARTER BLUE RAL 5010	1	A-E
FS1.2080B	5	Group	PAINTED BASE UNIT D.1650MM BLUE RAL 5010	1	A
FS1.2089B	6	Carter	CARTER FOR THE CHAIN	1	
FS1.2094G	7	Carter	CARTER	1	A
FS1.2096	8	Distance piece	DISTANCE PIECE	2	
FS1.2119	9	Cable	MICROSWITCH CABLE	1	
FS3.2088	10	Bracket	BRACKET SHAFT BASE UNIT	1	
FS3.2089	11	Bracket	BRACKET SUPPORT SENSOR BASE UNIT	1	
FS3.2099	12	Gear	GEAR 5/8"x3/8" Z=54	1	
FS3.2103	13	Pinion	PINION 5/8"x3/8" Z=18	1	
FS3.2144G	14	Disk	PAINTED DISK D.1650 YELLOW RAL 1021	1	A
FS3.2342	15	Label	FALL DANGER LABEL	1	E
FS3.2344	16	Label	FORKLIFT TRUCK LABEL	1	E
FS4.1017	17	Roller	ROLL (VALID UNTIL 31.12.2011)	12	A-C-D
FS4.0168	17	Roller	ROLL (VALID FROM 01.01.2012)	12	A-C-D
N1.1191	18	Screw	CYLINDRICAL HEAD CAP SCREW DIN 912 M4x25 BL.	2	
N1.1220	19	Screw	BUTTON HEAD SCREW ISO 7380 - M6 x 16	4	
N1.1228	20	Bolt	BUTTON HEAD BOLT M10x25 ZINCED UNI 7380	4	B
N1.1546	21	Bolt	HEXAGONAL HEAD CAP BOLT M10x25 ZN DIN 933	2	B
N1.1557	22	Bolt	HEXAGONAL HEAD CAP BOLT M8x25 ZN DIN 933	4	B
N1.1588	23	Bolt	HEXAGONAL HEAD CAP BOLT M8x80 ZN DIN 933	1	B
N1.1589	24	Bolt	HEXAGONAL HEAD CAP BOLT M8x18 ZN DIN 933	4	B
N1.2183	25	Bolt	SOCKET CTRS. HD BOLT DIN 7991-A- M10 x 20	4	B
N1.5307	26	Nut	PREVAILING HEXAGON TORQUE / NON MET. INS. M4	3	
N1.6109	27	Washer	WASHER D.24x 8,4x2 ZN DIN 9021/B	1	
N1.6130	28	Washer	WASHER D.10.5X30X2.5 ZN DIN 9021/B	4	
N1.6131	29	Washer	PLAIN WASHER M6 6,4x18x1,6 DIN 9021B GAL.	2	
N1.6138	30	Washer	WASHER D.8.4X21X4 ZN DIN 7349	4	
N1.6160	31	Washer	PLAIN WASHER M4 4,3x14x0,8 GALVANIZED	2	
N1.6196	32	Washer	PLAIN WASHER UNI 6593 M10 TYPE A 10.5x40x2.5	2	
N1.6201	33	Washer	SPRING LOCK WASHER DIN 127 -B- M10 ZN	6	
N1.6204	34	Washer	SPRING LOCK WASHER DIN 127 -B- M6 ZN	4	
N1.6215	35	Washer	SPRING LOCK WASHER DIN 127 -B- M8 ZN	11	
N1.7333	36	Screw	HEAD PIN SCREW DIN 7500-C M4x10 ZN	3	
N1.7341	37	Screw	HEAD PIN SCREW DIN 7500-C M6x20 ZN	1	
N11.1102	38	Bolt	CYLINDRICAL HEAD BOLT CL.8.8 DIN 912 M8x16 ZN	2	
N11.1121	39	Bolt	CYLINDRICAL HEAD BOLT CL.8.8 DIN 912 M6x10 ZN	4	
N11.1162	40	Screw	CYLINDRICAL HEAD SCREW DIN 912 M4x10 GAL.	1	
N2.1223	41	Seeger	SEEGER D.62 TYPE "J" UNI 3654/7437	1	
N2.3308	42	Key	KEY 8x7x40 UNI 6604	2	
N2.3314	43	Key	KEY 8x7x25 UNI 6604	1	
N2.5231	44	Spring	SPRING	1	

16.8422 Base unit FS1.0207GB Ø1650mm

Part no.	RIF	Description	Specification English	Quantity	Maintenance
N31.1143	45	Ball bearing	BALL BEARING 62305 2RS1 25x62x24	1	A
N4.7368	46	Chain	CHAIN 5/8"X3/8" 193 LINKS	1	
N4.7415	47	Link	LINK 5/8"X3/8"	1	
N5.2377	48	Micro	MICRO PIZZATO NF G020AA-DMK	1	C
N5.2554	49	Proximity	PROXIMITY M18 PNP NO CON. M12 (E=distance 2mm)	1	E
<b>GROUP MOTORGear FS11x (VALID UNTIL SERIAL NUMBER MACHINE 03.00004)</b>					
N51.1104	50	Motor/Gear	GEARBOX IEC 71 0.55KW/4 POLES 230/400V 50Hz	1	B-C
N51.1103	51	Motor	MOTOR IEC 71 0.55KW/4 POLES 230/400V 50Hz	1	B-C
N4.7645	52	Gear	GEAR NMRV_050_40,00_14*105_25_U_MV	1	B-C
<b>GROUP MOTORGear FS13x (VALID UNTIL SERIAL NUMBER MACHINE 02.00009)</b>					
N51.1104	50	Motor/Gear	GEARBOX IEC 71 0.55KW/4 POLES 230/400V 50Hz	1	B-C
N51.1103	51	Motor	MOTOR IEC 71 0.55KW/4 POLES 230/400V 50Hz	1	B-C
N4.7645	52	Gear	GEAR NMRV_050_40,00_14*105_25_U_MV	1	B-C
N1.1523	53	Screw	HEXAGON HEAD SCREW DIN 9339 M6x25 GAL.	1	
N1.5301	54	Nut	NUT M6 DIN 985 SHORT GALVANIZED	1	
N1.6163	55	Washer	PLAIN WASHER DIN 125A M6 6,4x12x1,6 GAL.	1	





16.8423

FROMM



**16.8423 Base unit FS1.0207GB Ø1650mm (2000 Kg)**

Part no.	RIF	Description	Specification English	Quantity	Maintenance
FS1.1379	1	Label	LABEL WITH DRAWING OF ARROW	1	C-E
FS1.2009Z	2	Support	SUPPORT FOR GEARBOX	1	
FS1.2011	3	Shaft	SHAFT	1	E
FS1.2026B	4	Carter	PAINTED MOTOR CARTER BLUE RAL 5010	1	A-E
FS1.2080B	5	Group	PAINTED BASE UNIT D.1650MM BLUE RAL 5010	1	A
FS1.2089B	6	Carter	CARTER FOR THE CHAIN	1	
FS1.2094G	7	Carter	CARTER	1	A
FS1.2096	8	Distance piece	DISTANCE PIECE	2	
FS1.2119	9	Cable	MICROSWITCH CABLE	1	
FS3.2088	10	Bracket	BRACKET SHAFT BASE UNIT	1	
FS3.2089	11	Bracket	BRACKET SUPPORT SENSOR BASE UNIT	1	
FS3.2099	12	Gear	GEAR 5/8"x3/8" Z=54	1	
FS3.2103	13	Pinion	PINION 5/8"x3/8" Z=18	1	
FS3.2144G	14	Disk	PAINTED DISK D.1650 YELLOW RAL 1021	1	A
FS3.2342	15	Label	FALL DANGER LABEL	1	E
FS3.2344	16	Label	FORKLIFT TRUCK LABEL	1	E
FS4.1017	17	Roller	ROLL (VALID UNTIL 31.12.2011)	16	A-C-D
FS4.0168	17	Roller	ROLL (VALID FROM 01.01.2012)	16	A-C-D
N1.1191	18	Screw	CYLINDRICAL HEAD CAP SCREW DIN 912 M4x25 BL.	2	
N1.1220	19	Screw	BUTTON HEAD SCREW ISO 7380 - M6 x 16	4	
N1.1228	20	Bolt	BUTTON HEAD BOLT M10x25 ZINCED UNI 7380	4	B
N1.1523	21	Screw	HEXAGON HEAD SCREW DIN 9339 M6x25 GAL.	1	B
N1.1546	22	Bolt	HEXAGONAL HEAD CAP BOLT M10x25 ZN DIN 933	2	B
N1.1557	23	Bolt	HEXAGONAL HEAD CAP BOLT M8x25 ZN DIN 933	4	B
N1.1588	24	Bolt	HEXAGONAL HEAD CAP BOLT M8x80 ZN DIN 933	1	B
N1.1589	25	Bolt	HEXAGONAL HEAD CAP BOLT M8x18 ZN DIN 933	4	B
N1.2183	26	Bolt	SOCKET CTRS. HD BOLT DIN 7991-A- M10 x 20	4	B
N1.5301	27	Nut	NUT M6 DIN 985 SHORT GALVANIZED	1	
N1.5307	28	Nut	PREVAILING HEXAGON TORQUE / NON MET. INS. M4	3	
N1.6109	29	Washer	WASHER D.24x 8,4x2 ZN DIN 9021/B	1	
N1.6130	30	Washer	WASHER D.10.5X30X2.5 ZN DIN 9021/B	4	
N1.6131	31	Washer	PLAIN WASHER M6 6,4x18x1,6 DIN 9021B GAL.	2	
N1.6138	32	Washer	WASHER D.8.4X21X4 ZN DIN 7349	4	
N1.6160	33	Washer	PLAIN WASHER M4 4,3x14x0,8 GALVANIZED	2	
N1.6163	34	Washer	PLAIN WASHER DIN 125A M6 6,4x12x1,6 GAL.	1	
N1.6196	35	Washer	PLAIN WASHER UNI 6593 M10 TYPE A 10.5x40x2.5	2	
N1.6201	36	Washer	SPRING LOCK WASHER DIN 127 -B- M10 ZN	6	
N1.6204	37	Washer	SPRING LOCK WASHER DIN 127 -B- M6 ZN	4	
N1.6215	38	Washer	SPRING LOCK WASHER DIN 127 -B- M8 ZN	11	
N1.7333	39	Screw	HEAD PIN SCREW DIN 7500-C M4x10 ZN	3	
N1.7341	40	Screw	HEAD PIN SCREW DIN 7500-C M6x20 ZN	1	
N11.1102	41	Bolt	CYLINDRICAL HEAD BOLT CL.8.8 DIN 912 M8x16 ZN	2	
N11.1121	42	Bolt	CYLINDRICAL HEAD BOLT CL.8.8 DIN 912 M6x10 ZN	4	
N11.1162	43	Screw	CYLINDRICAL HEAD SCREW DIN 912 M4x10 GAL.	1	
N2.1223	44	Seeger	SEEGER D.62 TYPE "J" UNI 3654/7437	1	

**16.8423 Base unit FS1.0207GB Ø1650mm (2000 Kg)**

Part no.	RIF	Description	Specification English	Quantity	Maintenance
N2.3308	45	Key	KEY 8x7x40 UNI 6604	2	
N2.3314	46	Key	KEY 8x7x25 UNI 6604	1	
N2.5231	47	Spring	SPRING	1	
N31.1143	48	Ball bearing	BALL BEARING 62305 2RS1 25x62x24	1	<b>A</b>
N4.7368	49	Chain	CHAIN 5/8"X3/8" 193 LINKS	1	
N4.7415	50	Link	LINK 5/8"X3/8"	1	
N5.2377	51	Micro	MICRO PIZZATO NF G020AA-DMK	1	<b>E</b>
N5.2554	52	Proximity	PROXIMITY M18 PNP NO CON. M12 (E=distance 2mm)	1	<b>E</b>

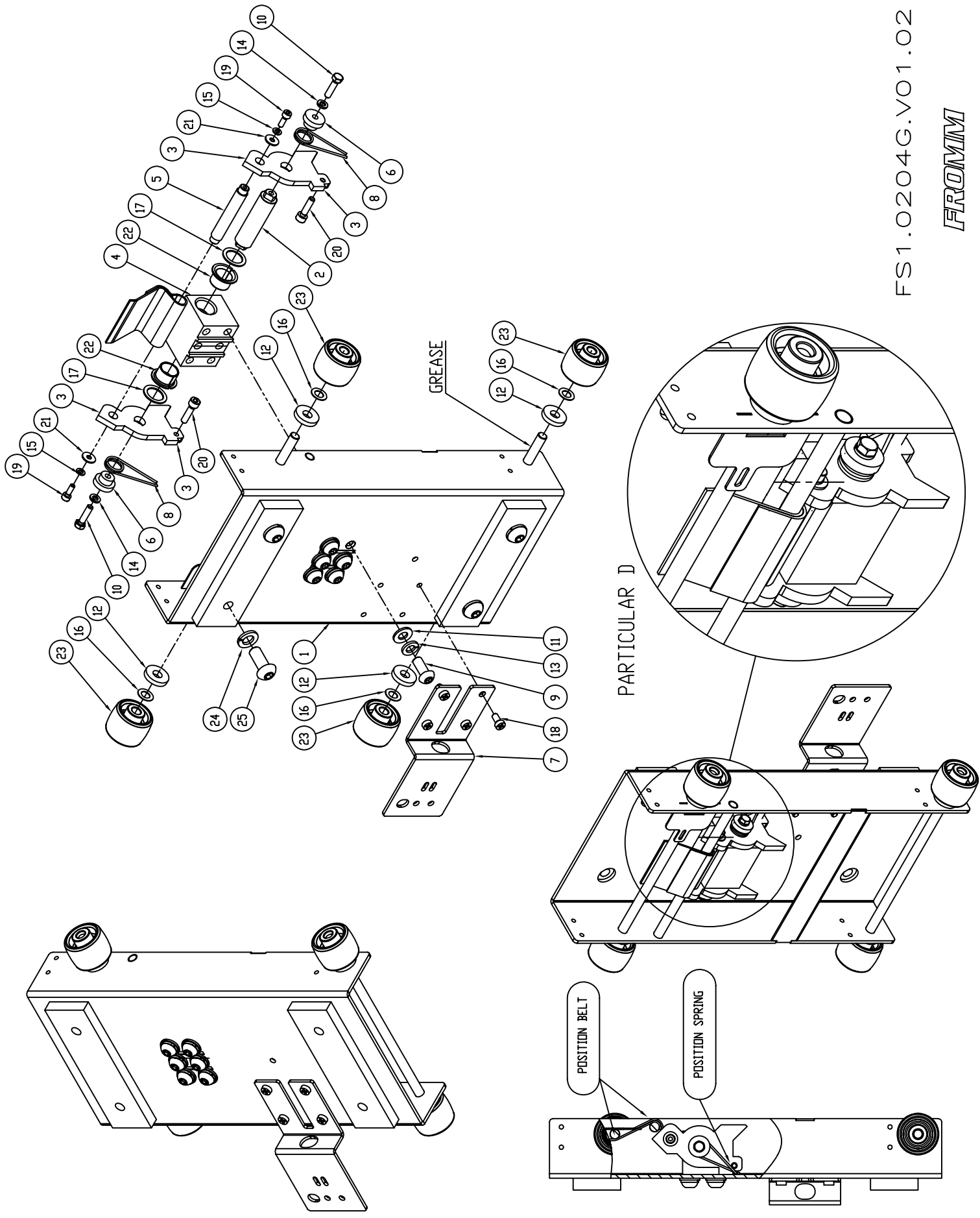
**GROUP MOTORGear FS11x (VALID UNTIL SERIAL NUMBER MACHINE 03.00004)**

N51.1104	53	Motor/Gear	GEARBOX IEC 71 0.55KW/4 POLES 230/400V 50Hz	1	<b>B-C</b>
N51.1103	54	Motor	MOTOR IEC 71 0.55KW/4 POLES 230/400V 50Hz	1	<b>B-C</b>
N4.7645	55	Gear	GEAR NMRV_050_40,00_14*105_25_U_MV	1	<b>B-C</b>

**GROUP MOTORGear FS13x (VALID UNTIL SERIAL NUMBER MACHINE 02.00009)**

N51.1104	53	Motor/Gear	GEARBOX IEC 71 0.55KW/4 POLES 230/400V 50Hz	1	<b>B-C</b>
N51.1103	54	Motor	MOTOR IEC 71 0.55KW/4 POLES 230/400V 50Hz	1	<b>B-C</b>
N4.7645	55	Gear	GEAR NMRV_050_40,00_14*105_25_U_MV	1	<b>B-C</b>



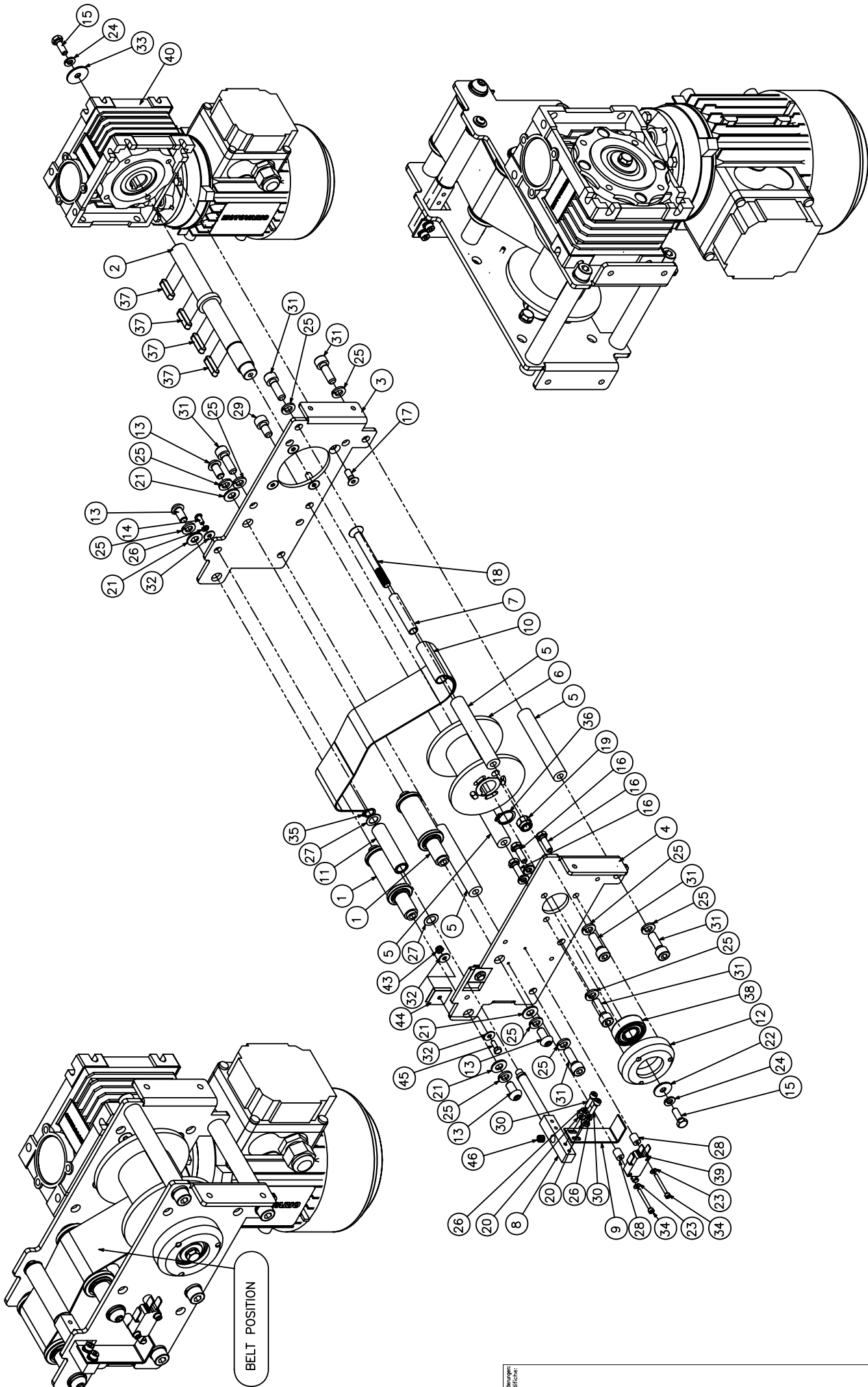


FS1.0204G.V01.02

FROMM

**FS1.0204G Group carriage for the mast yellow ral 1021**

Part no.	RIF	Description	Specification English	Quantity	Maintenance
FS1.2024G	1	Carriage	PAINTED CARRIAGE YELLOW RAL 1021	1	
FS1.2029	2	Pin	PIN	1	
FS1.2030Z	3	Plate	PLATE	2	<b>E</b>
FS1.2031	4	Block	BLOCK	1	
FS1.2032	5	Pin	PIN	1	
FS1.2034	6	Distance piece	DISTANCE PIECE	2	
FS1.2037G	7	Bracket	BRACKET YELLOW RAL 1021	1	
FS1.2076	8	Spring	SPRING	2	<b>E-D</b>
N1.1211	9	Bolt	BUTTON HEAD SCREW ISO 7380 - M8 x 20 ZINCED	6	<b>B</b>
N1.1504	10	Screw	HEXAGON HEAD BOLT DIN 933 - M5 x 20 ZINCED	2	
N1.6117	11	Washer	WASHER UNI 6592 M8 (8.4x16x1.6) ISO7089	6	
N1.6138	12	Washer	WASHER DIN 7349 M8 8,4X21X4 ZINCED	4	
N1.6215	13	Washer	SPRING LOCK WASHER DIN 127 -B- M8 GALVANIZED	6	
N1.6217	14	Washer	SPRING LOCK WASHER DIN 127 -B- M5 GALVANIZED	2	
N1.6219	15	Washer	SPRING LOCK WASHER DIN 127 -B- M4 GALVANIZED	2	
N1.6315	16	Distance piece	DISTANCE PIECE DIN 988 DIAM. 8x14x0,5	4	
N1.6375	17	Washer	SPECIAL WASHER TYPE "PS" 15x21x1	2	
N1.7331	18	Screw	HEAD PIN SCREW DIN 7500-C M5X10 ZINCED	4	
N11.1116	19	Screw	CYLINDRICAL HEAD CAP SCREW M4x12 ZN DIN 912	2	
N11.1119	20	Screw	CYLINDRICAL HEAD CAP SCREW M5x20 ZN DIN 912	2	
N11.6104	21	Washer	PLAIN WASHER 15x5.3x1.2 ISO 4759/3 ZINCED	2	
N3.3142	22	Bush	BUSH 15X17X12	2	
N4.2154	23	Wheel	WHEEL	4	<b>C</b>
N1.1228	24	Bolt	BUTTON HEAD SCREW UNI/ISO 7380 M10X25 GAL.	4	<b>B</b>
N1.6216	25	Washer	SPRING LOCK WASHER DIN 127 -B M10 GALVANIZED	4	<b>B</b>



FS1.0205.V01.03

*FROMM*

Alle  
Modifikationen

Seitenzahl 2/24  
Date der Ausgabe

**FS1.0205 Group Motor/gear for the belt**

Part no.	RIF	Description	Specification English	Quantity	Maintenance
FS1.0206	1	Roll	ROLL FOR THE BELT	2	E
FS1.2041	2	Shaft	SHAFT	1	
FS1.2043	3	Plate	PLATE	1	
FS1.2044	4	Plate	PLATE	1	
FS1.2045	5	Distance piece	DISTANCE PIECE	4	E
FS1.2048	6	Reel	REEL	1	E
FS1.2054	7	Cylinder	CYLINDER	1	
FS1.2057	8	Block	BLOCK FOR THE SENSOR	1	C
FS1.2058	9	Bracket	BRACKET FOR MICROSWITCH	1	E
FS1.2065	10	Belt	BELT	1	C
FS1.2068	11	Roller	CYLINDER	1	E
FS3.1073	12	Flange	FLANGE	1	
N1.1221	13	Bolt	BUTTON HEAD BOLT ISO 7380 - M8 x 16 ZINCED	4	B
N1.1230	14	Screw	BUTTON HEAD SCREW ISO 7380 - M4 x 10 ZINCED	1	
N1.1518	15	Bolt	HEXAGONAL HEAD CAP BOLT M6x18 ZN DIN 933	2	B
N1.1565	16	Bolt	HEXAGONAL HEAD CAP BOLT M6x20 ZN DIN 933	3	
N1.2111	17	Bolt	SOCKET CTRS. HD BOLT DIN 7991-A- M6 x 12	4	
N1.2139	18	Bolt	SOCKET CTRS. HD BOLT DIN 7991-A- M8 x 80	1	
N1.5305	19	Nut	NUT DIN 985 M14 ZINCED	1	
N1.6115	20	Washer	PLAIN WASHER DIN 125A M4 ZINCED	2	
N1.6117	21	Washer	PLAIN WASHER DIN 125A M8 DIAM.8,4X16X1,6 ZN	4	
N1.6141	22	Washer	PLAIN WASHER 6x20x1,5 ZINCED	1	
N1.6190	23	Washer	WASHER M3 DIN125 Di=3,2 De=7 sp=0,5	2	
N1.6204	24	Washer	SPRING LOCK WASHER DIN 127 -B- M6 ZN	5	
N1.6215	25	Washer	SPRING LOCK WASHER DIN 127 -B- M8 ZN	11	
N1.6219	26	Washer	SPRING LOCK WASHER DIN 127 -B- M4 ZN	3	
N1.6364	27	Washer	WASHER DIN 988 10X16X0.5	2	
N1.6379	28	Distance piece	DISTANCE PIECE d3,1xD8x10	2	
N11.1102	29	Bolt	CYLINDRICAL HEAD BOLT CL.8.8 DIN 912 M8x16 ZN	1	
N11.1117	30	Screw	CYLINDRICAL HEAD SCREW DIN 912 M4x16 ZN	2	
N11.1173	31	Screw	CYLINDRICAL HEAD CAP SCREW M8x25 ZN DIN 912	7	B
N11.6106	32	Washer	PLAIN WASHER M4 4.3x12 ISO 7093 ZN	5	
N11.6105	33	Washer	PLAIN WASHER UNI 6593 ISO 7093 M6 6.4x24 ZN	1	
N12.1114	34	Screw	CYLINDRICAL HEAD SCREW DIN 912 M3x30 ZN	2	
N2.1101	35	Seeger	SEEGER TYPE A DIN 471 UNI 3653-7435 D.10	1	
N2.1120	36	Seeger	SEEGER TYPE H DIN 471 UNI 3653-7435 D.18	1	
N2.3307	37	Key	KEY 6x6x25 UNI 6604	4	
N3.1182	38	Ball bearing	BALL BEARING 6202.2RS1 15x35x11	1	
N5.2375	39	Microswitch	MICROSWITCH OMRON D3V-166-M1C5	1	E

**GROUP MOTORGear FS11x (VALID UNTIL SERIAL NUMBER MACHINE 03.00004)**

N51.1102	40	Motor/Gear	MOTOR/GEAR IEC 63 0.18KW/4 POLES 230/400V 50Hz	1	E
N51.1101	41	Motor	MOTOR IEC63 B14 0.18KW	1	E
N4.7644	42	Gearbox	GEARBOX	1	E

**GROUP MOTORGear FS13x (VALID UNTIL SERIAL NUMBER MACHINE 02.00009)**

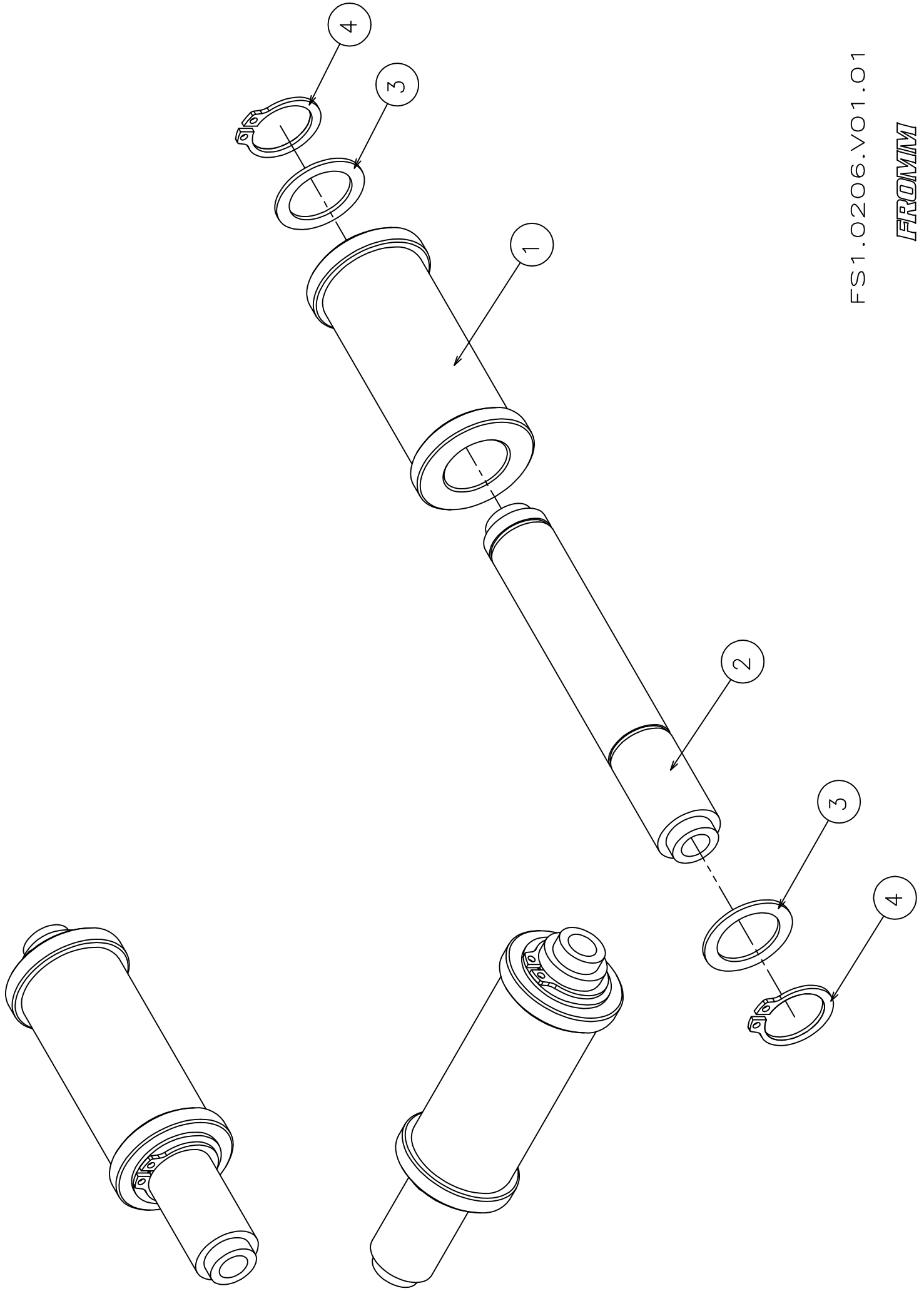
N51.1102	40	Motor/Gear	MOTOR/GEAR IEC 63 0.18KW/4 POLES 230/400V 50Hz	1	E
N51.1101	41	Motor	MOTOR IEC63 B14 0.18KW	1	E
N4.7644	42	Gearbox	GEARBOX	1	E

**FS1.0205 Group Motor/gear for the belt**

<b>Part no.</b>	<b>RIF Description</b>	<b>Specification English</b>	<b>Quantity</b>	<b>Maintenance</b>
N1.5307	43 Nut	NUT M4 DIN 985 SHORT GALVANIZED	2	
FS1.2099	44 Teflon	TEFLON	2	
N1.1556	45 Screw	HEXAGONAL HEAD CAP SCREW M4x12 ZN DIN 933	2	
N2.5159	46 Spring	SPRING 0.5X7X18 / 7.5	1	<b>E</b>





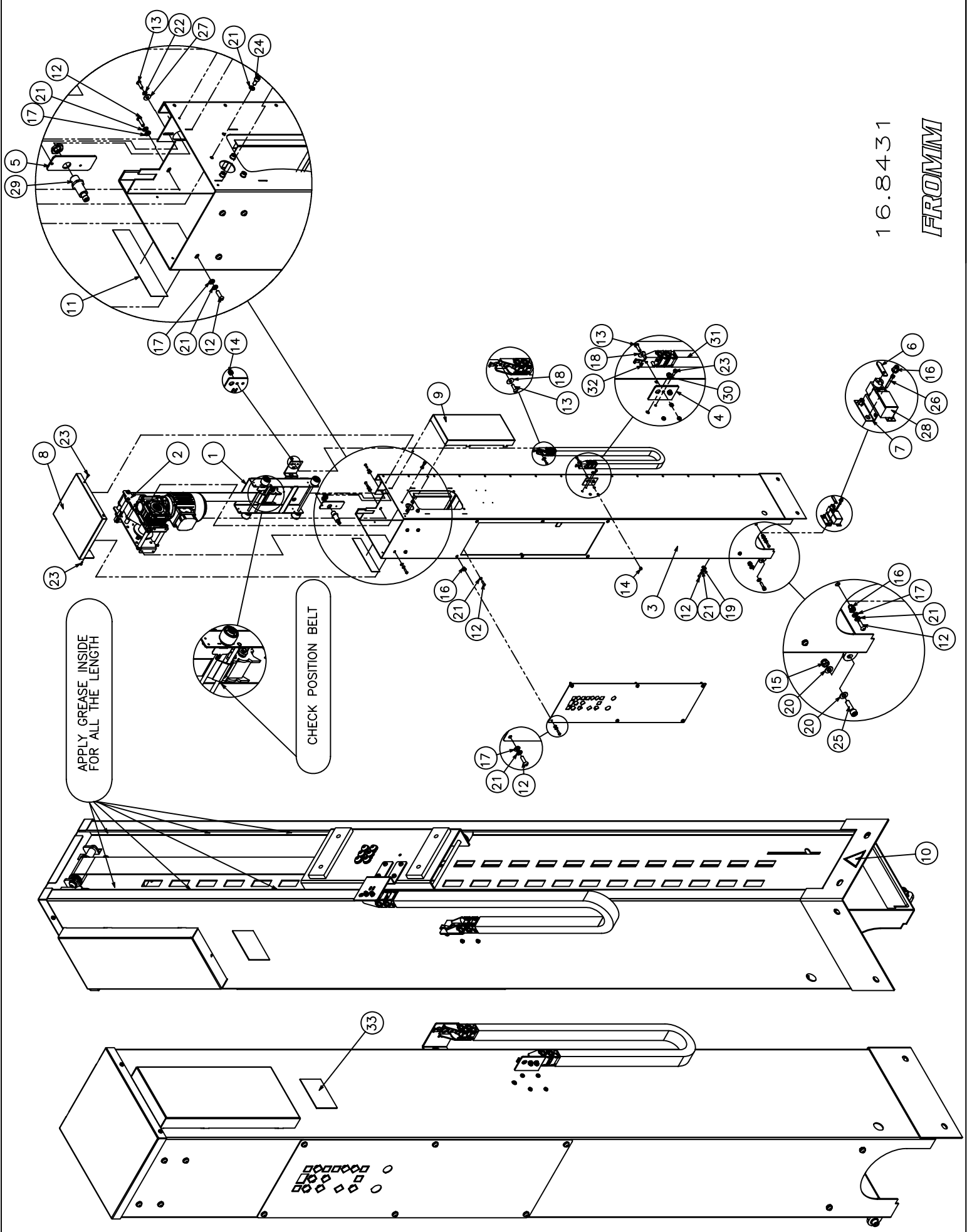


FS1.0206.V01.01

*FROMM*

**FS1.0206 Roll for the belt**

<b>Part no.</b>	<b>RIF</b>	<b>Description</b>	<b>Specification English</b>	<b>Quantity</b>	<b>Maintenance</b>
FS1.2013	1	Roll	ROLL	1	<b>C</b>
FS1.2056	2	Pin	PIN	1	
N1.6375	3	Washer	SPECIAL WASHER TYPE "PS" 15x21x1	2	
N2.1103	4	Seeger	SEEGER TYPE A DIN 471 UNI 3653-7435 D.15	2	

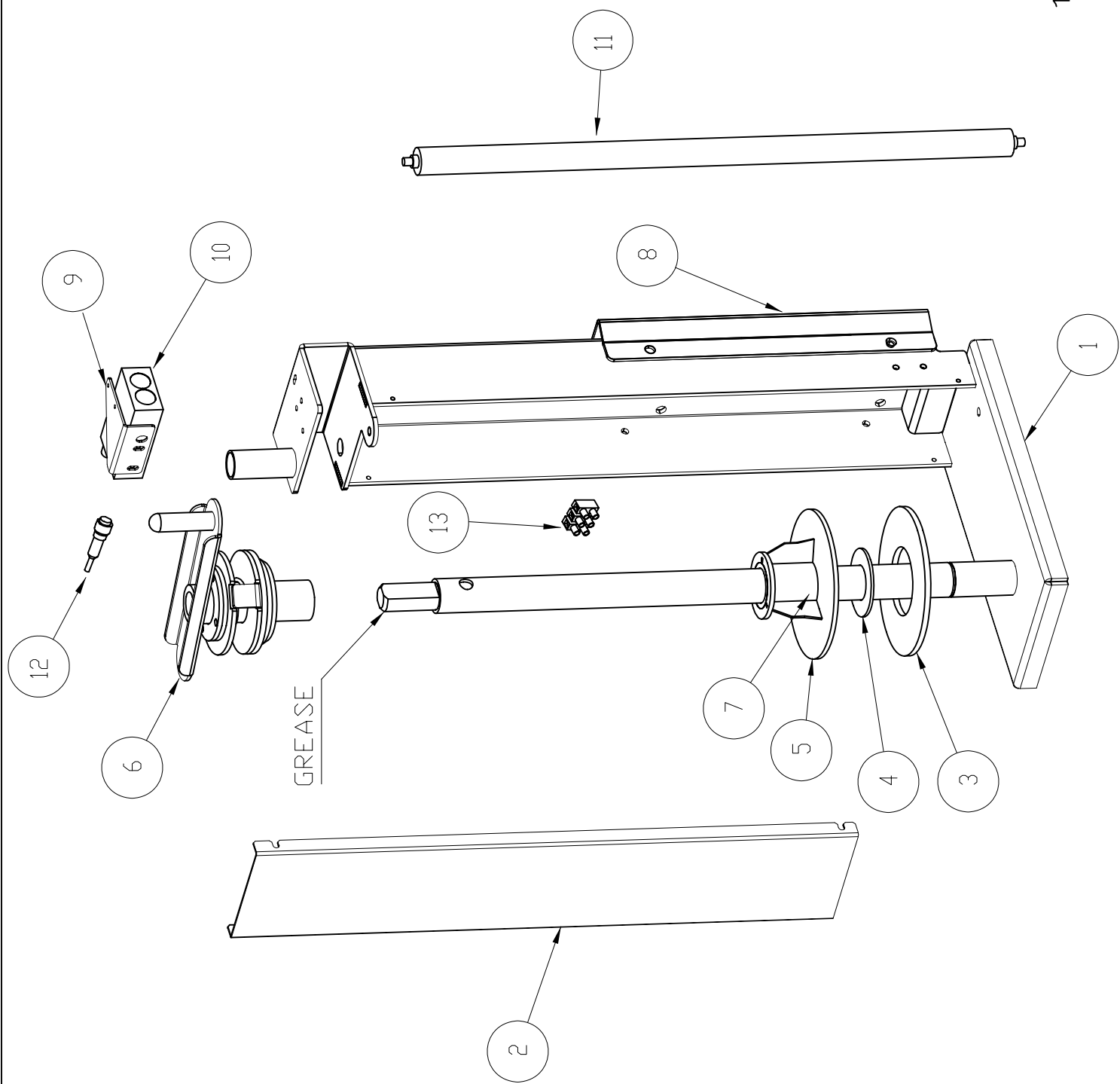


16.8431

FROMM

**16.8431 Mast FS1.0202GB H.2100mm**

Part no.	RIF	Description	Specification English	Quantity	Maintenance
FS1.0204G	1	Group	GROUP CARRIAGE FOR THE MAST YELLOW RAL 1021	1	E
FS1.0205	2	Group	MOTOR/GEAR FOR THE BELT	1	
FS1.2015B	3	Column	PAINTED COLUMN BLUE RAL 5010	1	A-E
FS1.2060B	4	Plate	PLATE FOR CABLE CHAIN BLUE RAL 5010	1	
FS1.2063Z	5	Plate	PLATE FOR PROXIMITY	1	
FS1.2064Z	6	Plate	PLATE FOR MICROSWITCH	1	
FS1.2067Z	7	Bracket	BRACKET FOR MICROSWITCH	1	
FS1.2070B	8	Carter	TOP CARTER BLUE RAL 5010	1	E
FS1.2071B	9	Carter	MOTOR CARTER BLUE RAL 5010	1	E
FS3.2343	10	Label	CRUSHING DANGER LABEL	1	C-E
FS4.1521	11	Sticker	RED STICKER PVC	1	
N1.1222	12	Screw	BUTTON HEAD SCREW ISO 7380 - M6 x 20 ZINCED	21	
N1.1225	13	Screw	BUTTON HEAD SCREW ISO 7380 - M5 x 16 ZINCED	6	
N1.5302	14	Nut	NUT DIN 985 M5 ZINCED	4	
N1.5305	15	Nut	NUT DIN 985 M14 ZINCED	2	
N1.5936	16	Rivet	RIVET HEXAGON HEAD M6 L=16	12	
N1.6114	17	Washer	PLAIN WASHER DIN 125A M6 6,4x12x1,6 ZINCED	13	
N1.6125	18	Washer	WASHER DIN 9021 M5 5,3X15X1,2 ZINCED	4	
N1.6131	19	Washer	PLAIN WASHER DIN 125 - 6,4 x 18 ZINCED	4	
N1.6164	20	Washer	PLAIN WASHER DIN 125A M8 8,4x16x1,6 ZN	4	
N1.6204	21	Washer	SPRING LOCK WASHER DIN 127 -B- M6	25	
N1.6217	22	Washer	SPRING LOCK WASHER DIN 127 -B- M5	1	
N1.7333	23	Screw	HEAD PIN SCREW M4x10 ZINCED UNI 8112	8	
N11.1136	24	Screw	CYLINDRICAL HEAD CAP SCREW M6x14 ZN DIN 912	4	
N11.1149	25	Bolt	CYLINDRICAL HEAD CAP BOLT M8x30 ZN DIN 912	2	
N11.1174	26	Screw	CYLINDRICAL HEAD CAP SCREW M4x30 ZN DIN 912	2	
N11.6104	27	Washer	PLAIN WASHER 15x5.3x1.2 ISO 4759/3 ZN	2	
N5.2358	28	Microswitch	MICROSWITCH FR531-A PIZZATO	1	E
N5.2554	29	Proximity	PROXIMITY M18 PNP NO CONN. M12 AK1/AP-1H	1	E
N5.3421	30	Rubber	RUBBER	1	
N5.3768	31	Cable chain	CABLE CHAIN WITH SUPPORT WITH 50 LINKS	1	E
N5.3769	32	Support	SUPPORT FOR CABLE CHAIN	1	
FS4.1184	33	Label	LABEL REGISTER FS	1	E

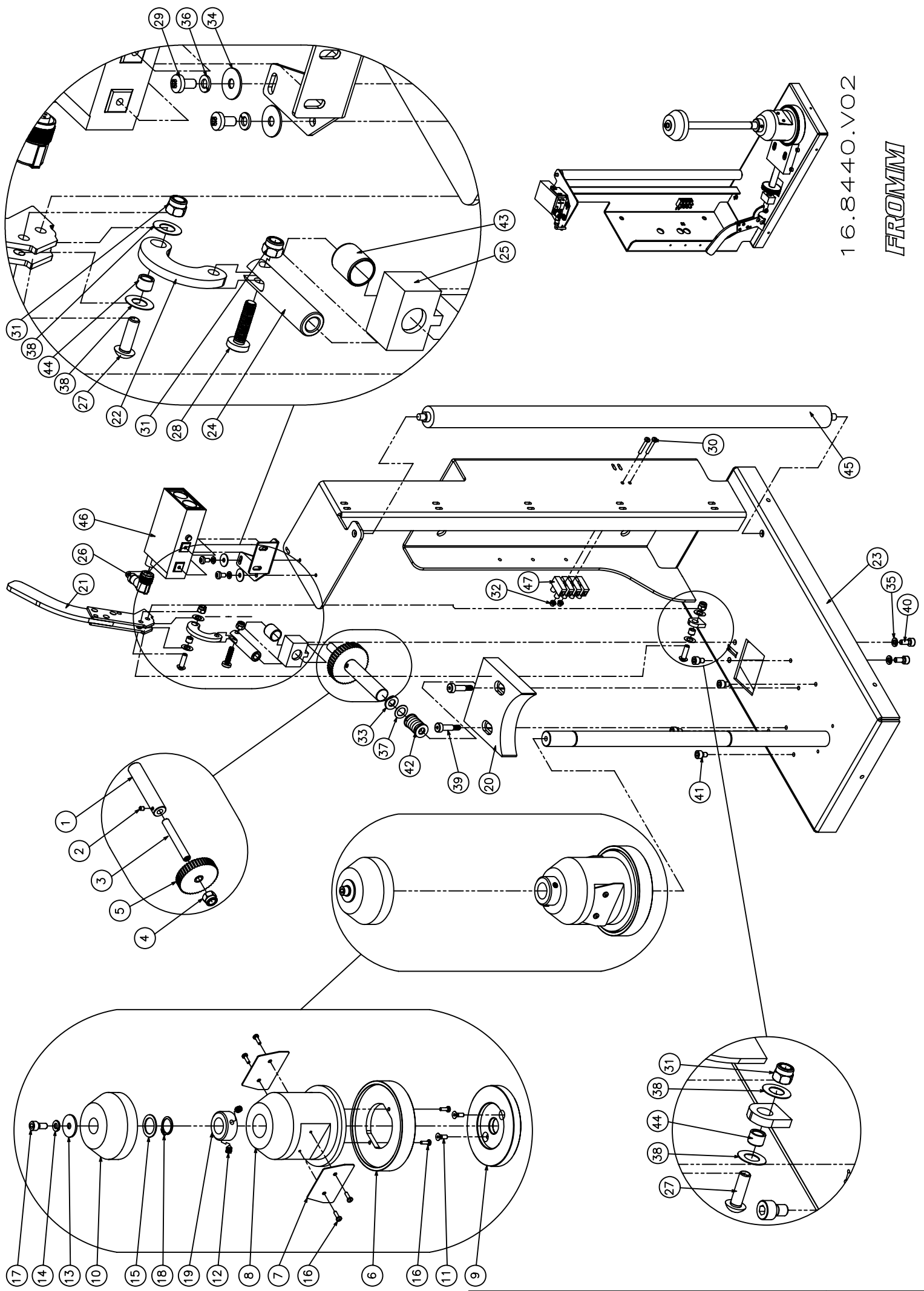


16.8440.V01

*FROMM*

**16.8440 Carriage 0 FS1.0209G Version 01**

<b>Part no.</b>	<b>RIF</b>	<b>Description</b>	<b>Specification English</b>	<b>Quantity</b>	<b>Maintenance</b>
FS1.2110	1	Frame	FRAME	1	<b>A</b>
FS1.2111	2	Cover	COVER	1	
FS3.2034	3	Friction	FRICTION DISK 130x60x5	1	<b>C</b>
FS1.2112	4	Washer	WASHER D.59,5xD.30,5xSP.2,5	1	
FS1.2113	5	Spool holder	SPOOL HOLDER	1	
FS1.2114	6	Handle	HANDLE	1	<b>C-D</b>
FS1.2115	7	Bush	BUSH	1	
FS1.2116	8	Fix	FIXING CARRIAGE	1	
FS1.2117	9	Support	PHOTOCELL SUPPORT	1	
N5.2635	10	Photocell	PHOTOCELL RX8/00-1A	1	<b>A</b>
N4.2210	11	Roll	ROLLS TYPE GL57 L=566MM	1	<b>A</b>
FS3.2193	12	Cable	PHOTOCELL CABLE FS300	1	<b>E</b>
N5.6701	13	Clamp	CLAMP 12 POLES	1	<b>E</b>



16.8440.V02

FROMM

Alle Maße in mm  
Modifiziert

Seitenzahl 2/2  
Aus 2008



**16.8440 Carriage 0 FS1.0214G Version 02**

Part no.	RIF	Description	Specification English	Quantity	Maintenance
FS1.2175	1	Pin	PIN	1	
N1.3113	2	Bolt	BOLT M6x16 DIN 913 GALVANIZED	1	
N1.3149	3	Bolt	BOLT M8x60 DIN 913 GALVANIZED	1	
N1.5305	4	Nut	NUT M8 DIN 985 GALVANIZED	1	
N1.5945	5	Washer	SPECIAL WHEEL/PINION FIL. M8	1	A-E
FS1.2174	6	Disk	DISK	1	A
FS3.2039	7	Bracket	HARMONIC STEEL PLATE SPOOL HOLDER LOCKER	2	
FS3.2184	8	Holder	SPOOL HOLDER	1	A
FS3.2211	9	Disk	DISK TO CENTRE THE SPOOL HOLDER FLANGE	1	A
FS3.2231	10	Holder	SPOOL HOLDER CENTRAL	1	
N1.2180	11	Screw	SOCKET CTRS. HD BOLT DIN 7991-A- M4x12 ZN	2	B
N1.3211	12	Bolt	BOLT M6x8 DIN 913 GALVANIZED	2	B
N1.6175	13	Washer	WASHER D.6x20x1.5 ZINCED	1	
N1.6204	14	Washer	SPRING LOCK WASHER DIN 127 -B- M6	1	
N1.6325	15	Washer	WASHER TYPE "PS" 18x25x1 DIN 988	1	
N1.7336	16	Screw	PHILIPS HEAD SCREW 3.5x10 ZINCED UNI 9707	6	
N11.1136	17	Screw	CYLINDRICAL HEAD CAP SCREWS DIN 912 M6x14 ZN	1	B
N2.1112	18	Seeger	SEEGER D.17 TYPE A DIN 471	1	
N7.2206	19	Metal ring	BLOCKING RING DIN 705 SHAPE C D. 18	1	
FS1.2155	20	Brake	BRAKE	1	C
FS1.2160	21	Lever	LEVER	1	
FS1.2161	22	Bracket	BRACKET	1	
FS1.2165	23	Structure	WELDED STRUCTURE	1	A
FS1.2168	24	Piston	PISTON	1	
FS1.2172	25	Block	BLOCK	1	
FS1.2178	26	Cable	CABLE FOR PHOTOCCELL	1	E
N1.1225	27	Screw	BUTTON HEAD SCREW M5x16 GALVANIZED ISO 7380	2	E
N1.1904	28	Screw	PHILIPS HEAD SCREW M5x20 GALVANIZED DIN 7985	1	E
N1.1911	29	Screw	PHILIPS HEAD SCREW M4x8 GALVANIZED DIN 7985	2	
N1.1916	30	Screw	PHILIPS HEAD SCREW 3x20 ZINCED DIN 7985A	2	
N1.5302	31	Nut	NUT M5 ZN DIN 985	3	
N1.5313	32	Nut	NUT M3 ZN DIN 985	2	
N1.6117	33	Washer	PLAIN WASHER M8 ZINCED DIN 435	1	
N1.6160	34	Washer	PLAIN WASHER M4 ZINCED DIN 435	2	
N1.6217	35	Washer	SPRING LOCK WASHER DIN 127 -B- M5	2	
N1.6219	36	Washer	SPRING LOCK WASHER DIN 127 -B- M4	2	
N1.6364	37	Washer	WASHER TYPE "PS" 16x10x0.5 DIN 988	1	
N1.6382	38	Washer	WASHER TYPE "PS" 7x13x0.3 DIN 988	4	
N1.7116	39	Screw	CYLINDRICAL HEAD CAP SCREWS M5 6x16 ZN	2	
N11.1101	40	Screw	CYLINDRICAL HEAD CAP SCREWS M5x12 ISO4762 ZN	2	
N11.1134	41	Screw	CYLINDRICAL HEAD CAP SCREWS M5x8 ISO4762 ZN	4	
N21.5122	42	Spring	SPRING	1	E
N3.3119	43	Bush	GLYCODUR PG121415F	1	
N3.3161	44	Bush	BUSH 5x7x5 - MB0505DU	1	
N4.2210	45	Roll	ROLLS TYPE GL57 L=566MM	1	A

16.8440 Carriage 0 FS1.0214G Version 02

Part no.	RIF Description	Specification English	Quantity	Maintenance
N5.2635	46 Photocell	PHOTOCELL RX8/00-1A	1	A
N5.6701	47 Clamp	CLAMP 12 POLES	1	E