

FROMM

ASSEMBLY INSTRUCTIONS

**Stretch Wrapping machine's
FS3xx/FS1xx Toppress Art. FS3.2669
(To add on existing machine)**

**Version 01 Machines
List Rev01**

Website : www.fromm-stretch.com

Assembly Instructions_FS3xx_FS1xx_V01.EN01/a.servisi/ © 01/15

FROMM Wrapping Systems S.r.l.

Assembly Instruction - TOPPRESS FS3xx/FS1xx - FS3.0261-EN_R00

Page: 1/1

ASSEMBLY INSTRUCTIONS – Toppres FS3xx/FS1xx

1. Remove the written “FROMM” from the mast;
2. In the top of the mast of the machine, we can have two different Top covers:

If you have bought the wrapping machine from 01 January 2014, you have already all the holes;

If you have bought the wrapping machine before 01 January 2014, you have an old version and for this reason the top cover need some new holes to fix the wrapping machine to the Toppres (look the drawing “Holes for Top Cover Mast Toppres” to see which holes need);

3. Fix the plate (**FS3.2722, circle 17**) to the top cover (already drilled) of the wrapping machine with the screws M4x8 (**N11.1115, circle 49**) and the washers M4 (**N1.6219, circle 42**);
4. Fix the top cover on the mast of the wrapping machine;
5. To lean the mast of the Toppres to the mast of the wrapping machine and to mark the holes on the mast of the wrapping machine:

If you have bought the wrapping machine from 01 January 2014, you have already all the holes and is enough widen them (diameter 4.5mm, look spare part list);

If you have bought the wrapping machine before 01 January 2014, you have an old version and for this reason you have to mark the holes on the mast of the wrapping machine and later to drill them (diameter 4.5mm, look spare part list);

6. To fix the Toppres to the mast of the wrapping machine with the screws M5x16 (**N1.7339, circle 47**) and to the cover with the screws M8x16 (**N11.1102, circle 48**), with the washers M8 (**N1.6215 circle 39 and N1.6164 circle 36**);
7. To connect the cables to the clamps of the Toppres (connect according ELS) and pass them in the holes “A” (inside of wrapping machine, remember the cable glands **N5.3413 circle 57**) and to put them side of the mast (between mast and electrical box of the wrapping machine).

Attention please, you don't put the cables behind the electrical box because they touch the chain (if you have FS3xx)

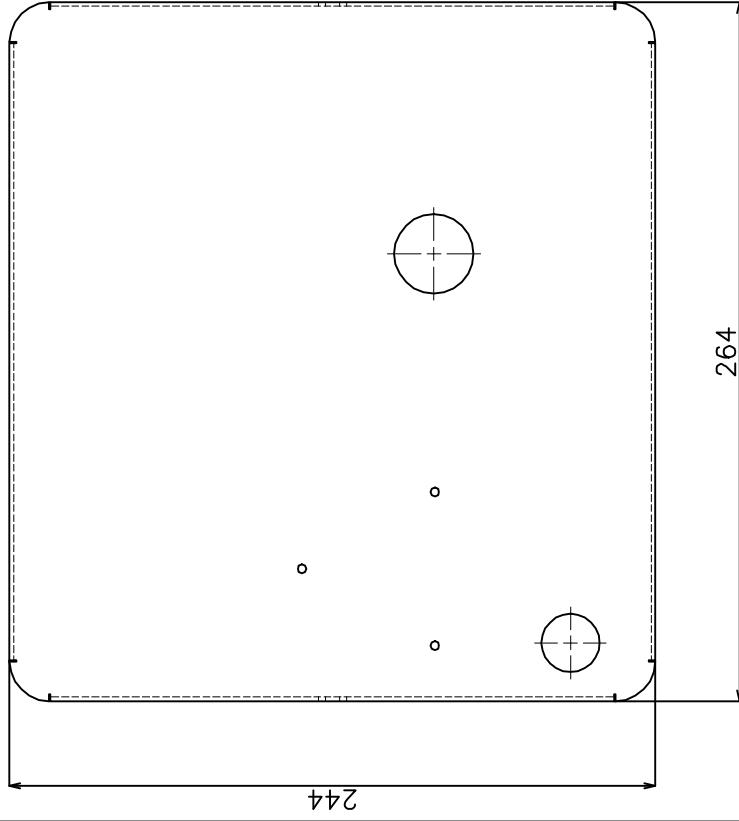
Now the cables have to pass under the electrical box and they will be fixed on the door.

You need to remove the “white light” on the door (near the emergency) and to fix the pushbutton (if you have FS3xx). With FS1xx need an hole on the plate door.

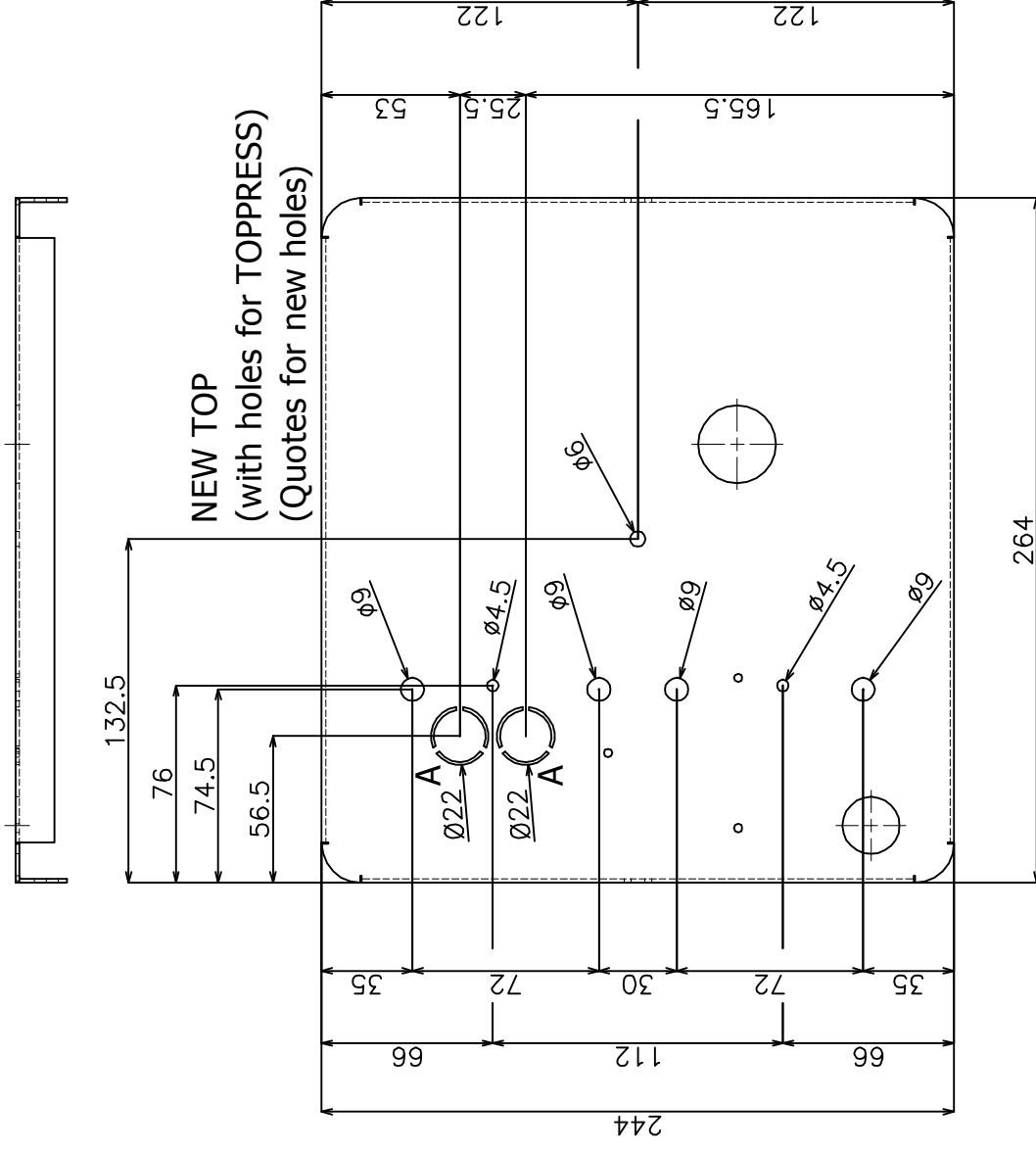
Anderungen:
Modifiche:

Gebrauch Zeich.
Uso del disegno

OLD TOP
(without holes for TOPPRESS)

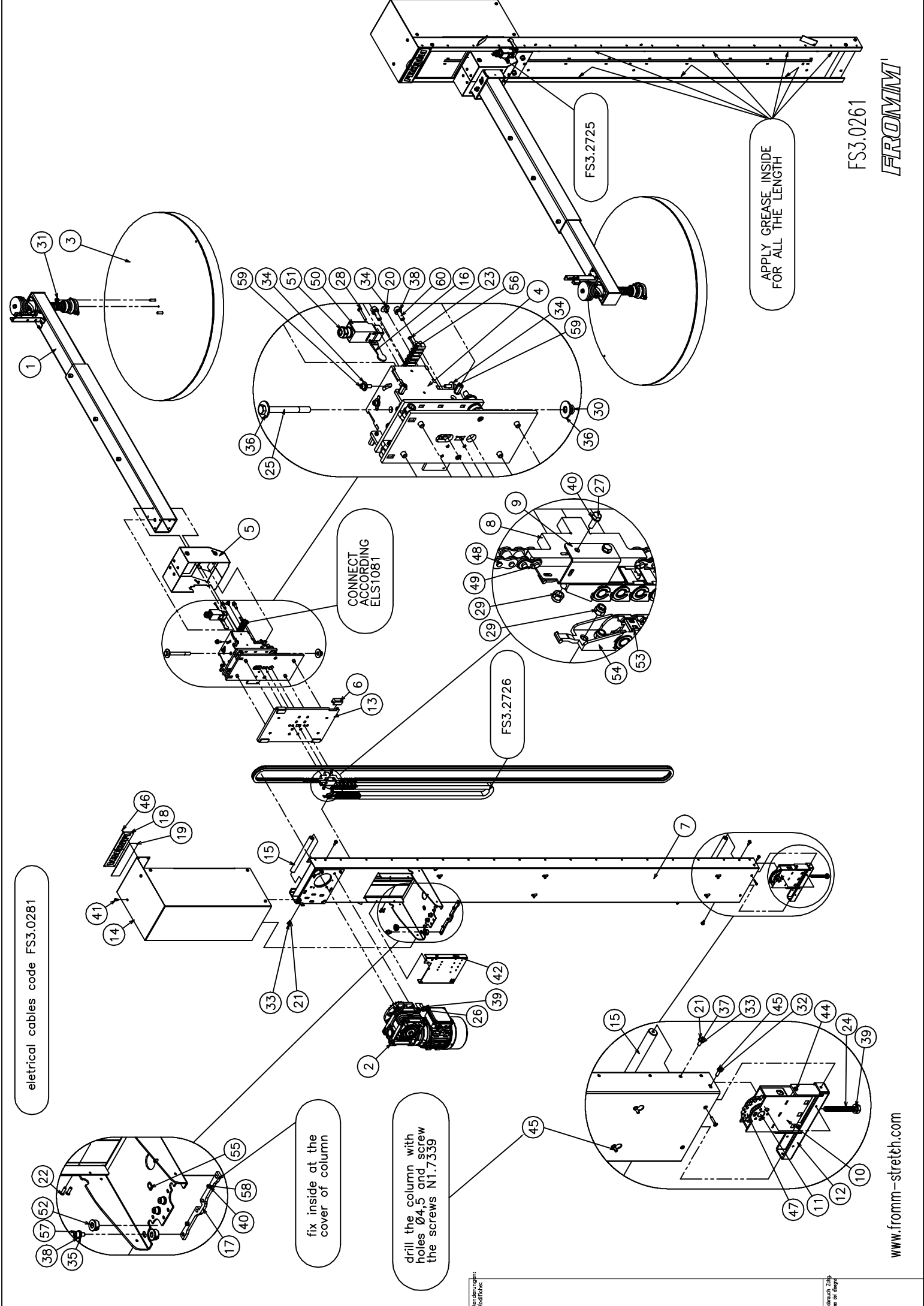


NEW TOP
(with holes for TOPPRESS)
(Quotes for new holes)



Anderungen: Modifiche:			Keine Nessuna Schede L'uso pezzi separata	Ersetzt durch Sostituito da Ersatz fuer Sostituisse	- - - -
Typ: Tipo:		Massstab Scala 1:2		Gezeichnet Disegnato Geprüft Controlato	
HOLES FOR TOP COVER MAST				Servizi 23-07-2014	
FROMMM				Gezeichnet Visto	
				FS3.2129	

Freimass-Toleranzen/Tolleranze della misure libere UNI - ISO 2768-MK					
---	--	--	--	--	--



FS3.0261

FROMM

electrical cables code FS3.0281

fix inside at the cover of column

drill the column with holes Ø4,5 and screw the screws N1.7339

Vermerkungen:
Hersteller:

Zeichnung Zählp.
für alle Anlagen

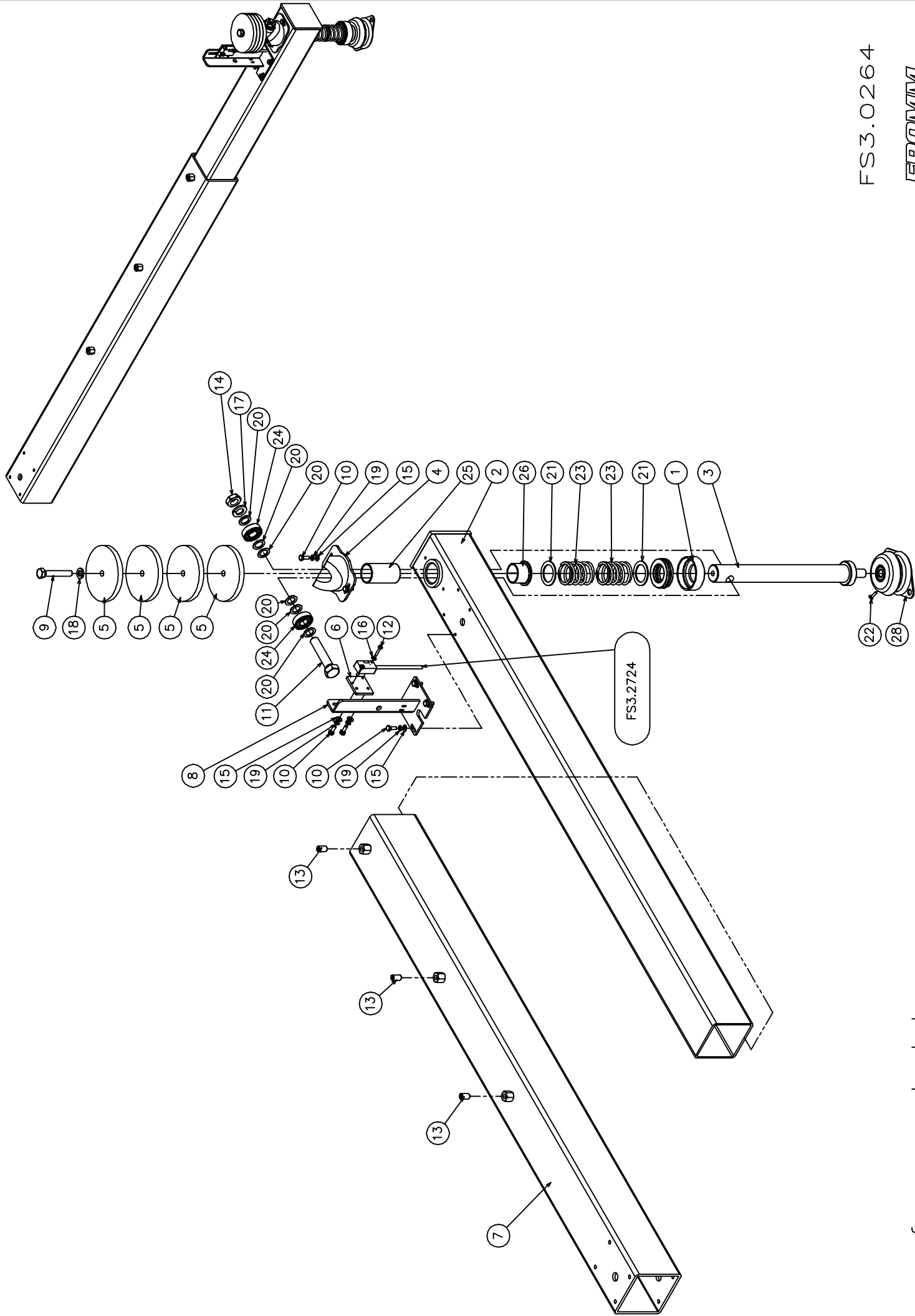
www.fromm-streth.com

FS3.0261 Toppres

Part no.	RIF	Description	Specification English	Q.ty
FS3.0264	1	Arm	ARM	1
FS3.0277	2	Group	GROUP MOTORGear	1
FS3.0278	3	Disk	COMPLETE DISK	1
FS3.0295	4	Group	GROUP CARRIAGE	1
FS3.0299	5	Group	GROUP CARTER	1
FS3.2120	6	Polizene	POLIZENE FOR PLATE CARRIAGE	4
FS3.2595	7	Mast	MAST	1
FS3.2596	8	Plate	PLATE FOR CABLE CHAIN	1
FS3.2597	9	Bracket	BRACKET	1
FS3.2603	10	Tensioner	TENSIONER FOR CHAIN	1
FS3.2610	11	Shaft	SHAFT	1
FS3.2613	12	Carter	CARTER	1
FS3.2650	13	Plate	PLATE SLIDING CARRIAGE IN THE COLUMN	1
FS3.2652	14	Carter	CARTER	1
FS3.2653	15	Block	MECHANICAL BLOCK	2
FS3.2717	16	Lever	LEVER FOR MICROSWITCH	1
FS3.2722	17	Plate	PLATE	1
FS4.1516	18	Label	LABEL BRAND FROMM	1
FS4.1521	19	Sticker	RED STICKER PVC	1
N1.1219	20	Screw	BUTTON HEAD SCREW ISO 7380 - M6 x 12 ZINCED	1
N1.1220	21	Screw	BUTTON HEAD SCREW ISO 7380 - M6 x 16	4
N1.1225	22	Screw	BUTTON HEAD SCREW ISO 7380 - M5 x 16 ZINCED	4
N1.1320	23	Bolt	PHILIPS HEAD BOLT M3x16 ZN UNI 5931	2
N1.1425	24	Bolt	HEXAGON HEAD BOLT DIN 933 - M10 x 80 ZINCED	1
N1.1510	25	Bolt	HEXAGON HEAD BOLT DIN 933 - M12 x 120 ZINCED	1
N1.1546	26	Bolt	HEXAGON HEAD BOLT DIN 933 - M10 x 25 ZINCED	4
N1.1556	27	Bolt	HEXAGON HEAD BOLT DIN 933 - M4 x 12 ZINCED	2
N1.1937	28	Bolt	PHILIPS HEAD BOLT M4x30 ZN UNI 5931	2
N1.5302	29	Nut	PREVAILING HEXAGON TORQUE / NON MET. INS. M5	4
N1.5304	30	Nut	PREVAILING HEXAGON TORQUE / NON MET. INS. M12	1
N1.5305	31	Nut	PREVAILING HEXAGON TORQUE / NON MET. INS. M8	2
N1.6103	32	Washer	PLAIN WASHER DIN 125 - 5,3 x 10	2
N1.6114	33	Washer	PLAIN WASHER DIN 125 - M6	4
N1.6131	34	Washer	PLAIN WASHER M6 6,4x18x1,6 DIN 9021B	9
N1.6164	35	Washer	PLAIN WASHER DIN 125 - M8	4
N1.6188	36	Washer	PLAIN WASHER M12 DIN 9021B	2
N1.6204	37	Washer	SPRING LOCK WASHER DIN 127 -B- M6	13
N1.6215	38	Washer	SPRING LOCK WASHER DIN 127 -B- M8	6
N1.6216	39	Washer	SPRING LOCK WASHER DIN 127 -B- M10	5
N1.6219	40	Washer	SPRING LOCK WASHER DIN 127 -B- M4	4
N1.7331	41	Screw	HEAD PIN SCREW M5x10 ZINCED UNI 8112	8
N1.7333	42	Screw	HEAD PIN SCREW M4x10 ZINCED UNI 8112	4
N1.7335	43	Screw	HEAD PIN SCREW M4x10 ZINCED UNI 8113	4
N1.7338	44	Screw	HEAD PIN SCREW M5x25 ZINCED UNI 8112	2

FS3.0261 Toppres

Part no.	RIF	Description	Specification English	Q.ty
N1.7339	45	Screw	HEAD PIN SCREW M5x16 ZINCED UNI 8112	8
N2.4902	46	Rivet	CYLINDRICAL HEAD CAP RIVET C15 D.1,85x4,76 NICK.	6
N4.7238	47	Pinion	PINION 1/2"X5/16" Z=18 + BALL BEARING	1
N4.7375	48	Chain	CHAIN 1/2"X5/16" 377 LINKS	1
N4.7413	49	Link	LINK 1/2"X5/16"	2
N5.2355	50	Microswitch	MICROSWITCH	1
N5.3332	51	Cablegland	CABLEGLAND PG. 13.5	1
N5.3413	52	Cablegland	CABLEGLAND	2
N5.3772	53	Cable chain	CABLE CHAIN	1
N5.3773	54	Bracket	BRACKET FOR CABLE CHAIN	1
N5.3822	55	Plastic	PLASTIC FOR CABLES	1
N5.6701	56	Clamp	CLAMP	1
N11.1102	57	Bolt	CYLINDRICAL HEAD CAP SCREWS DIN 912 M8 x 16	4
N11.1115	58	Screw	CYLINDRICAL HEAD CAP SCREWS DIN 912 M4 x 8	2
N11.1143	59	Screw	CYLINDRICAL HEAD CAP SCREWS DIN 912 M6 x 20	8
N11.1173	60	Bolt	CYLINDRICAL HEAD CAP SCREWS DIN 912 M8 x 25	2



FS3.0264

FROMM

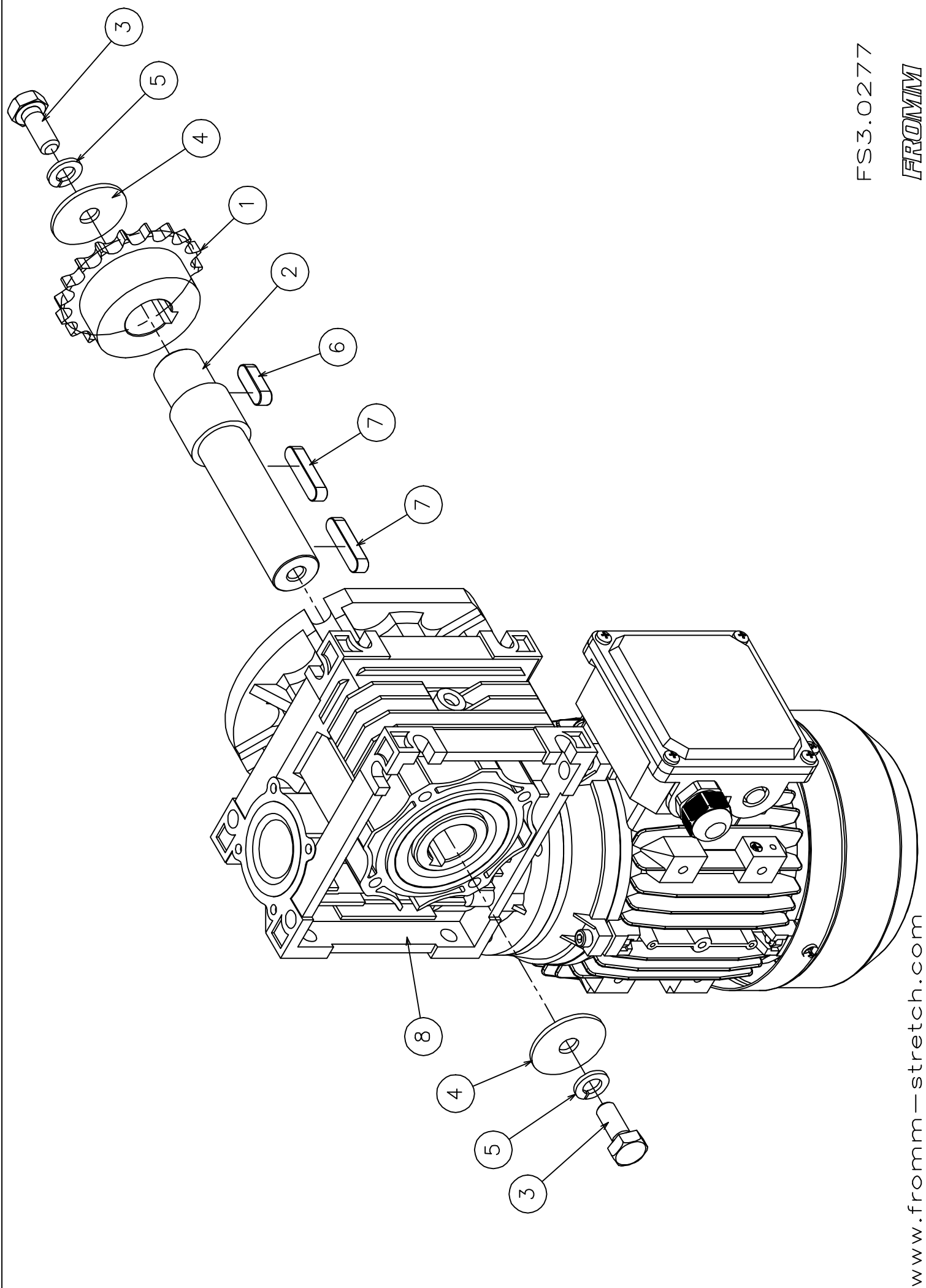
www.fromm-stretch.com

Verbindungen
Anschlüsse

Seitenansicht
von der Seite

FS3.0264G Arm Toppress

Part no.	RIF	Description	Specification English	Q.ty
FS3.1195	1	Flange	FLANGE	1
FS3.2630G	2	Tube	TUBE YELLOW RAL 1021	1
FS3.2632	3	Shaft	SHAFT	1
FS3.2635Z	4	Bracket	ADJUSTABLE BRACKET ZINCED	1
FS3.2636Z	5	Disk	DISK ZINCED	4
FS3.2637Z	6	Bracket	BRACKET ZINCED	1
FS3.2659G	7	Tube	TUBE YELLOW RAL 1021	1
FS3.2716G	8	Support	SUPPORT FOR PHOTOCCELL YELLOW RAL 1021	1
N1.1517	9	Bolt	HEXAGON HEAD SCREW DIN 933 - M8 x 50	1
N1.1556	10	Screw	HEXAGON HEAD SCREW M4x12 ZINCED UNI 5739	8
N1.1597	11	Bolt	HEXAGON HEAD SCREW DIN 933 - M12 x 60	1
N1.1914	12	Screw	CYLINDRICAL HEAD CAP SCREWS DIN 7985 M3 x 16	2
N1.3221	13	Bolt	BOLT M8x16 DIN 914 GLVANIZED	3
N1.5134	14	Nut	NUT M12 INOZ	1
N1.6115	15	Washer	PLAIN WASHER DIN 125 - M4	8
N1.6190	16	Washer	PLAIN WASHER DIN 125 - M3	2
N1.6214	17	Washer	SPRING LOCK WASHER DIN 127 -B- M12	1
N1.6215	18	Washer	SPRING LOCK WASHER DIN 127 -B- M8	1
N1.6219	19	Washer	SPRING LOCK WASHER DIN 127 -B- M4	8
N1.6318	20	Washer	WASHER TYPE "SS" D.12X18X1,2 DIN 988	6
N1.6334	21	Washer	WASHER TYPE "PS" D.25X35X1,5 DIN 988	2
N1.7336	22	Screw	HEAD PIN SCREW D.3.5 L=10 IRON C15	1
N2.5289	23	Spring	SPRING	2
N3.1106	24	Ball bearing	BALLBEARING 12 x 28 x 8	2
N3.3184	25	Bush	BUSH	1
N3.3187	26	Bush	BUSH 25x28x21,5	1
N3.4703	27	Ball bearing	BALLBEARING 25x42x11	1
N4.4305	28	Joint	JOINT	1



FS3.0277

FROMM

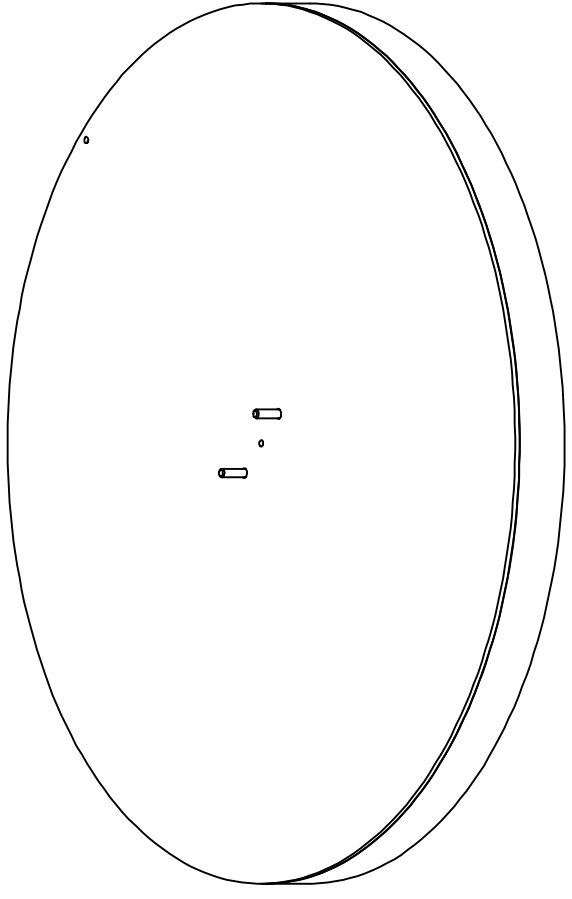
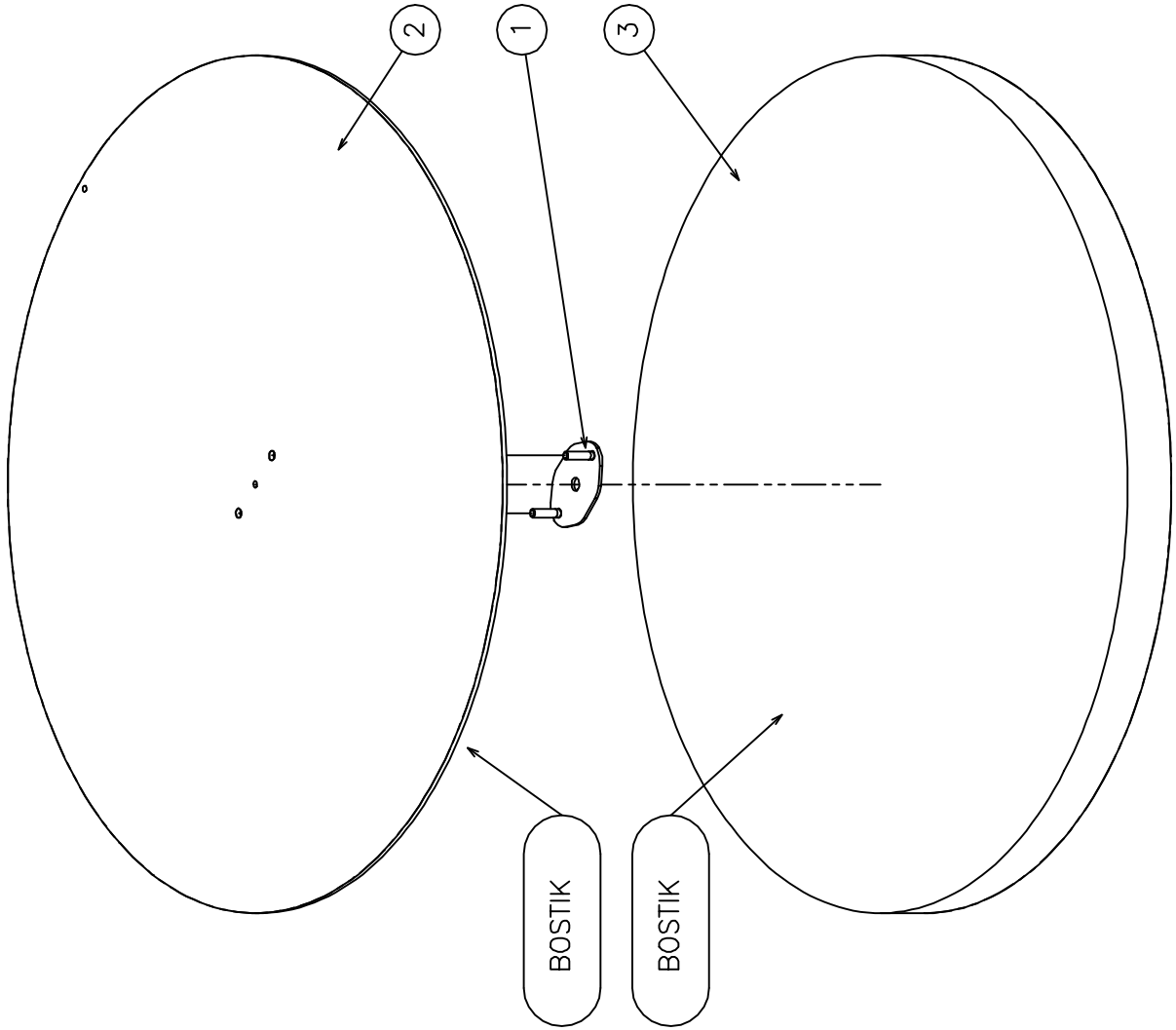
www.fromm-stretch.com

Verdrahtung
Kabelbaum

Zeichnung: 2004
Rev. 01

FS3.0277 Group motorgear Toppres

Part no.	RIF	Description	Specification English	Q.ty
FS3.2591	1	Pinion	PINION	1
FS3.2592	2	Shaft	SHAFT	1
N1.1546	3	Bolt	HEXAGON HEAD SCREW DIN 933 - M10 x 25	2
N1.6196	4	Washer	WASHER M10 - 10.5x40x2.5	2
N1.6216	5	Washer	SPRING LOCK WASHER DIN 127 -B- M10	2
N2.3314	6	Key	PARALLEL KEY DIN 6885 - A 8 x 7 x 25	1
N2.3355	7	Key	PARALLEL KEY DIN 6885 - A 8 x 7 x 35	2
N51.1136	8	Motor+gear	MOTOR+GEAR	1



Verbindungen
Kontrollieren

Stehens
An der Spitze

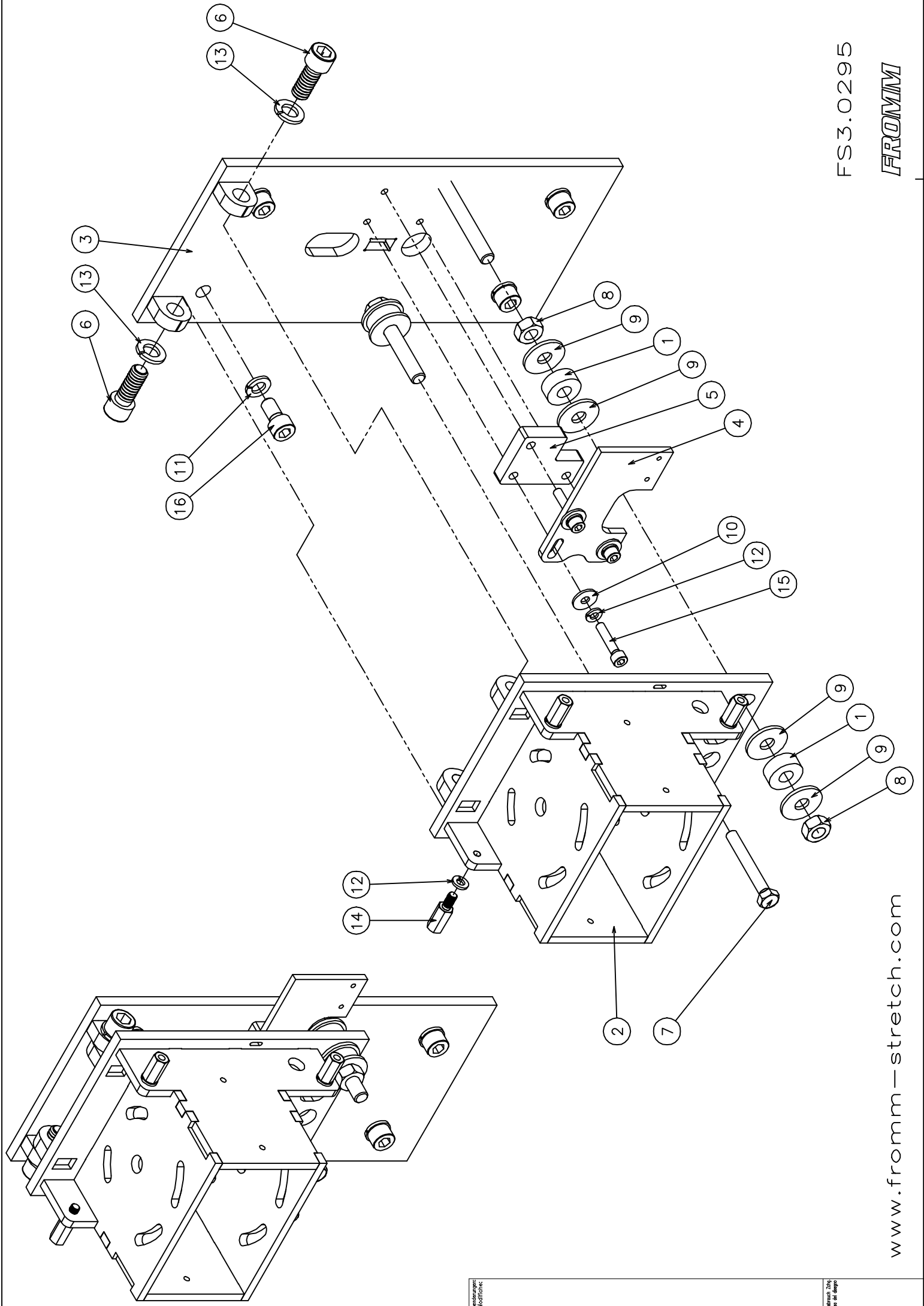
FS3.0278

FROMM

www.fromm-stretch.com

FS3.0278 Complete disk Toppress

Part no.	RIF	Description	Specification English	Q.ty
FS3.2645Z	1	Plate	PLATE ZINCED	1
FS3.2719	2	Topplate	TOPPLATE	1
FS4.1736	3	Sponge	SPONGE	1



FS3.0295

FROMM

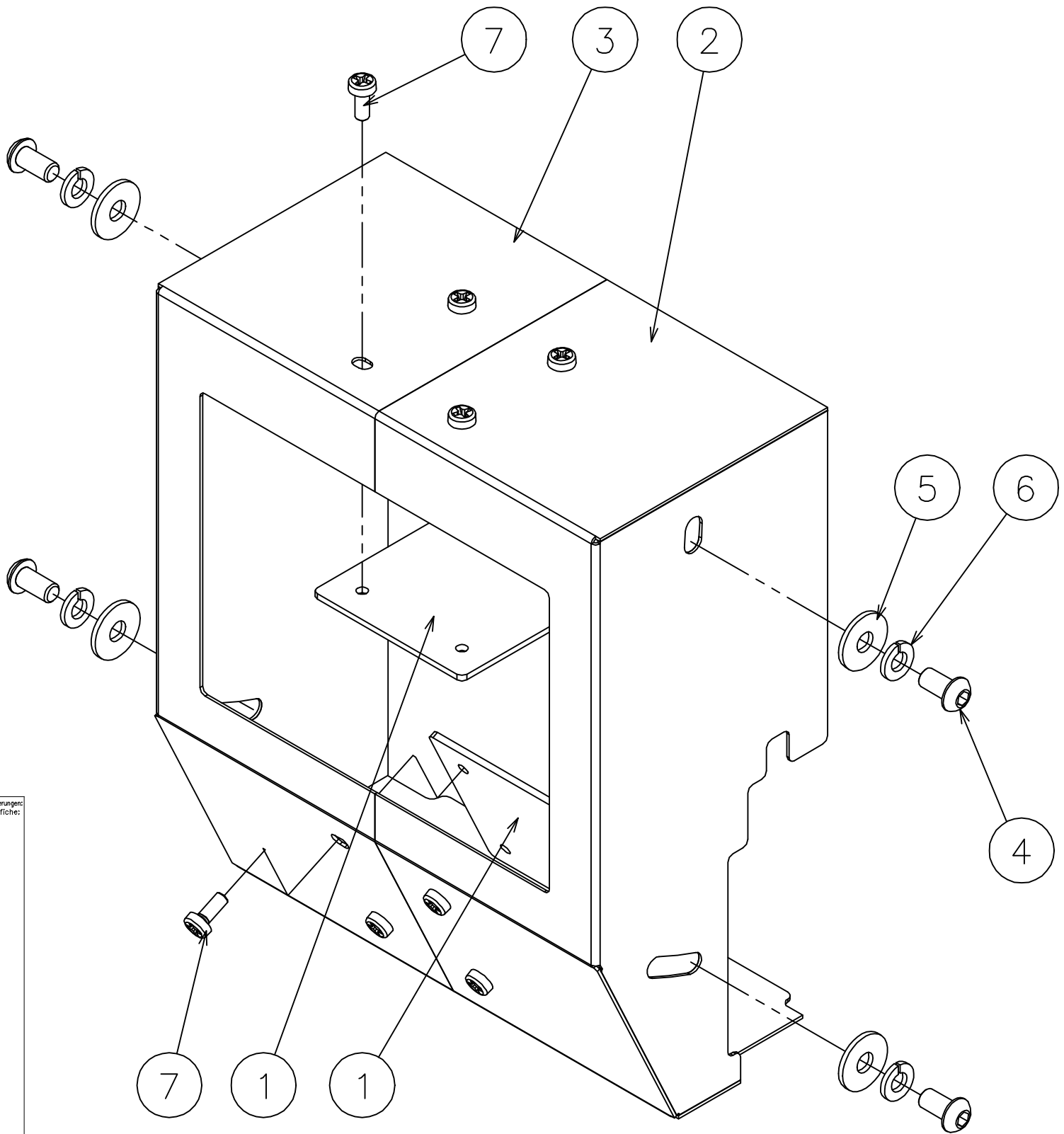
www.fromm-stretch.com

Veränderungen
ohne Anzeigung

© 2014 Fromm
Alle Rechte vorbehalten

FS3.0295 Group carriage Toppres

Part no.	RIF	Description	Specification English	Q.ty
FS3.2643	1	Spring	SPRING	4
FS3.2767Z	2	Bracket	BRACKET ZINCED	1
FS3.2768Z	3	Plate	PLATE ZINCED	1
FS3.2770Z	4	Bracket	BRACKET ZINCED	1
FS3.2771Z	5	Distance pie.	DISTANCE PIECE FOR MICRO ZINCED	1
N1.1137	6	Screw	CYLINDRICAL HEAD CAP SCREWS DIN 912 M12 x 30	2
N1.1576	7	Screw	HEXAGON HEAD SCREW DIN 933 CL 8.8 M8 X 60	1
N1.5108	8	Nut	NUT DIN 934 - M10	4
N1.6130	9	Washer	PLAIN WASHER M5 DIN 433	8
N1.6131	10	Washer	PLAIN WASHER M6 6,4x18x1,6 DIN 9021B	3
N1.6201	11	Washer	SPRING LOCK WASHER DIN 127 -B- M10	4
N1.6204	12	Washer	SPRING LOCK WASHER DIN 127 -B- M6	7
N1.6214	13	Washer	SPRING LOCK WASHER DIN 127 -B- M12	2
N5.3838	14	Distance pie.	DISTANCE PIECE M6 L=20MM	4
N11.1123	15	Screw	CYLINDRICAL HEAD CAP SCREWS DIN 912 M6 x 30	3
N12.1125	16	Screw	CYLINDRICAL HEAD CAP SCREWS DIN 912 M10 x 20	4



Anderungen:
Modifiche:

Petrucci Zing
Uso del disegno

FS3.0299G Group carter Toppress

Part no.	RIF	Description	Specification English	Q.ty
FS3.2772G	1	Plate	PLATE YELLOW RAL 1021	2
FS3.2773G	2	Bracket	CARTER YELLOW RAL 1021	1
FS3.2774G	3	Bracket	CARTER YELLOW RAL 1021	1
N1.1219	4	Screw	BUTTON HEAD SCREW ISO 7380 - M6 x 12 ZINCED	4
N1.6131	5	Washer	PLAIN WASHER M6 6,4x18x1,6 DIN 9021B	4
N1.6204	6	Washer	SPRING LOCK WASHER DIN 127 -B- M6	4
N1.7333	7	Screw	CYLINDRICAL HEAD SCREW UNI 8112 - M4 x 10	8