

FROMM

ASSEMBLY INSTRUCTIONS

**Stretch Wrapping machine's
FS3xx/FS1xx Toppress Art. FS3.2670
(Already included in the machine)**

**Version 01 Machines
List Rev01**

Website : www.fromm-stretch.com

Assembly Instructions_FS3xx_FS1xx_V01.EN01/a.servisi/ © 01/15

Assembly Instruction Toppress FS3xx/FS1xx

Group presser purchased with FS3xx/FS1xx serie wrapping machine.

Gruppo pressino acquistato con la macchina avvolgitrice serie FS3xx/FS1xx.



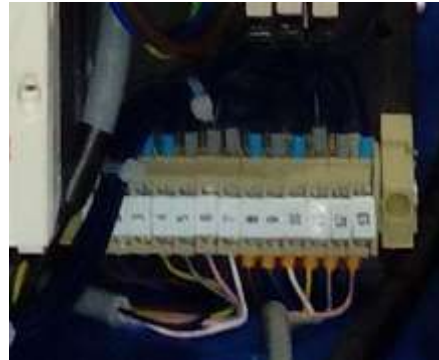
Fig.1 Packaging (first side)



Fig.2 Packaging (second side)



Fig.3



Details Fig.3



Fig.4
**Remove yellow
Togliere il carter**



Fig.5

Inserting the arm in the bracket (for movement toppress) and adjustment.
Inserire il braccio nella staffa per la movimentazione del toppress e regolarla.



Fig.6

To connection the wires looks next page for ELS "yellow remark".
Per connettere i cavi guarda pagina successiva ELS "evidenziati in giallo"



Details Fig.6

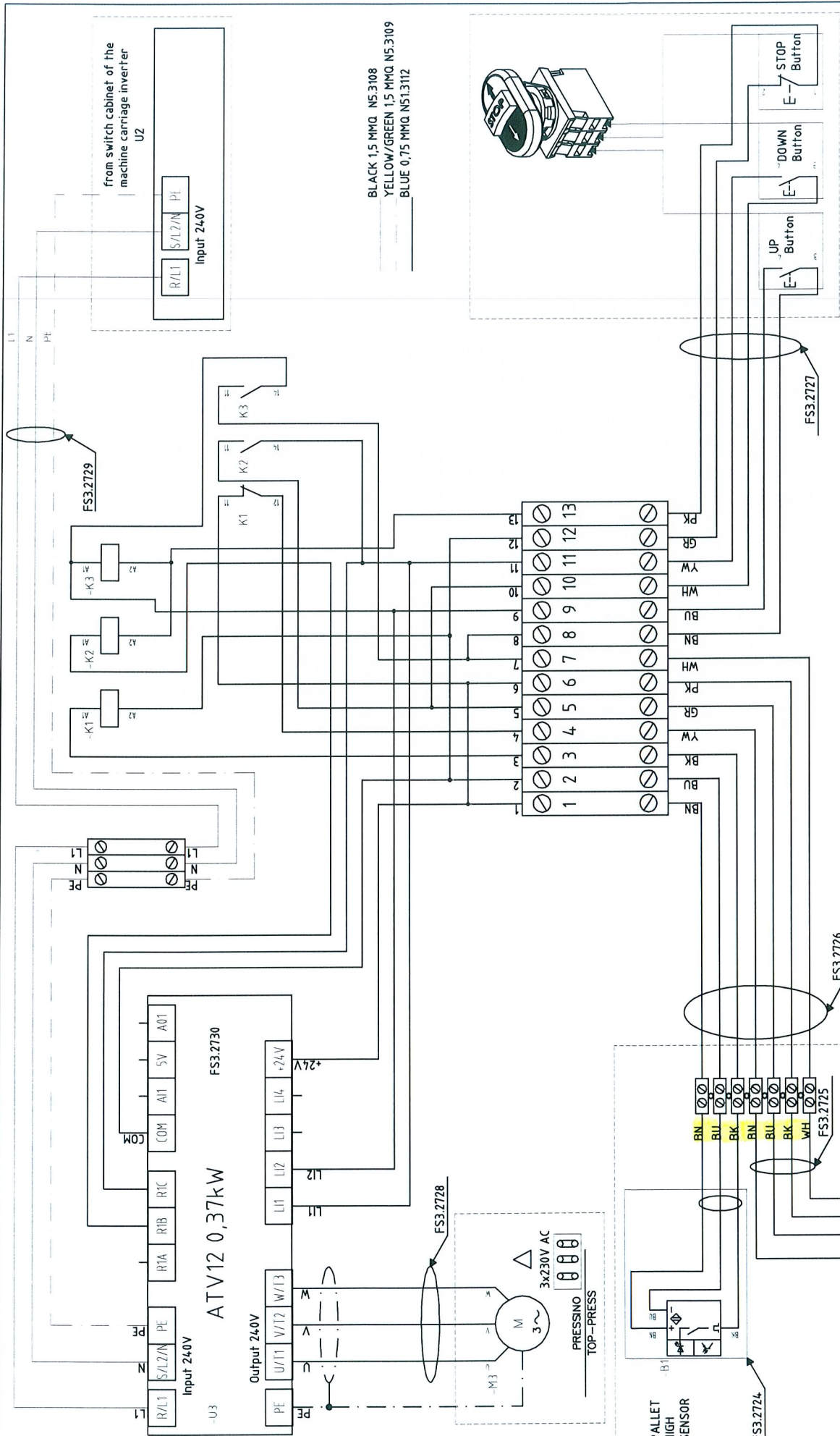


Fig.7

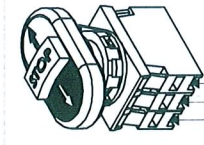


Fig.8

Modifiche:
 Änderungen:



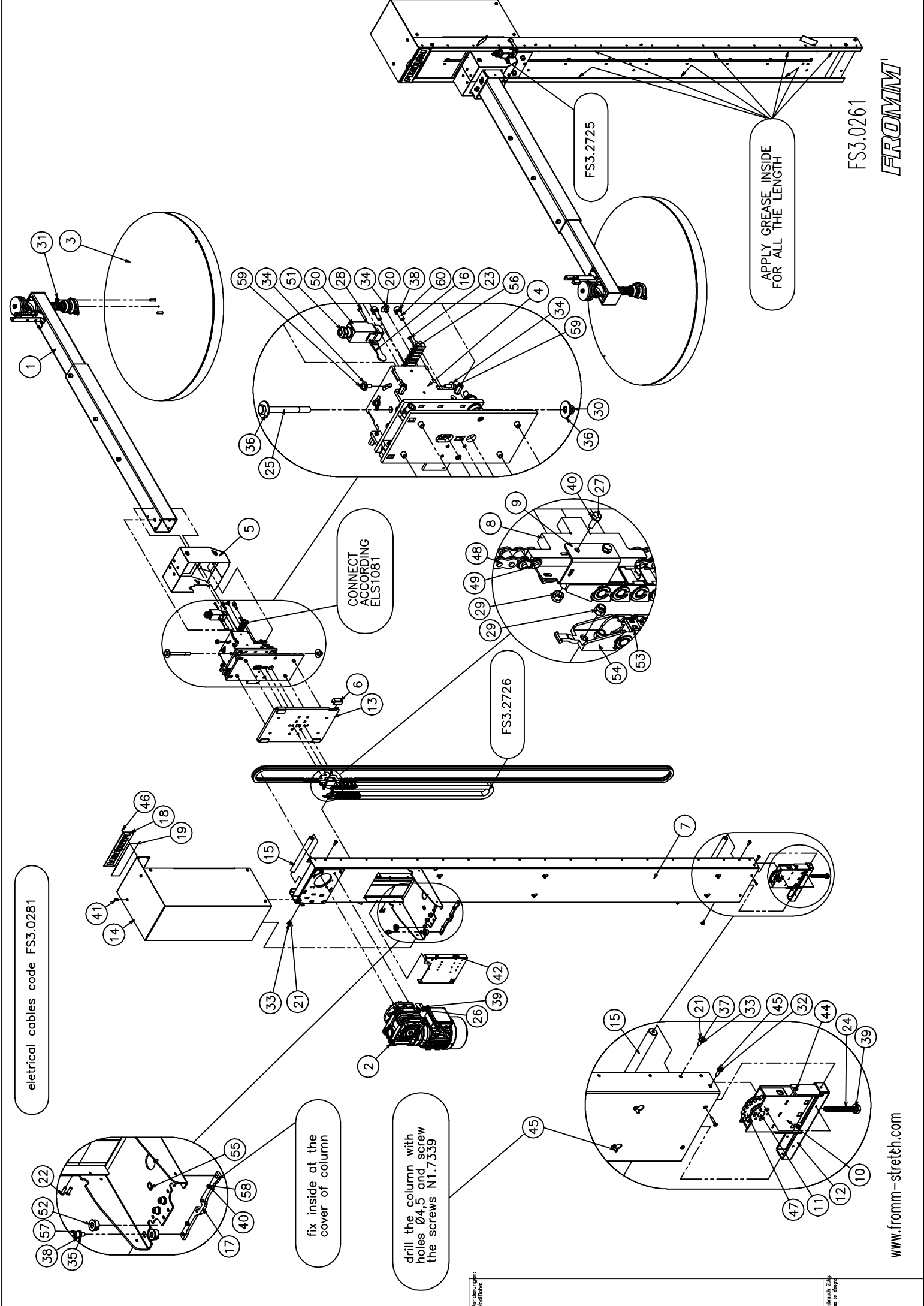
BLACK 1,5 MMQ. N5.3108
 YELLOW/GREEN 1,5 MMQ. N5.3109
 BLUE 0,75 MMQ. N5.13112



- BN = MARRONE = BROWN = MARRON
- WH = BIANCO = WEISS = WHITE = BLANC
- BU = BLU = BLAU = BLUE = BLEU
- BK = NERO = SCHWARZ = BLACK = NOIR
- YW = GIALLO = GELB = YELLOW = JUANE
- GR = VERDE = GRÜN = GREEN = VERT
- GR = GRIGIO = GREY = GREY = GRIS
- RD = ROSSO = ROIT = RED = ROUGE
- PK = ROSA = ROSE = PINK = ROSE

| | | | |
|----------------------------|--|-------------------|---|
| Aenderungen: Modifiche: | | | Es ist durch Sostituito da Ersatz fuer Sostituisce |
| Typ: Tipo: | | Massstab Scala | Gezeichnet Disegnato |
| TOP PRESS | | S. Scelta | S. Scelta |
| FROMM | | S. Scelta | S. Scelta |
| ELS. 1081 | | S. Scelta | S. Scelta |

Zeichnung / chg.
 I sso del disegno



electrical cables code FS3.0281

fix inside at the cover of column

drill the column with holes Ø4,5 and screw the screws N1.7339

APPLY GREASE INSIDE FOR ALL THE LENGTH

FS3.2725

FS3.2726

CONNECT ACCORDING ELS1081

FS3.0261

FROMM

www.fromm-streth.com

Vermerkungen:
Hersteller:

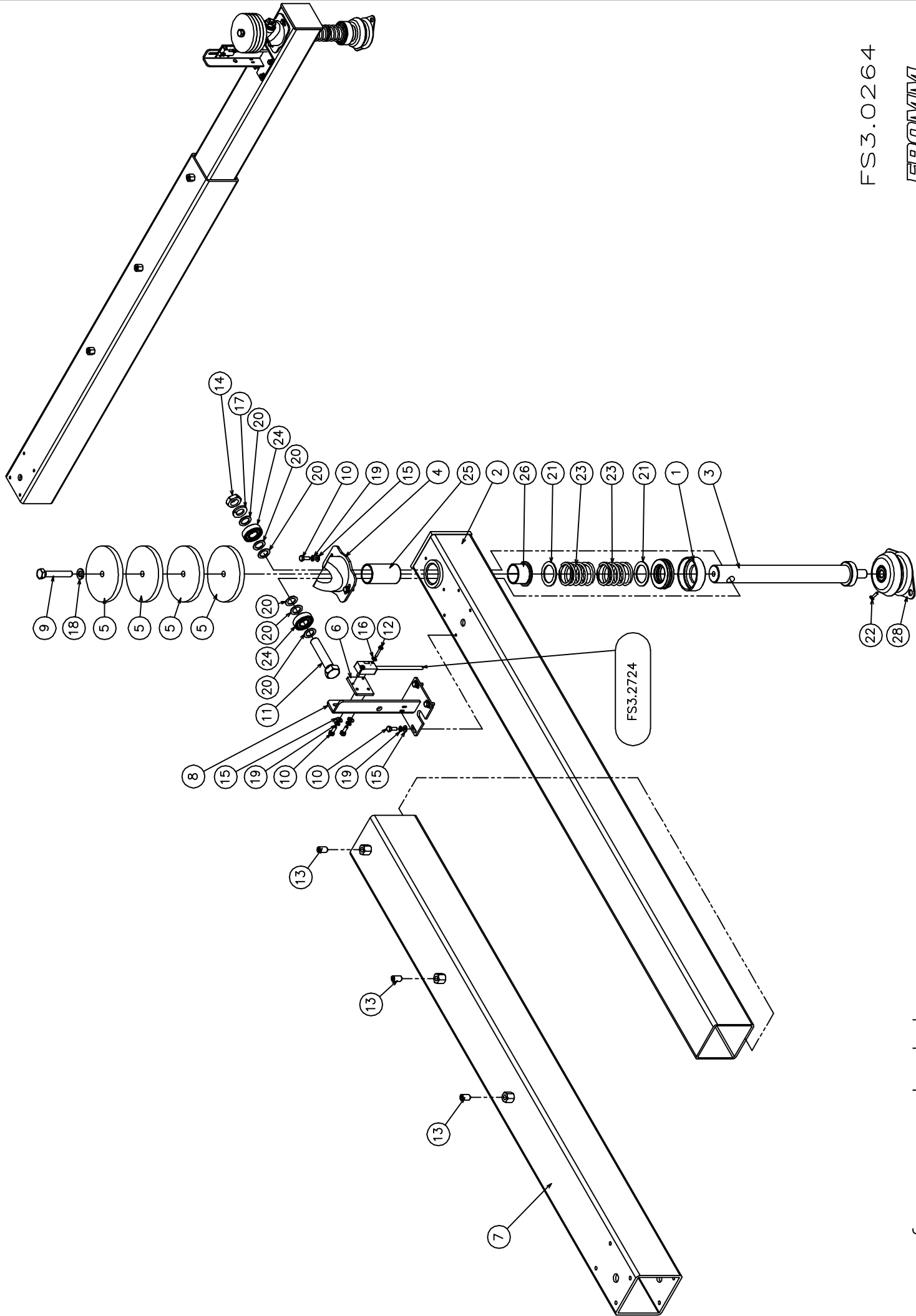
Zeichnung Zählp.
alle Maßangaben

FS3.0261 Toppres

| Part no. | RIF | Description | Specification English | Q.ty |
|----------|-----|-------------|---|------|
| FS3.0264 | 1 | Arm | ARM | 1 |
| FS3.0277 | 2 | Group | GROUP MOTORGear | 1 |
| FS3.0278 | 3 | Disk | COMPLETE DISK | 1 |
| FS3.0295 | 4 | Group | GROUP CARRIAGE | 1 |
| FS3.0299 | 5 | Group | GROUP CARTER | 1 |
| FS3.2120 | 6 | Polizene | POLIZENE FOR PLATE CARRIAGE | 4 |
| FS3.2595 | 7 | Mast | MAST | 1 |
| FS3.2596 | 8 | Plate | PLATE FOR CABLE CHAIN | 1 |
| FS3.2597 | 9 | Bracket | BRACKET | 1 |
| FS3.2603 | 10 | Tensioner | TENSIONER FOR CHAIN | 1 |
| FS3.2610 | 11 | Shaft | SHAFT | 1 |
| FS3.2613 | 12 | Carter | CARTER | 1 |
| FS3.2650 | 13 | Plate | PLATE SLIDING CARRIAGE IN THE COLUMN | 1 |
| FS3.2652 | 14 | Carter | CARTER | 1 |
| FS3.2653 | 15 | Block | MECHANICAL BLOCK | 2 |
| FS3.2717 | 16 | Lever | LEVER FOR MICROSWITCH | 1 |
| FS3.2722 | 17 | Plate | PLATE | 1 |
| FS4.1516 | 18 | Label | LABEL BRAND FROMM | 1 |
| FS4.1521 | 19 | Sticker | RED STICKER PVC | 1 |
| N1.1219 | 20 | Screw | BUTTON HEAD SCREW ISO 7380 - M6 x 12 ZINCED | 1 |
| N1.1220 | 21 | Screw | BUTTON HEAD SCREW ISO 7380 - M6 x 16 | 4 |
| N1.1225 | 22 | Screw | BUTTON HEAD SCREW ISO 7380 - M5 x 16 ZINCED | 4 |
| N1.1320 | 23 | Bolt | PHILIPS HEAD BOLT M3x16 ZN UNI 5931 | 2 |
| N1.1425 | 24 | Bolt | HEXAGON HEAD BOLT DIN 933 - M10 x 80 ZINCED | 1 |
| N1.1510 | 25 | Bolt | HEXAGON HEAD BOLT DIN 933 - M12 x 120 ZINCED | 1 |
| N1.1546 | 26 | Bolt | HEXAGON HEAD BOLT DIN 933 - M10 x 25 ZINCED | 4 |
| N1.1556 | 27 | Bolt | HEXAGON HEAD BOLT DIN 933 - M4 x 12 ZINCED | 2 |
| N1.1937 | 28 | Bolt | PHILIPS HEAD BOLT M4x30 ZN UNI 5931 | 2 |
| N1.5302 | 29 | Nut | PREVAILING HEXAGON TORQUE / NON MET. INS. M5 | 4 |
| N1.5304 | 30 | Nut | PREVAILING HEXAGON TORQUE / NON MET. INS. M12 | 1 |
| N1.5305 | 31 | Nut | PREVAILING HEXAGON TORQUE / NON MET. INS. M8 | 2 |
| N1.6103 | 32 | Washer | PLAIN WASHER DIN 125 - 5,3 x 10 | 2 |
| N1.6114 | 33 | Washer | PLAIN WASHER DIN 125 - M6 | 4 |
| N1.6131 | 34 | Washer | PLAIN WASHER M6 6,4x18x1,6 DIN 9021B | 9 |
| N1.6164 | 35 | Washer | PLAIN WASHER DIN 125 - M8 | 4 |
| N1.6188 | 36 | Washer | PLAIN WASHER M12 DIN 9021B | 2 |
| N1.6204 | 37 | Washer | SPRING LOCK WASHER DIN 127 -B- M6 | 13 |
| N1.6215 | 38 | Washer | SPRING LOCK WASHER DIN 127 -B- M8 | 6 |
| N1.6216 | 39 | Washer | SPRING LOCK WASHER DIN 127 -B- M10 | 5 |
| N1.6219 | 40 | Washer | SPRING LOCK WASHER DIN 127 -B- M4 | 4 |
| N1.7331 | 41 | Screw | HEAD PIN SCREW M5x10 ZINCED UNI 8112 | 8 |
| N1.7333 | 42 | Screw | HEAD PIN SCREW M4x10 ZINCED UNI 8112 | 4 |
| N1.7335 | 43 | Screw | HEAD PIN SCREW M4x10 ZINCED UNI 8113 | 4 |
| N1.7338 | 44 | Screw | HEAD PIN SCREW M5x25 ZINCED UNI 8112 | 2 |

FS3.0261 Toppres

| Part no. | RIF | Description | Specification English | Q.ty |
|----------|-----|-------------|--|------|
| N1.7339 | 45 | Screw | HEAD PIN SCREW M5x16 ZINCED UNI 8112 | 8 |
| N2.4902 | 46 | Rivet | CYLINDRICAL HEAD CAP RIVET C15 D.1,85x4,76 NICK. | 6 |
| N4.7238 | 47 | Pinion | PINION 1/2"X5/16" Z=18 + BALL BEARING | 1 |
| N4.7375 | 48 | Chain | CHAIN 1/2"X5/16" 377 LINKS | 1 |
| N4.7413 | 49 | Link | LINK 1/2"X5/16" | 2 |
| N5.2355 | 50 | Microswitch | MICROSWITCH | 1 |
| N5.3332 | 51 | Cablegland | CABLEGLAND PG. 13.5 | 1 |
| N5.3413 | 52 | Cablegland | CABLEGLAND | 2 |
| N5.3772 | 53 | Cable chain | CABLE CHAIN | 1 |
| N5.3773 | 54 | Bracket | BRACKET FOR CABLE CHAIN | 1 |
| N5.3822 | 55 | Plastic | PLASTIC FOR CABLES | 1 |
| N5.6701 | 56 | Clamp | CLAMP | 1 |
| N11.1102 | 57 | Bolt | CYLINDRICAL HEAD CAP SCREWS DIN 912 M8 x 16 | 4 |
| N11.1115 | 58 | Screw | CYLINDRICAL HEAD CAP SCREWS DIN 912 M4 x 8 | 2 |
| N11.1143 | 59 | Screw | CYLINDRICAL HEAD CAP SCREWS DIN 912 M6 x 20 | 8 |
| N11.1173 | 60 | Bolt | CYLINDRICAL HEAD CAP SCREWS DIN 912 M8 x 25 | 2 |



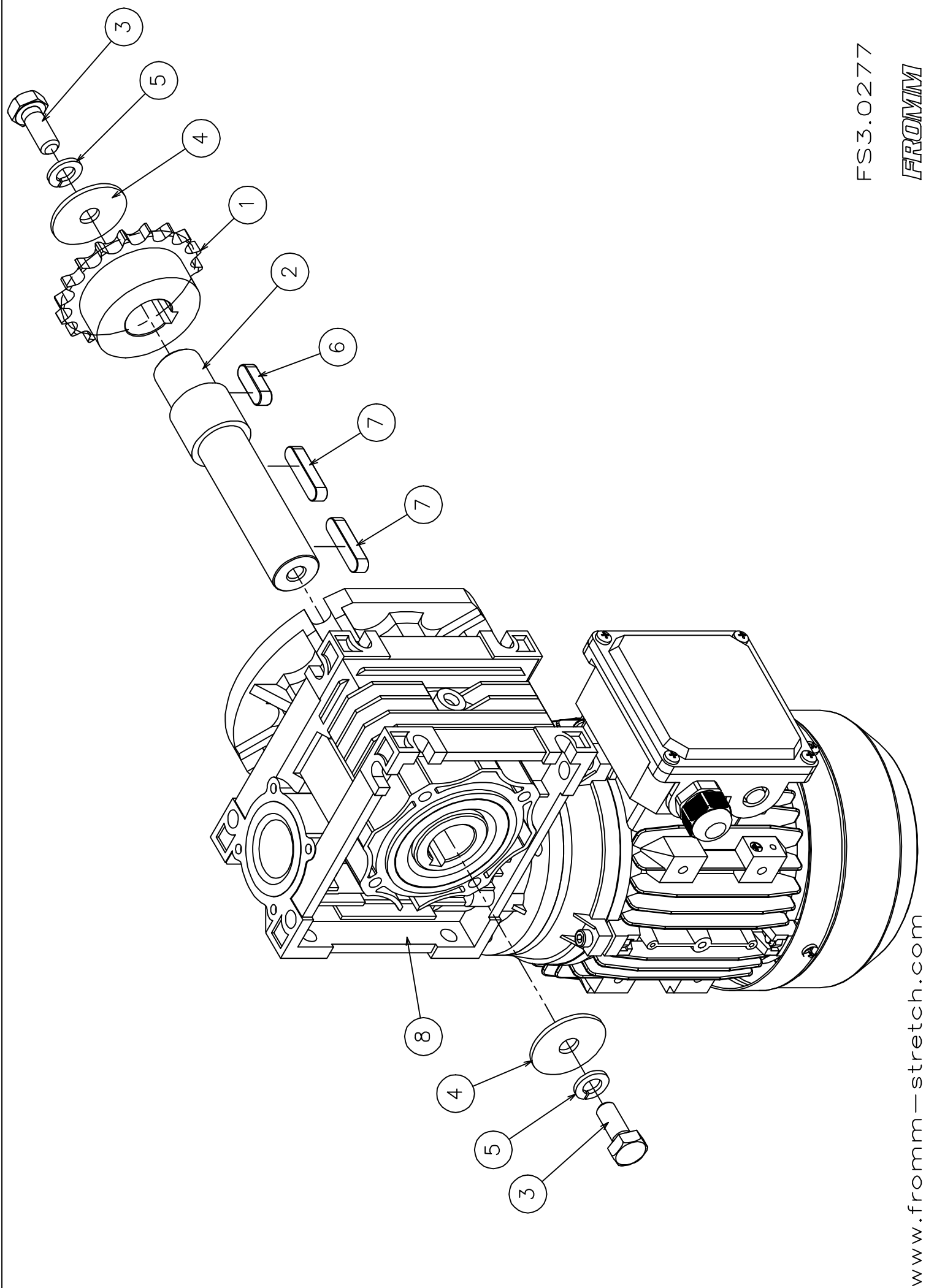
FS3.0264

FROMM

www.fromm-stretch.com

FS3.0264G Arm Toppress

| Part no. | RIF | Description | Specification English | Q.ty |
|-----------|-----|--------------|--|------|
| FS3.1195 | 1 | Flange | FLANGE | 1 |
| FS3.2630G | 2 | Tube | TUBE YELLOW RAL 1021 | 1 |
| FS3.2632 | 3 | Shaft | SHAFT | 1 |
| FS3.2635Z | 4 | Bracket | ADJUSTABLE BRACKET ZINCED | 1 |
| FS3.2636Z | 5 | Disk | DISK ZINCED | 4 |
| FS3.2637Z | 6 | Bracket | BRACKET ZINCED | 1 |
| FS3.2659G | 7 | Tube | TUBE YELLOW RAL 1021 | 1 |
| FS3.2716G | 8 | Support | SUPPORT FOR PHOTOCCELL YELLOW RAL 1021 | 1 |
| N1.1517 | 9 | Bolt | HEXAGON HEAD SCREW DIN 933 - M8 x 50 | 1 |
| N1.1556 | 10 | Screw | HEXAGON HEAD SCREW M4x12 ZINCED UNI 5739 | 8 |
| N1.1597 | 11 | Bolt | HEXAGON HEAD SCREW DIN 933 - M12 x 60 | 1 |
| N1.1914 | 12 | Screw | CYLINDRICAL HEAD CAP SCREWS DIN 7985 M3 x 16 | 2 |
| N1.3221 | 13 | Bolt | BOLT M8x16 DIN 914 GLVANIZED | 3 |
| N1.5134 | 14 | Nut | NUT M12 INOZ | 1 |
| N1.6115 | 15 | Washer | PLAIN WASHER DIN 125 - M4 | 8 |
| N1.6190 | 16 | Washer | PLAIN WASHER DIN 125 - M3 | 2 |
| N1.6214 | 17 | Washer | SPRING LOCK WASHER DIN 127 -B- M12 | 1 |
| N1.6215 | 18 | Washer | SPRING LOCK WASHER DIN 127 -B- M8 | 1 |
| N1.6219 | 19 | Washer | SPRING LOCK WASHER DIN 127 -B- M4 | 8 |
| N1.6318 | 20 | Washer | WASHER TYPE "SS" D.12X18X1,2 DIN 988 | 6 |
| N1.6334 | 21 | Washer | WASHER TYPE "PS" D.25X35X1,5 DIN 988 | 2 |
| N1.7336 | 22 | Screw | HEAD PIN SCREW D.3.5 L=10 IRON C15 | 1 |
| N2.5289 | 23 | Spring | SPRING | 2 |
| N3.1106 | 24 | Ball bearing | BALLBEARING 12 x 28 x 8 | 2 |
| N3.3184 | 25 | Bush | BUSH | 1 |
| N3.3187 | 26 | Bush | BUSH 25x28x21,5 | 1 |
| N3.4703 | 27 | Ball bearing | BALLBEARING 25x42x11 | 1 |
| N4.4305 | 28 | Joint | JOINT | 1 |



FS3.0277

FROMM

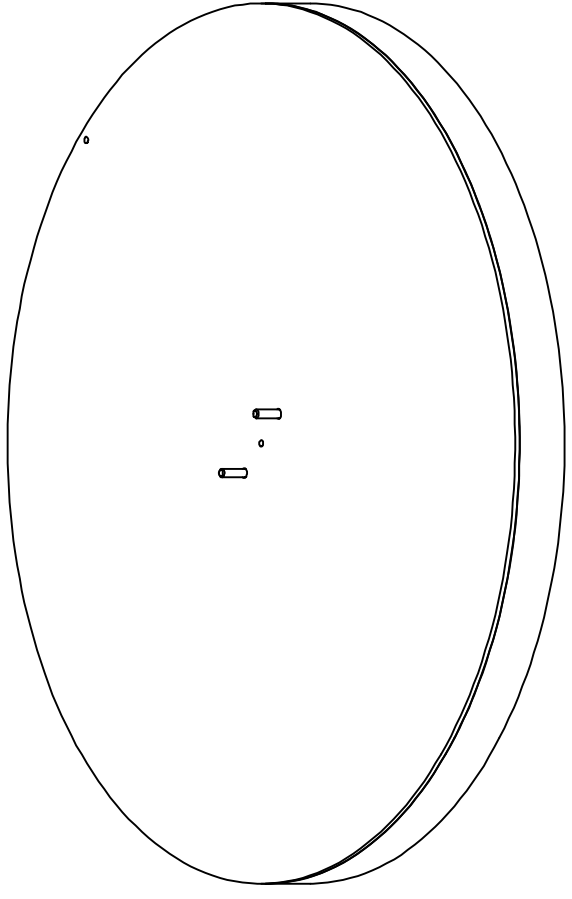
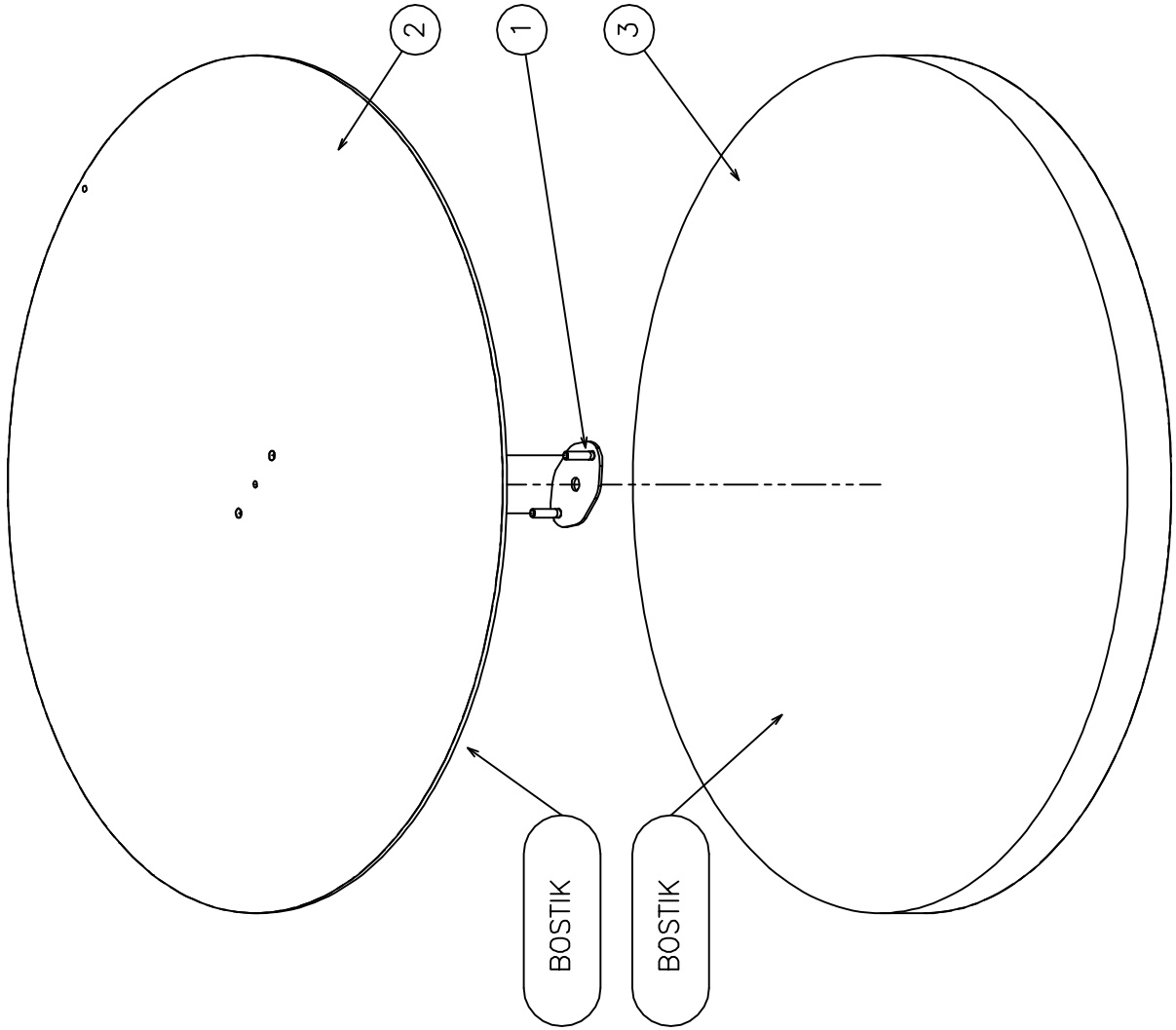
www.fromm-stretch.com

Verdrahtung
nach Zeichnung

Zeichnung: 2004
für die Montage

FS3.0277 Group motorgear Toppres

| Part no. | RIF | Description | Specification English | Q.ty |
|-----------------|------------|--------------------|---------------------------------------|-------------|
| FS3.2591 | 1 | Pinion | PINION | 1 |
| FS3.2592 | 2 | Shaft | SHAFT | 1 |
| N1.1546 | 3 | Bolt | HEXAGON HEAD SCREW DIN 933 - M10 x 25 | 2 |
| N1.6196 | 4 | Washer | WASHER M10 - 10.5x40x2.5 | 2 |
| N1.6216 | 5 | Washer | SPRING LOCK WASHER DIN 127 -B- M10 | 2 |
| N2.3314 | 6 | Key | PARALLEL KEY DIN 6885 - A 8 x 7 x 25 | 1 |
| N2.3355 | 7 | Key | PARALLEL KEY DIN 6885 - A 8 x 7 x 35 | 2 |
| N51.1136 | 8 | Motor+gear | MOTOR+GEAR | 1 |



Verlangen:
Kochtechnik

Zeichnung: 2014
10.01.2014

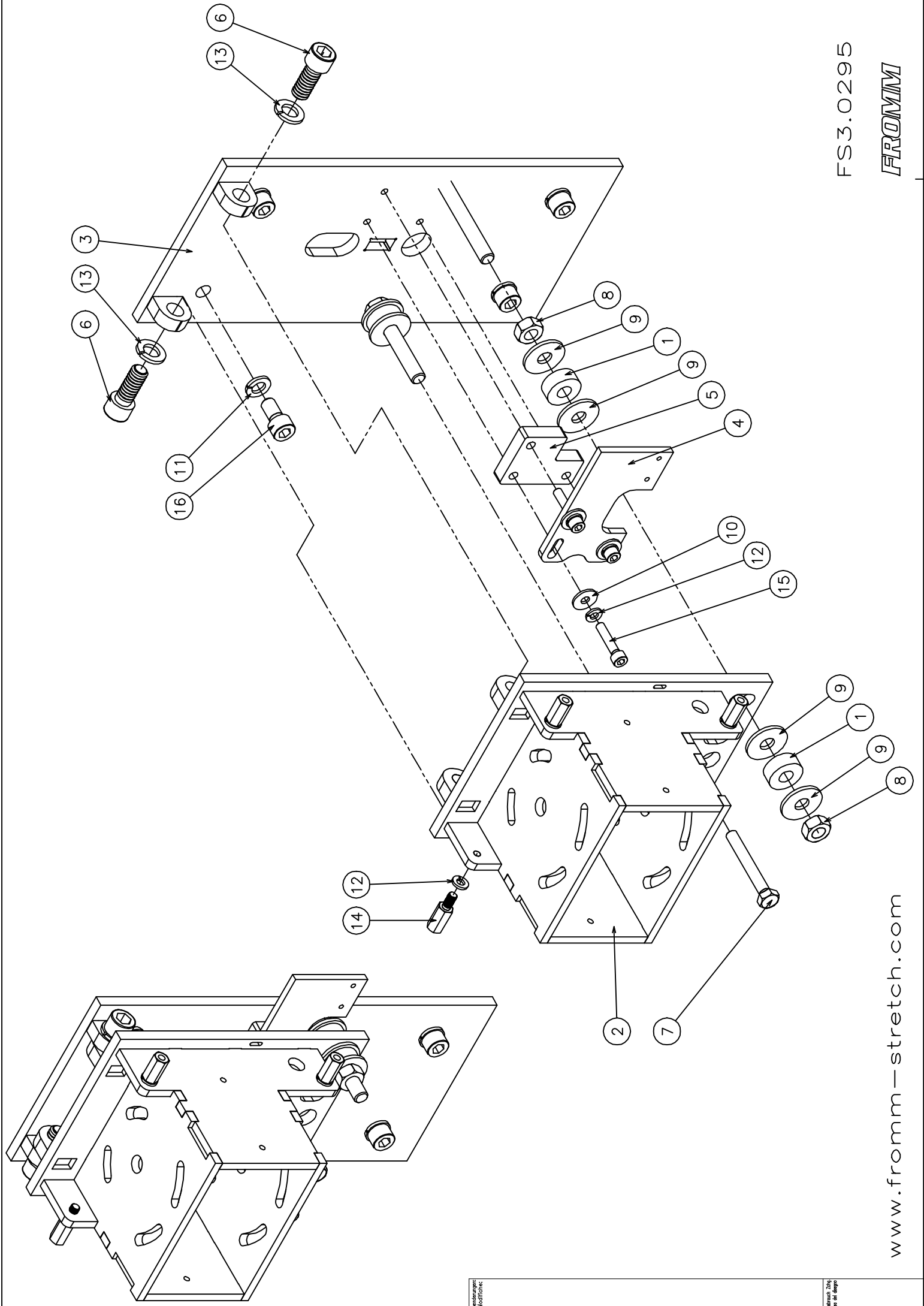
FS3.0278

FROMM

www.fromm-stretch.com

FS3.0278 Complete disk Toppress

| Part no. | RIF | Description | Specification English | Q.ty |
|-----------------|------------|--------------------|------------------------------|-------------|
| FS3.2645Z | 1 | Plate | PLATE ZINCED | 1 |
| FS3.2719 | 2 | Topplate | TOPPLATE | 1 |
| FS4.1736 | 3 | Sponge | SPONGE | 1 |



FS3.0295

FROMM

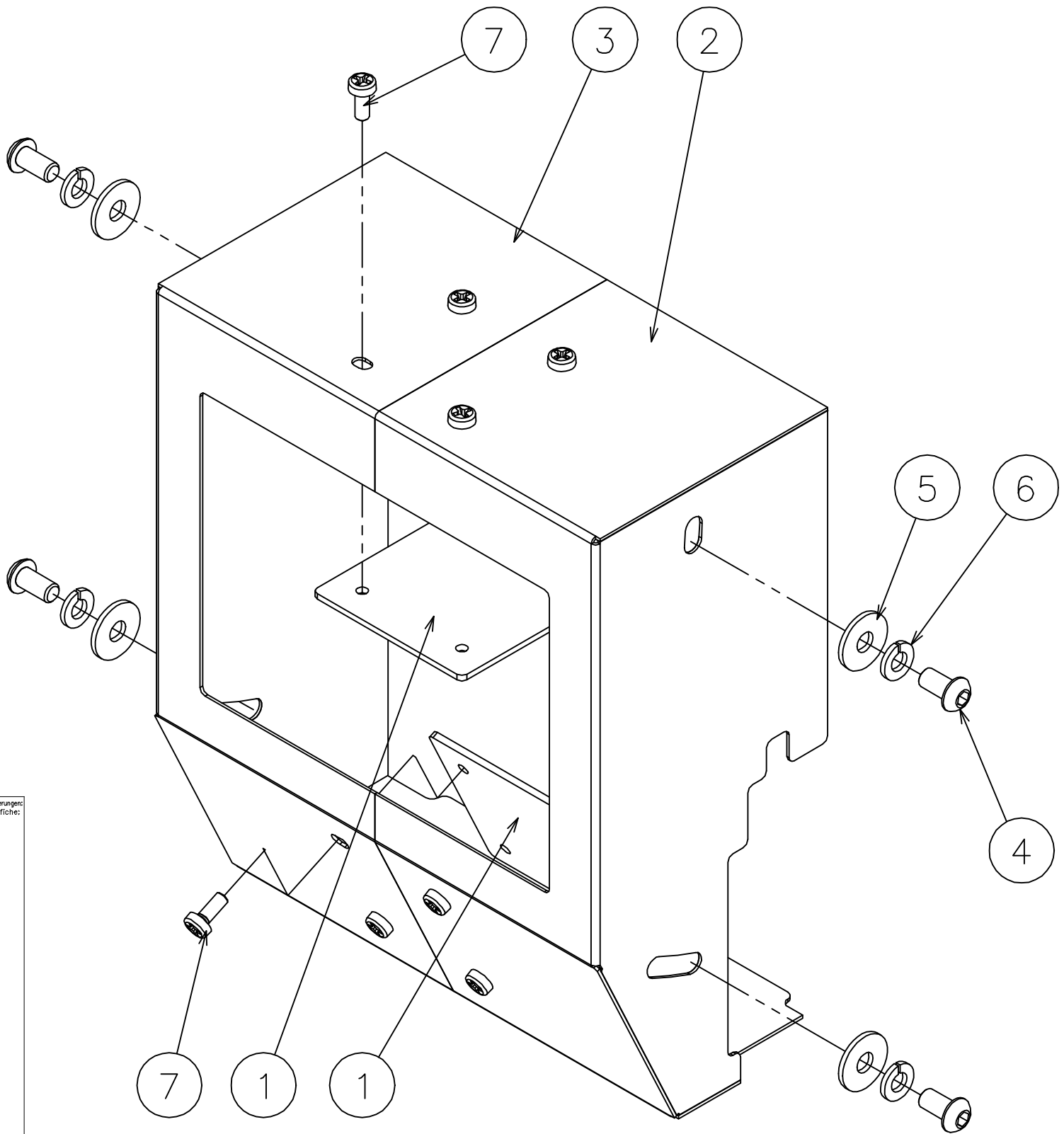
www.fromm-stretch.com

Reparaturanleitung
Produktreihe FS

© 2014 Fromm
Alle Rechte vorbehalten

FS3.0295 Group carriage Toppres

| Part no. | RIF | Description | Specification English | Q.ty |
|-----------------|------------|--------------------|--|-------------|
| FS3.2643 | 1 | Spring | SPRING | 4 |
| FS3.2767Z | 2 | Bracket | BRACKET ZINCED | 1 |
| FS3.2768Z | 3 | Plate | PLATE ZINCED | 1 |
| FS3.2770Z | 4 | Bracket | BRACKET ZINCED | 1 |
| FS3.2771Z | 5 | Distance pie. | DISTANCE PIECE FOR MICRO ZINCED | 1 |
| N1.1137 | 6 | Screw | CYLINDRICAL HEAD CAP SCREWS DIN 912 M12 x 30 | 2 |
| N1.1576 | 7 | Screw | HEXAGON HEAD SCREW DIN 933 CL 8.8 M8 X 60 | 1 |
| N1.5108 | 8 | Nut | NUT DIN 934 - M10 | 4 |
| N1.6130 | 9 | Washer | PLAIN WASHER M5 DIN 433 | 8 |
| N1.6131 | 10 | Washer | PLAIN WASHER M6 6,4x18x1,6 DIN 9021B | 3 |
| N1.6201 | 11 | Washer | SPRING LOCK WASHER DIN 127 -B- M10 | 4 |
| N1.6204 | 12 | Washer | SPRING LOCK WASHER DIN 127 -B- M6 | 7 |
| N1.6214 | 13 | Washer | SPRING LOCK WASHER DIN 127 -B- M12 | 2 |
| N5.3838 | 14 | Distance pie. | DISTANCE PIECE M6 L=20MM | 4 |
| N11.1123 | 15 | Screw | CYLINDRICAL HEAD CAP SCREWS DIN 912 M6 x 30 | 3 |
| N12.1125 | 16 | Screw | CYLINDRICAL HEAD CAP SCREWS DIN 912 M10 x 20 | 4 |



Anderungen:
Modifiche:

Petrucci Zing
Uso del disegno

FS3.0299G Group carter Toppress

| Part no. | RIF | Description | Specification English | Q.ty |
|-----------------|------------|--------------------|---|-------------|
| FS3.2772G | 1 | Plate | PLATE YELLOW RAL 1021 | 2 |
| FS3.2773G | 2 | Bracket | CARTER YELLOW RAL 1021 | 1 |
| FS3.2774G | 3 | Bracket | CARTER YELLOW RAL 1021 | 1 |
| N1.1219 | 4 | Screw | BUTTON HEAD SCREW ISO 7380 - M6 x 12 ZINCED | 4 |
| N1.6131 | 5 | Washer | PLAIN WASHER M6 6,4x18x1,6 DIN 9021B | 4 |
| N1.6204 | 6 | Washer | SPRING LOCK WASHER DIN 127 -B- M6 | 4 |
| N1.7333 | 7 | Screw | CYLINDRICAL HEAD SCREW UNI 8112 - M4 x 10 | 8 |