

FROMM

ASSEMBLY INSTRUCTIONS
and SPREPART LIST

Stretch Wrapping machine's
FS390 Carriage 2 motors
Toppres Art. FS3.2797

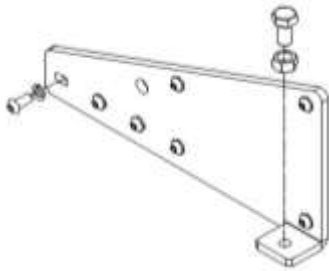
Version 01 Machines
List Rev03

Website : www.fromm-stretch.com

Assembly Instructions and Sparpepart list FS390.V01.EN03/© 03/16

Assembly Instruction Toppress FS390

Lift up the mast and fix it to the base with the bracket using screw and nut.



Not fixed completely the screws but only the necessary because the mast does not fall (**pay attention**).

Fig.1



Fig.2

Remove yellow



Fig.3

Inserting the arm in the bracket (for movement toppress) and adjustment. Necessary that the center of the disc of the top-press is perfectly in line with the center of the disc of the table. To do this you must use the instrument rope / lead. After this fixed with the screws N11.1143 (page 14 rif.59 saprepart list following).



Fig.4

To connection the wires looks next page of electrical scheme (ELS.1114) "yellow and green remark".

Place a pallet on the disc and go down in the manual function with the toppress until it clicks into limit switch proximity.



Fig.5

Fix all the screws and washers between base and mast.

Attention: to fix completely machine to the ground using the bracket supply.

Pressure on the pallet:

Screws completely down (40 Kg)

Screws completely up (55 Kg).



Fig.7

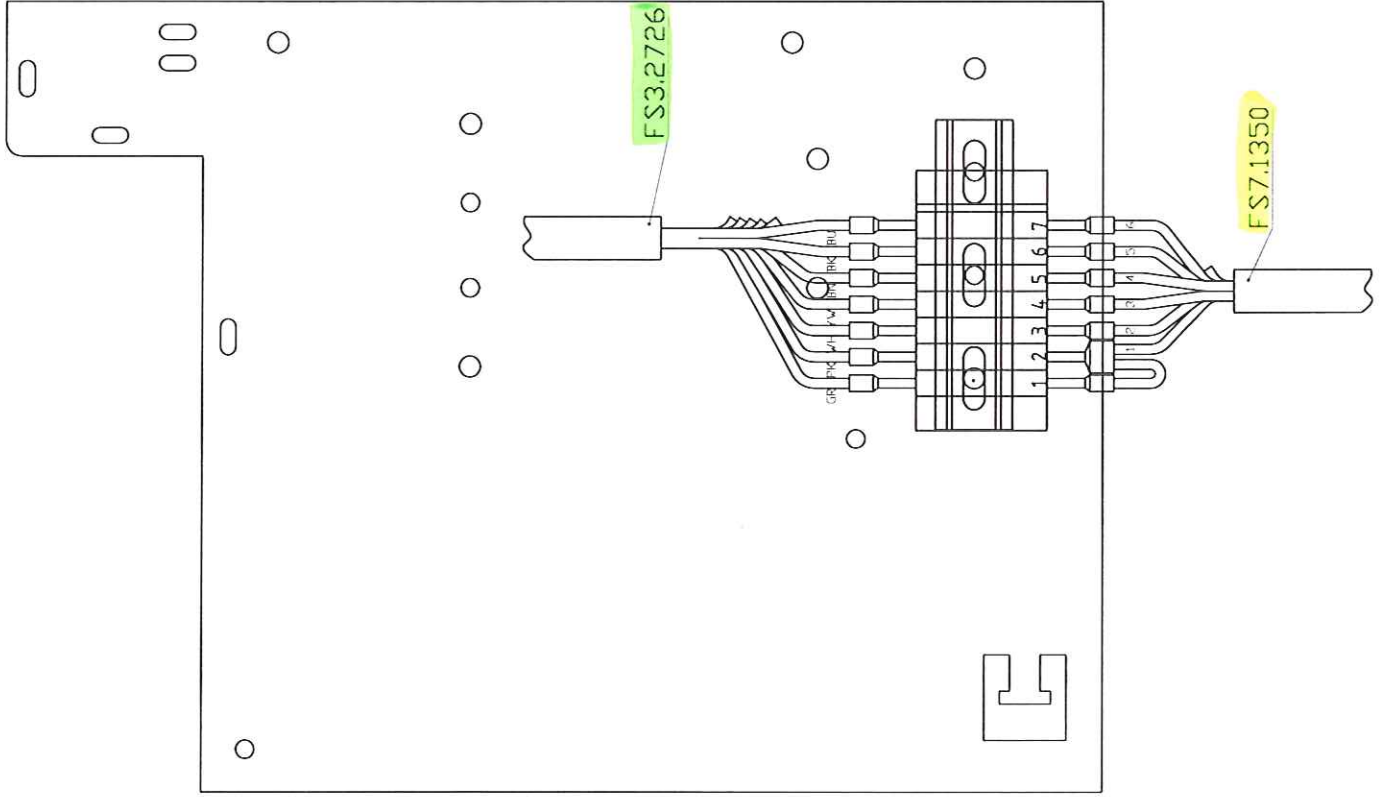


Fig.8 (Test done w/scales).

Anderungen:
Modifiche:

1 1 1

Gebrauch, Zeichn.
Uso del disegno



BN = MARRONE = BRAUN = BROWN = MARRON
 WH = BIANCO = WEISS = WHITE = BLANC
 BU = BLU = BLAU = BLUE = BLEU
 BK = NERO = SCHWARZ = BLACK = NOIR
 YW = GIALLO = GELB = YELLOW = JUANE
 GR = GRIGIO = GREY = GREY = GRIS
 PK = ROSA = ROSE = PINK = ROSE

FS7.1350-10(4x20)/10(4x20) da 0,14 a 0,28

Anderungen:
Modifiche:

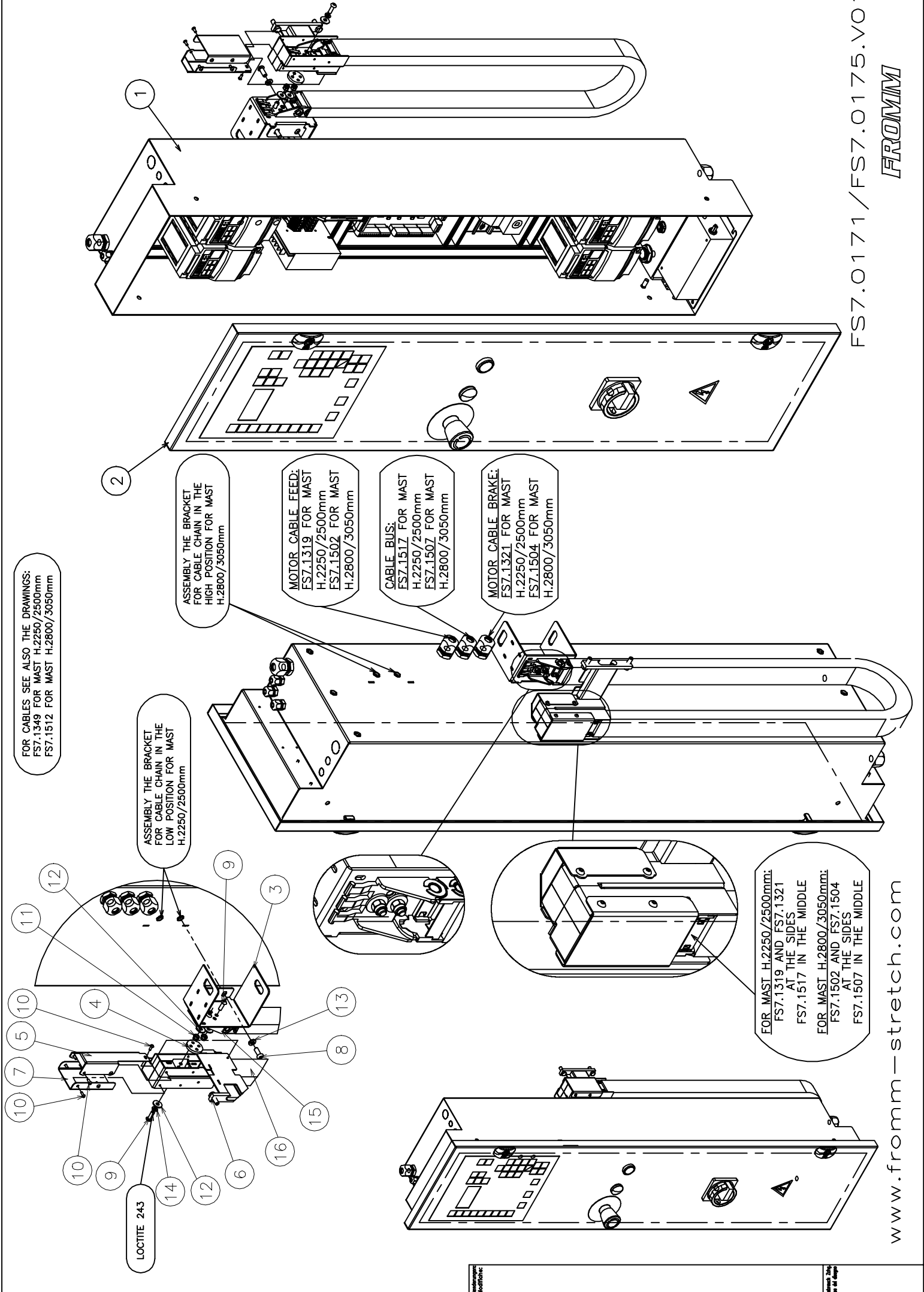


Typo: **PIASTRA TOP PRESS**
 Tipo: **FS390**

Nome Numero Questione per una parte separata	Errezt durch	S. Scianzo	
	Sostituto da	Errezt. Tur	Sostituto
Man:stab Scala	Disegnato	12/05/2015	
	Complet		
	Controllato		
	Complet		
	Verlo		

FROMM

FS7.0163



FS7.0171 / FS7.0175.VO1



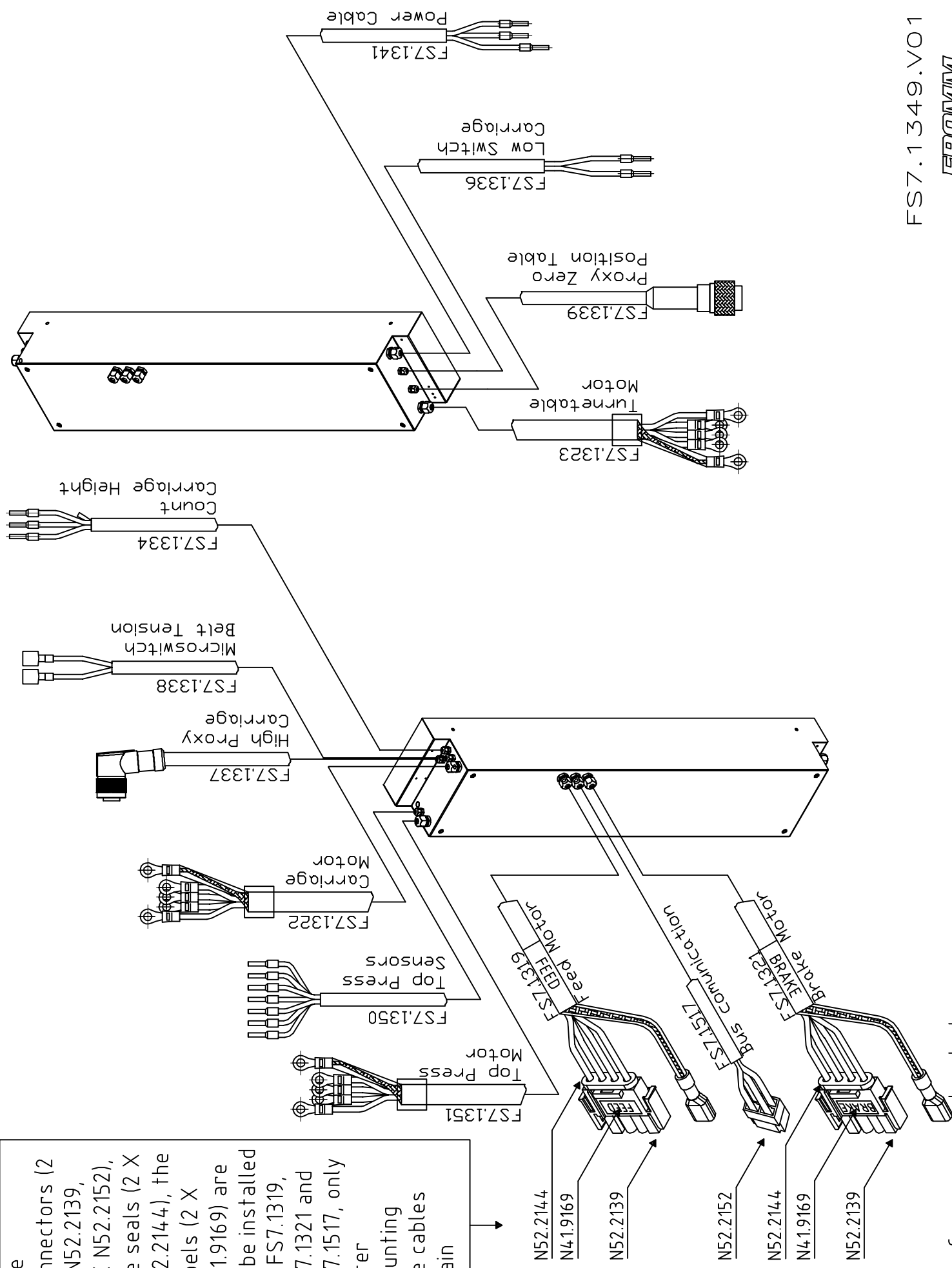
www.fromm-stretch.com

www.fromm-stretch.com

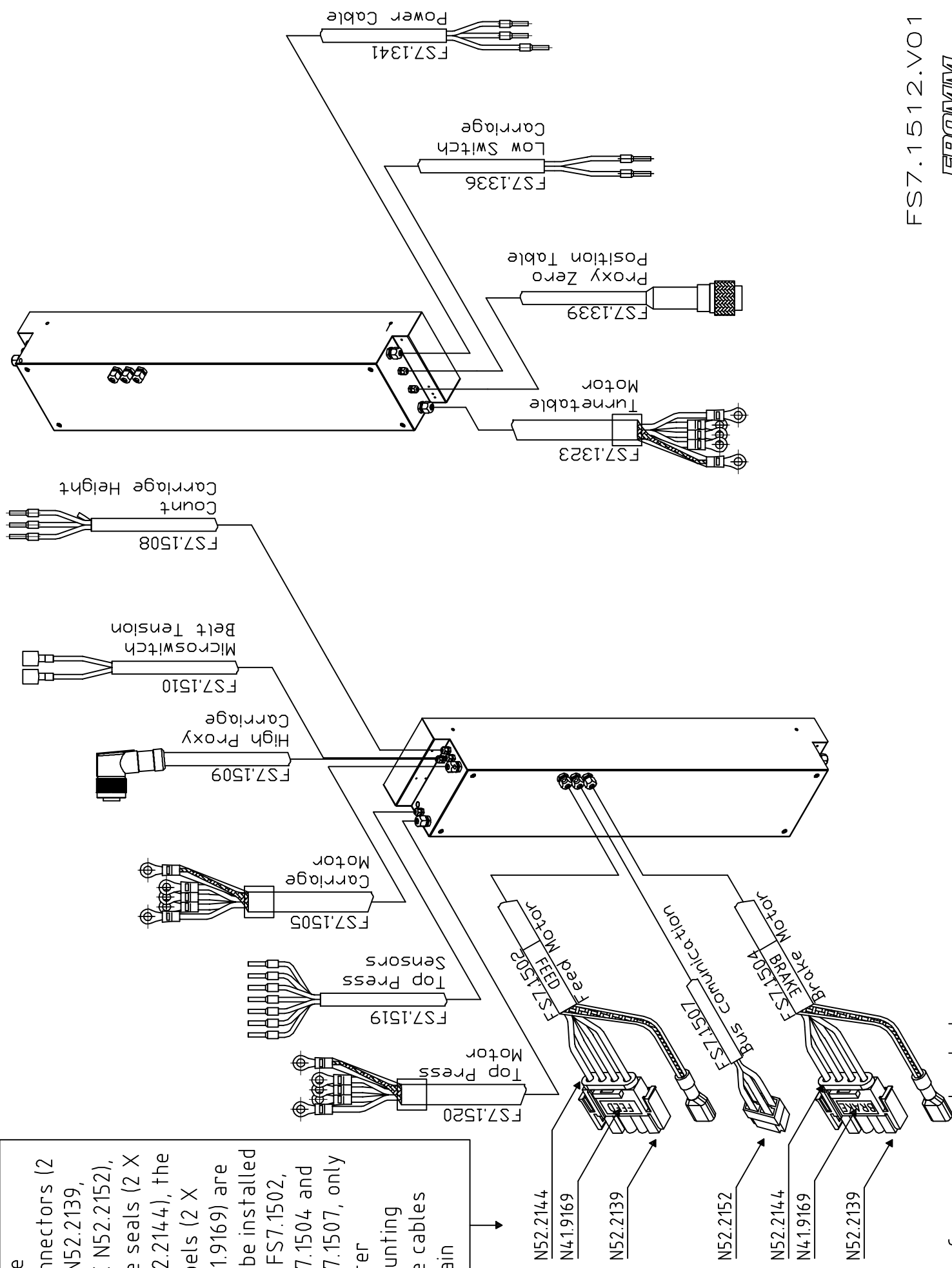
FS7.0171I_FS7.0175I Group complete electrical box with TOP-PRESS H.2250mm/H.2500mm/H.2800mm/H.3050mm

Part no.	RIF	Description	Specification English	Q.ty	Maintenance	Art. Group
FS7.0170I	1	Group	GR. ELEC. BOX TP (NEXT PAGES) MAST H.2250/2500mm	1	E	4410
FS7.0174I	2	Group	GR. ELEC. BOX TP (NEXT PAGES) MAST H.2800/3050mm	1	E	4410
FS7.0149I	2	Group	GROUP COMPLETE DOOR (NEXT PAGES)	1	E	4410
FS7.1207Z	3	Bracket	BRACKET FOR CABLE CHAIN ZINCED	1		4402
FS7.1396Z	4	Bracket	FIX CABLE CHAIN ZINCED	1		4402
FS7.1397Z	5	Bracket	COVER CABLE CHAIN ZINCED	1		4402
FS7.1601Z	6	Bracket	BRACKET FOR CABLE CHAIN	1		4402
FS7.1607Z	7	Bracket	COVER CABLE CHAIN ZINCED	1		4402
N1.1220	8	Screw	BUTTON HEAD SCREW ISO 7380 - M6 x 16	2		4200
N1.1225	9	Screw	BUTTON HEAD SCREW ISO 7380 - M5 x 16 ZINCED	4		4200
N1.1227	10	Screw	BUTTON HEAD SCREW ISO 7380 - M3 x 8 ZINCED	9		4200
N1.5302	11	Nut	NUT DIN 985 M5 ZINCED	2		4200
N1.6125	12	Washer	PLAIN WASHER UNI 6593 D.5,3X15X1,2 GALVANIZED	4		4200
N1.6204	13	Washer	SPRING LOCK WASHER DIN 127 -B- M6	2		4200
N1.6217	14	Washer	SPRING LOCK WASHER DIN 127 -B- M5	2		4200
N5.3776	15	Support	SUPPORT FOR CABLE CHAIN	1	C	4400
N5.3777	16	Cable chain	CABLE CHAIN 66 LINKS (MAST H.2250/2500mm)	1	C	4400
N5.3778	16	Cable chain	CABLE CHAIN 80 LINKS (MAST H.2800/3050mm)	1	C	4400

The connectors (2 X N52.2139, 1 X N52.2152), the seals (2 X N52.2144), the labels (2 X N4.19169) are to be installed on FS7.1319, FS7.1321 and FS7.1517, only after mounting the cables the chain



The connectors (2 X N52.2139, 1 X N52.2152), the seals (2 X N52.2144), the labels (2 X N4.19169) are to be installed on FS7.1502, FS7.1504 and FS7.1507, only after mounting the cables the chain



FS7.1334 FOR MAST H.2250/2500mm
FS7.1508 FOR MAST H.2800/3050mm

FS7.1338 FOR MAST H.2250/2500mm
FS7.1510 FOR MAST H.2800/3050mm

FS7.1322 FOR MAST H.2250/2500mm
FS7.1505 FOR MAST H.2800/3050mm

FS7.1319 FOR MAST H.2250/2500mm
FS7.1502 FOR MAST H.2800/3050mm

FS7.1517 FOR MAST H.2250/2500mm
FS7.1507 FOR MAST H.2800/3050mm

FS7.1321 FOR MAST H.2250/2500mm
FS7.1504 FOR MAST H.2800/3050mm

REMOVE THE STEEL BEFORE ASSEMBLY

FS7.1350 FOR MAST H.2250/2500mm
FS7.1519 FOR MAST H.2800/3050mm

FS7.1351 FOR MAST H.2250/2500mm
FS7.1520 FOR MAST H.2800/3050mm

FS7.1337 FOR MAST H.2250/2500mm
FS7.1509 FOR MAST H.2800/3050mm

FS7.1373

FS7.1341

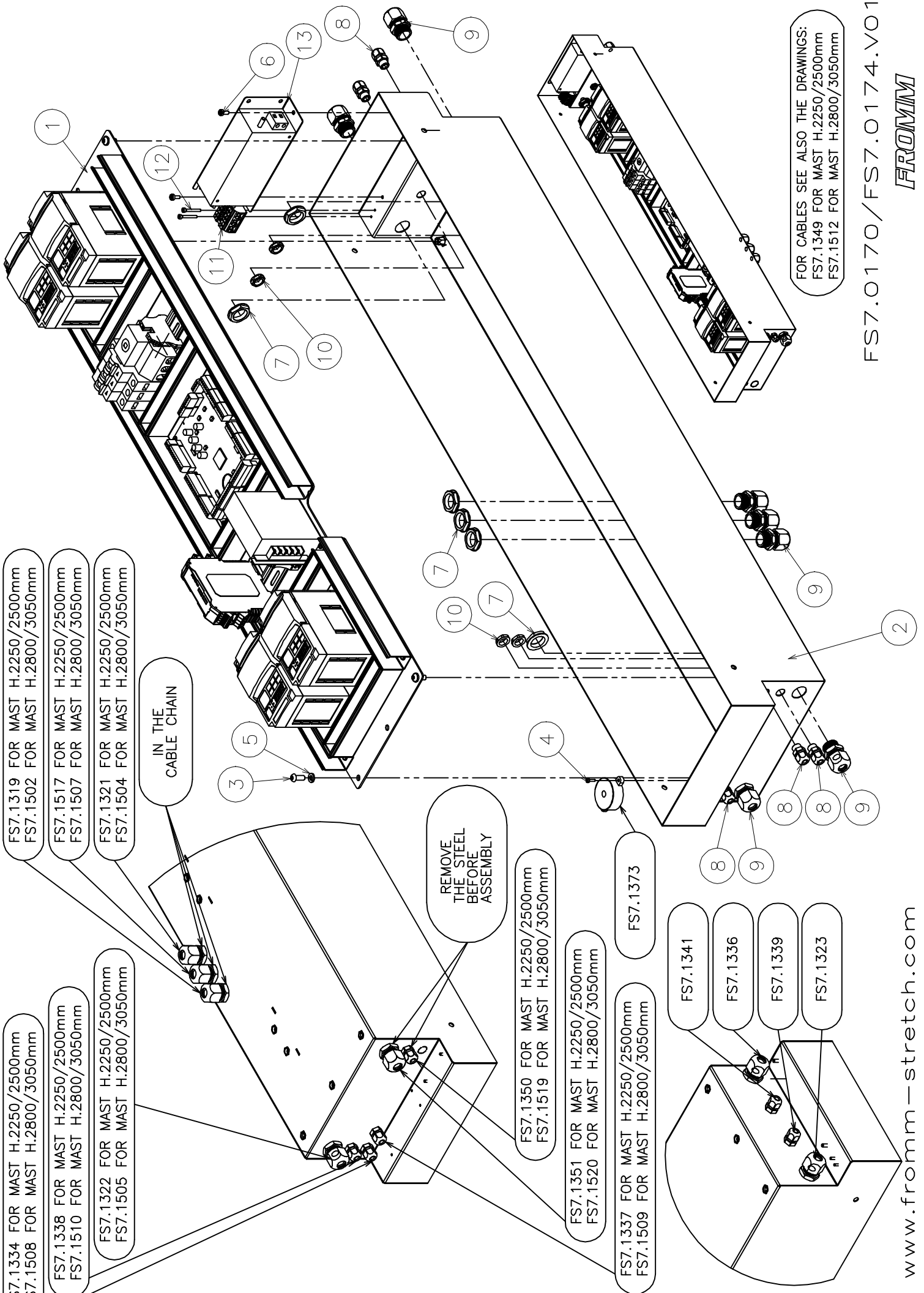
FS7.1336

FS7.1339

FS7.1323

IN THE CABLE CHAIN

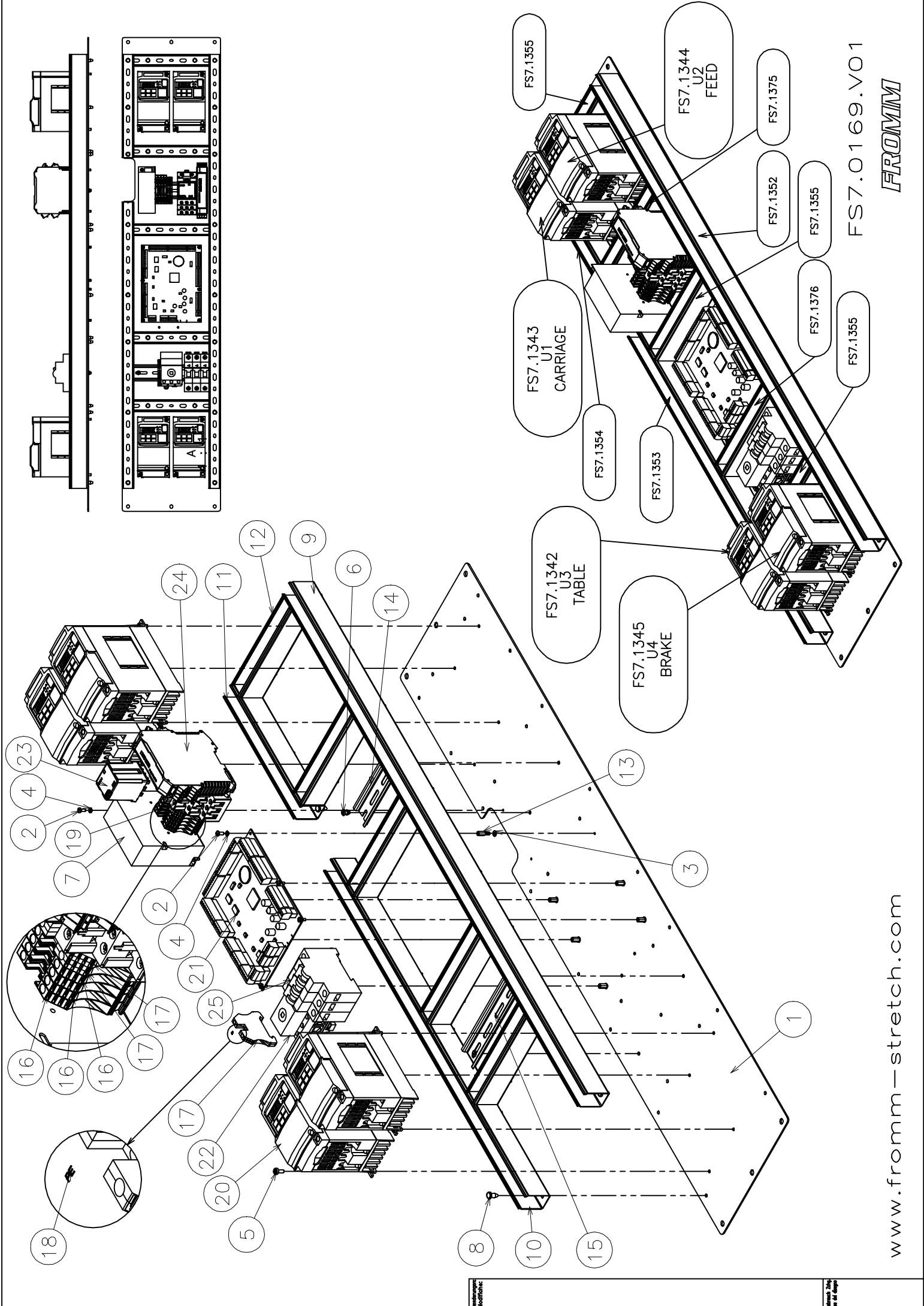
FOR CABLES SEE ALSO THE DRAWINGS:
FS7.1349 FOR MAST H.2250/2500mm
FS7.1512 FOR MAST H.2800/3050mm



FS7.0170/FS7.0174.VO1

FS7.0170I_FS7.0174I Group electrical box TOP-PRESS H.2250mm/H.2500mm/H.2800mm/H.3050mm

Part no.	RIF	Description	Specification English	Q.ty	Maintenance	Art. Group
FS7.0169	1	Group	GROUP PLATE COM. ELEC. BOX TOP-PRESS (NEXT PAG.	1	E	4410
FS7.1312	2	Box	BOX LIGHT GREY RAL7035	1		4402
N1.1220	3	Screw	BUTTON HEAD SCREW ISO 7380 - M6 x 16 ZINCED	4	B	4200
N1.1922	4	Screw	PHILIPS HEAD SCREW M3x10 ZINCED DIN 7985A	2	B	4200
N1.6204	5	Washer	SPRING LOCK WASHER DIN 127 -B- M6	4		4200
N1.7333	6	Screw	HEAD PIN SCREW M4x10 ZINCED UNI 8112	2		4200
N5.3341	7	Cablegland	LOCK NUT M20 GREY COLOR RAL 7035	7		4403
N5.3351	8	Gland	GLAND M12	6	B-C	4403
N5.3352	9	Gland	GLAND M20 D.6-12 GREY COLOR RAL 7035	7	B-C	4403
N5.3353	10	Cablegland	LOCK NUT M12 GREY COLOR	6		4403
N5.6725	11	Clamp	CLAMP	1	B	4403
N12.1117	12	Screw	CYLINDRICAL HEAD CAP SCREW M3x25 ISO 4762 GAL.	2		4200
N51.5476	13	Filter	FILTER	1		4200



FS7.O169.VO1

FROMM

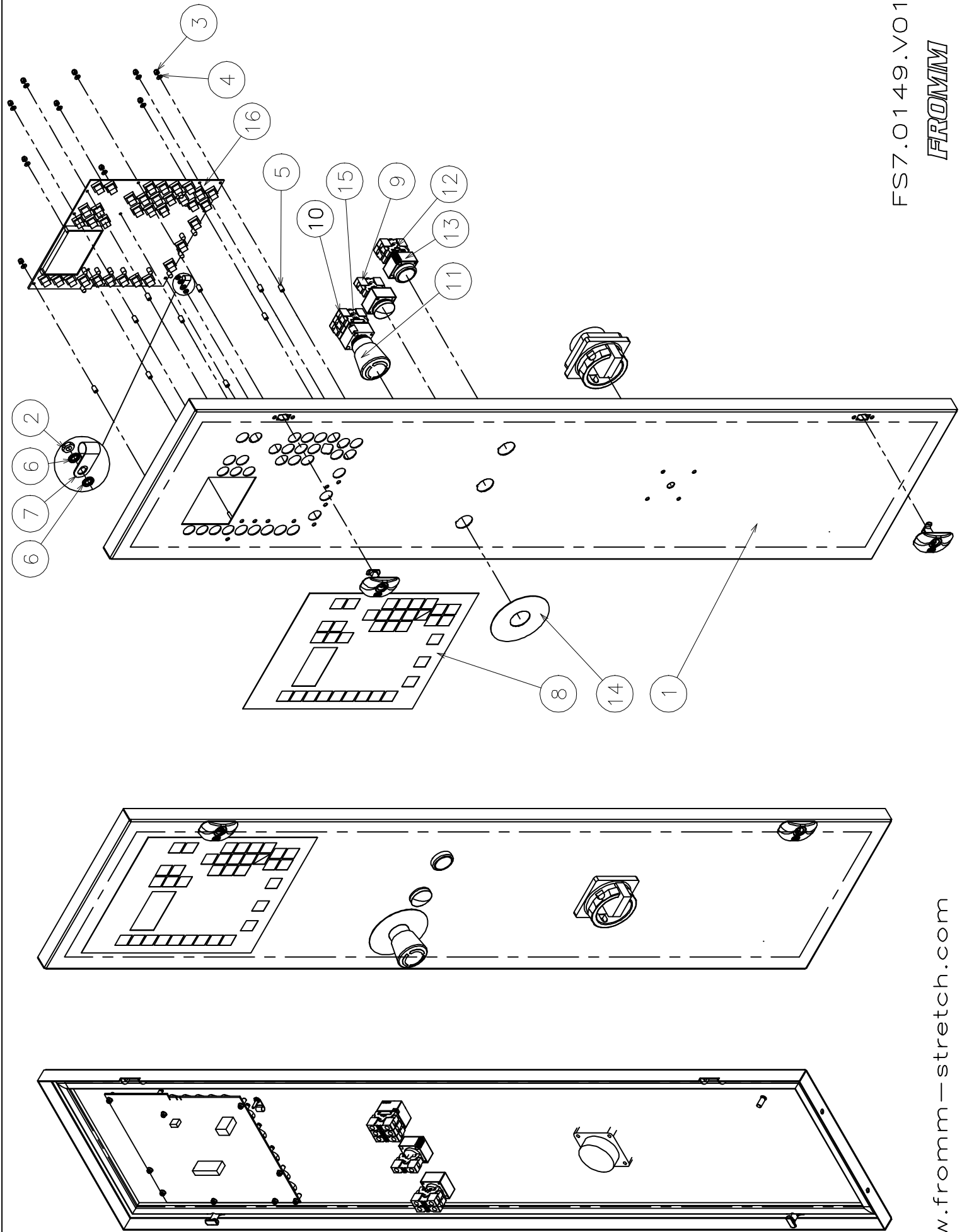
www.fromm-stretch.com

Manufactured in Germany

© 2008 FROMM

FS7.0169 Group plate complete electrical box TOP-PRESS

Part no.	RIF	Description	Specification English	Q.ty	Maintenance	Art. Group
FS7.1293Z	1	Plate	PLATE ZINCED	1		4402
N1.1932	2	Screw	PHILIPS HEAD SCREW DIN 7985A CL.4.8 M3 x 8 ZINCED	8		4200
N1.6183	3	Washer	PLAIN WASHER DIN 125A 3.2x9x0.5 ZINCED	6		4200
N1.6414	4	Washer	WASHER M3 DIN 6798 ZINCED	7		4200
N1.7333	5	Screw	HEAD PIN SCREW M4x10 ZINCED UNI 8112	8		4200
N2.4506	6	Rivet	RIVET HEXAGON HEAD 4X8 DIN 7337 A	4		4200
N5.1478	7	Transfor.	TRANSFORMATOR	1		4403
N5.3748	8	Rivet	RIVET Ø4 FOR ELECTRICAL DUCT	26		4402
N5.3751	9	Duct	ELECTRICAL DUCT L=925	1		4402
N5.3751	10	Duct	ELECTRICAL DUCT L=610	1		4402
N5.3751	11	Duct	ELECTRICAL DUCT L=220	1		4402
N5.3751	12	Duct	ELECTRICAL DUCT L=160	5		4402
N5.3831	13	Distan. Piece	DISTANCE PIECE M3x10	6		4402
N5.6113	14	Bar	BAR	1		4402
N5.6113	15	Bar	BAR	1		4402
N5.6114	16	Clamp	CLAMP	4		4403
N5.6115	17	Clamp	GROUND CLAMP	3		4403
N5.6417	18	Label	PE LABEL	1		4405
N51.5237	19	Base relè	BASE RELE'	1		4403
FS7.1342	20	Inverter	INVERTER U3 TABLE (WITH PROGRAM)	1	E	4403
FS7.1343	20	Inverter	INVERTER U1 CARRIAGE (WITH PROGRAM)	1	E	4403
FS7.1344	20	Inverter	INVERTER U2 FEED (WITH PROGRAM)	1	E	4403
FS7.1345	20	Inverter	INVERTER U4 BRAKE (WITH PROGRAM)	1	E	4403
N51.7199	21	Mainboard	MAINBOARD FS390	1	E	4403
N52.2249	22	Block	INTERLOCKED MAIN SWITCH	1	E	4403
N52.5285	23	Relé	RELE' 3 CON. 24VDC	1	E	4403
N52.5296	24	Module	SECURITY MODULE	1	E	4403
N52.5297	25	Switch	THERMAL OVERCURRENT CIRCUIT BREAKERS	3	E	4403



FS7.01 49.V01

FROMM

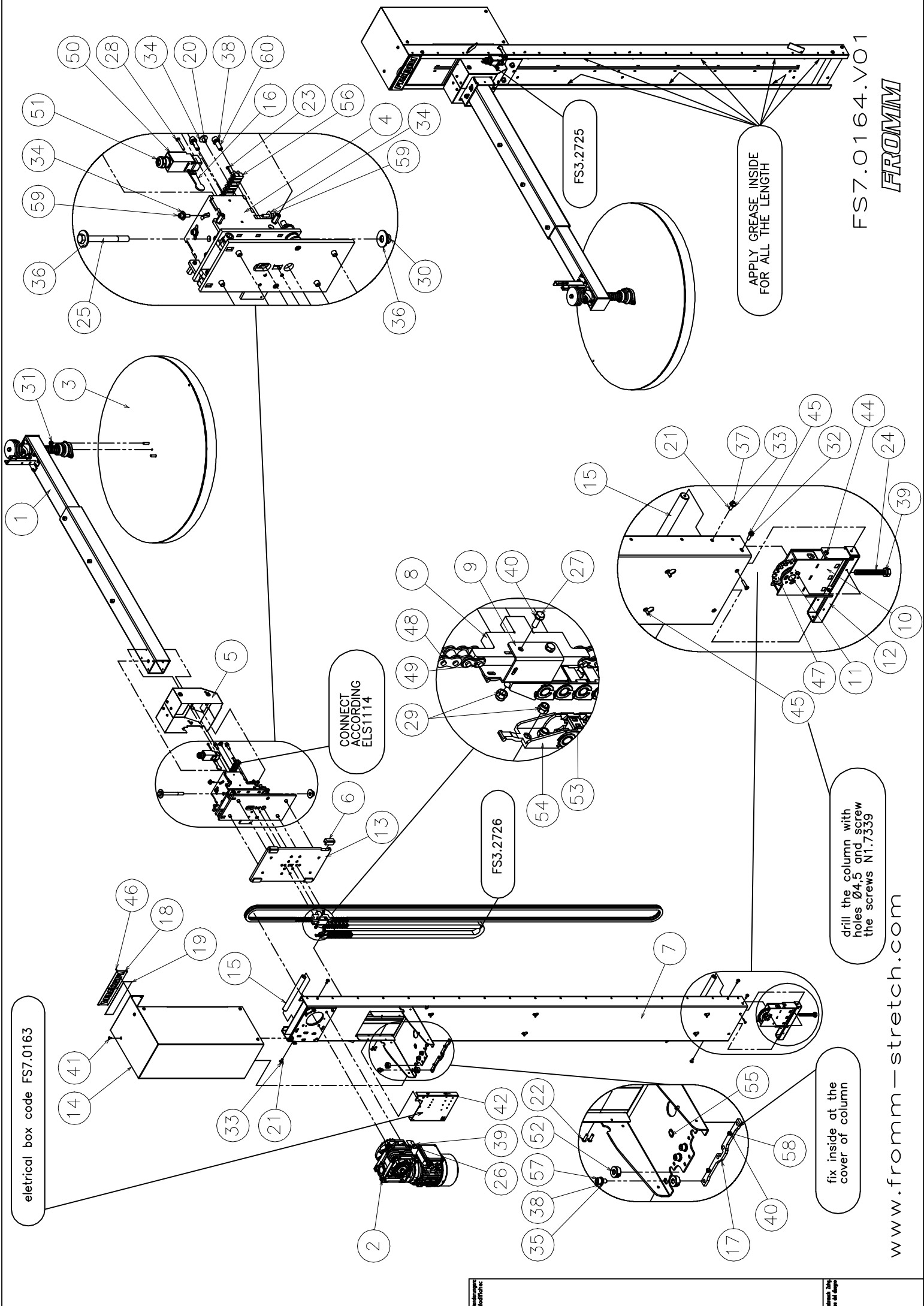
www.fromm-stretch.com

© 2014 FROMM

Alle Rechte vorbehalten

FS7.0149I Group complete door

Part no.	RIF	Description	Specification English	Q.ty	Maintenance	Art. Group
FS7.1310I	1	Door	DOOR LIGHT GREY RAL7035	1	A	4402
N1.5120	2	Nut	NUT M3 DIN934 GALVANIZED	1		4200
N1.5313	3	Nut	STAINLESS NYLON INSERT LOCK NUT M3 DIN 985	10		4200
N1.6190	4	Washer	WASHER M3 NYLON DIN125 Di=3,2 De=7 sp=0,5	10		4200
N1.6388	5	Distan. Piece	DISTANCE PIECE Ø3.2xØ5 L=8	10		4200
N1.6414	6	Washer	PLAIN WASHER M3 DIN 6798 A ZINCED	2		4200
N5.3662	7	Elastic Strip	ELASTIC STRIP FOR CABLES	1		4403
N44.9171	8	Label	LABEL PANEL FS390	1	A-C-E	4401
N52.2250	9	Indicato light	INDICATOR LIGHT WITH SMOOTH LENS WHITE	1	C-E	4403
N52.2251	10	Contact	AUXILIARY CONTACT	3	C-E	4403
N52.2252	11	Emer.-stop	EMERGENCY-STOP MUSHROOM	1	C-E	4403
N52.2268	12	Contact	AUXILIARY CONTACT	2	C-E	4403
N52.2285	13	Button	HEAD BLU BUTTON RE-ARM	1	C-E	4403
N52.2286	14	Label	LABEL YELLOW DISK EMERGENCY BUTTON	1	C	4405
N52.2287	15	Support	SUPPORT (3 WAYS)	1	C-E	4403
N52.7101	16	Pc-Board	PC-BOARD FS390	1	E	4403



electrical box code FS7.0163

CONNECT ACCORDING ELS114

FS3.2726

drill the column with holes Ø4.5 and screw the screws N1.7339

fix inside at the cover of column

APPLY GREASE INSIDE FOR ALL THE LENGTH

FS3.2725

FS7.0164.VO1

FROMM

www.fromm-stretch.com

www.fromm-stretch.com

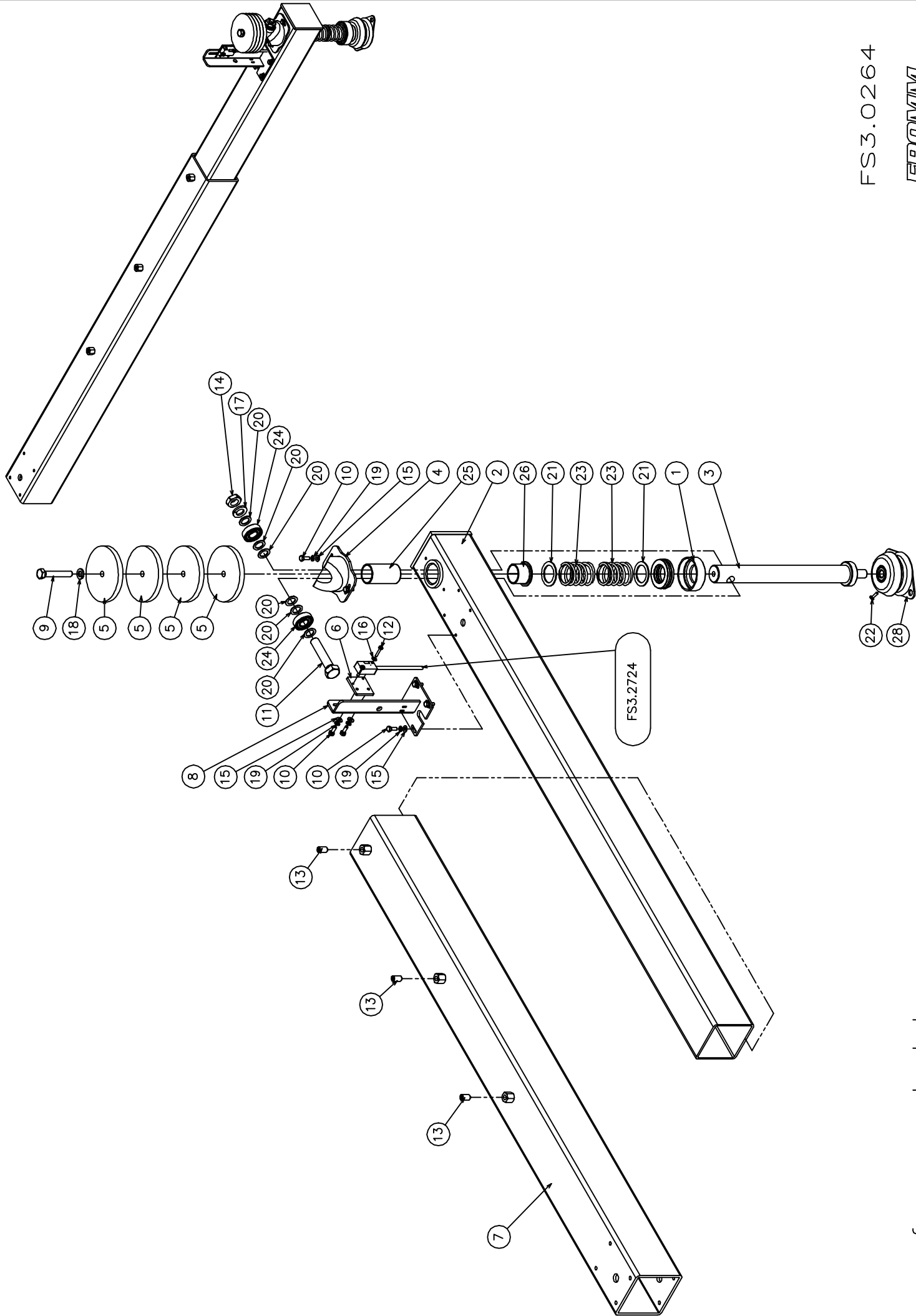
www.fromm-stretch.com

FS7.0164GB Top-plate FS390

Part no.	RIF	Description	Specification English	Q.ty
FS3.0264G	1	Arm	ARM YELLOW RAL 1021	1
FS3.0277	2	Group	GROUP MOTORGear	1
FS3.0278	3	Disk	COMPLETE DISK	1
FS3.0295	4	Group	GROUP CARRIAGE	1
FS3.0299G	5	Group	GROUP CARTER YELLOW RAL 1021	1
FS3.2120	6	Polizene	POLIZENE FOR PLATE CARRIAGE	4
FS3.2595B	7	Mast	MAST BLUE RAL 5010	1
FS3.2596Z	8	Plate	PLATE FOR CABLE CHAIN ZINCED	1
FS3.2597Z	9	Bracket	BRACKET ZINCED	1
FS3.2603Z	10	Tensioner	TENSIONER FOR CHAIN ZINCED	1
FS3.2610	11	Shaft	SHAFT	1
FS3.2613Z	12	Carter	CARTER ZINCED	1
FS3.2650Z	13	Plate	PLATE SLIDING CARRIAGE IN THE COLUMN ZINCED	1
FS3.2652B	14	Carter	CARTER BLUE RAL 5010	1
FS3.2653	15	Block	MECHANICAL BLOCK	2
FS3.2717Z	16	Lever	LEVER FOR MICROSWITCH ZINCED	1
FS3.2722Z	17	Plate	PLATE ZINCED	1
FS4.1516	18	Label	LABEL BRAND FROMM	1
FS4.1521	19	Sticker	RED STICKER PVC	1
N1.1219	20	Screw	BUTTON HEAD SCREW ISO 7380 - M6 x 12 ZINCED	1
N1.1220	21	Screw	BUTTON HEAD SCREW ISO 7380 - M6 x 16	4
N1.1225	22	Screw	BUTTON HEAD SCREW ISO 7380 - M5 x 16 ZINCED	4
N1.1320	23	Bolt	PHILIPS HEAD BOLT M3x16 ZN UNI 5931	2
N1.1425	24	Bolt	HEXAGON HEAD BOLT DIN 933 - M10 x 80 ZINCED	1
N1.1510	25	Bolt	HEXAGON HEAD BOLT DIN 933 - M12 x 120 ZINCED	1
N1.1546	26	Bolt	HEXAGON HEAD BOLT DIN 933 - M10 x 25 ZINCED	4
N1.1556	27	Bolt	HEXAGON HEAD BOLT DIN 933 - M4 x 12 ZINCED	2
N1.1937	28	Bolt	PHILIPS HEAD BOLT M4x30 ZN UNI 5931	2
N1.5302	29	Nut	PREVAILING HEXAGON TORQUE / NON MET. INS. M5	4
N1.5304	30	Nut	PREVAILING HEXAGON TORQUE / NON MET. INS. M12	1
N1.5305	31	Nut	PREVAILING HEXAGON TORQUE / NON MET. INS. M8	2
N1.6103	32	Washer	PLAIN WASHER DIN 125 - 5,3 x 10	2
N1.6114	33	Washer	PLAIN WASHER DIN 125 - M6	4
N1.6131	34	Washer	PLAIN WASHER M6 6,4x18x1,6 DIN 9021B	9
N1.6164	35	Washer	PLAIN WASHER DIN 125 - M8	4
N1.6188	36	Washer	PLAIN WASHER M12 DIN 9021B	2
N1.6204	37	Washer	SPRING LOCK WASHER DIN 127 -B- M6	13
N1.6215	38	Washer	SPRING LOCK WASHER DIN 127 -B- M8	6
N1.6216	39	Washer	SPRING LOCK WASHER DIN 127 -B- M10	5
N1.6219	40	Washer	SPRING LOCK WASHER DIN 127 -B- M4	4
N1.7331	41	Screw	HEAD PIN SCREW M5x10 ZINCED UNI 8112	8
N1.7333	42	Screw	HEAD PIN SCREW M4x10 ZINCED UNI 8112	4
N1.7335	43	Screw	HEAD PIN SCREW M4x10 ZINCED UNI 8113	4
N1.7338	44	Screw	HEAD PIN SCREW M5x25 ZINCED UNI 8112	2
N1.7339	45	Screw	HEAD PIN SCREW M5x16 ZINCED UNI 8112	8

FS7.0164GB Top-plate FS390

Part no.	RIF	Description	Specification English	Q.ty
N2.4902	46	Rivet	CYLINDRICAL HEAD CAP RIVET C15 D.1,85x4,76 NICK.	6
N4.7238	47	Pinion	PINION 1/2"X5/16" Z=18 + BALL BEARING	1
N4.7375	48	Chain	CHAIN 1/2"X5/16" 377 LINKS	1
N4.7413	49	Link	LINK 1/2"X5/16"	2
N5.2355	50	Microswitch	MICROSWITCH	1
N5.3332	51	Cablegland	CABLEGLAND PG. 13.5	1
N5.3413	52	Cablegland	CABLEGLAND	2
N5.3772	53	Cable chain	CABLE CHAIN	1
N5.3773	54	Bracket	BRACKET FOR CABLE CHAIN	1
N5.3822	55	Plastic	PLASTIC FOR CABLES	1
N5.6701	56	Clamp	CLAMP	1
N11.1102	57	Bolt	CYLINDRICAL HEAD CAP SCREWS DIN 912 M8 x 16	4
N11.1115	58	Screw	CYLINDRICAL HEAD CAP SCREWS DIN 912 M4 x 8	2
N11.1143	59	Screw	CYLINDRICAL HEAD CAP SCREWS DIN 912 M6 x 20	8
N11.1173	60	Bolt	CYLINDRICAL HEAD CAP SCREWS DIN 912 M8 x 25	2



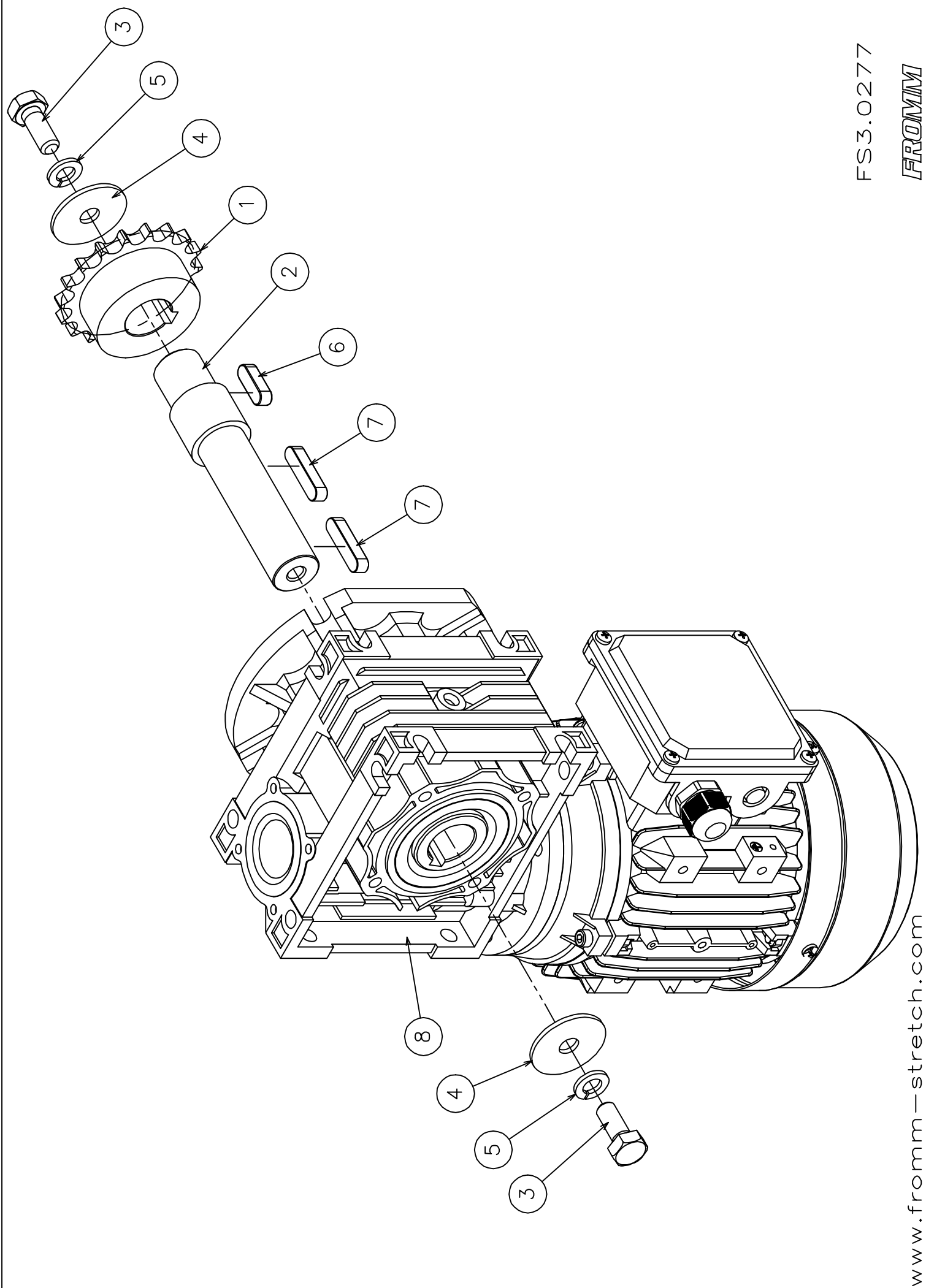
FS3.0264

FROMM

www.fromm-stretch.com

FS3.0264G Arm Toppres

Part no.	RIF	Description	Specification English	Q.ty
FS3.1195	1	Flange	FLANGE	1
FS3.2630G	2	Tube	TUBE YELLOW RAL 1021	1
FS3.2632	3	Shaft	SHAFT	1
FS3.2635Z	4	Bracket	ADJUSTABLE BRACKET ZINCED	1
FS3.2636Z	5	Disk	DISK ZINCED	4
FS3.2637Z	6	Bracket	BRACKET ZINCED	1
FS3.2659G	7	Tube	TUBE YELLOW RAL 1021	1
FS3.2716G	8	Support	SUPPORT FOR PHOTOCCELL YELLOW RAL 1021	1
N1.1517	9	Bolt	HEXAGON HEAD SCREW DIN 933 - M8 x 50	1
N1.1556	10	Screw	HEXAGON HEAD SCREW M4x12 ZINCED UNI 5739	8
N1.1597	11	Bolt	HEXAGON HEAD SCREW DIN 933 - M12 x 60	1
N1.1914	12	Screw	CYLINDRICAL HEAD CAP SCREWS DIN 7985 M3 x 16	2
N1.3221	13	Bolt	BOLT M8x16 DIN 914 GLVANIZED	3
N1.5134	14	Nut	NUT M12 INOZ	1
N1.6115	15	Washer	PLAIN WASHER DIN 125 - M4	8
N1.6190	16	Washer	PLAIN WASHER DIN 125 - M3	2
N1.6214	17	Washer	SPRING LOCK WASHER DIN 127 -B- M12	1
N1.6215	18	Washer	SPRING LOCK WASHER DIN 127 -B- M8	1
N1.6219	19	Washer	SPRING LOCK WASHER DIN 127 -B- M4	8
N1.6318	20	Washer	WASHER TYPE "SS" D.12X18X1,2 DIN 988	6
N1.6334	21	Washer	WASHER TYPE "PS" D.25X35X1,5 DIN 988	2
N1.7336	22	Screw	HEAD PIN SCREW D.3.5 L=10 IRON C15	1
N2.5289	23	Spring	SPRING	2
N3.1106	24	Ball bearing	BALLBEARING 12 x 28 x 8	2
N3.3184	25	Bush	BUSH	1
N3.3187	26	Bush	BUSH 25x28x21,5	1
N3.4703	27	Ball bearing	BALLBEARING 25x42x11	1
N4.4305	28	Joint	JOINT	1



FS3.0277

FROMM

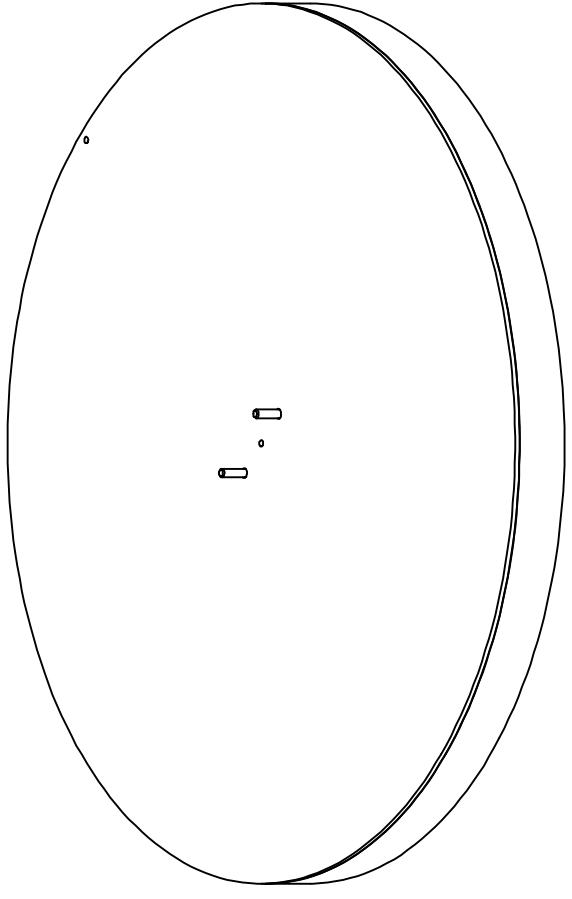
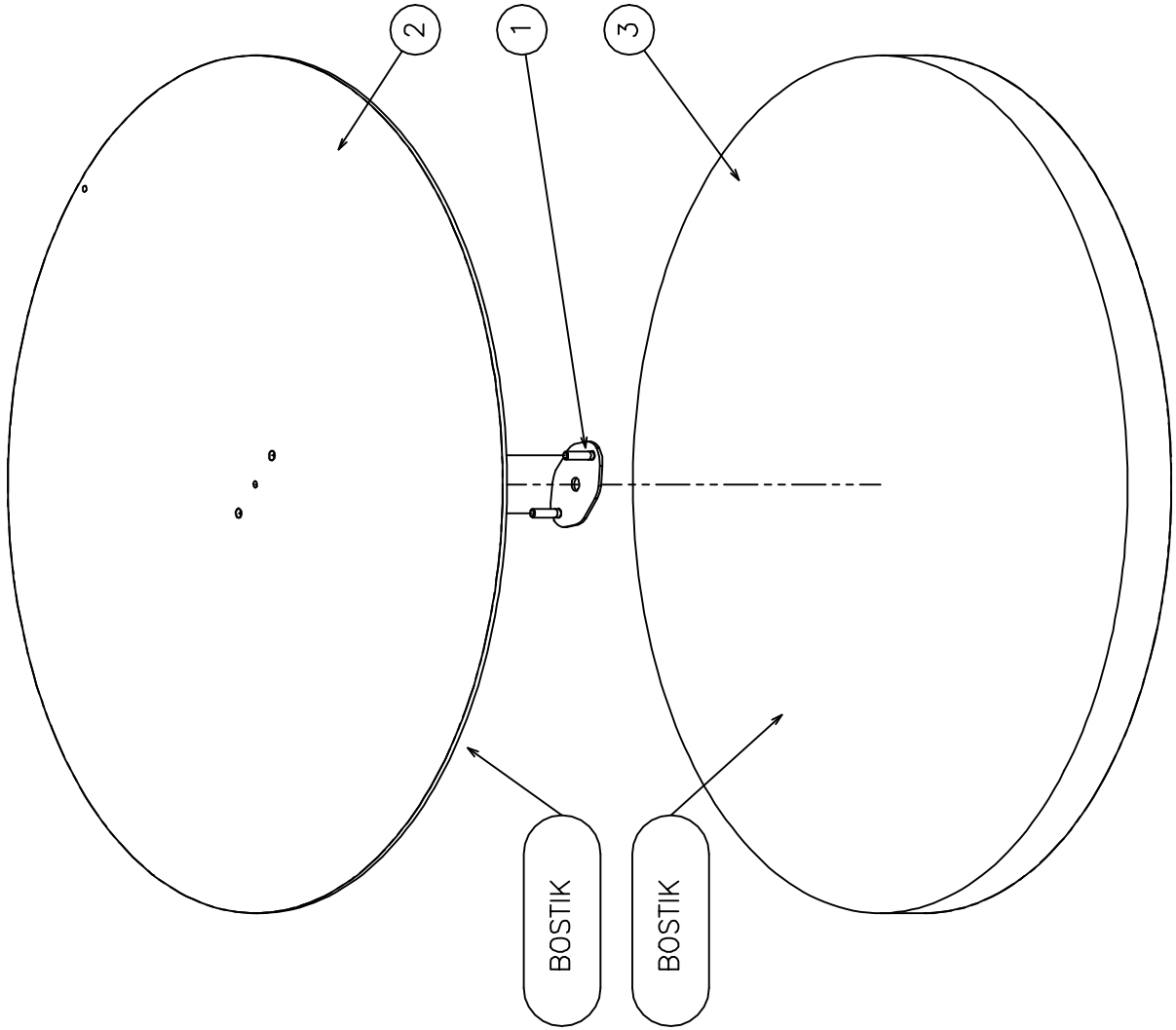
www.fromm-stretch.com

Verdrahtung:
Kabelbaum

Zeichnung: 2014
10.01.2014

FS3.0277 Group motorgear Toppres

Part no.	RIF	Description	Specification English	Q.ty
FS3.2591	1	Pinion	PINION	1
FS3.2592	2	Shaft	SHAFT	1
N1.1546	3	Bolt	HEXAGON HEAD SCREW DIN 933 - M10 x 25	2
N1.6196	4	Washer	WASHER M10 - 10.5x40x2.5	2
N1.6216	5	Washer	SPRING LOCK WASHER DIN 127 -B- M10	2
N2.3314	6	Key	PARALLEL KEY DIN 6885 - A 8 x 7 x 25	1
N2.3355	7	Key	PARALLEL KEY DIN 6885 - A 8 x 7 x 35	2
N51.1136	8	Motor+gear	MOTOR+GEAR	1



Verbinden
Verbinden

Verbinden
Verbinden

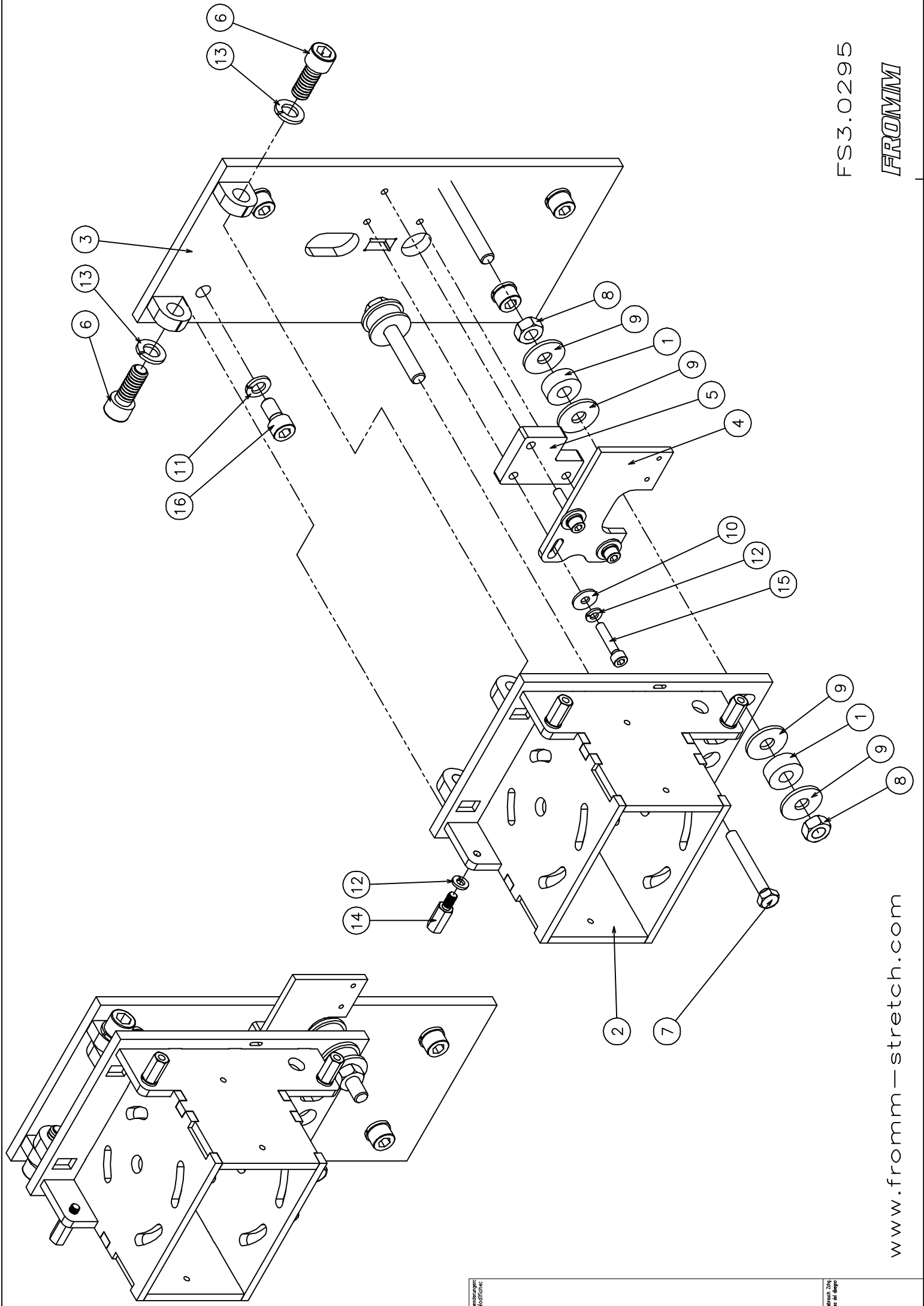
FS3.0278

FROMM

www.fromm-stretch.com

FS3.0278 Complete disk Toppress

Part no.	RIF	Description	Specification English	Q.ty
FS3.2645Z	1	Plate	PLATE ZINCED	1
FS3.2719	2	Topplate	TOPPLATE	1
FS4.1736	3	Sponge	SPONGE	1



FS3.0295

FROMM

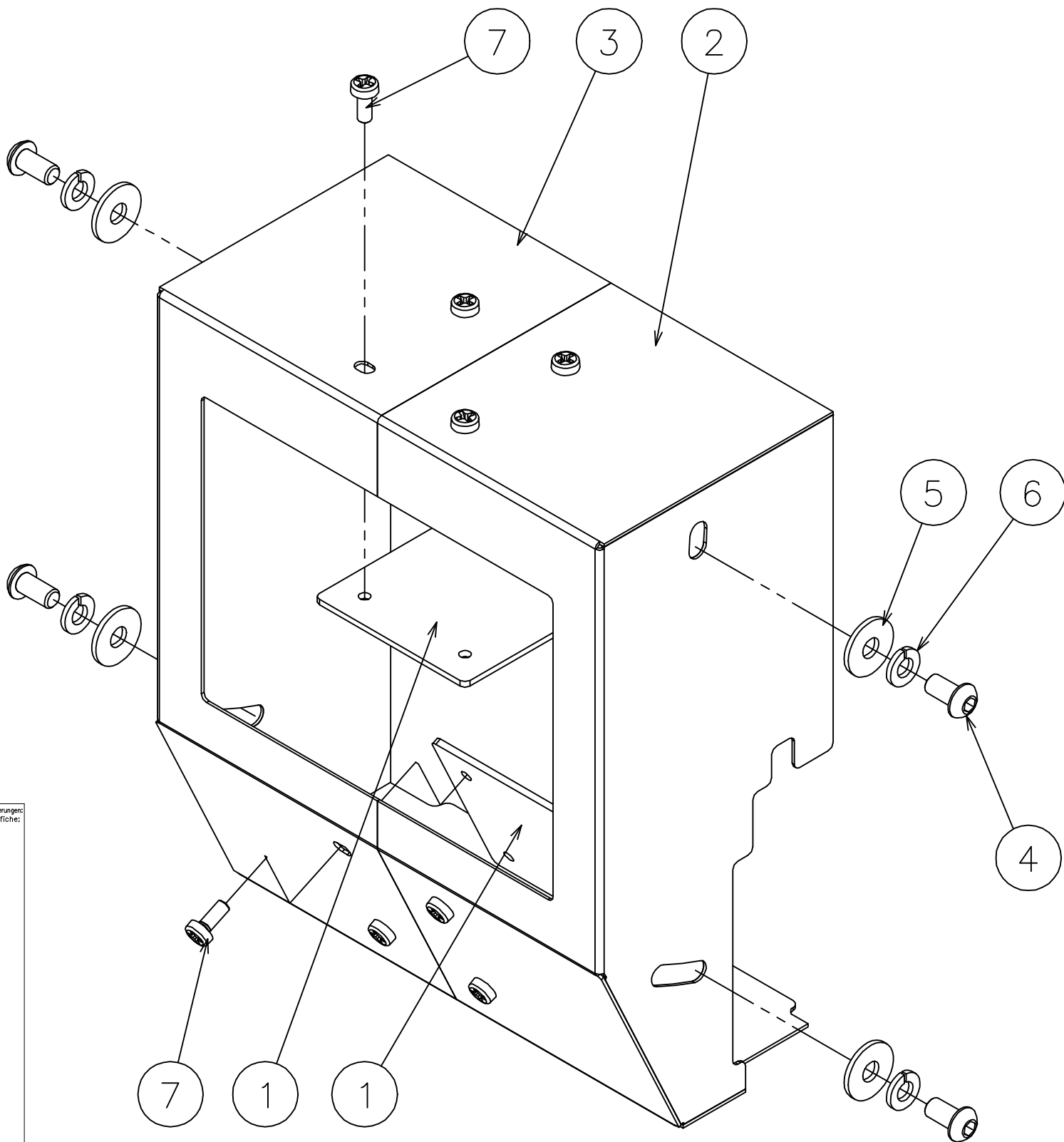
www.fromm-stretch.com

Verstärkung
Aufdruck

Stärke 20g
für alle dränge

FS3.0295 Group carriage Toppres

Part no.	RIF	Description	Specification English	Q.ty
FS3.2643	1	Spring	SPRING	4
FS3.2767Z	2	Bracket	BRACKET ZINCED	1
FS3.2768Z	3	Plate	PLATE ZINCED	1
FS3.2770Z	4	Bracket	BRACKET ZINCED	1
FS3.2771Z	5	Distance pie.	DISTANCE PIECE FOR MICRO ZINCED	1
N1.1137	6	Screw	CYLINDRICAL HEAD CAP SCREWS DIN 912 M12 x 30	2
N1.1576	7	Screw	HEXAGON HEAD SCREW DIN 933 CL 8.8 M8 X 60	1
N1.5108	8	Nut	NUT DIN 934 - M10	4
N1.6130	9	Washer	PLAIN WASHER M5 DIN 433	8
N1.6131	10	Washer	PLAIN WASHER M6 6,4x18x1,6 DIN 9021B	3
N1.6201	11	Washer	SPRING LOCK WASHER DIN 127 -B- M10	4
N1.6204	12	Washer	SPRING LOCK WASHER DIN 127 -B- M6	7
N1.6214	13	Washer	SPRING LOCK WASHER DIN 127 -B- M12	2
N5.3838	14	Distance pie.	DISTANCE PIECE M6 L=20MM	4
N11.1123	15	Screw	CYLINDRICAL HEAD CAP SCREWS DIN 912 M6 x 30	3
N12.1125	16	Screw	CYLINDRICAL HEAD CAP SCREWS DIN 912 M10 x 20	4



Anderungen:
Modifiche:

Petrucci Zitta,
Iso del disegno

FS3.0299G Group carter Toppress

Part no.	RIF	Description	Specification English	Q.ty
FS3.2772G	1	Plate	PLATE YELLOW RAL 1021	2
FS3.2773G	2	Bracket	CARTER YELLOW RAL 1021	1
FS3.2774G	3	Bracket	CARTER YELLOW RAL 1021	1
N1.1219	4	Screw	BUTTON HEAD SCREW ISO 7380 - M6 x 12 ZINCED	4
N1.6131	5	Washer	PLAIN WASHER M6 6,4x18x1,6 DIN 9021B	4
N1.6204	6	Washer	SPRING LOCK WASHER DIN 127 -B- M6	4
N1.7333	7	Screw	CYLINDRICAL HEAD SCREW UNI 8112 - M4 x 10	8