

# **FROMM**

**Numbers & Drawings Art. code : FS4.1398**

**Stretch Wrapping machine's  
FS4xx**

**Version 02/03 Machines  
Version 02 List**

**Website : [www.fromm-stretch.com](http://www.fromm-stretch.com)**

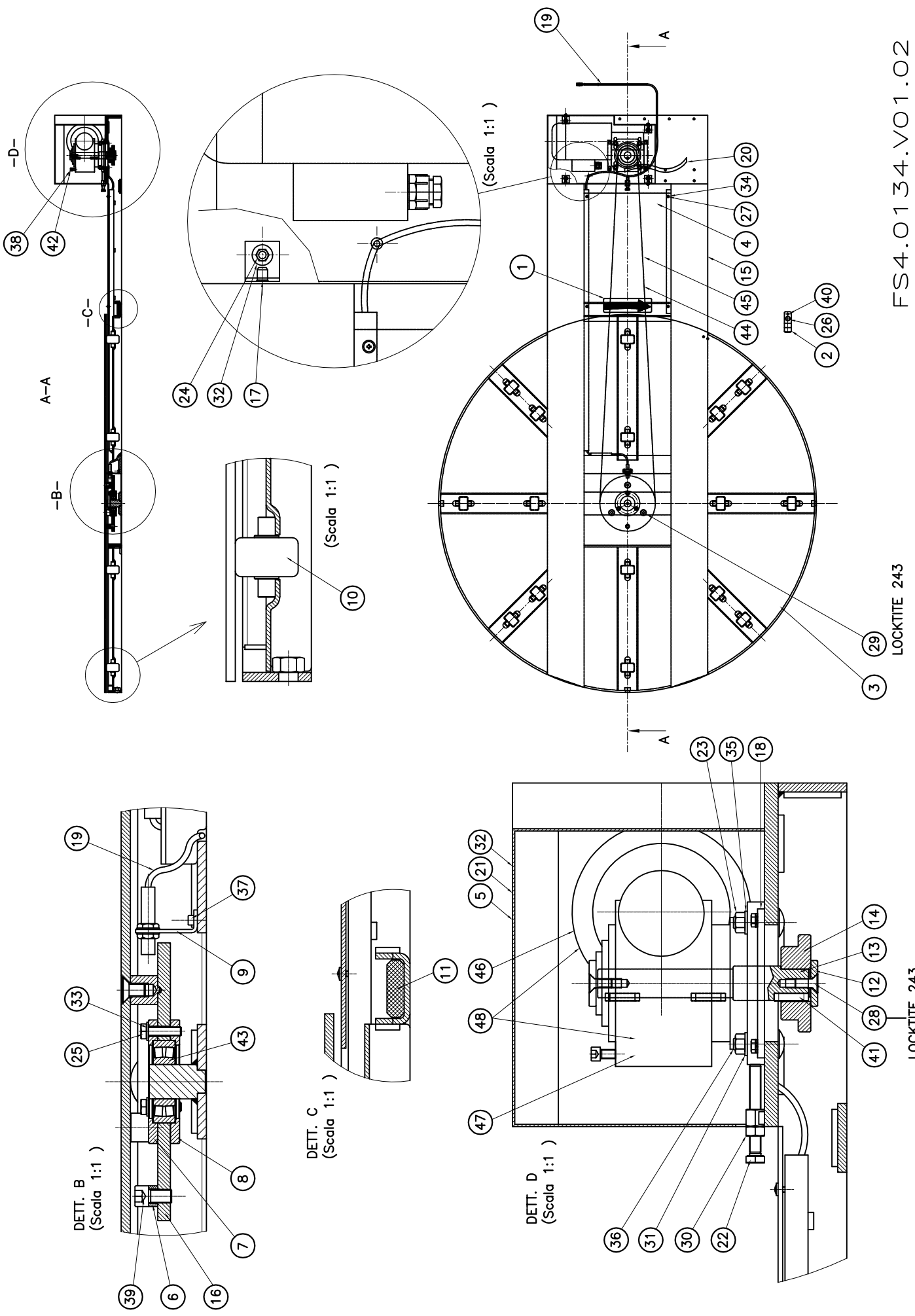
SPARE-PARTS\_FS4xx.V02.EN02/a.servisi/ © 03/10

## **Maintenance Advice:**

- A = Clean**
- B = Tighter**
- C = Check wearing**
- D = Grease**
- E = Control**



Machine code	Description	Base Unit	Operation Panel	Mast	Stretch	Mast Top-Plate	Arm Top-Plate
30.1801	FS400 OP4/D1650/H2050/C7	FS4.0134	FS4.0129/SLO	FS4.0135	FS4.0132		
30.1805	FS400 OP4/D1800/H2050/C7	FS4.0136	FS4.0129/SLO	FS4.0135	FS4.0132		
30.1810	FS400 OP4/D2200/H2050/C7	FS4.0151	FS4.0129/SLO	FS4.0135	FS4.0132		
30.1815	FS400 OP4/HSR-D1650/H2050/C7	FS4.0156	FS4.0131/SLO	FS4.0135	FS4.0132		
30.1818	FS400 OP4/HSF-D1650/H2050/C7	FS4.0153	FS4.0131/SLO	FS4.0135	FS4.0132		
30.1820	FS401 OP4/D1650/H2600/C7	FS4.0134	FS4.0129/SLO	FS4.0138	FS4.0132		
30.1821	FS401 OP4/D1650/H3200/C7	FS4.0134	FS4.0129/SLO	FS4.0161	FS4.0132		
30.1825	FS401 OP4/D1800/H2600/C7	FS4.0136	FS4.0129/SLO	FS4.0138	FS4.0132		
30.1826	FS401 OP4/D1800/H2600/C7	FS4.0154	FS4.0129/SLO	FS4.0138	FS4.0132		
30.1827	FS401 OP4/D1800/H3200/C7	FS4.0136	FS4.0129/SLO	FS4.0161	FS4.0132		
30.1830	FS401 OP4/D2200/H2600/C7	FS4.0151	FS4.0129/SLO	FS4.0138	FS4.0132		
30.1831	FS401 OP4/D2200/H3200/C7	FS4.0151	FS4.0129/SLO	FS4.0161	FS4.0132		
30.1835	FS401 OP4/HSR-D1650/H2600/C7	FS4.0156	FS4.0131/SLO	FS4.0138	FS4.0132		
30.1838	FS401 OP4/HSF-D1650/H2600/C7	FS4.0153	FS4.0131/SLO	FS4.0138	FS4.0132		
30.1839	FS401 OP4/HSF-D1650/H2600/C7	FS4.0160	FS4.0131/SLO	FS4.0138	FS4.0132		
30.1840	FS402 OP4/D1650/H2050/C7	FS4.0134	FS4.0130/SLO	FS4.0135	FS4.0132	FS4.0139	FS4.0140
30.1845	FS402 OP4/D1800/H2050/C7	FS4.0136	FS4.0130/SLO	FS4.0135	FS4.0132	FS4.0139	FS4.0141
30.1855	FS402 OP4/HSR-D1650/H2050/C7	FS4.0156	FS4.0145/SLO	FS4.0135	FS4.0132	FS4.0139	FS4.0142
30.1858	FS402 OP4/HSF-D1650/H2050/C7	FS4.0153	FS4.0145/SLO	FS4.0135	FS4.0132	FS4.0139	FS4.0158
30.1860	FS403 OP4/D1650/H2600/C7	FS4.0134	FS4.0130/SLO	FS4.0138	FS4.0132	FS4.0143	FS4.0140
30.1865	FS403 OP4/D1800/H2600/C7	FS4.0136	FS4.0130/SLO	FS4.0138	FS4.0132	FS4.0143	FS4.0141
30.1875	FS403 OP4/HSR-D1650/H2600/C7	FS4.0156	FS4.0145/SLO	FS4.0138	FS4.0132	FS4.0143	FS4.0142
30.1876	FS403 OP4/D1650/H2850/C7	FS4.0134	FS4.0130/SLO	FS4.0162	FS4.0132	FS4.0143	FS4.0140
30.1878	FS403 OP4/HSF-D1650/H2600/C7	FS4.0153	FS4.0145/SLO	FS4.0138	FS4.0132	FS4.0143	FS4.0142
30.1885	FS404 OP4/D1800/H3400/C7	FS4.0136	FS4.0130/SLO	FS4.0169	FS4.0132	FS4.0143	FS4.0141



FS4.0134.VO1.02

FROMM

LOCKTITE 243

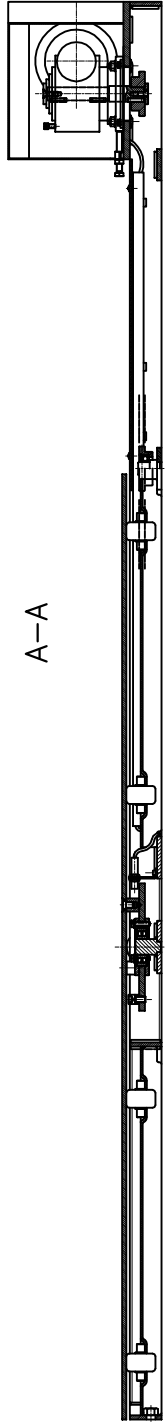
LOCKTITE 243

www.fromm-stretch.com

Scale: 1:1

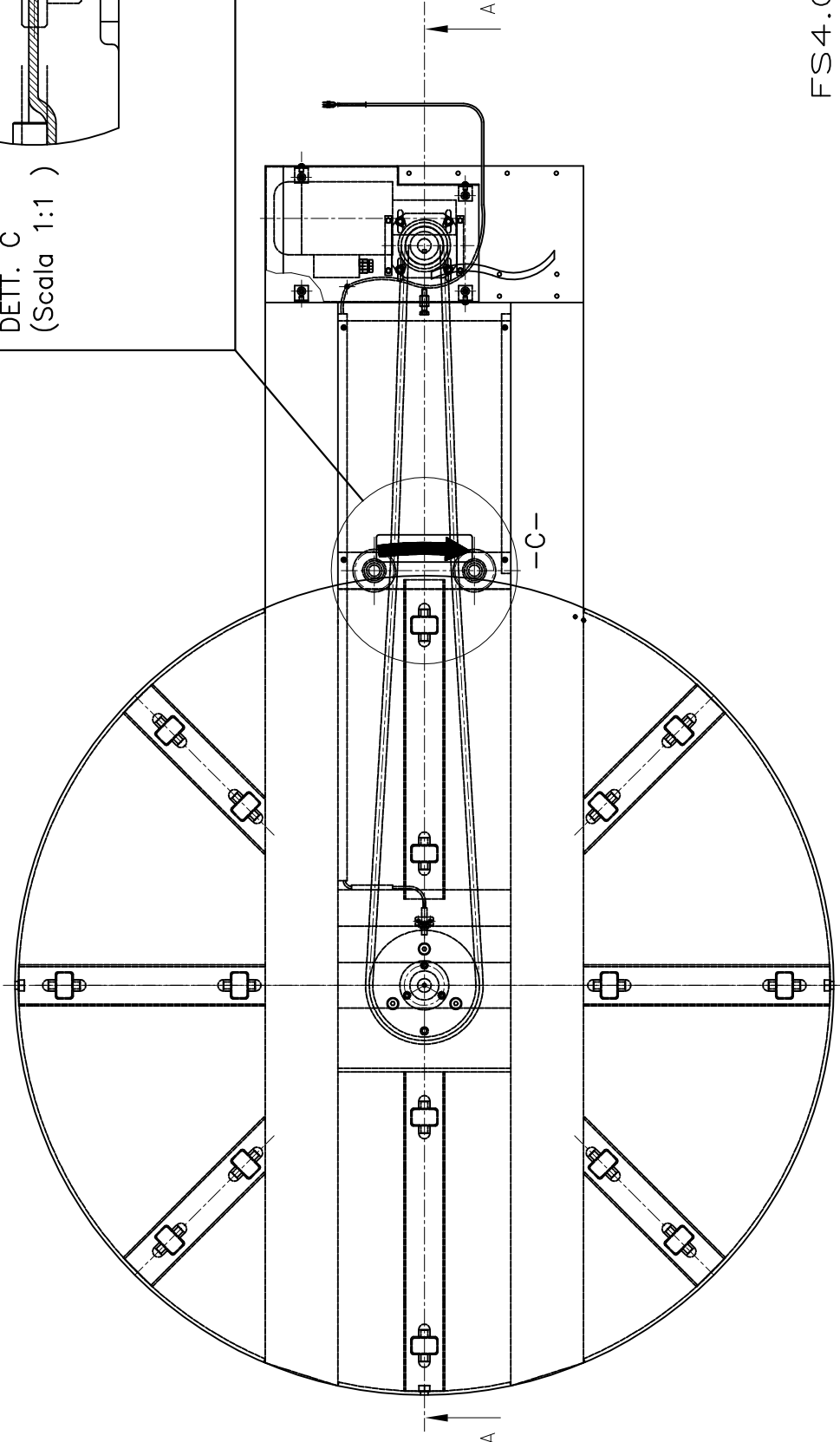
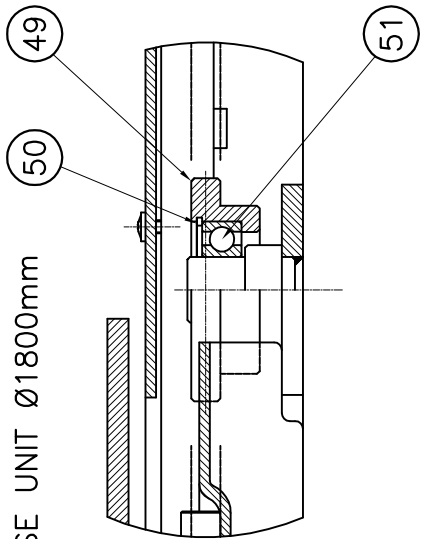
Scale: 1:1

A-A



DIFFERENCE FROMM Ø1650mm  
ONLY FOR BASE UNIT Ø1800mm

DETT. C  
(Scala 1:1)



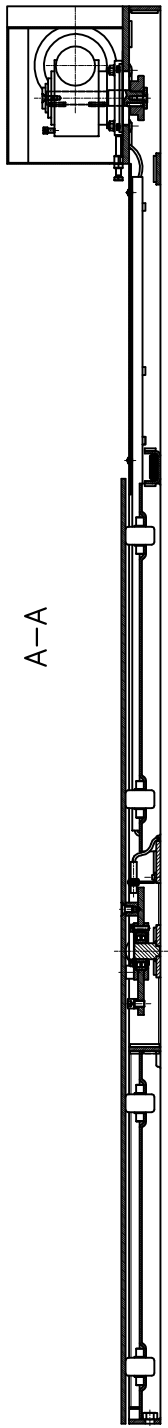
Scale  
Modifiche

Scale  
Modifiche

FS4.0136.V01.02

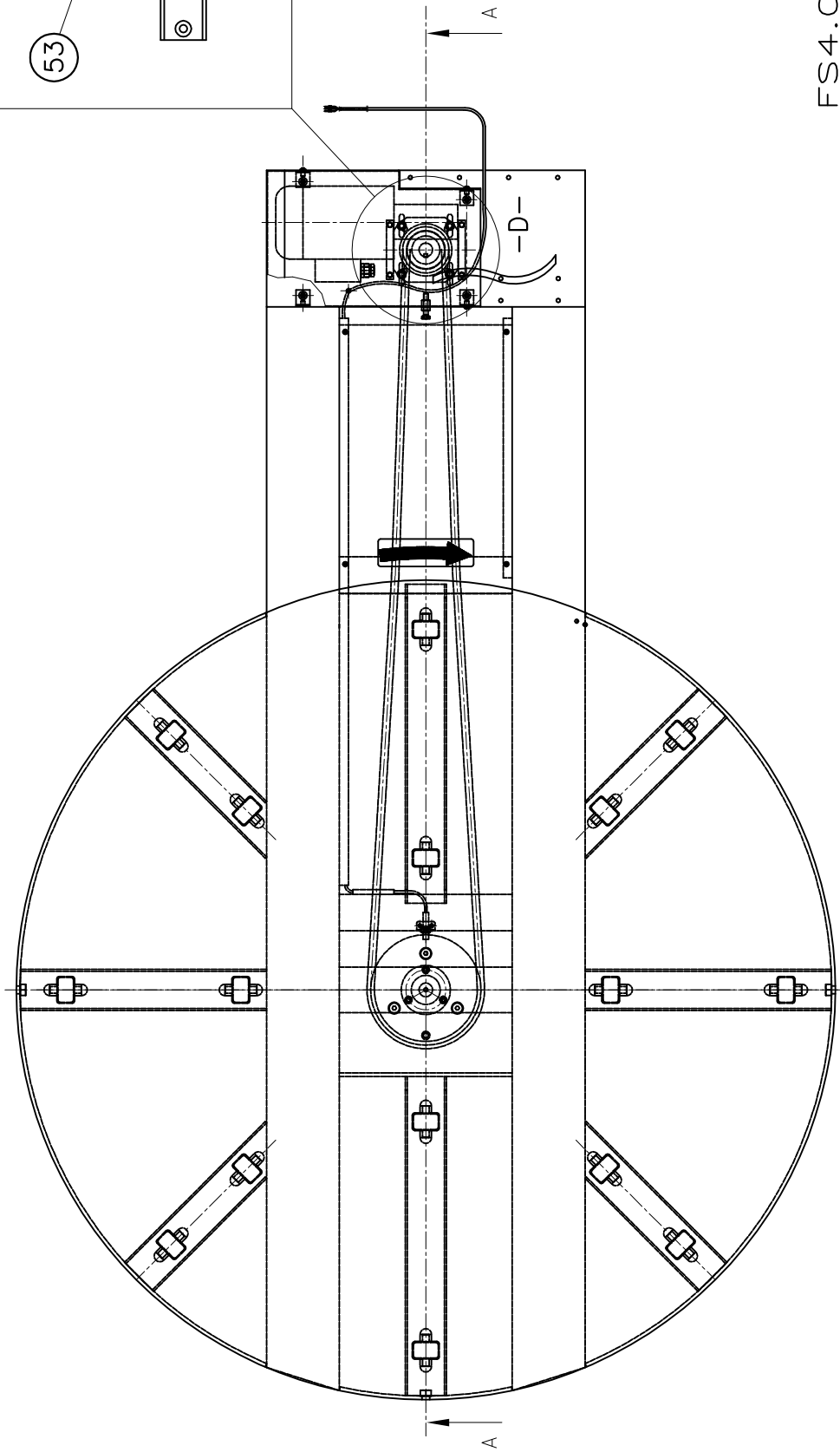
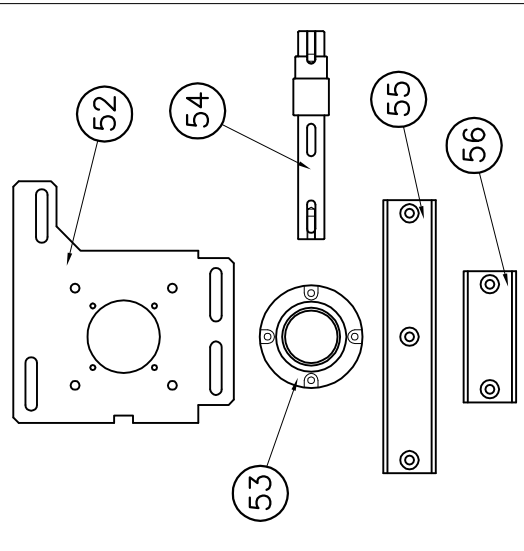
www.fromm-stretch.com

FROMM



A-A

DIFFERENCE FROMM Ø1650mm  
 ONLY FOR BASE UNIT Ø2200mm  
 DETT. D  
 (Scala 2:1 )



Scale: 1:1

Scale: 1:1

FS4.0151.V01.02

**FS4.0134/FS4.0136/FS4.0151 Base Unit (Ø1650/Ø1800/Ø2200mm)**

Part no.	RIF	Description	Specification English	Quantity	Maintenance
FS1.1379	1	Label	LABEL WITH DRAWING OF ARROW	1	E
FS1.1383	2	Plate	PLATE FOLDED FIXED ON THE TURNTABLE	1	
FS4.1001	3	Disk	PAINTED DISK D.1650 YELLOW RAL 1021	1	A
FS4.1093	3	Disk	PAINTED DISK D.1800 YELLOW RAL 1021	1	A
FS4.1173	3	Disk	PAINTED DISK D.2200 YELLOW RAL 1021	1	A
FS4.1002	4	Cover	PAINTED CLOSING BASE D.1650 BLUE RAL 5010	1	
FS4.1095	4	Cover	PAINTED CLOSING BASE D1800/2200 BLUE RAL5010	1	
FS4.1003	5	Carter	PAINTED MOTOR CARTER BLUE RAL 5010	1	E
FS4.1013	6	Bush	SPACER M12	1	
FS4.1014	7	Flange	BALL BEARING HOUSING	1	E
FS4.1015	8	Flange	BALL BEARING HOUSING	1	E
FS4.1016	9	Bracket	PROXIMITY BRACKET	1	E
FS4.1017	10	Roll	ROLL	16	A-C
FS4.1018	11	Plate	POLIZENE	1	C
FS4.1019	12	Washer	SPECIAL WASHER	2	
FS4.1020	13	Shaft	SHAFT	1	C
FS4.1021	14	Pinion	PINION	1	
FS4.1078	15	Group	PAINTED BASE UNIT DIAMETER 1650 BLUE RAL 5010	1	
FS4.1094	15	Group	PAINTED BASE UNIT DIAMETER 1800 BLUE RAL 5010	1	
FS4.1174	15	Group	PAINTED BASE UNIT DIAMETER 2200 BLUE RAL 5010	1	
FS4.1079	16	Group	WELDED GEAR-SHAFT GROUP	1	
FS4.1080	17	Group	BRACKET-RIVET GROUP	4	
FS4.1168	18	Guide	MOTOR GUIDE	2	B
FS4.1210	19	Cable	PROXIMITY CABLE (BASE UNIT)	1	
FS4.1248	20	Sheath	SHEATH PVC GREY	1	
N1.1222	21	Screw	BUTTON HEAD SCREW ISO 7380 - M6 x 20	4	
N1.1425	22	Bolt	HEXAGONAL HEAD BOLT M10x80 ZINCED DIN 933	1	B
N1.1518	23	Screw	HEXAGONAL HEAD BOLT M6x18 ZINCED DIN 933	4	B
N1.1573	24	Screw	HEXAGONAL HEAD BOLT M6x12 ZINCED DIN 933	4	
N1.1580	25	Bolt	HEXAGONAL HEAD BOLT M8x30 ZINCED DIN 933	3	E
N1.1591	26	Bolt	HEXAGONAL HEAD BOLT M10x12 ZINCED DIN 933	1	
N1.1942	27	Screw	CYLINDRICAL HEAD CAP SCREW M5x10 ZN DIN 7985	4	
N1.2147	28	Bolt	SOCKET CTRS. HD BOLT M8x20 DIN 7991	2	E
N1.2167	29	Bolt	SOCKET CTRS. HD BOLT M12x20 DIN 7991	3	
N1.5108	30	Nut	NUT CL.8 PG M10 DIN 934	1	B

**FS4.0134/FS4.0136/FS4.0151 Base Unit (Ø1650/Ø1800/Ø2200mm)**

Part no.	RIF	Description	Specification English	Quantity	Maintenance
N1.6161	31	Washer	PLAIN WASHER M10 10,5x20x2 ZINCED DIN 125A	4	
N1.6163	32	Washer	PLAIN WASHER M6 6,4x12x1,6 ZINCED DIN 125A	8	
N1.6164	33	Washer	PLAIN WASHER M8 8,4x16x1,6 ZINCED DIN 125A	3	
N1.6167	34	Washer	PLAIN WASHER M5 5,3x10x1 ZINCED DIN 125A	4	
N1.6220	35	Washer	PLAIN WASHER M6 (9.9x1.6) ZINCED DIN 7980	4	
N1.7327	36	Nut	NUT M10x40 ZINCED DIN 603	4	<b>B</b>
N11.1118	37	Screw	CYLINDRICAL HEAD SCREW M5x10 ZINCED DIN 912	2	<b>E</b>
N11.1149	38	Bolt	CYLINDRICAL HEAD SCREW M8x30 ZINCED DIN 912	1	
N11.1194	39	Bolt	CYLINDRICAL HEAD SCREW M12x20 ZINCED DIN 912	1	
N2.2455	40	Elastic thorn	ELASTIC THORN D.8x10 BLACK DIN 1481	1	
N2.3349	41	Key	KEY 8x7x30 DIN 6885A	3	
N2.7201	42	Plastic tie	PLASTIC TIE 170x4.8	1	
N3.4901	43	Ball Bearing	BALL BEARING 30x72x19 21306CC	1	<b>A-D</b>
N4.7347	44	Chain	CHAIN 3/4"x7/16" 185 LINKS BASE UNIT D.1650/2000	1	<b>B-D</b>
N4.7353	44	Chain	CHAIN 3/4"x7/16" 197 LINKS BASE UNIT D.1800	1	<b>B-D</b>
N4.7404	45	Link	LINK 3/4"x7/16"	1	<b>E</b>
N5.1181	46	Motor	MOTOR 4POLES T80B 0,75KW V230/400 FLANGE B14	1	<b>B-C</b>
N4.7631	47	Gear	GEAR FRS60 FAB5i 1:49 PAM80 B14	1	<b>B-C</b>
N5.1184	48	Motor/Gear	GEARBOX IEC80 0.75kW/4 POLES 230/400V 50Hz	1	<b>B-C</b>
<b>DIFFERENCE FROMM Ø1650mm (ONLY FOR FS4.0136 Base Unit Ø1800mm)</b>					
FS4.1096	49	Pinion	PINION	2	
N2.1217	50	Seeger	SEEGER FOR HOLES TYPE J D.52 DIN 472	2	
N3.1181	51	Ball Bearing	BALL BEARING 6205.2RS1 25x52x15	2	<b>A-D</b>
<b>DIFFERENCE FROMM Ø1650mm (ONLY FOR FS4.0151 Base Unit Ø2200mm)</b>					
FS4.1176	52	Plate	PLATE	1	
FS4.1178	53	Flange	BALL BEARING HOUSING	1	
FS4.1179	54	Shaft	SHAFT	1	<b>D</b>
FS4.1180	55	Polizene	POLIZENE	1	<b>C</b>
FS4.1181	56	Polizene	POLIZENE	2	<b>C</b>
N1.1511	57	Bolt	HEXAGON HEAD BOLT M10x30 DIN 933 GALVANIZED	4	
N1.1546	58	Bolt	HEXAGON HEAD BOLT M10x25 DIN 933 GALVANIZED	4	
N1.1586	59	Bolt	HEXAGON HEAD BOLT M8x12 DIN 933 GALVANIZED	4	
N1.2147	29	Bolt	SOCKET CTRS. HD BOLT M8x20 DIN 7991	2+7	
N1.6109	61	Washer	WASHER D.24x8.4 DIN 9021/B GALVANIZED	4	
N1.6189	62	Washer	WASHER 10.5x28x4 DIN 6340 GALVANIZED	4	
N1.6220	63	Washer	PLAIN WASHER M6 (9.9x1.6) ZINCED DIN 7980	4	
N11.1142	64	Screw	CYLINDRICAL HEAD SCREW M6x16 DIN 912 GALV.	4	
N3.1116	65	Ball Bearing	BALL BEARING 30x55x13 6006.2RS	1	<b>A-D</b>



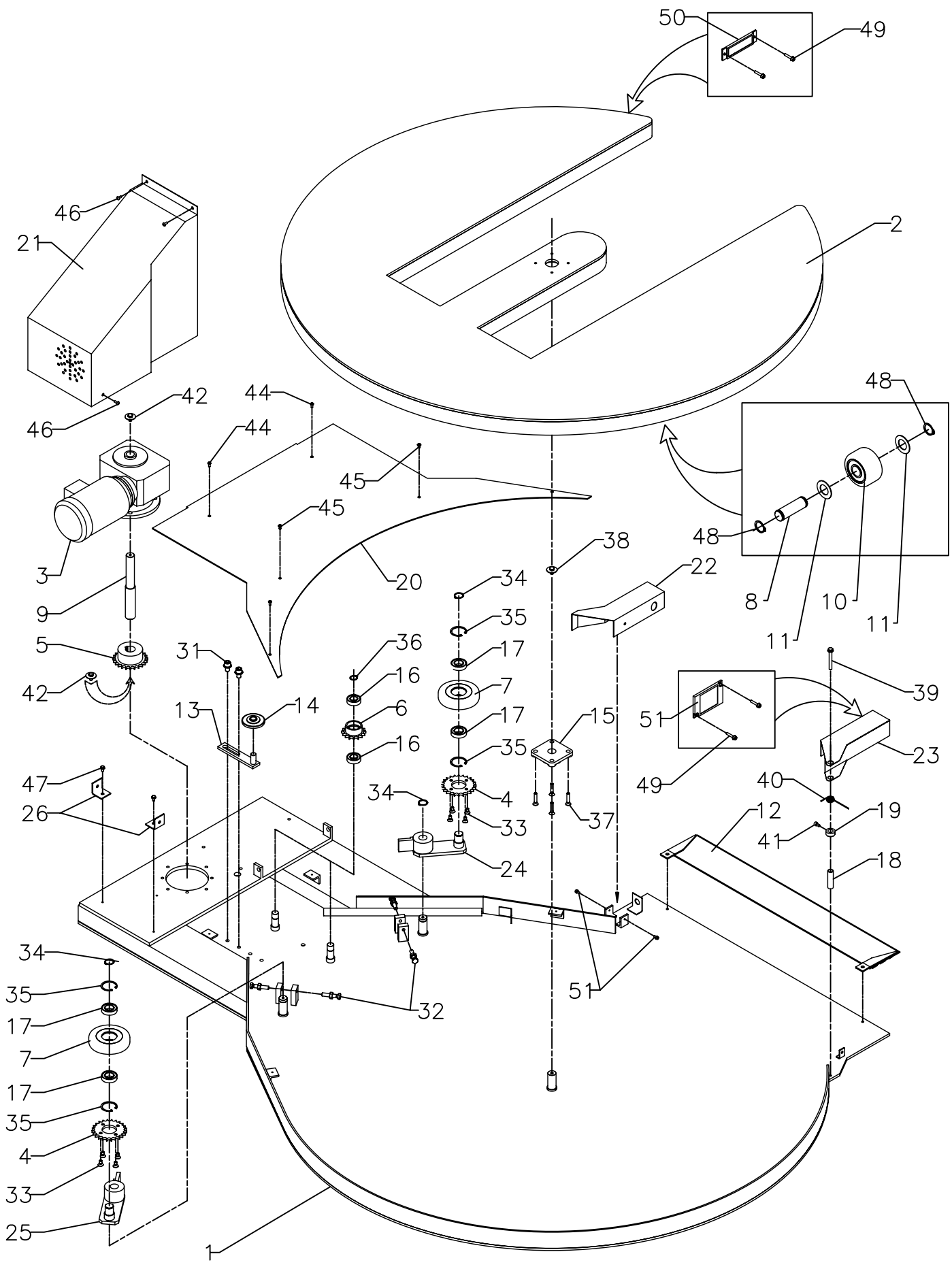


This subject is protected under the provisions of the patent laws of the United States of America and other countries. No part of this document may be reproduced without the written permission of the manufacturer.

NON È PERMESSO COPIARE, IN TUTTO O IN PARTE, O RIPRODURRE QUESTO DOCUMENTO NE' UTILIZZARE IL CONTENUTO O I DATI CONTENUTI IN QUESTO DOCUMENTO SENZA IL CONSENSO SCRITTO DEL PROPRIETARIO. È RICHIEDUTO IL DAVANTI A TUTTI I DIRITTI RISERVATI DA BREVETTO E PATENTE.

Änderungen:  
Modifiche:

Änderung Jahr  
Modif. anno



Pos.	Objekt	Pos.	Material	Material	Material	Material	Material	Material	
Änderungen: Modifiche:									
WORLD SHOE TURNABLE FS2XX RIGHT SIDE LOADING		D-FS2.0124.V01.01		1:1		Pinnings 23-05-06			
FROMM		FS2.0124							

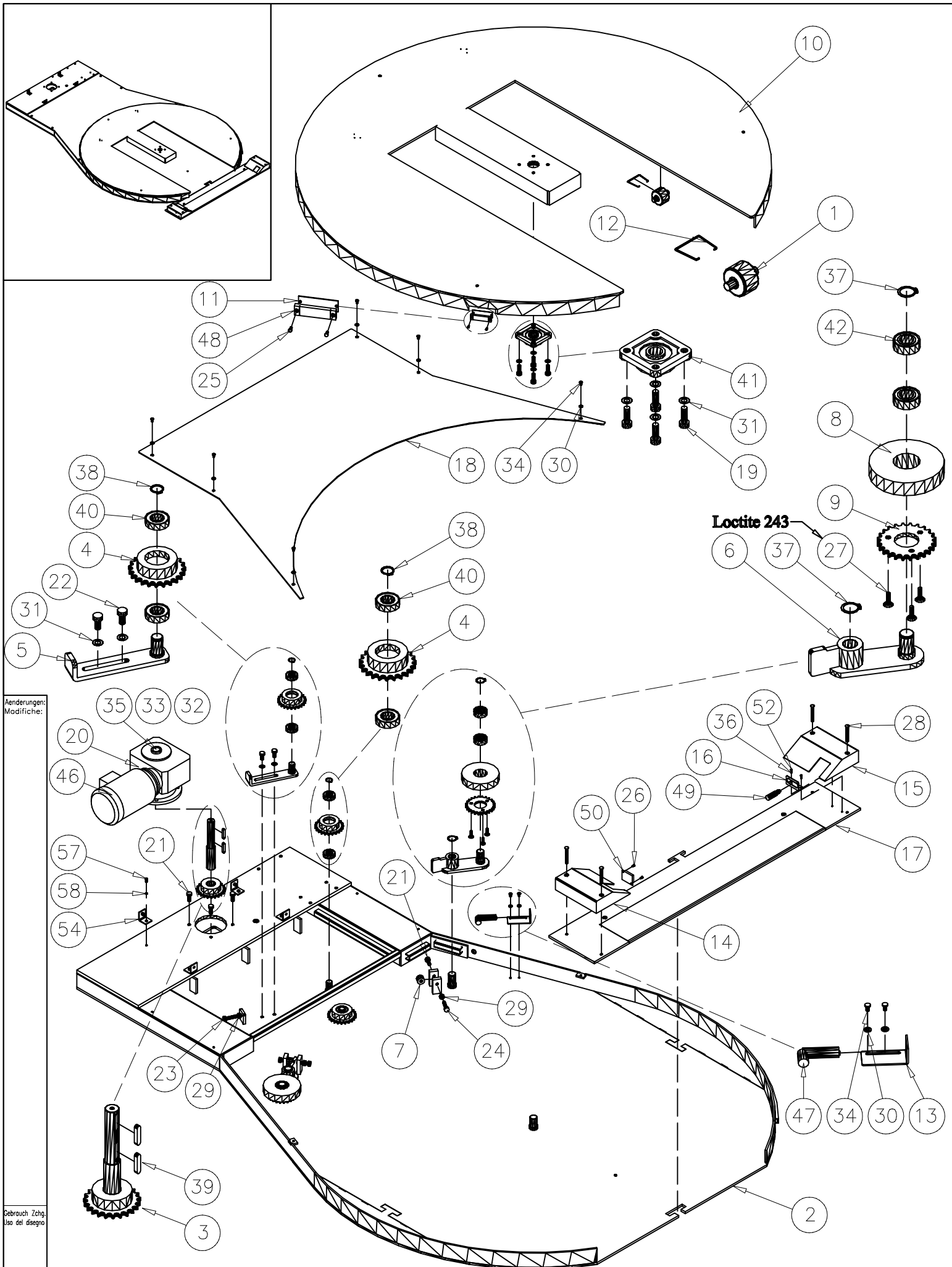
**FS2.0124 Horse Shoe Ø1650mm (Left/Front side loading) Machine Version 02**

Part no.	RIF	Description	Specification English	Quantity	Maintenance
FS2.1065	1	Base unit	BASE UNIT TRANSPALLET (LEFT SIDE LOADING)	1	
FS2.1132	1	Base unit	BASE UNIT TRANSPALLET (FRONT SIDE LOADING)	1	
FS2.1074	2	Disk	TURNTABLE (LEFT SIDE LOADING)	1	
FS2.1133	2	Disk	TURNTABLE (FRONT SIDE LOADING)	1	
N5.1166	3	Motor	MOTORGear R.1/10 230-400V IP55 ROTAZIONE	1	
N2.3349	3	Key	KEY UNI 6604 8X7X30	3	
N5.3321	3	Cable gland	CABLE GLAND SKINTOP PG16 D.C.V. 9/14	1	
FS2.1070	4	Chain wheel	CORONA RUOTA TRAINO DISCO 1/2X5/16 Z24	2	D-E
FS2.1068	5	Chain wheel	MOTOR SHAFT P.1/2X5/16 Z16	1	D-E
FS2.1069	6	Chain wheel	FREE PIGNON 1/2X5/16 Z16	2	D-E
FS2.1071	7	Support wheel	MOVEMENT TURNTABLE WHEEL	2	C
FS2.1075	8	Shaft	TURNTABLE WHEEL PIVOT	8	
FS2.1054	9	Shaft	MOTOR SHAFT PINION	1	D-E
FS2.1006	10	Roller	BASE WHEEL	8	
N31.1105	10	Ball bearing	BALL BEARING 6203 2RS 17X40X12	16	A-C
N3.4311	11	Distance	THRUSH BLOCK AS 1730	16	
FS2.1066	12	Ramp	PAINTED LOAD PLATFORM	1	
FS2.1009	13	Bracket	PAINTED CHAIN REGULATOR SUPPORT	1	
N4.7243	14	Chain wheel	CHAIN REGULATOR 1/2 Z16	1	
N3.4624	15	Ball bearing	SWINGING BRACKET UCF 205	1	
N31.1107	16	Ball bearing	BALL BEARING 6004 2RS 20X42X12	4	A-D
N31.1108	17	Ball bearing	BALL BEARING 6005 25X47X12	4	A-D
FS2.1060	18	Reflector	REFLECTOR CASING PIVOT PERNO	1	
N7.2208	19	Metal ring	SET COLLAR DIN 705 SHAPE C DIAM.17	1	
FS2.1062	20	Cover	PAINTED CARRIAGE CHAIN PROTECTION CASING	1	
FS2.1056	21	Cover	PAINTED MOTOR CASING	1	
FS2.1063	22	Cover	PAINTED PHOTOCCELL PROTECTION CASING	1	E
N5.2643	22	Photoelectric cell	REFLECTOR 90°	2	
FS2.1064	23	Cover	PAINTED REFLECTOR PROTECTION CASING	1	
FS2.1072	24	Bracket	LEFT MOVEMENT TURNTABLE WHEEL BRACKET	1	
FS2.1073	25	Bracket	RIGHT MOVEMENT TURNTABLE WHEEL BRACKET	1	
FS2.1067	26	Bracket	PAINTED ANGULAR MOTOR CASING ANGOLAR C	2	
FS1.1383	27	Bracket film	BRACKET FOR THE FILM	1	
N1.1591	28	Screw	HEXAGON SCREW M10X12	1	
N2.2455	29	Roll pin	ROLL PIN FRP 8X10 STEEL	1	
N11.1194	31	Screw	HEXAGON SOCKET HEAD CAP SCREWS M12X20	2	B
N1.6121	31	Washer	WASHER 13X24X2.5	2	
N1.1568	32	Screw	HEXAGON SCREW M10X50	4	E
N1.5108	32	Nut	NUT M10	4	
N1.2117	33	Screw	SOCKET CTRS. HD SCREW M8X16	8	B-Locktite
N2.1105	34	Retaining ring	CIRCLIP J25	4	

**FS2.0124 Horse Shoe Ø1650mm (Left/Front side loading) Machine Version 02**

Part no.	RIF	Description	Specification English	Quantity	Maintenance
N2.1205	35	Retaining ring	CIRCLIP J47	4	
N2.1108	36	Retaining ring	CIRCLIP E20	2	
N1.2160	37	Screw	SOCKET CTRS. HD SCREW M8X30	4	<b>B</b>
N1.1507	38	Screw	HEXAGON SCREW M8X16	1	
N1.6176	38	Washer	WASHER 8.4X35X1.5	1	
N11.1165	39	Screw	HEXAGON SOCKET HEAD CAP SCREWS M8X70	1	<b>B</b>
N1.6117	39	Washer	WASHER 8.4X17X1.6	1	
FS2.1061	40	Photoelectric cell	PHOTOCELL CASING EMERGENCY SPRING	1	
N11.1135	41	Screw	HEXAGON SOCKET HEAD CAP SCREWS M6X12	1	
N1.1507	42	Screw	HEXAGON SCREW M8X16	2	<b>B</b>
N1.6176	42	Washer	WASHER 8.4X35X1.5	2	
N1.1511	43	Screw	HEXAGON SCREW M10X30	4	
N1.6161	43	Washer	WASHER 10.5X20X2 UNI 6592	4	
N1.6201	43	Lock washer	SPRING LOCK WASHER M10	4	
N1.1218	44	Screw	HEXAGON SOCKET BOTTOM HEAD M5X12 ISO 7380	4	
N1.1219	45	Screw	HEXAGON SOCKET BOTTOM HEAD M6X12 ISO 7380	2	
N1.1220	46	Screw	HEXAGON SOCKET BOTTOM HEAD M6X16 ISO 7380	4	
N1.1219	47	Screw	HEXAGON SCREW M6X12	2	
N1.6114	47	Washer	WASHER 6.4X12.5X1.6	2	
N2.1112	48	Retaining ring	ELASTIC RING DIN 471 D1.7	32	
N11.1198	49	Screw	HEXAGON SOCKET HEAD CAP SCREWS M3X16	4	<b>B</b>
N1.6123	49	Washer	WASHER 3.2X7X0.5	4	
N5.2644	50	Reflector	REFLECTOR RL 112-G 19X73	1	<b>A</b>
N5.2645	51	Reflector	REFLECTOR RL 116 41X52	1	<b>A</b>
N11.1101	52	Screw	HEXAGON SOCKET HEAD CAP SCREWS M5X12	2	
N1.6167	52	Washer	WASHER 5.3X10	2	
N5.6612	53	Connection box	CONNECTION BOX GW 44002 GEWISS	1	
N4.7341		Chain	PRESTRETCH CHAIN 1/2X5/16 P233	1	
N4.7413		Chain	CHAIN LINK 1/2X5/16	1	<b>B-D</b>
N2.1205		Retaining ring	CIRCLIP J47	4	
N2.1105		Retaining ring	CIRCLIP J25	2	





Anderungen:

Modifiche:

Gebrauch: Zeichn.

Uso del disegno

FS4.0153/FS4.0156.V03.02

www.fromm-stretch.com

**FROMM**

**FS4.0153/FS4.0156 Horse Shoe Ø1650mm (Front/Rightl side loading) Machine Version 03**

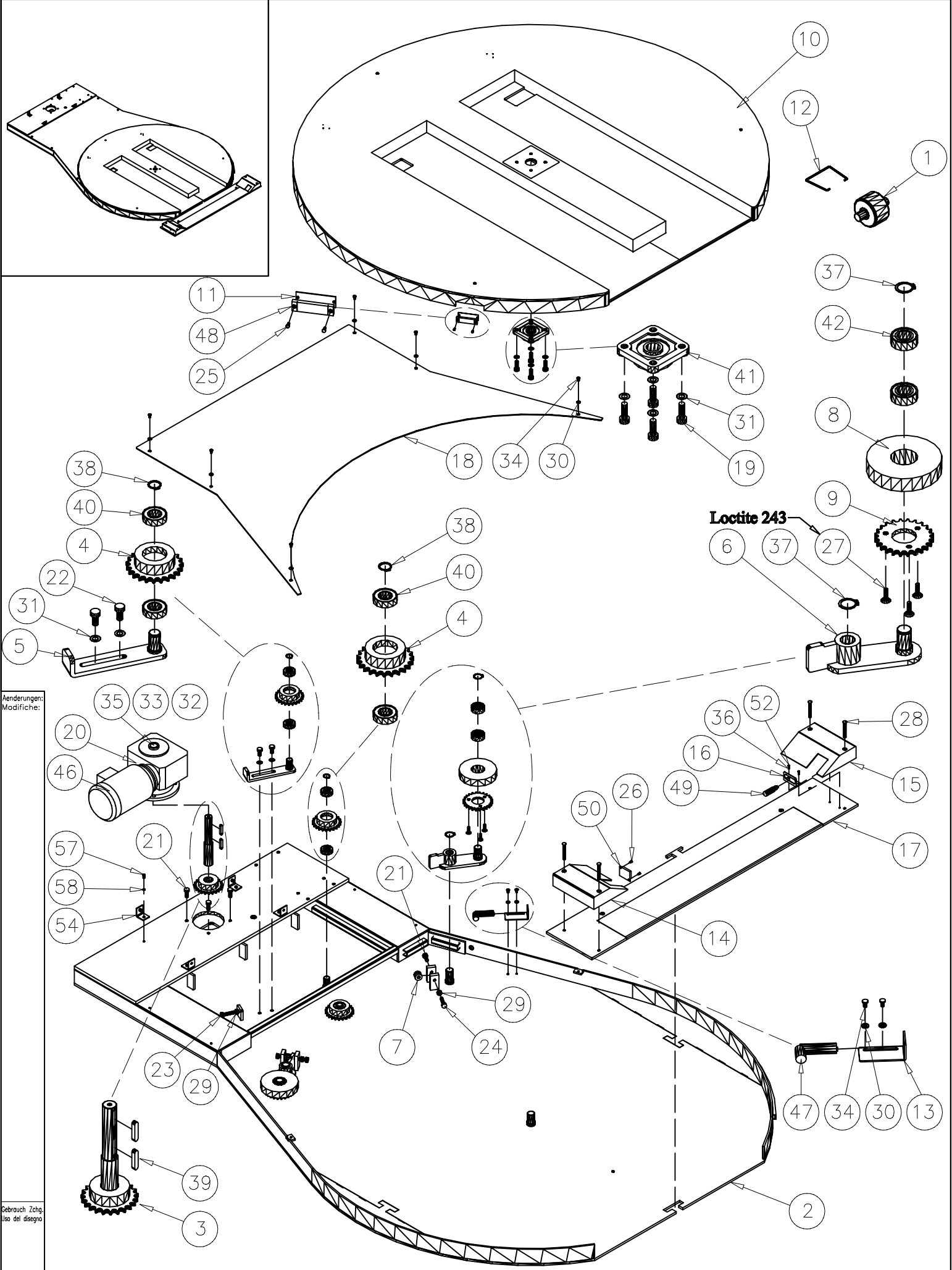
Part no.	RIF	Description	Specification English	Quantity	Maintenance
FS4.1017	1	Roll	ROLL	8	A-C
FS4.1412	2	Group	PAINTED BASE UNIT D. 1650 FRONT BLUE RAL 5010	1	
FS4.1481	2	Group	PAINTED BASE UNIT D. 1650 RIGHT BLUE RAL 5010	1	
FS4.1437	3	Group	SHAT-PINION 1/2"X5/16" Z=23 GROUP	1	D-E
FS4.1440	4	Pinion	PINION 1/2"X5/16" Z=20	3	E
FS4.1441	5	Bracket	BRACKET	1	
FS4.1444	6	Bracket	BRACKET	2	
FS4.1449	7	Spring	POLIURETANIC SPRING D.E.=25 D.I.=10.5 L=20	2	C
FS4.1450	8	Wheel	RUBBERED WHEEL D=110 FE37	2	C
FS4.1451	9	Pinion	PINION 1/2"X5/16" Z=24	2	E
FS4.1452	10	Disk	PAINTED DISK D.1650 YELLOW RAL 1021	1	A
FS4.1461	11	Plate	PLATE	1	C
FS4.1462	12	Wire steel	INOX AISI 302 WIRE STEEL STOP ROLL	8	
FS4.1463	13	Bracket	BRACKET	1	
FS4.1464	14	Support	REFLECTOR CARTER	1	
FS4.1467	15	Support	PHOTOCELL CARTER	1	
FS4.1469	16	Bracket	PHOTOCELL BRACKET	1	
FS4.1470	17	Access	TRANSPALLET ACCESS	1	
FS4.1471	18	Cover	PAINTED CLO. BASE D.1650 FRONT BLUE RAL 5010	1	
FS4.1487	18	Cover	PAINTED CLO. BASE D.1650 RIGHT BLUE RAL 5010	1	
N1.1511	19	Bolt	HEXAGONAL HEAD BOLT M10x30 ZINCED DIN 933	4	B
N1.1523	20	Screw	HEXAGONAL HEAD SCREW M6x25 ZINCED DIN 933	4	
N1.1546	21	Bolt	HEXAGONAL HEAD BOLT M10x25 ZINCED DIN 933	6	B
N1.1548	22	Bolt	HEXAGONAL HEAD BOLT M10x20 ZINCED DIN 933	2	B
N1.1568	23	Bolt	HEXAGONAL HEAD BOLT M10x50 ZINCED DIN 933	1	
N1.1572	24	Bolt	HEXAGONAL HEAD BOLT M10x40 ZINCED DIN 931	2	E
N1.1614	25	Screw	CYLINDRICAL HEAD SCREW M3x16 ZINCED DIN 85A	2	B
N1.1911	26	Screw	PHILIPS HEAD SCREW M4x8 ZINCED	2	B
N1.2168	27	Bolt	SOCKET CTRS. HD BOLT M8x16 ZINCED DIN 7991	6	B - Locktite
N1.2190	28	Bolt	SOCKET CTRS. HD BOLT M8x60 ZINCED DIN 7991	4	
N1.5108	29	Nut	NUT CL.8 PG M10 DIN 934	3	
N1.6114	30	Washer	PLAIN WASHER M6 6,4x12x1,6 ZINCED DIN 125A	8	
N1.6161	31	Washer	PLAIN WASHER M10 10,5x20x2 ZINCED DIN 125A	6	
N1.6195	32	Washer	PLAIN WASHER M8 8,5x32x2,5 ZINCED DIN 125A	1	
N1.6215	33	Washer	WASHER GROWER M8 ZINCED DIN 127 -B-	1	
N11.1121	34	Screw	CYLINDRICAL HEAD SCREW M6x10 ZINCED DIN 912	8	B
N11.1141	35	Bolt	CYLINDRICAL HEAD BOLT M8x20 ZINCED DIN 912	1	

**FS4.0153/FS4.0156 Horse Shoe Ø1650mm (Front/Rightl side loading) Machine Version 03**

<b>Part no.</b>	<b>RIF</b>	<b>Description</b>	<b>Specification English</b>	<b>Quantity</b>	<b>Maintenance</b>
N11.1162	36	Screw	CYLINDRICAL HEAD SCREW M4x10 ZINCED DIN 912	2	<b>B</b>
N2.1105	37	Seeger	ELASTIC RING TYPE A DIN 471 D.25	4	
N2.1108	38	Seeger	ELASTIC RING TYPE A DIN 471 D.20	3	
N2.3308	39	Key	KEY 8x7x40 DIN 6885	2	
N3.1177	40	Ball bearing	BALL BEARING 20x42x12 6004 2RSL	6	<b>A-D</b>
N3.4624	41	Support	SWINGING BRACKET UCF 205	1	
N31.1141	42	Ball bearing	BALL BEARING 25x47x16 63005 2RS1	4	<b>A-D</b>
N4.7357	43	Chain	CHAIN 1/2"x5/16" 285 LINK ISO 08B-1	1	<b>B-D</b>
N4.7413	44	Link	SPRING CLIP (LINK) 1/2"X5/16" ISO 08B-1	1	
N4.7417	45	End-link	LINK WITH SPLIT PIN C126 N.13 ISO 08B-1	1	
N5.1198	46	Gearbox	GEARBOX SW063 I=10 ENG. 80B 4POLES 0.55kW B14	1	<b>E</b>
N5.2643	47	Photocell	PHOTOCELL REFLECTING 90°	1	<b>E - A</b>
N5.2644	48	Reflector	REFLECTING RL 112-G 19X73 MD	1	<b>A</b>
N5.2667	49	Photocell	PHOTOCELL REFLECTING E3F2-R2BA-P1-E	1	<b>E</b>
N5.2668	50	Reflector	REFLECTING E39-R1	1	<b>A</b>
N5.3134	51	Cable	CABLE FOR PHOTOCELL OR PROXIMITY L.5M D12	1	
N5.3172	52	Cable	CABLE FOR PHOTOCELL OR PROXIMITY L.2M D12 90°	1	
FS4.1059	53	Carter	MOTOR CARTER BLUE RAL 5010	1	
FS4.1080	54	Group	BRACKET-RIVET GROUP	4	
FS4.1248	55	Tube	PVC TUBE	1	
N1.1222	56	Screw	BUTTON HEAD SCREW ISO 7380 - M6 x 20	4	
N1.1573	57	Screw	HEXAGONAL HEAD BOLT M6x12 ZINCED DIN 933	4	
N1.6163	58	Washer	PLAIN WASHER M6 6,4x12x1,6 ZINCED DIN 125A	8	







Anderungen:  
Modifiche:

Gebrauch. Zeich.  
Uso del disegno

FS4.0160.V03.02

**FROMMM**

www.fromm-stretch.com

**FS4.0160 Horse Shoe Ø1650mm Roll Container, Machine Version 03**

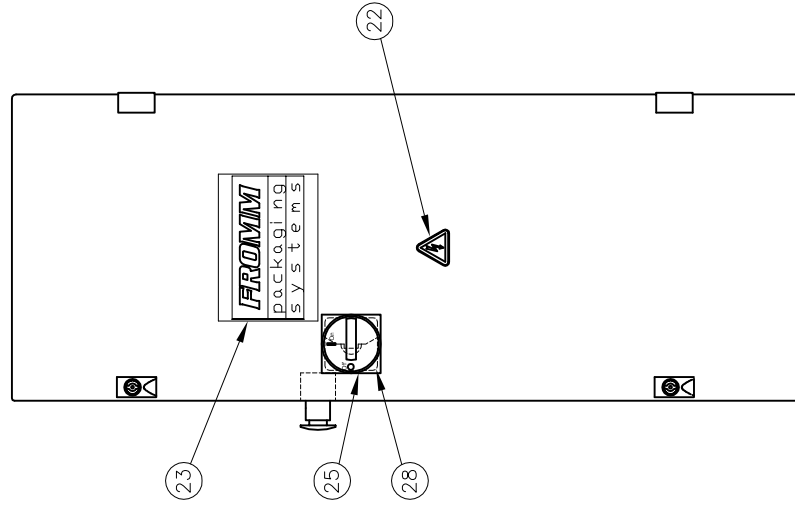
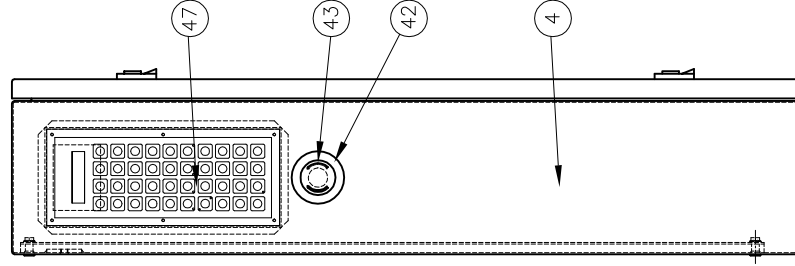
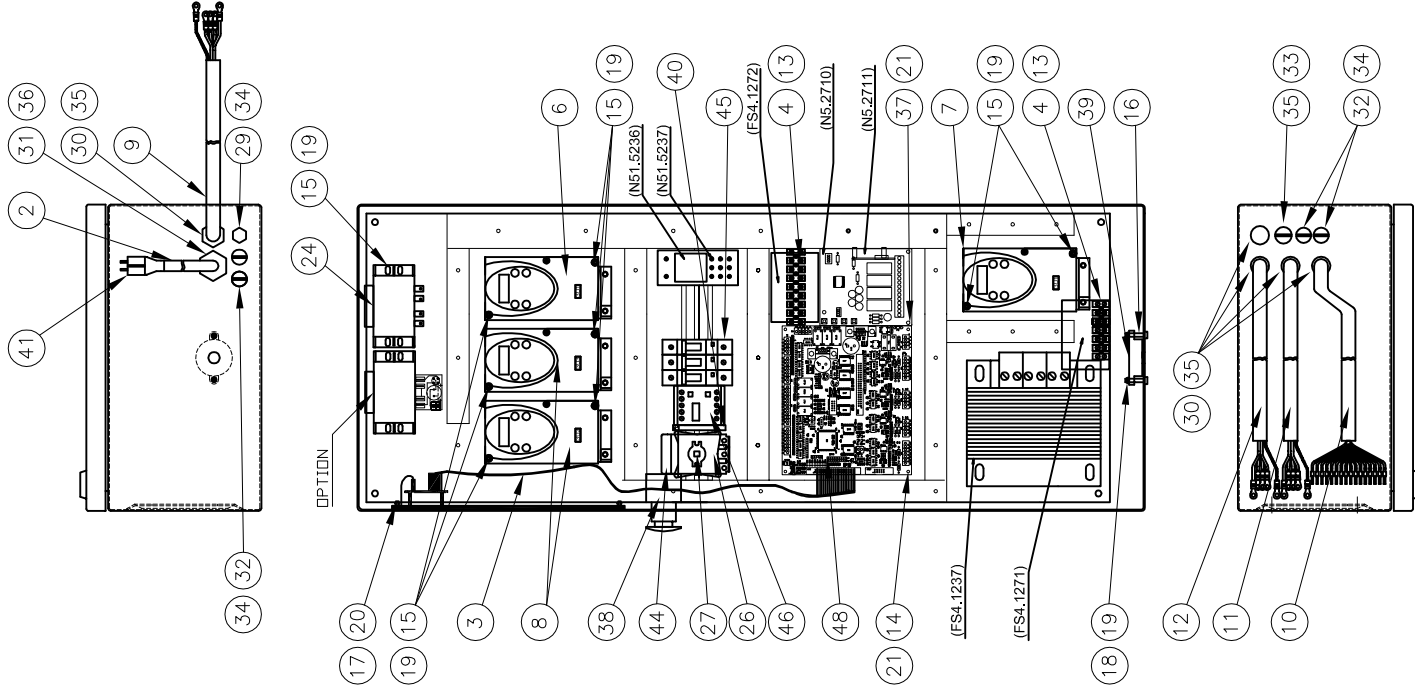
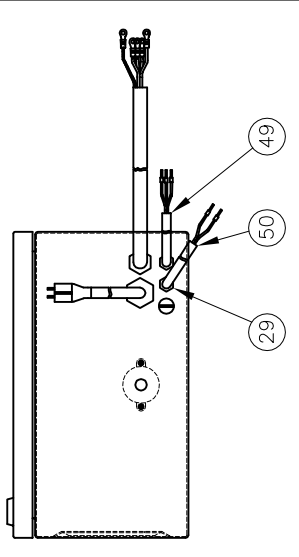
Part no.	RIF	Description	Specification English	Quantity	Maintenance
FS4.1017	1	Roll	ROLL	9	<b>A-C</b>
FS4.1412	2	Group	PAINTED BASE UNIT D. 1650 FRONT BLUE RAL 5010	1	
FS4.1437	3	Group	SHAT-PINION 1/2"X5/16" Z=23 GROUP	1	<b>D-E</b>
FS4.1440	4	Pinion	PINION 1/2"X5/16" Z=20	3	<b>E</b>
FS4.1441	5	Bracket	BRACKET	1	
FS4.1444	6	Bracket	BRACKET	2	
FS4.1449	7	Spring	POLIURETANIC SPRING D.E.=25 D.I.=10.5 L=20	2	<b>C</b>
FS4.1450	8	Wheel	RUBBERED WHEEL D=110 FE37	2	<b>C</b>
FS4.1451	9	Pinion	PINION 1/2"X5/16" Z=24	2	<b>E</b>
FS4.1472	10	Disk	PAINTED DISK D.1650 ROLL CON. YELLOW RAL 1021	1	<b>A</b>
FS4.1461	11	Plate	PLATE	1	<b>C</b>
FS4.1462	12	Wire steel	INOX AISI 302 WIRE STEEL STOP ROLL	9	
FS4.1463	13	Bracket	BRACKET	1	
FS4.1464	14	Support	REFLECTOR CARTER	1	
FS4.1467	15	Support	PHOTOCELL CARTER	1	
FS4.1469	16	Bracket	PHOTOCELL BRACKET	1	
FS4.1470	17	Access	TRANSPALLET ACCESS	1	
FS4.1471	18	Cover	PAINTED CLO. BASE D.1650 FRONT BLUE RAL 5010	1	
N1.1511	19	Bolt	HEXAGONAL HEAD BOLT M10x30 ZINCED DIN 933	4	<b>B</b>
N1.1523	20	Screw	HEXAGONAL HEAD SCREW M6x25 ZINCED DIN 933	4	
N1.1546	21	Bolt	HEXAGONAL HEAD BOLT M10x25 ZINCED DIN 933	6	<b>B</b>
N1.1548	22	Bolt	HEXAGONAL HEAD BOLT M10x20 ZINCED DIN 933	2	<b>B</b>
N1.1568	23	Bolt	HEXAGONAL HEAD BOLT M10x50 ZINCED DIN 933	1	
N1.1572	24	Bolt	HEXAGONAL HEAD BOLT M10x40 ZINCED DIN 931	2	<b>E</b>
N1.1614	25	Screw	CYLINDRICAL HEAD SCREW M3x16 ZINCED DIN 85A	2	<b>B</b>
N1.1911	26	Screw	PHILIPS HEAD SCREW M4x8 ZINCED	2	<b>B</b>
N1.2168	27	Bolt	SOCKET CTRS. HD BOLT M8x16 ZINCED DIN 7991	6	<b>B - Locktite</b>
N1.2190	28	Bolt	SOCKET CTRS. HD BOLT M8x60 ZINCED DIN 7991	4	
N1.5108	29	Nut	NUT CL.8 PG M10 DIN 934	3	
N1.6114	30	Washer	PLAIN WASHER M6 6,4x12x1,6 ZINCED DIN 125A	8	
N1.6161	31	Washer	PLAIN WASHER M10 10,5x20x2 ZINCED DIN 125A	6	
N1.6195	32	Washer	PLAIN WASHER M8 8,5x32x2,5 ZINCED DIN 125A	1	
N1.6215	33	Washer	WASHER GROWER M8 ZINCED DIN 127 -B-	1	
N11.1121	34	Screw	CYLINDRICAL HEAD SCREW M6x10 ZINCED DIN 912	8	<b>B</b>
N11.1141	35	Bolt	CYLINDRICAL HEAD BOLT M8x20 ZINCED DIN 912	1	
N11.1162	36	Screw	CYLINDRICAL HEAD SCREW M4x10 ZINCED DIN 912	2	<b>B</b>
N2.1105	37	Seeger	ELASTIC RING TYPE A DIN 471 D.25	4	
N2.1108	38	Seeger	ELASTIC RING TYPE A DIN 471 D.20	3	
N2.3308	39	Key	KEY 8x7x40 DIN 6885	2	
N3.1177	40	Ball bearing	BALL BEARING 20x42x12 6004 2RSL	6	<b>A-D</b>
N3.4624	41	Support	SWINGING BRACKET UCF 205	1	
N31.1141	42	Ball bearing	BALL BEARING 25x47x16 63005 2RS1	4	<b>A-D</b>
N4.7357	43	Chain	CHAIN 1/2"x5/16" 285 LINK ISO 08B-1	1	<b>B-D</b>
N4.7413	44	Link	SPRING CLIP (LINK) 1/2"X5/16" ISO 08B-1	1	
N4.7417	45	End-link	LINK WITH SPLIT PIN C126 N.13 ISO 08B-1	1	

**FS4.0160 Horse Shoe Ø1650mm Roll Container, Machine Version 03**

<b>Part no.</b>	<b>RIF Description</b>	<b>Specification English</b>	<b>Quantity</b>	<b>Maintenance</b>
N5.1198	46 Gearbox	GEARBOX SW063 I=10 ENG. 80B 4POLES 0.55kW B14	1	<b>E</b>
N5.2643	47 Photocell	PHOTOCELL REFLECTING 90°	1	<b>E - A</b>
N5.2644	48 Reflector	REFLECTING RL 112-G 19X73 MD	1	<b>A</b>
N5.2667	49 Photocell	PHOTOCELL REFLECTING E3F2-R2BA-P1-E	1	<b>E</b>
N5.2668	50 Reflector	REFLECTING E39-R1	1	<b>A</b>
N5.3134	51 Cable	CABLE FOR PHOTOCELL OR PROXIMITY L.5M D12	1	
N5.3172	52 Cable	CABLE FOR PHOTOCELL OR PROXIMITY L.2M D12 90°	1	
FS4.1059	53 Carter	MOTOR CARTER BLUE RAL 5010	1	
FS4.1080	54 Group	BRACKET-RIVET GROUP	4	
FS4.1248	55 Tube	PVC TUBE	1	
N1.1222	56 Screw	BUTTON HEAD SCREW ISO 7380 - M6 x 20	4	
N1.1573	57 Screw	HEXAGONAL HEAD BOLT M6x12 ZINCED DIN 933	4	
N1.6163	58 Washer	PLAIN WASHER M6 6,4x12x1,6 ZINCED DIN 125A	8	



DIFFERENCE FROMM ELEC. CABINET STANDARD



FS4.0129/FS4.0130/  
FS40.131/FS4.0145.V01.02

**FS4.0129/FS4.0130/FS4.0131/FS4.0145 Electrical Cabinet (FS400/FS401/FS402/FS403/Horse shoe)**

Part no.	RIF	Description	Specification English	Quantity	Maintenance
ELS.1030	1	Electri. drawing	ELECTRICAL DRAWING FS400/FS401	1	E
FS4.1208	2	Cable	POWER CABLE	1	
FS4.1231	3	Cable	FLAT CABLE	1	
FS4.1238	4	Clamp	CLAMP	1	
FS4.1239	5	Cabinet	COMPLETE ELECTRICAL CABINET	1	
FS4.1244	6	Inverter	CARRIAGE INVERTER (N5.5476 without parameters)	1	E
FS4.1245	7	Inverter	TABLE INVERTER (N5.5483 without parameters)	1	E
FS4.1246	8	Inverter	FILM INVERTER (N5.5476 without parameters)	1	E
FS4.1249	9	Cable	PROXIMITY TABLE CABLE	1	
FS4.1250	10	Cable	BOX FILM CABLE	1	
FS4.1251	11	Cable	MOTOR M2 CABLE	1	
FS4.1252	12	Cable	MOTOR M1 CABLE	1	
N1.1714	13	Screw	CYLINDRICAL HEAD SCREW 2.9x16 ZINCED DIN 7981	4	
N1.1915	14	Screw	PHILIPS HEAD SCREW M4x8 ZINCED DIN 7985A	4	
N1.1921	15	Screw	PHILIPS HEAD SCREW M4x10 ZINCED DIN 7985A	12	
N1.1937	16	Screw	PHILIPS HEAD SCREW M4x30 ZINCED DIN 7985A	2	
N1.5120	17	Nut	NUT CL.8 PG M3 DIN 934	6	
N1.5124	18	Nut	NUT CL.8 PG M4 DIN 934	2	
N1.6115	19	Washer	PLAIN WASHER M4 ZINCED DIN 125A	14	
N1.6154	20	Washer	PLAIN WASHER M3 3,2x9x0,8 ZINCED DIN 9021	6	
N1.6412	21	Washer	WASHER M4 BLACK DIN 6798-A	8	
N4.9192	22	Label	LABEL FOR TENSION 51mm	1	E
N41.9156	23	Label	LABEL 174x24	1	
N5.1439	24	Transformer	TRANSFORMER	1	
N5.2269	25	Plastic	RED PLATIC 60x60	1	E
N5.2271	26	Block	BREAK SWITCH 3P 25A V0	1	
N5.2280	27	Shaft	EXTEND SHAFT VZ17	1	
N5.2281	28	Block	BLOCK DOOR KZ 32	1	E
N5.3329	29	Cable gland	CABLE GLAND PG.7	1	
N5.3332	30	Cable gland	CABLE GLAND PG.13.5	5	
N5.3333	31	Cable gland	CABLE GLAND PG.16	1	
N5.3334	32	Cap	CAP PG.7	4	
N5.3337	33	Cap	CAP PG.13.5	1	
N5.3627	34	Nut	PLASTIC HEX NUT PG.7	5	
N5.3630	35	Nut	PLASTIC HEX NUT PG.13.5	6	
N5.3631	36	Nut	PLASTIC HEX NUT PG.16	1	
N5.3810	37	Spacer	SPACER M4 L=8	4	
N5.5273	38	Switch	AUXILLARY SWITCH	1	
N5.5462	39	Buzzer	BUZZER	1	
N5.6115	40	Terminal	EARTH TERMINAL WPE 4 mm	1	
N51.2120	41	Thorn	THORN 10/16A	1	
N51.2217	42	Label	ROUND YELLOW LABEL D.60	1	
N51.2218	43	Emergency	MUSHROOM PUSH BUTTON	1	E
N51.2219	44	Cover	PROTECTION COVER	1	
N51.5219	45	Breaker	BREAKER	3	E

**FS4.0129/FS4.0130/FS4.0131/FS4.0145 Electrical Cabinet (FS400/FS401/FS402/FS403/Horse shoe)**

Part no.	RIF	Description	Specification English	Quantity	Maintenance
N51.5220	46	Power joint	POWER JOINT 12A 24V 50/60Hz	1	
N51.7111	47	Panel	KEYBOARD+ALPHANUMERIC DISPLAY FS400	1	<b>C</b>
N51.7113	48	Pc Board	MAINBOARD FS400/401	1	

**DIFFERENCE FROMM Electrical Cabinet Standard (ONLY FOR FS4.0130)**

ELS.1031	1	Electri. drawing	ELECTRICAL DRAWING FS402/FS403	1	<b>E</b>
FS4.1204	50	Cable	ZERO POSITION MICRO CABLE	1	
N5.3329	51	Cable gland	CABLE GLAND PG.7	1+3	
N5.3332	30	Cable gland	CABLE GLAND PG.13.5	5+1	
N5.3334	32	Cap	CAP PG.7	1	
N51.5236		Relè	RELE' 3X16A 62.33-24AC FINDER	1	
N51.5237		Clamp	CLAMP BASE 92.03 FINDER	1	
N51.7114	48	Pc Board	MAINBOARD FS402/403	1	

**DIFFERENCE FROMM Electrical Cabinet Standard (ONLY FOR FS4.0131 Horse Shoe)**

FS4.1203	49	Cable	SECURITY PHOTOCELL CABLE	1	
FS4.1204	50	Cable	ZERO POSITION MICRO CABLE	1	
N5.3329	51	Cable gland	CABLE GLAND PG.7	1	

**DIFFERENCE FROMM Electrical Cabinet Standard (ONLY FOR FS4.0145)**

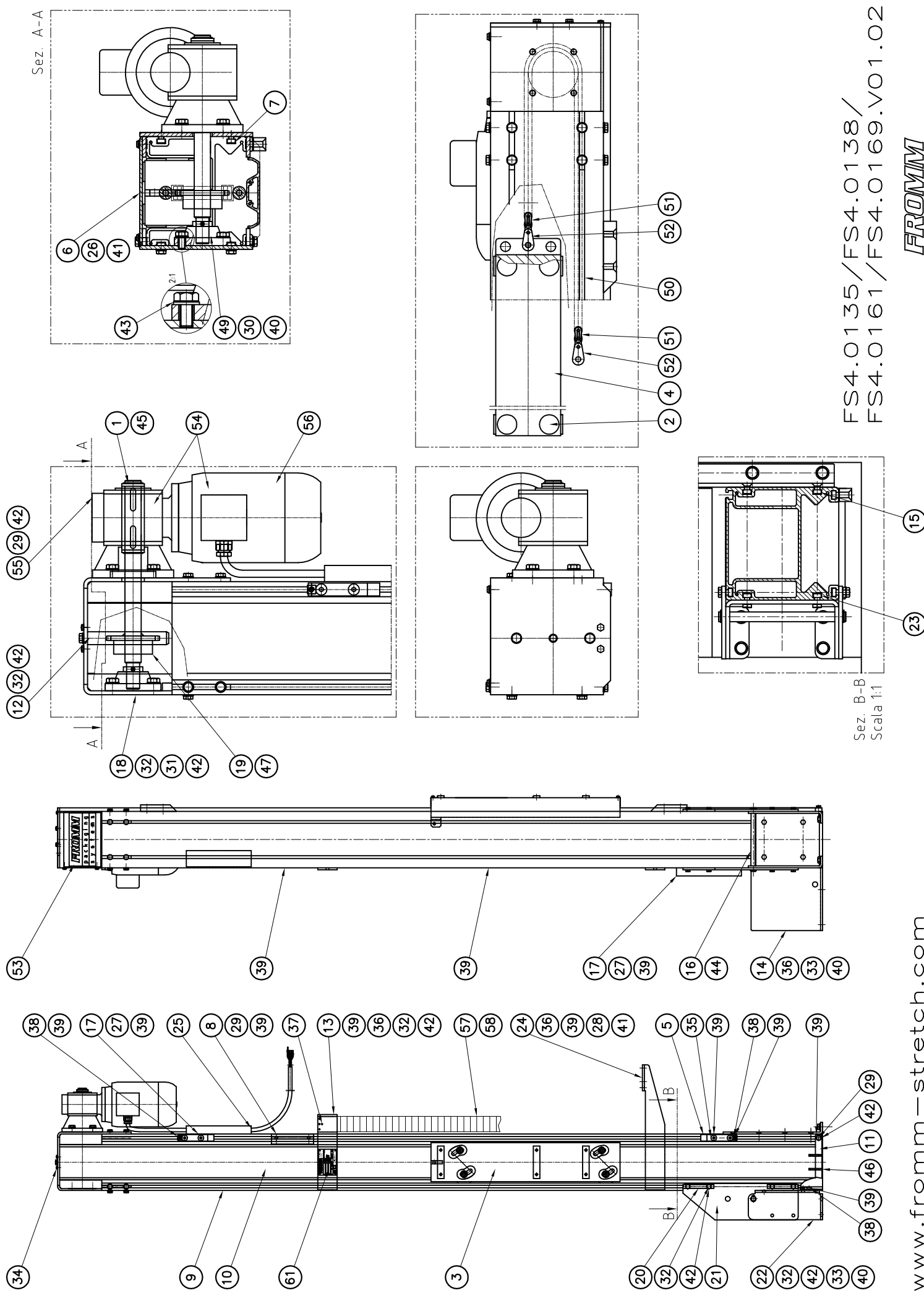
ELS.1031	1	Electri. drawing	ELECTRICAL DRAWING FS402/FS403	1	<b>E</b>
FS4.1203	49	Cable	SECURITY PHOTOCELL CABLE	1	
FS4.1204	50	Cable	ZERO POSITION MICRO CABLE	1	
N5.3329	51	Cable gland	CABLE GLAND PG.7	1+4	
N5.3332	30	Cable gland	CABLE GLAND PG.13.5	5+1	
N5.3334	32	Cap	CAP PG.7	2	
N51.5236		Relè	RELE' 3X16A 62.33-24AC FINDER	1	
N51.5237		Clamp	CLAMP BASE 92.03 FINDER	1	

**OPTION**

FS4.1257		Power	POWER 65V	1	
N1.1915	14	Screw	PHILIPS HEAD SCREW M4x8 ZINCED DIN 7985A	2	
N1.1921	15	Screw	PHILIPS HEAD SCREW M4x10 ZINCED DIN 7985A	2	







Sez. A-A

FS4.0135/FS4.0138/  
FS4.0161/FS4.0169.V01.02

**FROMM**

Sez. B-B  
Scala 1:1

www.fromm-stretch.com

Non smontare  
Modificare

Non smontare  
Non allungare

**FS4.0135/FS4.0138/FS4.0161/FS4.0169 Mast (H.2050/H.2600/H.3200/H.3400mm)**

Part no.	RIF	Description	Specification English	Quantity	Maintenance
FS1.1215	1	Washer	WASHER	2	
FS1.1382	2	Feltrin	FELTRIN D.24/25mm THICKNESS 2.5/3mm	16	
FS3.0112	3	Group	CARRIAGE GROUP	1	E
FS3.1013	4	Peso	WEIGHT SUBASSEMBLY	1	
FS3.1093	5	Block	BLOCK	2	E
FS3.1120	6	Plate	PLATE	1	
FS3.1121	7	Bracket	BRACKET	2	
FS3.1157	8	Stop	STOP	1	
FS3.1203	9	Mast	MAST PROFILE (MAST H.2050mm)	1	
FS3.1400	9	Mast	MAST PROFILE (MAST H.2600mm)	1	
FS3.1205	10	Carter	COVER PROFILE (MAST H.2050mm)	1	
FS3.1399	10	Carter	COVER PROFILE (MAST H.2600mm)	1	
FS3.1282	11	Support	BRACKET	1	
FS3.1285	12	Shaft	SHAFT	2	
FS4.1004	13	Bracket	BRACKET ELECTRICAL CABINET	1	
FS4.1008	14	Bracket	BRACKET	1	
FS4.1010	15	Bracket	BRACKET	2	
FS4.1012	16	Shaft	SHAFT	1	
FS4.1057	17	Cable pipe	CABLE PIPE (MAST H.2050mm)	2	
FS4.1058	17	Cable pipe	CABLE PIPE (MAST H.2600mm)	1	
FS4.1063	18	Group	BRACKET SUBASSEMBLY	1	
FS4.1065	19	Shaft	SHAFT WITH PINION	1	E
FS4.1128	20	Bracket	BRACKET	4	
FS4.1129	21	Plate	PLATE	2	
FS4.1130	22	Support	SUPPORT MAST	1	
FS4.1131	23	Bracket	BRACKET	2	
FS4.1152	24	Bracket	BRACKET ELECTRICAL CABINET	1	
FS4.1254	25	Cable	MOTOR CABLE CARRIAGE (MAST H.2050mm)	1	
FS4.1256	25	Cable	MOTOR CABLE CARRIAGE (MAST H.2600/3200/3400)	1	
N1.1219	26	Screw	BUTTON HEAD SCREW M6x12 GALVANIZED ISO 7380	4	
N1.1422	27	Bolt	HEXAGON HEAD BOLT M8x12 GALVANIZED DIN 933	4	

**FS4.0135/FS4.0138/FS4.0161/FS4.0169 Mast (H.2050/H.2600/H.3200/H.3400mm)**

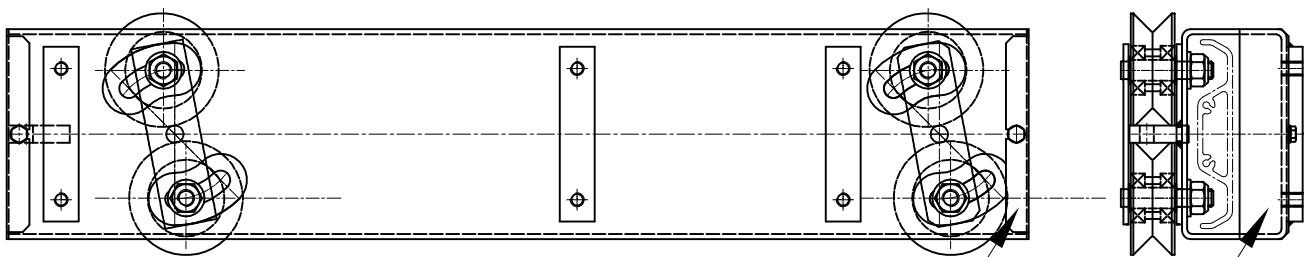
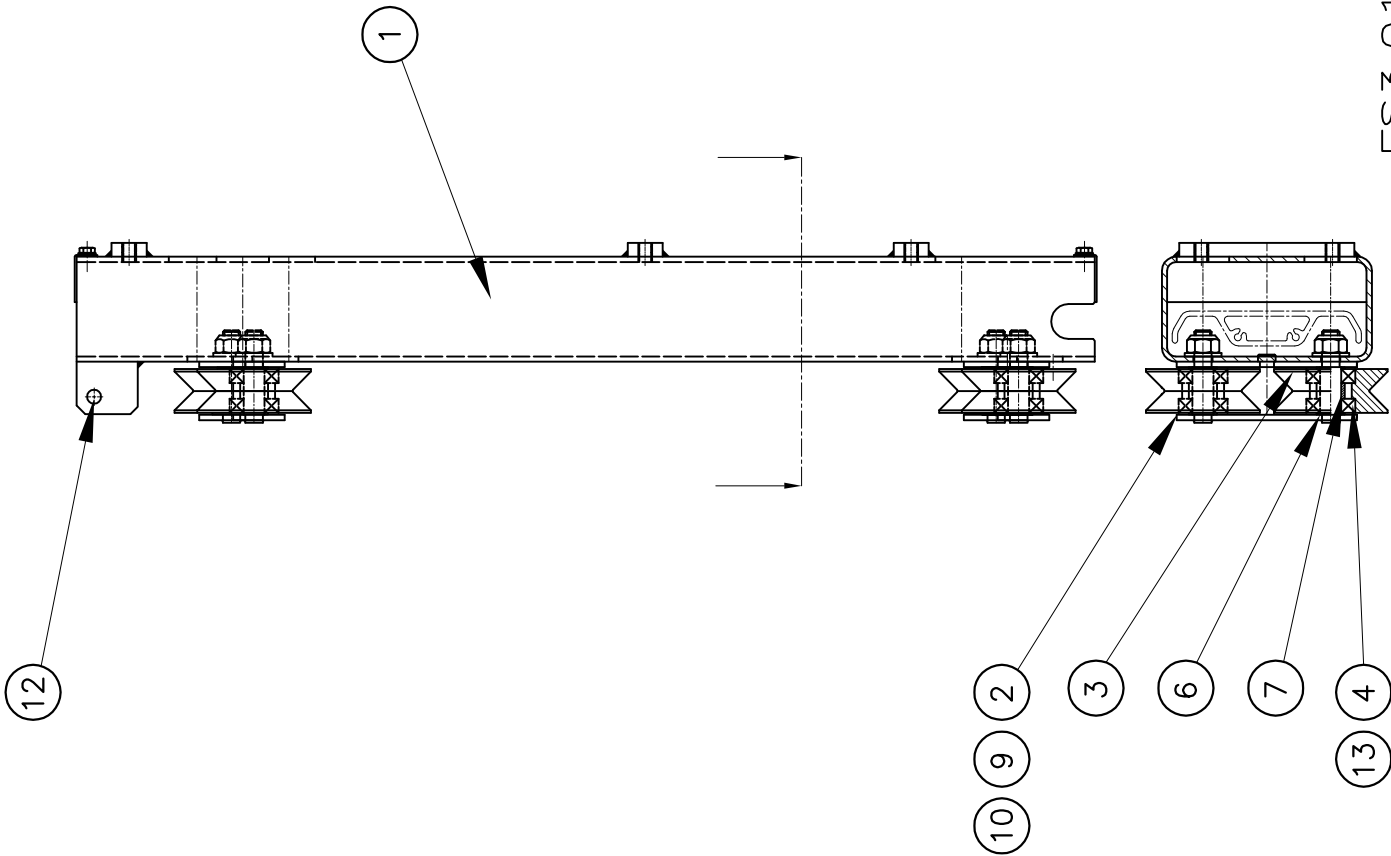
Part no.	RIF	Description	Specification English	Quantity	Maintenance
N1.1502	28	Screw	HEXAGON HEAD SCREW M6x10 GALVANIZED DIN 933	4	
N1.1524	29	Bolt	HEXAGON HEAD BOLT M8x20 GALVANIZED DIN 933	8	
N1.1548	30	Bolt	HEXAGON HEAD BOLT M10x20 GALVANIZED DIN 933	4	
N1.1586	31	Bolt	HEXAGON HEAD BOLT M8x12 GALVANIZED DIN 933	8	
N1.1589	32	Bolt	HEXAGON HEAD BOLT M8x18 GALVANIZED DIN 933	23	<b>B</b>
N1.1592	33	Bolt	HEXAGON HEAD BOLT M10x22 GALVANIZED DIN 933	8	<b>B</b>
N1.1703	34	Screw	SCREW D.4,8x19 GALVANIZED DIN7971	2	
N1.2160	35	Bolt	SOCKET CTRS. HD BOLT M8x30 GALVAN. DIN 799	4	
N1.2168	36	Bolt	SOCKET CTRS. HD BOLT M8x16 GALVAN. DIN 799	14	
N1.2223	37	Screw	PHILIPS HEAD SCREW M3x6 GALVANIZED DIN 965	8	
N1.3134	38	Bolt	SOCKET HEAD SET BOLT M8x10 GALVAN. DIN 913	4	
N1.5925	39	Nut	NUT CL.6 M8 GALVANIZED DIN 557	25	
N1.6161	40	Washer	PLAIN WASHER M10 10,5x20x2 GALVANIZED DIN 125A	12	
N1.6163	41	Washer	PLAIN WASHER M6 6,4x12x1,6 GALVANIZED DIN 125A	8	
N1.6164	42	Washer	PLAIN WASHER M8 8,4x16x1,6 GALVANIZED DIN 125A	33	
N1.6410	43	Washer	LOCK WASHER M10 10,5x18x0,9 GALVAN. DIN 6798J	4	
N2.1103	44	Seeger	ELASTIC RING TYPE A D.15 DIN 471	2	
N2.1105	45	Seeger	ELASTIC RING TYPE A D.25 DIN 471	2	
N2.2475	46	Elastic thorn	ELASTIC THORN M5X40 DIN 1481 BLACK	2	
N2.3355	47	Key	KEY 8x7x35 INOX DIN 6885A	2	
N2.4902	48	Rivet	CYLINDRICAL HEAD CAP RIVET UNI 7346 D.1,85x4,76	4	
N3.4614	49	Support	Y-BEARING HOUSING D.20 FY20TF SKF SNUCF204	1	
N4.7344	50	Chain	CHAIN 1/2"X5/16" 143 LINKS (MAST H.2050mm)	1	<b>B-D</b>
N4.7345	50	Chain	CHAIN 1/2"X5/16" 185 LINKS (MAST H.2600mm)	1	<b>B-D</b>
N4.7413	51	Link	SPRING CLIP (LINK) 1/2"X5/16" ISO 08B-1	2	<b>E</b>
N4.7414	52	End-link	END-LINK L=11,4 M=19,05 N=8 P=18,3 Q=24	2	
N41.9156	53	Label	LABEL 174x24	1	
N5.1183	54	Motor/gear	GEARBOX IEC71 0.37kW 4 POLES B14	1	<b>B-C</b>
N4.7622	55	Gear	GEAR MRS 50 FA 1:56 IEC71 B14 (10 105) AC25	1	<b>B-C</b>
N5.1169	56	Motor	MOTOR 0.37kW 4 POLES B14	1	<b>B-C</b>
N5.3726	57	Cable chain	CABLE CHAIN L=1900 95 LINKS	1	<b>E</b>
N5.3727	58	Connection	BRACKET SET CABLE CHAIN	2	
FS4.1184	61	Label	LABEL REGISTER FS	1	<b>C</b>
<b>DIFFERENCE FROMM H.2050 (ONLY FOR FS4.0161 Mast H.3200mm)</b>					
PS4.0109	9	Mast	MAST PROFILE (MAST H.3200mm)	1	
PS4.0110	10	Carter	COVER PROFILE (MAST H.3200mm)	1	
FS4.1256	25	Cable	MOTOR CABLE CARRIAGE (MAST H.2600/3200/3400)	1	
N1.1422	27	Bolt	HEXAGON HEAD BOLT M8x12 GALVANIZED DIN 933	4+2	<b>B</b>
N1.1589	32	Bolt	HEXAGON HEAD BOLT M8x18 GALVANIZED DIN 933	19	<b>B</b>
N1.6163	41	Washer	PLAIN WASHER M6 6,4x12x1,6 GALVANIZED DIN 125A	4	

**FS4.0135/FS4.0138/FS4.0161/FS4.0169 Mast (H.2050/H.2600/H.3200/H.3400mm)**

Part no.	RIF Description	Specification English	Quantity	Maintenance
N4.7344	50 Chain	CHAIN 1/2"X5/16" 143 LINKS (MAST H.2050mm)	1	<b>B-D</b>
N4.7345	50 Chain	CHAIN 1/2"X5/16" 185 LINKS (MAST H.2600mm)	1	<b>B-D</b>
N4.7413	51 Link	SPRING CLIP (LINK) 1/2"X5/16" ISO 08B-1	2+1	<b>E</b>

**DIFFERENCE FROMM H.2050 (ONLY FOR FS4.0169 Mast H.3400mm)**

FS4.1408	59 Disk	DISK D.100	2	
FS4.1522	9 Mast	MAST PROFILE (MAST H.3400mm)	1	
FS4.1523	10 Carter	COVER PROFILE (MAST H.3400mm)	1	
FS4.1256	25 Cable	MOTOR CABLE CARRIAGE (MAST H.2600/3200/3400)	1	
N1.1422	27 Bolt	HEXAGON HEAD BOLT M8x12 GALVANIZED DIN 933	4+2	<b>B</b>
N1.1589	32 Bolt	HEXAGON HEAD BOLT M8x18 GALVANIZED DIN 933	19	<b>B</b>
N1.4202	60 Cap	CAP 10/15-23 -FISHER-	4	
N1.6163	41 Washer	PLAIN WASHER M6 6,4x12x1,6 GALVANIZED DIN 125A	4	
N4.7344	50 Chain	CHAIN 1/2"X5/16" 143 LINKS (MAST H.2050mm)	1	<b>B-D</b>
N4.7345	50 Chain	CHAIN 1/2"X5/16" 185 LINKS (MAST H.2600mm)	1	<b>B-D</b>
N4.7413	51 Link	SPRING CLIP (LINK) 1/2"X5/16" ISO 08B-1	2+1	<b>E</b>
N5.3726	57 Cable chain	CABLE CHAIN L=1900 95 LINKS	1+2	<b>E</b>



Alle Angaben  
sind ohne Gewähr

Alle Angaben  
sind ohne Gewähr

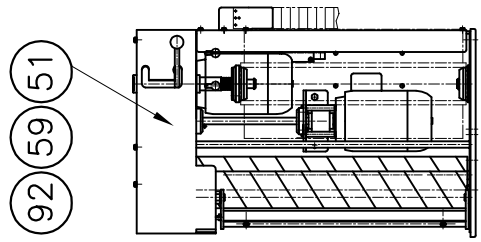
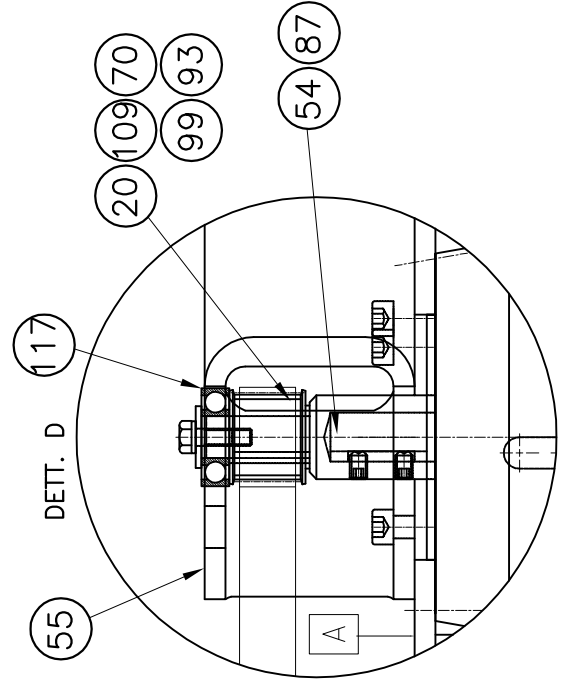
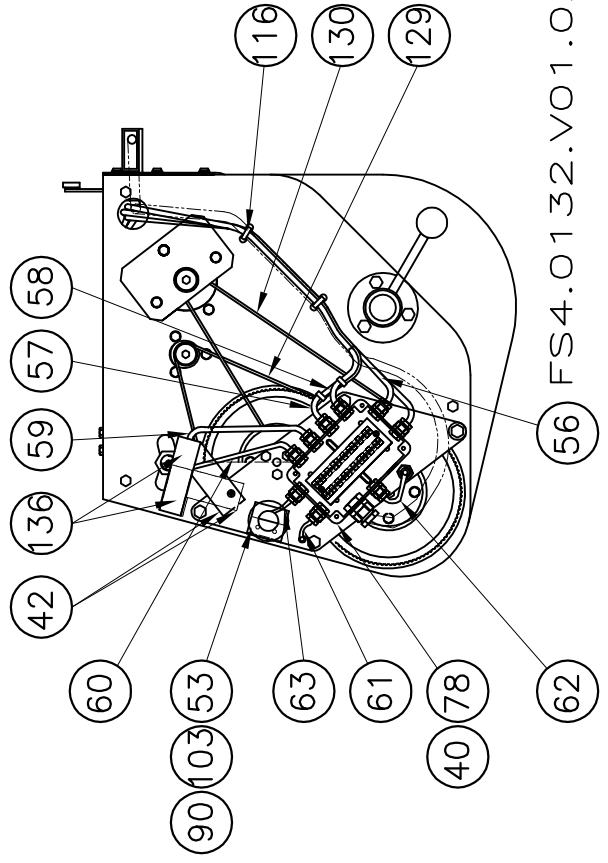
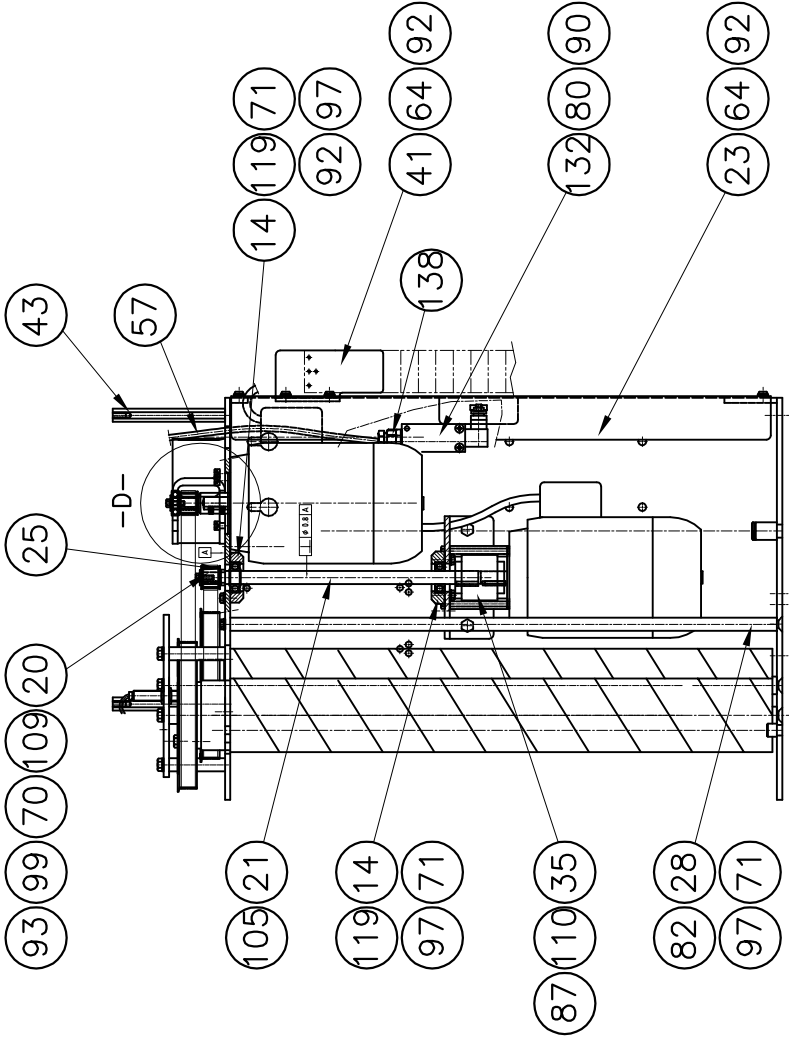
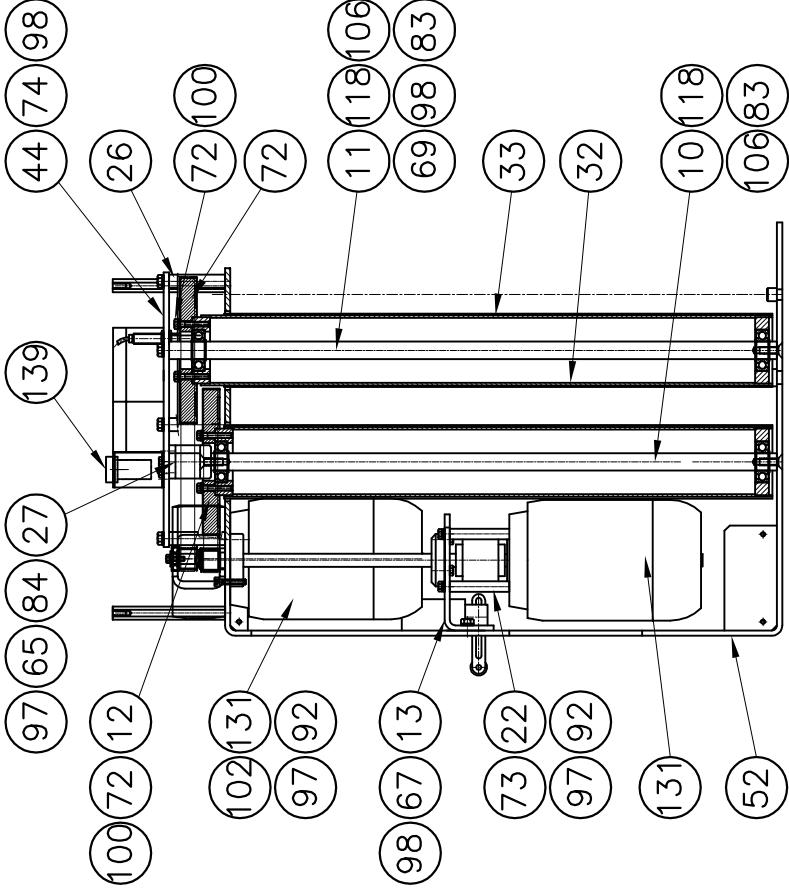
FS3.01 12.V01.02

*FROMM*

www.fromm-stretch.com

**FS3.0112 Carriage group for stretch group**

<b>Part no.</b>	<b>RIF</b>	<b>Description</b>	<b>Specification English</b>	<b>Quantity</b>	<b>Maintenance</b>
FS3.1007	1	Tube	CARRIAGE SUPPORT GROUP	1	
FS3.1029	2	Bracket	BRACKET SUBASSEMBLY	2	
FS3.1030	3	Bracket	BRACKET SUBASSEMBLY	2	
FS3.1032	4	Wheel	WHEEL	4	<b>A</b>
FS3.1295	5	Cover	COVER	2	
FS3.1312	6	Washer	WASHER	8	
FS3.1313	7	Distance piece	DISTANCE PIECE	4	
N1.1593	8	Screw	HEXAGON HEAD SCREW M5x10 DIN 933 ZINCED	2	<b>B</b>
N1.5306	9	Nut	NUT M10 DIN 985	4	
N1.6161	10	Washer	PLAIN WASHER M10 10,5x20x2 DIN 125A ZINCED	4	
N1.6167	11	Washer	PLAIN WASHER M5 5,3x10x1 DIN 125A ZINCED	2	
N1.7319	12	Bolt	HEXAGON HEAD BOLT M8x20 DIN 6921ZN YELLOW	2	<b>B</b>
N3.1179	13	Ball Bearing	BALLBEARING 12x28x8 6001 RS1	8	<b>A-D</b>

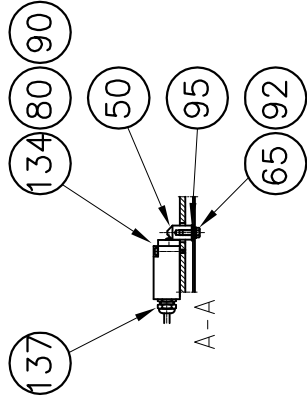
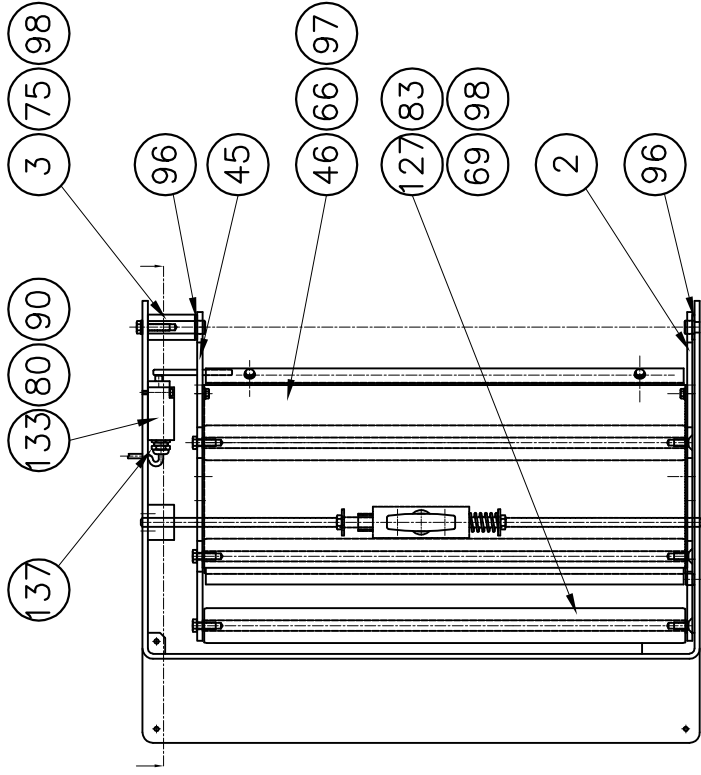
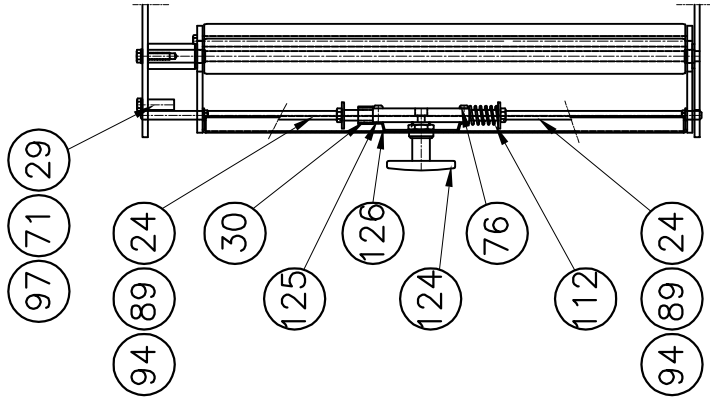


FS4.O132.VO1.02

FROMM

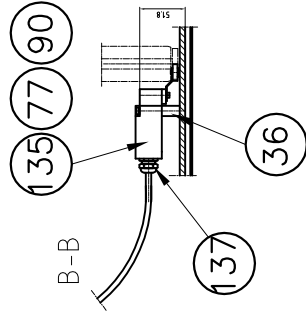
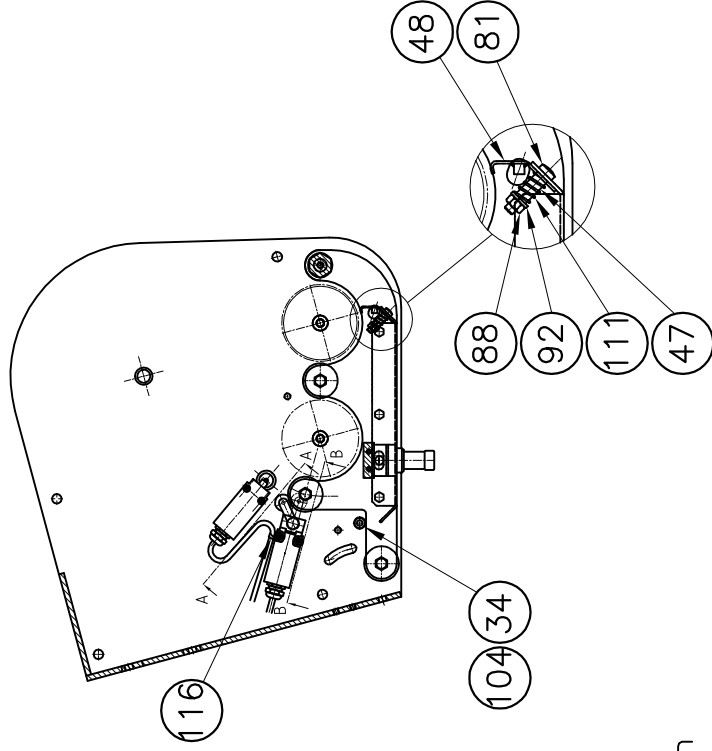
www.fromm-stretch.com



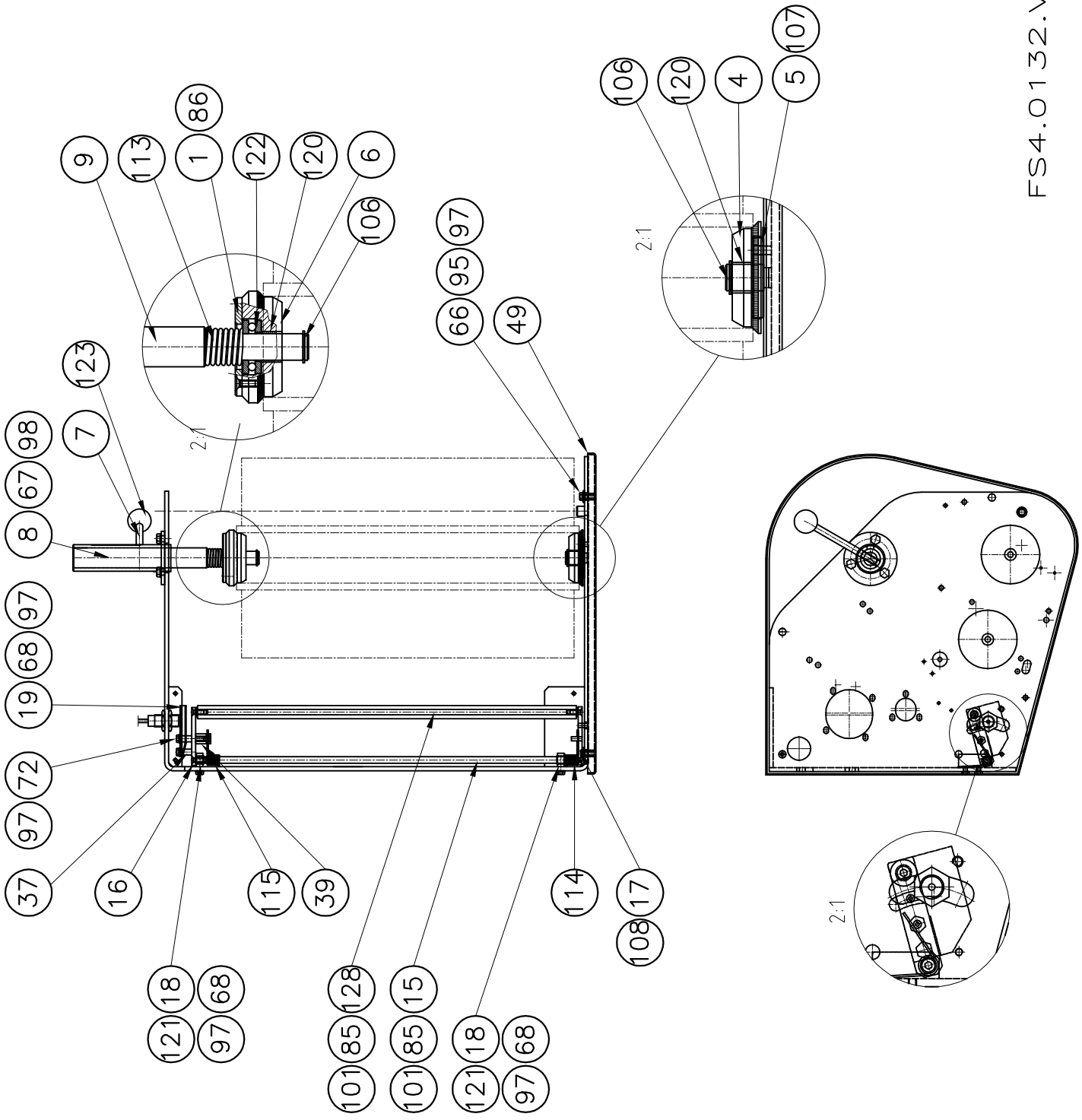


Alle Angaben  
sind Richtwerte.

Alle Angaben  
sind Richtwerte.



FS4.0132.V01.02



FS4.0132.V01.02

FROMM

www.fromm-stretch.com

Alle Angaben  
sind ohne Gewähr

Alle Angaben  
sind ohne Gewähr

**FS4.0132 Stretch unit**

Part no.	RIF	Description	Specification English	Quantity	Maintenance
FS1.1223	1	Flange	FLANGE	1	
FS3.1056	2	Bracket	BRACKET	1	
FS3.1058	3	Shaft	SHAFT	1	
FS3.1059	4	Flange	FLANGE	1	
FS3.1060	5	Disk	DISK	1	A
FS3.1061	6	Ring	RING	1	
FS3.1062	7	Pin	PIN	1	
FS3.1063	8	Group	BRACKET SUBASSEMBLY	1	E
FS3.1064	9	Shaft	SHAFT	1	
FS3.1068	10	Shaft	SHAFT	1	
FS3.1069	11	Shaft	SHAFT	1	
FS3.1070	12	Wheel	BELT WHEEL	2	C
FS3.1072	13	Bracket	BRACKET FOR ELECTRIC MOTOR	1	
FS3.1073	14	Flange	BALL BEARING HOUSING	2	E
FS3.1075	15	Shaft	SHAFT	1	
FS3.1076	16	Plate	PLATE	1	
FS3.1077	17	Plate	PLATE	1	
FS3.1078	18	Plate	PLATE	2	
FS3.1079	19	Plate	PLATE	1	
FS3.1080	20	Wheel	BELT WHEEL	2	C
FS3.1083	21	Shaft	SHAFT FOR ELECTRIC MOTOR	1	C
FS3.1086	22	Distance	DISTANCE PIECE	4	
FS3.1087	23	Carter	CARTER	1	
FS3.1090	24	Shaft	SHAFT	2	
FS3.1107	25	Distance	DISTANCE PIECE	1	
FS3.1213	26	Distance	DISTANCE PIECE	4	
FS3.1214	27	Pin	PIN	1	
FS3.1224	28	Shaft	SHAFT	1	
FS3.1303	29	Block	BLOCK	1	
FS3.1305	30	Distance	DISTANCE PIECE	1	
FS3.1312	31	Washer	WASHER D.12x16x1 GALVANIZED	1	
FS3.1316	32	Roll	ROLL	1	C
FS3.1317	33	Roll	ROLL	1	C
FS3.1384	34	Distance	DISTANCE PIECE	1	
FS3.1385	35	Coupling	COUPLING FOR ELECTRICAL MOTOR	1	E
FS3.1393	36	Distance	DISTANCE PIECE	2	
FS3.1411	37	Distance	DISTANCE PIECE	2	
FS3.1430	38	Label	LABEL FILM SPOOL	1	C
FS3.1433	39	Block	BLOCK	1	
FS4.0144	40	Group	ELECTRICAL BOX GROUP	1	E
FS4.1043	41	Bracket	BRACKET FOR CABLE CHAIN	1	
FS4.1044	42	Bracket	BRACKET	1	
FS4.1045	42	Bracket	PHOTOCELL BRACKET	1	
FS4.1048	43	Distance	DISTANCE PIECE	3	
FS4.1049	44	Plate	PLATE	1	

**FS4.0132 Stretch unit**

Part no.	RIF Description	Specification English	Quantity	Maintenance
FS4.1051	45 Bracket	BRACKET	1	
FS4.1052	46 Door	DOOR	1	
FS4.1053	47 Spacer	SPACER	2	<b>C</b>
FS4.1083	48 Cover	PROTECTION COVER	1	
FS4.1084	49 Group	WELDED SAFETY PLATE GROUP	1	<b>E</b>
FS4.1088	50 Pin	PIN FOR SENSOR	1	<b>E</b>
FS4.1137	51 Carter	CARTER	1	
FS4.1138	52 Group	WELDED SUPPORT GROUP	1	
FS4.1140	53 Bracket	BRACKET	1	
FS4.1148	54 Shaft	SHAFT	1	
FS4.1195	55 Bracket	BRACKET	1	
FS4.1216	56 Cable	CABLE	1	
FS4.1217	57 Cable	LIMITSWITCH CABLE	1	
FS4.1218	58 Cable	CABLE	1	
FS4.1219	59 Cable	CABLE FOR PHOTOELECTRIC CELL	1	
FS4.1220	60 Sensor	SENSOR WITH CABLE	1	<b>C</b>
FS4.1221	61 Cable	CABLE FOR SAFETY LIMIT ROLL	1	
FS4.1222	62 Proximity	PROXIMITY SWITCH WITH CABLE	1	<b>C</b>
FS4.1247	63 Cable	BUTTON FEED CABLE	1	<b>C</b>
N1.1219	64 Screw	BUTTON HEAD SCREW ISO 7380 - M6 x 12	11	
N1.1402	65 Screw	HEXAGONAL HEAD SCREW M6x14 ZINCED DIN 933	4	
N1.1502	66 Screw	HEXAGONAL HEAD SCREW M6x10 ZINCED DIN 933	10	
N1.1519	67 Bolt	HEXAGONAL HEAD BOLT M8x14 ZINCED DIN 933	5	
N1.1523	68 Screw	HEXAGONAL HEAD SCREW M6x25 ZINCED DIN 933	5	
N1.1524	69 Bolt	HEXAGONAL HEAD BOLT M8x20 ZINCED DIN 933	4	
N1.1550	70 Screw	HEXAGONAL HEAD SCREW M5x12 ZINCED DIN 933	2	<b>B</b>
N1.1565	71 Screw	HEXAGONAL HEAD SCREW M6x20 ZINCED DIN 933	9	
N1.1566	72 Screw	HEXAGONAL HEAD SCREW M6x35 ZINCED DIN 931	9	<b>B</b>
N1.1569	73 Screw	HEXAGONAL HEAD SCREW M6x90 ZINCED DIN 931	4	
N1.1588	74 Bolt	HEXAGONAL HEAD BOLT M8x80 ZINCED DIN 933	4	
N1.1590	75 Bolt	HEXAGONAL HEAD BOLT M8x22 ZINCED DIN 933	1	
N1.1904	76 Screw	PHILIPS HEAD SCREW M5x20 DIN 7985 ZINCED	2	
N1.1906	77 Screw	PHILIPS HEAD SCREW M4x50 DIN 7985 ZINCED	2	
N1.1910	78 Screw	PHILIPS HEAD SCREW M4x12 DIN 7985 ZINCED	2	<b>B</b>
N1.1921	79 Screw	PHILIPS HEAD SCREW M4x10 DIN 7985 ZINCED	2	
N1.1937	80 Screw	PHILIPS HEAD SCREW M4x30 DIN 7985 ZINCED	6	<b>B</b>
N1.1946	81 Screw	PHILIPS HEAD SCREW M6x30 DIN 7985 ZINCED	2	<b>E</b>
N1.2146	82 Screw	SOCKET CTRS. HD SCREW M6x20 DIN 7991	1	
N1.2147	83 Bolt	SOCKET CTRS. HD BOLT M8x20 DIN 7991	5	
N1.2159	84 Bolt	SOCKET CTRS. HD BOLT M8x25 DIN 7991	1	
N1.2162	85 Screw	SOCKET CTRS. HD SCREW M6x16 DIN 7991	4	
N1.2163	86 Screw	SOCKET CTRS. HD SCREW M5x12 DIN 7991	3	
N1.3112	87 Screw	SOCKET HEAD SET SCREW M5x10 BLACK DIN 913	4	
N1.5102	88 Nut	NUT CL.8 PG M6 DIN 934	2	
N1.5108	89 Nut	NUT CL.8 PG M10 DIN 934	2	

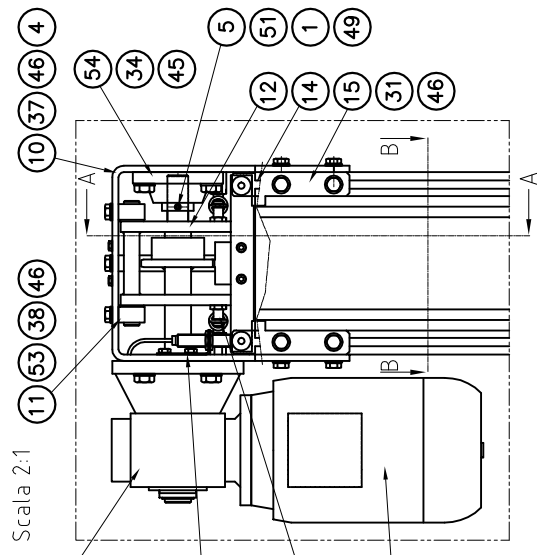
**FS4.0132 Stretch unit**

Part no.	RIF Description	Specification English	Quantity	Maintenance
N1.6115	90 Washer	PLAIN WASHER M4 DIN 125A ZINCED	10	
N1.6161	91 Washer	PLAIN WASHER M10 10,5x20x2 DIN 125A ZINCED	1	
N1.6163	92 Washer	PLAIN WASHER M6 6,4x12x1,6 DIN 125A ZINCED	25	
N1.6166	93 Washer	PLAIN WASHER M5 D.5,3x10 DIN 7349 ZINCED	2	
N1.6168	94 Washer	PLAIN WASHER M10 10,5x30x2,5 DIN 9021 ZINCED	2	
N1.6169	95 Washer	PLAIN WASHER M6 6,4x18x1,6 DIN 9021 ZINCED	5	
N1.6170	96 Washer	PLASTIC WASHER M15 D.15x28x2,5 DIN 125	2	
N1.6204	97 Washer	SPRING LOCK WASHER M6 DIN 127 -B- ZINCED	36	
N1.6215	98 Washer	SPRING LOCK WASHER M8 DIN 127 -B- ZINCED	14	
N1.6217	99 Washer	SPRING LOCK WASHER M5 DIN 127 -B- ZINCED	2	
N1.6409	100 Washer	LOCK WASHER M6 6,4x11x0,7 DIN 6798J ZINCED	8	
N1.6411	101 Washer	SERRATED WASHER M6 6,4x11,8x0,4 DIN 6798	4	
N11.1123	102 Screw	CYLINDRICAL HEAD SCREW M6x30 DIN 912 ZINCED	4	
N11.1162	103 Screw	CYLINDRICAL HEAD SCREW M4x10 DIN 912 ZINCED	2	
N11.1184	104 Screw	CYLINDRICAL HEAD SCREW M8x8 DIN 912 ZINCED	1	
N2.1103	105 Seeger	ELASTIC RING TYPE A D.15 DIN 471	2	
N2.1108	106 Seeger	ELASTIC RING TYPE A D.20 DIN 471	10	
N2.2476	107 Elastic thorn	ELASTIC THORN 6X10 DIN 1481 BLACK	1	
N2.2477	108 Elastic thorn	ELASTIC THORN 6X14 DIN 1481 BLACK	2	
N2.3310	109 Key	KEY 4x4x20 DIN 6885A	2	
N2.3354	110 Key	KEY 5x5x25 DIN 6885A	1	
N2.5161	111 Spring	SPRING 1x12x20 / 6.5	2	E
N2.5256	112 Spring	SPRING	1	E
N2.5257	113 Spring	SPRING	1	E
N2.5829	114 Spring	SPRING	1	E
N2.5830	115 Spring	SPRING	1	E
N2.7201	116 Plastic tie	PLASTIC TIE 170x4.8	6	
N3.1106	117 Ball bearing	BALL BEARING 6001 2RS 12x28x8	1	A-D
N3.1147	118 Ball bearing	BALLBEARING 6204.2RS 20x47x14	4	A-D
N3.1182	119 Ball bearing	BALL BEARING 6202.2RS1 15x35x11	2	A-D
N3.3182	120 Bush	BUSH 20x23x15	2	
N3.3185	121 Bush	BUSH 10x12x12	2	
N3.4702	122 Ball bearing	AXIAL BALL BEARING 20x40x14 51204	1	A-D
N4.1104	123 Ball grip	BALL GRIP D.40 HOLE M10	1	
N4.1914	124 T-handle	T-HANDLE WITHOUT KEY	1	
N4.1915	125 Block	BLOCK WITHOUT KEY 176x36 JOINT POLE M10 R. V.	1	
N4.1916	126 Support	MOUNTING BRACKET A20 WITH SCREW	1	
N4.2204	127 Rullo	ROLLER 1700/12 12RJ 40Z 554 HOLE M8x15	3	A
N4.2205	128 Rullo	ROLLER 1700/L8 8RJ 20J 575 HOLE M6x12	1	A
N4.3207	129 Belt	TIMING BELT 16 AT/5-660	1	C
N4.3209	130 Belt	TIMING BELT 16AT5/990 L=990mm	1	B-C
N5.1169	131 Motor	MOTOR 4 POLES T71B 0,37Kw V400 50Hz FL. B14	2	E
N5.2355	132 Limitswitch	LIMITSWITCH FR1655	1	C
N5.2356	133 Limitswitch	LIMITSWITCH FR501	1	C
N5.2357	134 Limitswitch	LIMITSWITCH FR601-A	1	C

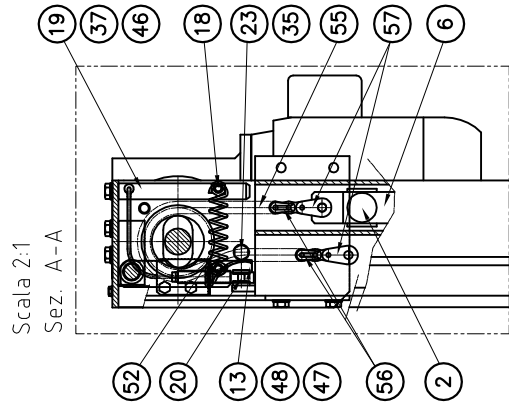
**FS4.0132 Stretch unit**

<b>Part no.</b>	<b>RIF Description</b>	<b>Specification English</b>	<b>Quantity</b>	<b>Maintenance</b>
N5.2358	135 Limitswitch	LIMITSWITCH FR531-A	1	<b>C</b>
N5.2635	136 Photocell	REFLEX PHOTOCCELL RX8/00-1A	1	<b>C</b>
N5.2638	136 Photocell	REFLEX SPE BLACK RX8/00-3B37	1	<b>C</b>
N5.3331	137 Cable gland	CABLE GLAND PG. 11	3	
N5.3332	138 Cable gland	CABLE GLAND PG. 13.5	1	
N51.2293	139 Button	BLACK BUTTON XB7-EA21P	1	<b>E</b>

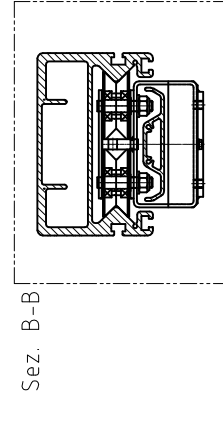
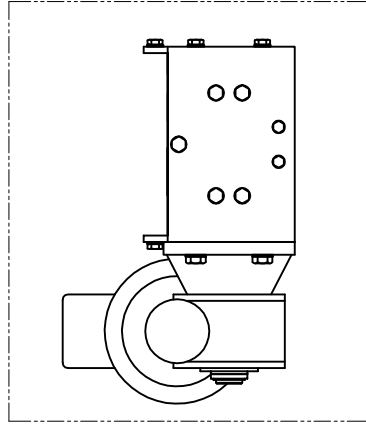




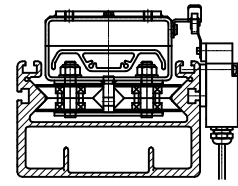
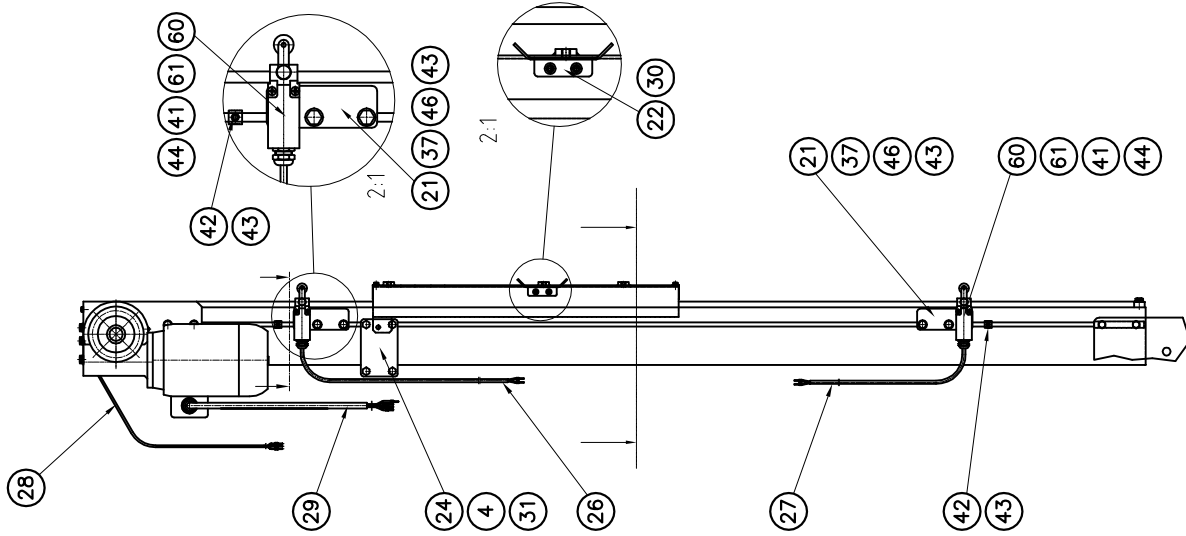
Scala 2:1



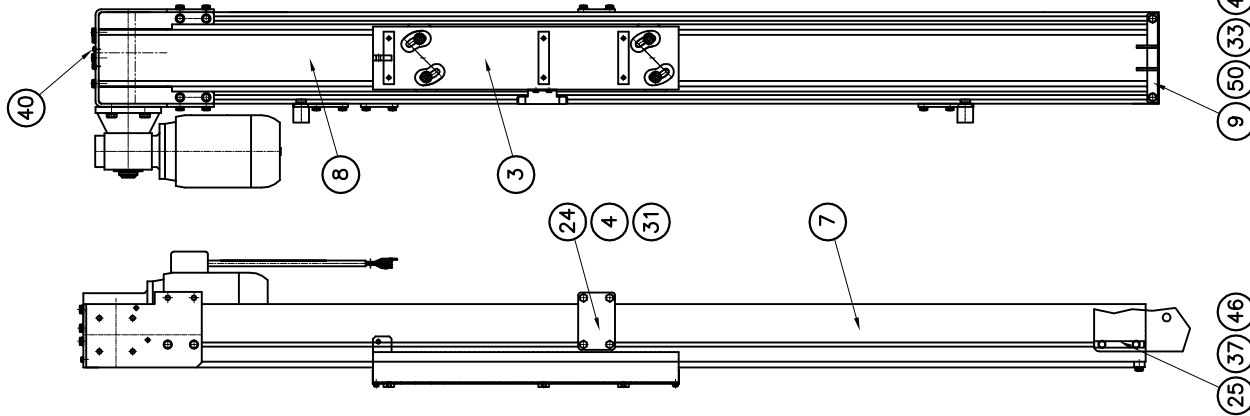
Scala 2:1  
Sez. A-A



Sez. B-B



Scala 1:2.5



Non  
rappre-  
sentare  
modifiche

Non  
rappre-  
sentare  
modifiche



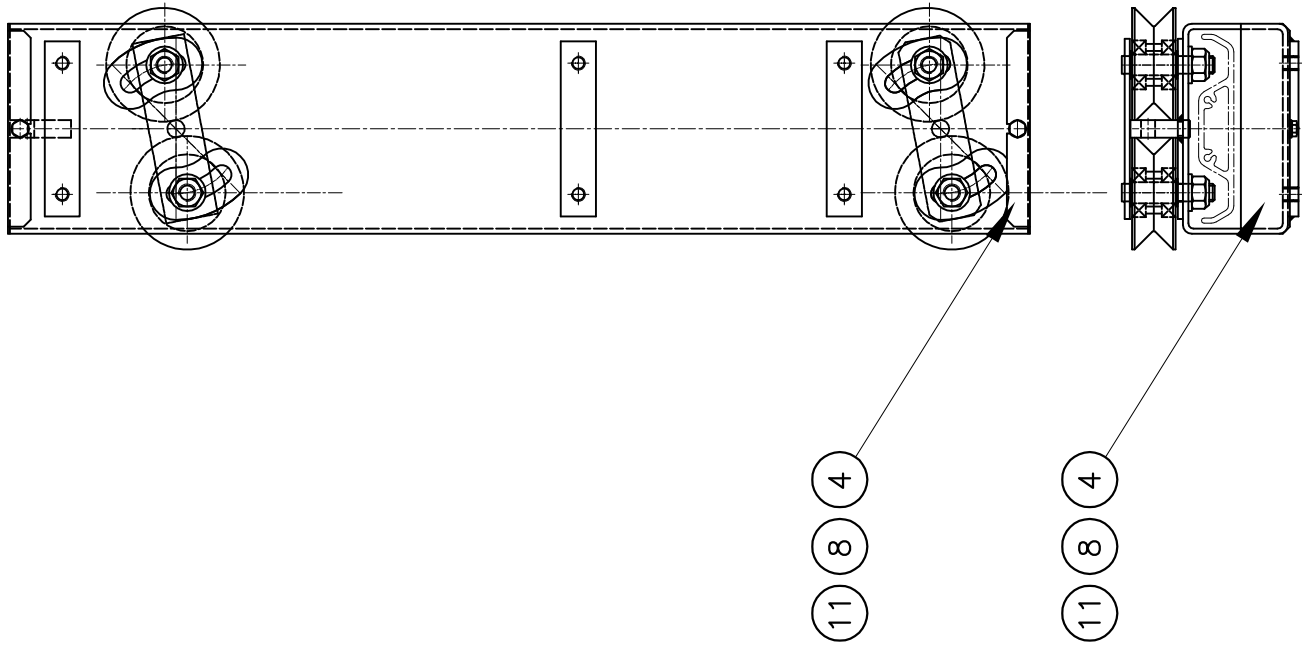
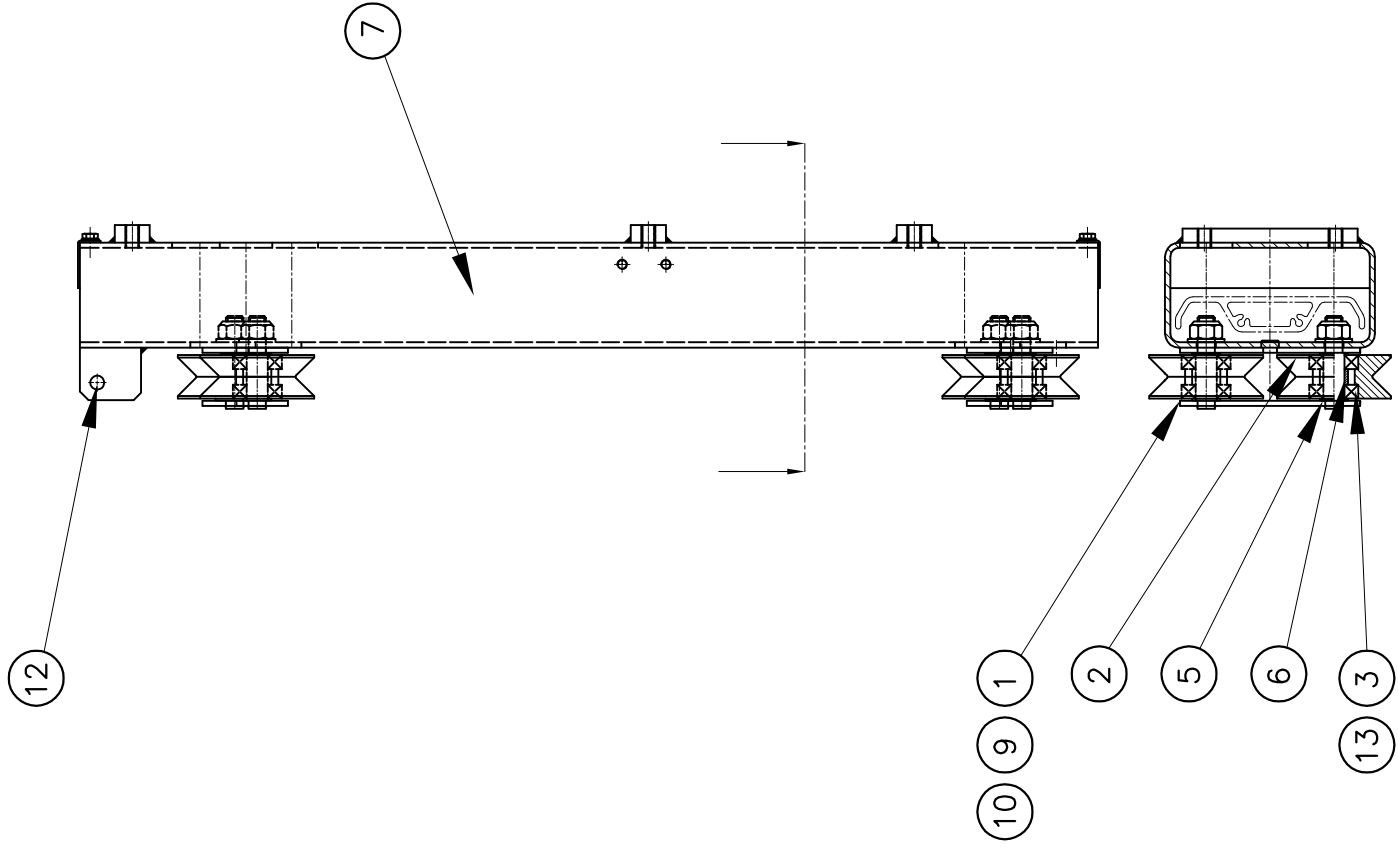
**FS4.0139/FS4.0143 Mast Top-Plate (H.2050/H.2600mm)**

Part no.	RIF	Description	Specification English	Quantity	Maintenance
FS1.1215	1	Washer	WASHER	2	
FS1.1382	2	Feltrin	FELTRIN D.24/25mm THICKNESS 2.5/3mm	8	
FS3.0115	3	Group	CARRIAGE GROUP	1	E
FS3.1121	4	Bracket	BRACKET	6	
FS3.1170	5	Shaft-gear	SHAFT-GEAR	1	
FS3.1202	6	Group	WEIGHT GROUP	1	E
FS3.1204	7	Mast	MAST PROFILE (TOP-PLATE H.2050mm)	1	
FS3.1402	7	Mast	MAST PROFILE (TOP-PLATE H.2600mm)	1	
FS3.1206	8	Carter	COVER PROFILE (TOP-PLATE H.2050mm)	1	
FS3.1403	8	Carter	COVER PROFILE (TOP-PLATE H.2600mm)	1	
FS3.1282	9	Support	BRACKET	1	
FS3.1320	10	Plate	"U" PLATE	1	
FS3.1321	11	Support	SUPPORT	2	
FS3.1322	12	Group	WELDED TOP GROUP	1	
FS3.1326	13	Polizene	POLIZENE	1	A
FS3.1327	14	Plate	PLATE	2	
FS3.1328	15	Cover	COVER	2	
FS3.1331	16	Bracket	"L" BRACKET	1	
FS3.1332	17	Pin	PIN	2	
FS3.1333	18	Pin	PIN	2	
FS3.1336	19	Shaft	SHAFT	1	
FS3.1337	20	Cap	RUBBERED CAP	4	
FS3.1339	21	Bracket	MICROSWITCH BRACKET	2	
FS3.1340	22	Bracket	MICROSWITCH BRACKET	1	
FS3.1341	23	Bush	BUSH	2	
FS3.1366	24	Plate	PLATE	2	
FS4.1128	25	Bracket	BRACKET	2	
FS4.1223	26	Cable	TOP MICROSWITCH CABLE (TOP-PLATE H.2050mm)	1	
FS4.1228	26	Cable	TOP MICROSWITCH CABLE (TOP-PLATE H.2600mm)	1	
FS4.1224	27	Cable	BOTTOM MICROSWITCH CABLE (T. H.2050/2600mm)	1	
FS4.1226	28	Cable	PROXIMITY CABLE (TOP-PLATE H.2050mm)	1	
FS4.1229	28	Cable	PROXIMITY CABLE (TOP-PLATE H.2600mm)	1	

**FS4.0139/FS4.0143 Mast Top-Plate (H.2050/H.2600mm)**

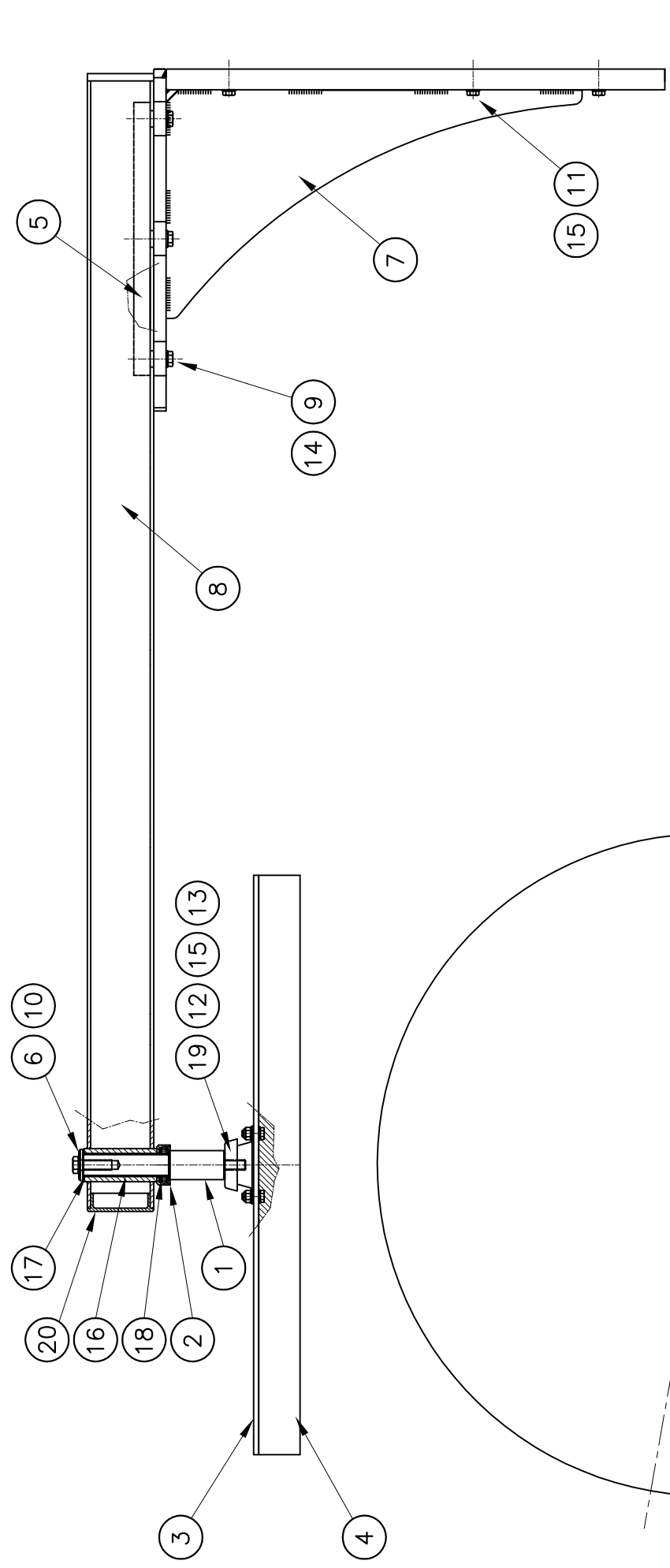
Part no.	RIF	Description	Specification English	Quantity	Maintenance
FS4.1255	29	Cable	MOTOR TOP-PLATE CABLE FS402 (TOP-P H.2050mm)	1	
FS4.1261	29	Cable	MOTOR TOP-PLATE CABLE FS403 (TOP-P H.2600mm)	1	
N1.1219	30	Screw	BUTTON HEAD SCREW M6x12 GALVANIZED ISO 7380	2	
N1.1507	31	Bolt	HEXAGON HEAD BOLT M8x16 GALVANIZED DIN 933	12	
N1.1521	32	Screw	HEXAGON HEAD SCREW M5x16 GALVANIZED DIN 933	4	
N1.1524	33	Bolt	HEXAGON HEAD BOLT M8x20 GALVANIZED DIN 933	2	<b>B</b>
N1.1548	34	Bolt	HEXAGON HEAD BOLT M10x20 GALVANIZED DIN 933	4	
N1.1580	35	Bolt	HEXAGON HEAD BOLT M8x30 GALVANIZED DIN 933	2	
N1.1585	36	Screw	HEXAGON HEAD SCREW M6x8 GALVANIZED DIN 933	2	
N1.1589	37	Bolt	HEXAGON HEAD BOLT M8x18 GALVANIZED DIN 933	17	<b>B</b>
N1.1590	38	Bolt	HEXAGON HEAD BOLT M8x22 GALVANIZED DIN 933	4	
N1.1592	39	Bolt	HEXAGON HEAD BOLT M10x22 GALVANIZED DIN 933	4	<b>B</b>
N1.1703	40	Screw	SCREW D.4,8x19 GALVANIZED DIN7971	2	
N1.1937	41	Screw	PHILIPS HEAD SCREW M4x30 ZINCED DIN 7985A	4	<b>B</b>
N1.3134	42	Bolt	SOCKET HEAD SET BOLT M8x10 GALVAN. DIN 913	2	
N1.5925	43	Nut	NUT CL.6 M8 GALVANIZED DIN 557	8	
N1.6115	44	Washer	PLAIN WASHER M4 ZINCED DIN 125A	4	
N1.6161	45	Washer	PLAIN WASHER M10 10,5x20x2 GALVANIZED DIN 125A	8	
N1.6164	46	Washer	PLAIN WASHER M8 8,4x16x1,6 GALVANIZED DIN 125A	27	
N1.6408	47	Washer	WASHER M5 5,1x9x0,6 GALVANIZED DIN 6798J	2	
N11.1147	48	Screw	CYLINDRICAL HEAD SCREW M5x16 GALVANI. DIN 912	2	
N2.1105	49	Seeger	ELASTIC RING TYPE A D.25 DIN 471	2	
N2.2475	50	Elastic thorn	ELASTIC THORN M5X40 DIN 1481 BLACK	2	
N2.3355	51	Key	KEY 8x7x35 INOX DIN 6885A	2	
N2.5341	52	Spring	SPRING	2	<b>E</b>
N3.3186	53	Bush	BUSH 15x17x17	2	
N3.4614	54	Support	Y-BEARING HOUSING D.20 FY20TF SKF SNUCF204	1	
N4.7337	55	Chain	CHAIN 1/2"x5/16" 126 LINKS (TOP-PLATE H.2050mm)	1	<b>B-D</b>
N4.3740	55	Chain	CHAIN 1/2"x5/16" 169 LINKS (TOP-PLATE H.2600mm)	1	<b>B-D</b>
N4.7413	56	Link	SPRING CLIP (LINK) 1/2"X5/16" ISO 08B-1	2	<b>E</b>
N4.7414	57	End-link	END-LINK L=11,4 M=19,05 N=8 P=18,3 Q=24	2	
N4.7612	58	Gear	GEAR VF49 F2 70 P63 B14 B8 BONFIGLIOLI	1	<b>B-C</b>
N5.1152	59	Motor	MOTOR 0,37KW 230/400V 50Hz BN63C2 B14 E BONF.	1	<b>B-C</b>
N5.2342	60	Micro switch	MICROSWITCH	2	<b>C</b>
N5.3331	61	Cable gland	CABLE GLAND PG.11	2	





**FS3.0115 Carriage group for mast top-plate**

<b>Part no.</b>	<b>RIF</b>	<b>Description</b>	<b>Specification English</b>	<b>Quantity</b>	<b>Maintenance</b>
FS3.1029	1	Bracket	BRACKET SUBASSEMBLY	2	
FS3.1030	2	Bracket	BRACKET SUBASSEMBLY	2	
FS3.1032	3	Wheel	WHEEL	4	<b>A</b>
FS3.1295	4	Cover	COVER	2	
FS3.1312	5	Washer	WASHER	8	
FS3.1313	6	Distance piece	DISTANCE PIECE	4	
FS3.1342	7	Tube	CARRIAGE SUPPORT GROUP	1	
N1.1593	8	Screw	HEXAGON HEAD SCREW M5x10 DIN 933 ZINCED	2	<b>B</b>
N1.5306	9	Nut	NUT M10 DIN 985	4	
N1.6161	10	Washer	PLAIN WASHER M10 10,5x20x2 DIN 125A ZINCED	4	
N1.6167	11	Washer	PLAIN WASHER M5 5,3x10x1 DIN 125A ZINCED	2	
N1.7319	12	Bolt	HEXAGON HEAD BOLT M8x20 DIN 6921ZN YELLOW	2	<b>B</b>
N3.1179	13	Ball Bearing	BALLBEARING 12x28x8 6001 RS1	8	<b>A-D</b>



Alle Angaben  
sind ohne  
Gewehr.

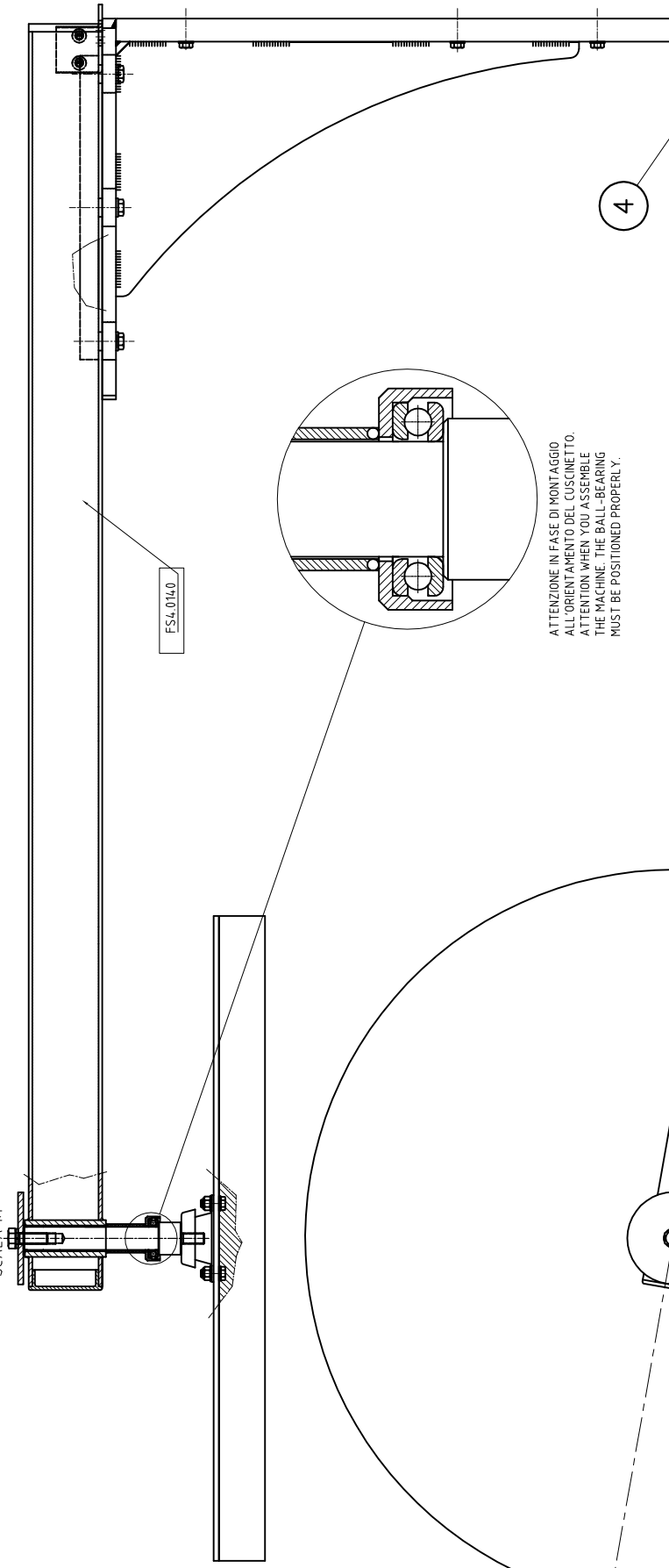
Alle Angaben  
sind ohne  
Gewehr.

FS4.0140/FS4.0141/  
FS4.0142/FS4.0158.V01.02

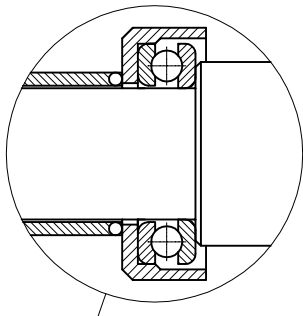
**FS4.0140/FS4.0141/FS4.0142/FS4.0158 Arm Top-Plate**

Part no.	RIF	Description	Specification English	Quantity	Maintenance
FS3.1194	1	Shaft	SHAFT	1	
FS3.1195	2	Support	HOUSING BALL BEARING	1	<b>E</b>
FS3.1196	3	Disk	DISK	1	
FS3.1197	4	Disk	SPONGE DISK	1	<b>E</b>
FS3.1198	5	Plate	PLATE	1	
FS3.1207	6	Washer	WASHER	1	
FS4.1060	7	Bracket	BRACKET (TOP-PLATE FS4.0140/FS4.0141)	1	
FS4.1090	7	Bracket	BRACKET (TOP-PLATE FS4.0142)	1	
FS4.1507	7	Bracket	BRACKET (TOP-PLATE FS4.0158)	1	
FS4.1061	8	Group	GROUP ARM (TOP-PLATE FS4.0140)	1	
FS4.1109	8	Group	GROUP ARM (TOP-PLATE FS4.0141)	1	
FS4.1091	8	Group	GROUP ARM (TOP-PLATE FS4.0142/FS4.0158)	1	
N1.1511	9	Bolt	HEXAGONAL HEAD BOLT M10x30 ZINCED DIN 933	3	<b>B</b>
N1.1525	10	Bolt	HEXAGONAL HEAD BOLT M12x30 ZINCED DIN 933	1	<b>B</b>
N1.1587	11	Bolt	HEXAGONAL HEAD BOLT M8x35 ZINCED DIN 933	6	<b>B</b>
N1.1590	12	Bolt	HEXAGON HEAD BOLT M8x22 GALVANIZED DIN 933	2	<b>B</b>
N1.5305	13	Nut	NUT CL.8 PG M10 GALVANIZED DIN 985	2	
N1.6161	14	Washer	PLAIN WASHER M10 10,5x20x2 GALVANIZED DIN 125A	3	
N1.6164	15	Washer	PLAIN WASHER M8 8,4x16x1,6 GALVANIZED DIN 125A	10	
N3.3184	16	Bush	BUSH 25x28x50	1	
N3.3187	17	Bush	BUSH 25X28X21,5	1	
N3.4703	18	Ball bearing	BALL BEARING 25x42x11	1	<b>A-D</b>
N4.4305	19	Joint	JOINT (55 SHORE)	1	
N4.5132	20	Cap	BLACK CAP 80x50x4 h=17	2	

SEZ. A-A  
SCALA 1:1

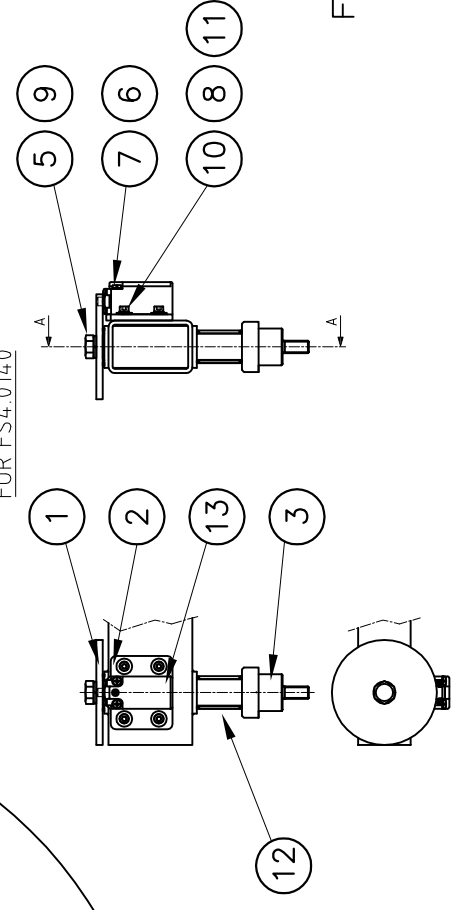


FS4.0140



ATTENZIONE IN FASE DI MONTAGGIO  
ALL'ORIENTAMENTO DEL CUSCINETTO.  
ATTENTION WHEN YOU ASSEMBLE  
THE MACHINE, THE BALL-BEARING  
MUST BE POSITIONED PROPERLY.

KIT OPTIONAL  
FOR FS4.0140



FS4.0155.V01.02



**FS4.0155 Top-Plate Group**

Part no.	RIF	Description	Specification English	Quantity	Maintenance
FS4.1408	1	Disk	DISK D.100mm	1	
FS4.1409	2	Bracket	BRACKET 70x59x6	1	
FS4.1410	3	Shaft	SHAFT	1	
FS4.1411	4	Bracket	BRACKET	1	
N1.1509	5	Bolt	HEXAGON HEAD SCREW M12 x 35 GALVAN. DIN933	1	<b>B</b>
N1.1937	6	Screw	PHILIPS HEAD SCREW M4x30 GALVANIZED DIN 7985	2	<b>B</b>
N1.6115	7	Washer	PLAIN WASHER M4 GALVANIZED DIN125A	2	
N1.6125	8	Washer	PLAIN WASHER M5 5,3X15X1,2 GALVANIZED DIN9021	6	
N1.6214	9	Washer	SPRING LOCK WASHER M12 GALVANIZED DIN 127 -B	1	
N1.6217	10	Washer	SPRING LOCK WASHER M5 GALVANIZED DIN 127 -B	6	
N11.1119	11	Screw	CYLINDRICAL HEAD CAP SCREW M5 x 20 DIN 912 G.	6	<b>B</b>
N2.5125	12	Spring	SPRING 2,5x31x45 / 5,5 (STANDARD SPRING)	1	<b>C</b>
N2.5289	12	Spring	SPRING (STRONGER SPRING)	1	<b>C</b>
N5.2356	13	Microswitch	MICROSWITCH FR501-A	1	<b>C</b>

**ELECTRICAL PARTS**

N5.3184		Cable	GREY CABLE 2x0,50mm	3mt	
N5.3331		Cable gland	CABLE GLAND PG.11	1	
N5.3341		Lock nut	LOCK NUT M20 GREY COLOR RAL 7035	2	
N5.3344		Cable gland	CABLE GLAND SKINTOP ST-M M20x1,5	2	
N5.3351		Cable gland	GREY CABLE GLAND M12 D.3-5,5mm	1	
N5.3353		Lock nut	LOCK NUT M12 GREY COLOR RAL 7035	1	
N5.3801		Bush	BUSH	4	
N5.6606		Box	BOX 120x80x50	1	
N51.2107		Lug	RED LUG 0.5-1.5mm <sup>2</sup>	4	
N51.2182		Connector	MALE BLU CONNECTOR 6,35x0,8	4	