
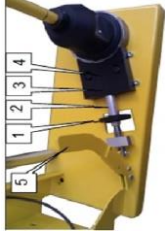
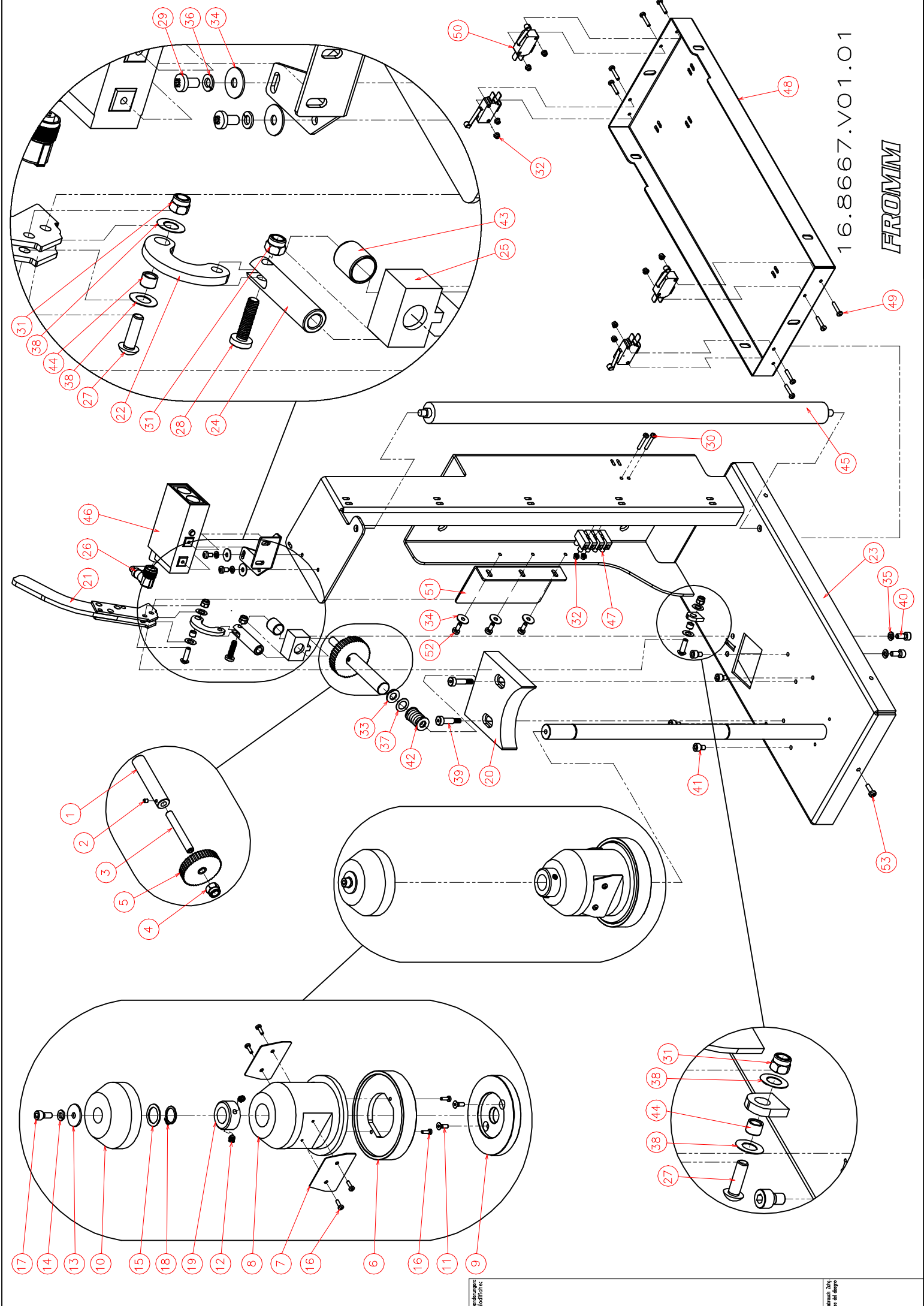


TDS- Carriages FS3xx serie (C0-C1-C2-C4)

<p>C0 - Mechanical brake - core tension of roll (basic stretching)</p>	<p>The carriage enables to stretch the film; pre-stretching the film is not possible Tension 0-50 % depends on the quality of the film The film is stretched between the carriage and the pallet, controlled by a lever or wheel and braking of the top / bottom. The brake is installed at the bottom of the carriage The carriage is especially suitable for use for customers with small film consumer; core: Ø 76 mm; film thickness: 9-35 my or so called pre-stretched film Suitable for medium to high pallet weights: 150 to 2.000 kg A photoelectric cell for automatic pallet height detection The speed controlled by a frequency converter The film overlap can be controlled by a frequency converter Quick replacement of film rolls</p>
  <p>Description of stretching: Stretch is adjusted by turning the knob (1) which presses against the pin (2), inserted into the high-quality brake block (3). There is a spring (4) in the brake block to absorb possible wear during the working process. The complete stretch can be released by moving the handle (5) to the down position. This carriage can be used to wrap with thin film or pre-stretch film 250-500 mm wide.</p> <p>Safety: The carriage is mounted in such a way that it can be lifted from its position. The foot protection sensor is not available. The distance between the floor and the top of the carriage is approx. 115 mm.</p>	



16.8667.V01.01

FROMM

- 17
- 14
- 13
- 10
- 15
- 18
- 19
- 12
- 8
- 7
- 16
- 6
- 16
- 11
- 9

- 1
- 2
- 3
- 5
- 4

- 29
- 36
- 34
- 31
- 38
- 44
- 38
- 27
- 22
- 31
- 28
- 24
- 25
- 43
- 50
- 32
- 48
- 49

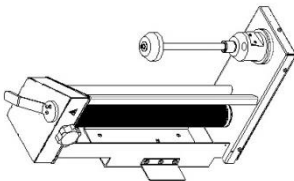
- 46
- 26
- 21
- 51
- 34
- 52
- 33
- 37
- 42
- 39
- 20
- 32
- 47
- 30
- 45
- 23
- 35
- 40
- 41
- 53

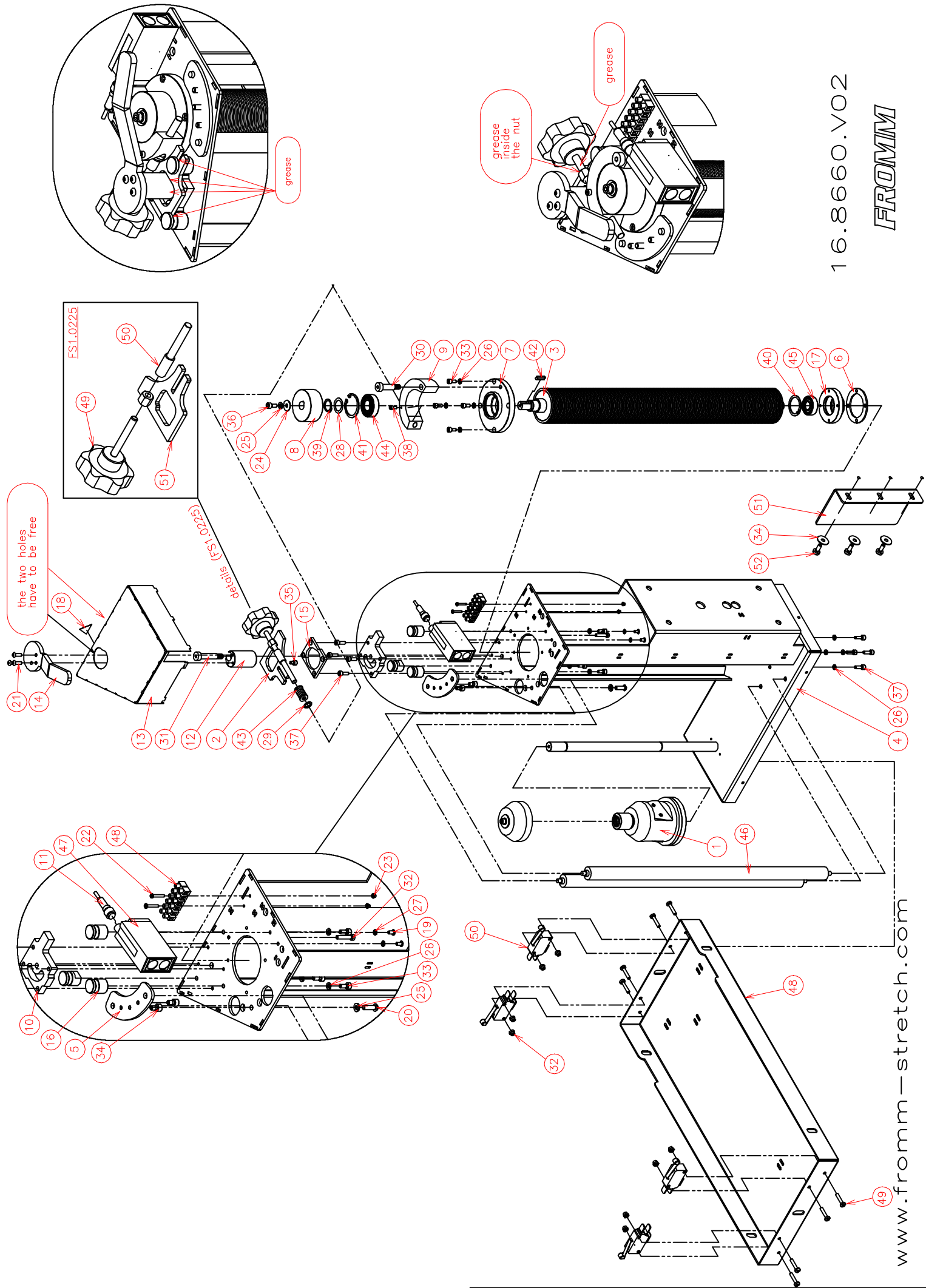
16.8667 Carriage 0 FS3.0249

Part no.	RIF	Description	Specification English	Q.ty	Maintenance	Art. Group
FS1.2175	1	Pin	PIN	1	A-C-D	4400
N1.3113	2	Bolt	BOLT M6x16 DIN 913 GALVANIZED	1	B	4400
N1.3149	3	Bolt	BOLT M8x60 DIN 913 GALVANIZED	1	C-D	4400
N1.5305	4	Nut	NUT M8 DIN 985 GALVANIZED	1		4200
N1.5945	5	Washer	SPECIAL WHEEL/PINION FIL. M8	1	A-C	4400
FS1.2174	6	Disk	DISK	1	A	4402
FS3.2039	7	Bracket	HARMONIC STEEL PLATE SPOOL HOLDER LOCKER	2	A-C	4402
FS3.2184	8	Holder	SPOOL HOLDER	1	A-C	4400
FS3.2776	9	Disk	DISK TO CENTRE THE SPOOL HOLDER FLANGE	1	A-C	4401
FS3.2231	10	Holder	SPOOL HOLDER CENTRAL	1	A-C	4400
N1.2180	11	Screw	SOCKET CTRS. HD BOLT DIN 7991-A- M4x12 ZN	2		4200
N1.3211	12	Bolt	BOLT M6x8 DIN 913 GALVANIZED	2	B	4200
N1.6175	13	Washer	WASHER D.6x20x1.5 ZINCED	1		4200
N1.6204	14	Washer	SPRING LOCK WASHER DIN 127 -B- M6	1		4200
N1.6325	15	Washer	WASHER TYPE "PS" 18x25x1 DIN 988	1		4200
N1.7336	16	Screw	PHILIPS HEAD SCREW 3.5x10 ZINCED UNI 9707	6		4200
N11.1136	17	Screw	CYLINDRICAL HEAD CAP SCREWS DIN 912 M6x14 ZN	1	B	4200
N2.1112	18	Seeger	SEEGER D.17 TYPE A DIN 471	1		4400
N7.2206	19	Metal ring	BLOCKING RING DIN 705 SHAPE C D. 18	1		4200
FS1.2155	20	Brake	BRAKE	1	A-C	4401
FS1.2160	21	Lever	LEVER	1		4402
FS1.2161	22	Bracket	BRACKET	1	C	4400
FS1.2165	23	Structure	WELDED STRUCTURE	1	A	4402
FS1.2168	24	Piston	PISTON	1	A-C	4400
FS1.2172	25	Block	BLOCK	1	A-C	4402
FS1.2178	26	Cable	CABLE FOR PHOTOCELL	1	C	4403
N1.1225	27	Screw	BUTTON HEAD SCREW M5x16 GALVANIZED ISO 7380	2	C	4200
N1.1904	28	Screw	PHILIPS HEAD SCREW M5x20 GALVANIZED DIN 7985	1	C	4400
N1.1911	29	Screw	PHILIPS HEAD SCREW M4x8 GALVANIZED DIN 7985	2		4200
N1.1916	30	Screw	PHILIPS HEAD SCREW 3x20 ZINCED DIN 7985A	2		4200
N1.5302	31	Nut	NUT M5 ZN DIN 985	3		4200
N1.5313	32	Nut	NUT M3 ZN DIN 985	10		4200
N1.6117	33	Washer	PLAIN WASHER M8 ZINCED DIN 435	1		4200
N1.6160	34	Washer	PLAIN WASHER M4 ZINCED DIN 435	5		4200
N1.6217	35	Washer	SPRING LOCK WASHER DIN 127 -B- M5	2		4200
N1.6219	36	Washer	SPRING LOCK WASHER DIN 127 -B- M4	2		4200
N1.6364	37	Washer	WASHER TYPE "PS" 16x10x0.5 DIN 988	1		4400
N1.6382	38	Washer	WASHER TYPE "PS" 7x13x0.3 DIN 988	4		4400
N1.7116	39	Screw	CYLINDRICAL HEAD CAP SCREWS M5 6x16 ZN	2		4200
N11.1101	40	Screw	CYLINDRICAL HEAD CAP SCREWS M5x12 ISO4762 ZN	2		4200
N11.1134	41	Screw	CYLINDRICAL HEAD CAP SCREWS M5x8 ISO4762 ZN	4		4200
N21.5122	42	Spring	SPRING	1	C	4400
N3.3119	43	Bush	GLYCODUR PG121415F	1	C-D	4400
N3.3161	44	Bush	BUSH 5x7x5 - MB0505DU	1	C-D	4400
N4.2210	45	Roll	ROLLS TYPE GL57 L=566MM	1	A	4402

16.8667 Carriage 0 FS3.0249

Part no.	RIF	Description	Specification English	Q.ty	Maintenance	Art. Group
N5.2635	46	Photocell	PHOTOCELL RX8/00-1A	1	A-E	4403
N5.6701	47	Clamp	CLAMP 12 POLES	1	C	4403
FS3.2568	48	Steel	CRUSH-PROOF GUARD STEEL	1		4402
N1.1914	49	Screw	PHILIPS HEAD SCREW 3x16 ZINCED DIN 7985A	8		4200
N5.2375	50	Microswitch	MICROSWITCH OMRON D3V-166-M1C5	4	C-E	4401
FS3.2567	51	Bracket	BRACKET	1		4402
N1.7333	52	Screw	HEAD PIN SCREW M4x10 ZINCED UNI 8112	3		4200
N1.7339	53	Screw	HEAD PIN SCREW M5x16 ZINCED UNI 8112	6		4200

<p>C1 - Mechanical brake - roll tension (stretching over auxiliary rollers – tensioning rollers)</p>	 <p>A strong rigid steel structure The film is stretched over the roller The stretching force can be set using the wheel and locked using the lever Stretch 20-50 % , depending on the quality of the film The stretch of the film is uniform The overlap of the film can be controlled by a frequency converter A photoelectric cell for automatic pallet height detection Easy to replace the film; release the brake for changing the core The speed controlled by a frequency converter Safety foot protection according to CE Low maintenance of the braking system</p>
---	---



16.8660.V02

FROMM

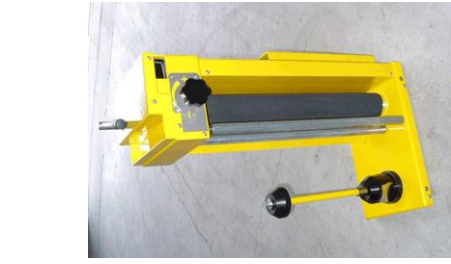
16.8660 Carriage 1 FS3.0280G

Part no.	RIF	Description	Specification English	Q.ty	Maintenance	Art. Group
FS1.0220	1	Group	GROUP SPOOL-HOLDER	1	A-C	4410
FS1.0225	2	Group	GROUP SLIDE	1	A-C-E	4410
N4.1942	49	Handle	HANDLE VP/60 - M8x60	1	A-C-D-E	4400
FS1.2203	50	Pin	PIN	1	D	4400
FS1.2211	51	Plate	PLATE	1	A-C-E	4402
FS1.2170	3	Roll	RUBBER ROLL	1	A-C	4402
FS1.2190G	4	Structure	STRUCTURE YELLOW RAL1021 LIQUID PLAIN PAINT.	1	A-C	4402
FS1.2193	5	Plate	PLATE	1		4402
FS1.2194	6	Disk	DISK	1		4402
FS1.2198	7	Flange	FLANGE	1		4402
FS1.2199	8	Roll	FRICTION ROLL	1	A-C	4402
FS1.2202	9	Brake	CARRIAGE BRAKE	1	A-C-E	4401
FS1.2209	10	Plate	PLATE	1		4402
FS1.2216	11	Cable	PHOTOCELL CABLE	1	C	4403
FS1.2225	12	Excenter	EXCENTER	1	C-D	4402
FS1.2226G	13	Carter	CARTER YELLOW RAL1021 LIQUID PLAIN PAINT.	1	A	4402
FS1.2228	14	Lever	LEVER	1	A-C-E	4402
FS1.2231	15	Plate	PLATE	1		4402
FS1.2232	16	Guide	GUIDE	3	C-D-E	4402
FS3.2209	17	Flange	FLANGE	1		4402
FS3.2341	18	Label	ANTI-CRUSHING LABEL	1	C	4405
N1.1213	19	Screw	BUTTON HEAD SCREW 4x8 ZINCED ISO 7380	2		4200
N1.1222	20	Screw	BUTTON HEAD SCREW ISO 7380 - M6 x 20	1		4200
N1.1225	21	Screw	BUTTON HEAD SCREW ISO 7380 - M5 x 16	3		4200
N1.1916	22	Screw	PHILIPS HEAD SCREW 3x20 ZINCED ISO 7045	2		4200
N1.5313	23	Nut	NUT M3 ZN DIN 985	2		4200
N1.6141	24	Washer	PLAIN WASHER D.6x20x1.5 ZINCED	1		4200
N1.6204	25	Washer	SPRING LOCK WASHER DIN 127 -B- M6	2		4200
N1.6217	26	Washer	SPRING LOCK WASHER DIN 127 -B- M5	11		4200
N1.6219	27	Washer	SPRING LOCK WASHER DIN 127 -B- M4	2		4200
N1.6327	28	Washer	WASHER TYPE "PS" 20x28x0.5 DIN 988	1		4200
N1.6364	29	Washer	WASHER TYPE "PS" 10x16x0.5 DIN 988	1		4200
N1.7101	30	Bolt	CYLINDRICAL HEAD BOLT 10x30 M8	1	B	4200
N1.7103	31	Bolt	CYLINDRICAL HEAD BOLT 10x40 M8	1	B	4200
N1.7338	32	Screw	HEAD PIN SCREW M5x25 ZINCED UNI 8112	1		4200
N11.1101	33	Bolt	CYLINDRICAL HEAD BOLT CL.8.8 DIN 912 M5x12 ZN	7		4200
N11.1121	34	Bolt	CYLINDRICAL HEAD BOLT CL.8.8 DIN 912 M6x10 ZN	2		4200
N11.1134	35	Screw	CYLINDRICAL HEAD CAP SCREWS DIN 912 M5x8 ZN	1		4200
N11.1136	36	Screw	CYLINDRICAL HEAD CAP SCREWS DIN 912 M6x14 ZN	1		4200
N11.1147	37	Screw	CYLINDRICAL HEAD CAP SCREWS DIN 912 M5x16 ZN	8		4200
N11.1162	38	Screw	CYLINDRICAL HEAD SCREW DIN 912 M4x10 GAL.	1		4200

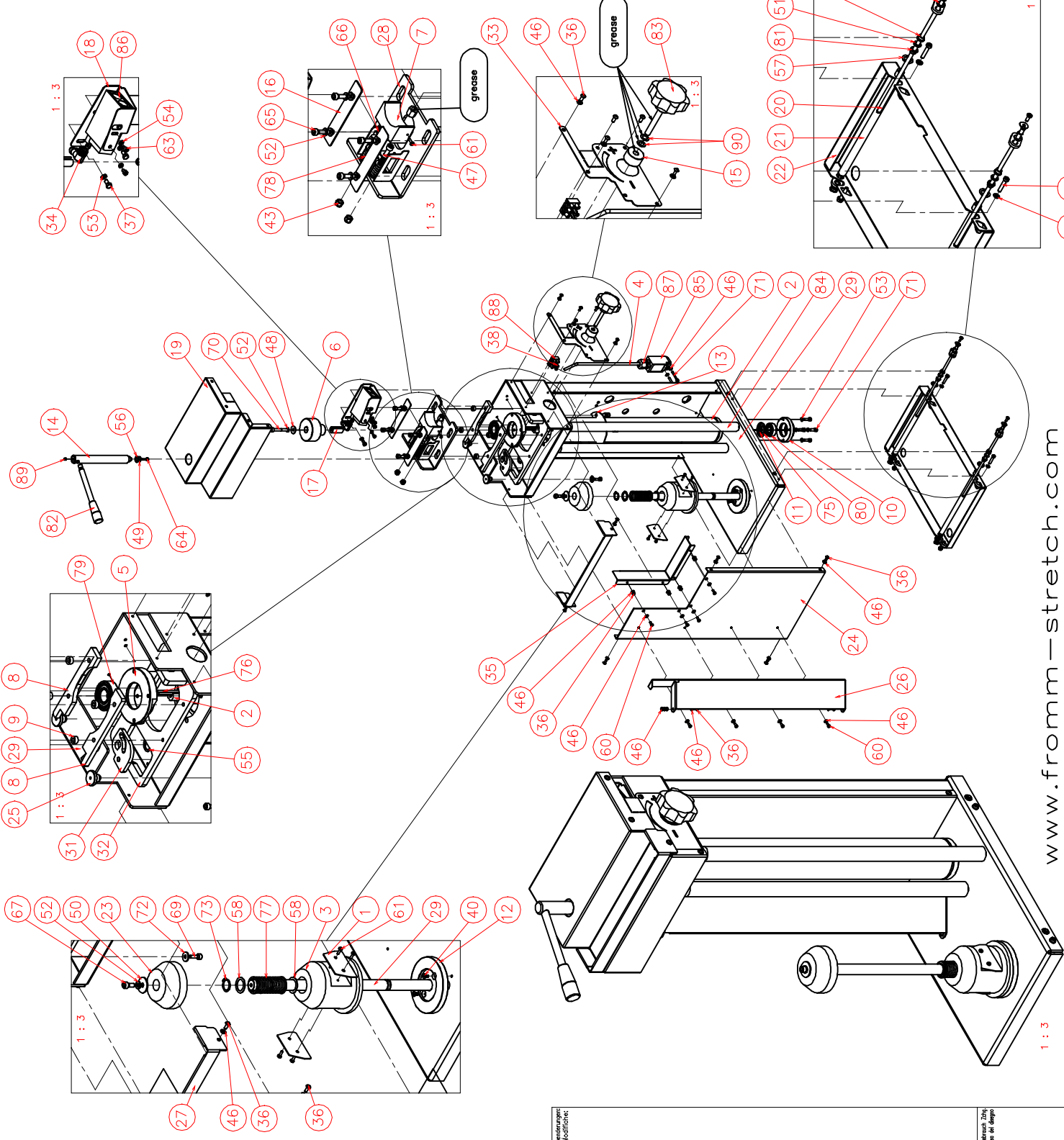
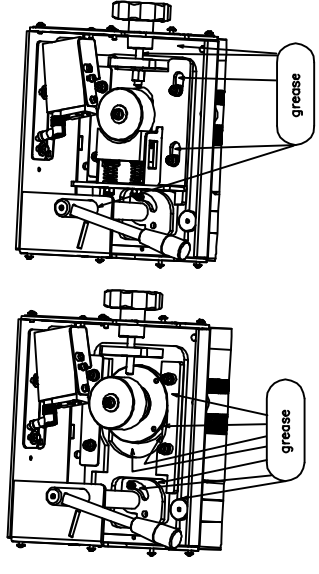
16.8660 Carriage 1 FS3.0280G

Part no.	RIF	Description	Specification English	Q.ty	Maintenance	Art. Group
N2.1108	39	Seeger	SEEGER D.20 TYPE A DIN 471	1		4200
N2.1206	40	Seeger	SEEGER FOR HOLES D.35 TYPE J	1		4200
N2.1222	41	Seeger	SEEGER D.42 TYPE "J" UNI 3654/7437	1		4200
N2.3305	42	Key	KEY 5x5x20 DIN 6885	1		4200
N21.5122	43	Spring	SPRING Dh=16 Dd=8 Lo=25 ISO 10243	1	C-D	4400
N3.1151	44	Ball bearing	BALL BEARING 6004 2RS 20x42x12	1	C	4400
N3.1182	45	Ball bearings	BALL BEARING 15x35x11 6202.2RS	1	C	4400
N4.2210	46	Roll	ROLLS TYPE GL57 L=566MM	2	A	4402
N5.2635	47	Photocell	PHOTOCELL RX8/00-1A	1	A-E	4403
N5.6701	48	Clamp	CLAMP 12 POLES	1	C	4403
FS3.2568	48	Steel	CRUSH-PROOF GUARD STEEL	1	A-C-E	4402
N1.1914	49	Screw	PHILIPS HEAD SCREW 3x16 ZINCED DIN 7985A	8		4200
N5.2375	50	Microswitch	MICROSWITCH OMRON D3V-166-M1C5	4	C-E	4401
FS3.2567	51	Bracket	BRACKET	1		4402
N1.7333	52	Screw	HEAD PIN SCREW M4x10 ZINCED UNI 8112	3		4200
N1.7339	53	Screw	HEAD PIN SCREW M5x16 ZINCED UNI 8112	6		4200

C2 - Mechanical brake - rolles pre-stretch



Strong rigid steel structure
The film is stretched over the roller
Prestretch 0 to 80 % , depending on the quality of the film
The stretching force can be set using the hand wheel and locked using the lever
The stretch can be set during motion
The speed controlled by a frequency converter
The stretch of the film is uniform
The overlap of the film can be controlled by a frequency converter
A photoelectric cell for the automatic pallet height detection
Easy and quick to change the film; release the brake to change the core
Suitable for medium to high pallet weights: 150-2.000 kg
Max. pallet height: 2.000 mm
Safety food protection according to CE
Low maintenance of the braking system
Suitable to use in combination with 12/15/17/20/23/30 and 35 micron LLDPE stretch film



16.8661

FROMM

www.fromm-stretch.com

Verbindungen
aufschmieren

Verbindungen
aufschmieren

16.8661 Carriage 2 FS3.0217G

Part no.	RIF	Description	Specification English	Q.ty	Maintenance	Art. Group
FS3.2039	1	Bracket	HARMONIC STEEL PLATE SPOOL HOLDER LOCKER	2	A-C	4402
FS3.2151	2	Roll	RUBERED ROLL	1	A-C	4402
FS3.2184	3	Holder	SPOOL HOLDER	1	A-C	4400
FS3.2196	4	Wire	SENSOR MICRO WIRE	1	C	4403
FS3.2201	5	Flange	FLANGE FOR BALL BEARING	1		4402
FS3.2204	6	Friction Roll	FRICTION ROLL	1		4402
FS3.2205	7	Friction	FRICTION	1	A-C	4401
FS3.2206	8	Steel	STEEL FOR SLIDE	2	A-D	4402
FS3.2207	9	Distance	DISTANCE PIECE	4		4402
FS3.2209	10	Flange	FLANGE FOR BALL BEARING	1		4402
FS3.2210	11	Distance	DISTANCE PIECE	1		4200
FS3.2776	12	Disk	DISK TO CENTRE THE SPOOL HOLDER FLANGE	1		4401
FS3.2212G	13	Disk	DISK FOR BALL BEARING	1		4402
FS3.2214	14	Shaft	SHAFT FOR HANDLE	1	E	4402
FS3.2215	15	Distance	DISTANCE PIECE	1		4402
FS3.2219	16	Steel	STEEL STOP-SLIDE	2		4402
FS3.2222	17	Distance	DISTANCE PIECE	1		4402
FS3.2223	18	Support	PHOTOCELL SUPPORT	1		4402
FS3.2224	18	Support	PHOTOCELL SICK SUPPORT CARRIAGE 2	1		4402
FS3.2225G	19	Carter	UPPER CARTER	1	A	4402
FS3.2228	20	Hinge	HINGE FOR THE CRUSH-PROOF GUARD STEEL	2	E	4402
FS3.2229	21	Hinge	HINGE FOR THE CRUSH-PROOF GUARD STEEL	2		4402
FS3.2230	22	Steel	CRUSH-PROOF GUARD STEEL	1	A-E	4402
FS3.2231	23	Holder	SPOOL HOLDER CENTRAL	1	C	4400
FS3.2232G	24	Carter	CARTER CARRIAGE COVER YELLOW RAL 1021	1	A	4402
FS3.2234	25	Distance	DISTANCE PIECE	2		4402
FS3.2235G	26	Carter	PROTECTION CARTER YELLOW RAL 1021	1	A	4402
FS3.2236G	27	Bracket	BRACKET TOOL-BOX	1		4402
FS3.2239	28	Slide	SLIDE WITH FRICTION	1	A-C-D-E	4402
FS3.2240G	29	Sheet	WELDED STEEL STRUCTURE YELLOW RAL 1021	1	A	4402
FS3.2241	30	Plate	PLATE	4	C	4402
FS3.2242	31	Plate	PLATE	1		4402
FS3.2246	32	Slide	COMPLETE SLIDE	1		4402
FS3.2247	33	Plate	FRONTAL PLATE	1		4402
FS3.2258	34	Wire	WIRE PHOTOCELL FS300	1	C	4403
FS3.2279	35	Carter	CARTER CARRIAGE COVER YELLOW RAL 1021	1	A	4402
N1.1230	36	Screw	BUTTON HEAD SCREW 4x10 ZINCED ISO 7380	21	B	4200
N1.1593	37	Screw	HEXAGON HEAD BOLT DIN 933 - M5 x 10 ZINCED	2		4200
N1.1714	38	Screw	BUTTON HEAD SCREW 2.9x16 ZINCED DIN 7981	2		4200
N1.1921	39	Screw	CYLINDRICAL HEAD CAP SCREW M4x10 ZN DIN 7985	4	B	4200
N1.2180	40	Screw	SOCKET CTRS. HD BOLT DIN 7991-A- M4x12 ZN	2		4200
N1.3301	41	Bolt	BOLT M10x12 DIN 916 BLACK	1		4200
N1.4804	42	Bolt	BOLT M10x19	1		4200
N1.5301	43	Nut	NUT M6 ZN DIN 985	2		4200
N1.6103	44	Washer	PLAIN WASHER D.5.3x9.5x1 M5 ZINCED DIN 433	4		4200

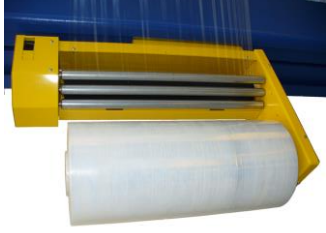
16.8661 Carriage 2 FS3.0217G

Part no.	RIF	Description	Specification English	Q.ty	Maintenance	Art. Group
N1.6114	45	Washer	PLAIN WASHER D.6.4x12.5x1.6 M6 ZINCED DIN 434	4		4200
N1.6115	46	Washer	PLAIN WASHER D.4.3x9 M4 ZINCED DIN 435	32		4200
N1.6131	47	Washer	PLAIN WASHER D.6.4x18x1.6 M6 ZINCED DIN 9021B	2		4200
N1.6141	48	Washer	PLAIN WASHER D.6x20x1.5 ZINCED	1		4200
N1.6160	49	Washer	PLAIN WASHER D.4.3x14x0.8 M4 ZINCED	5		4200
N1.6175	50	Washer	WASHER D.6x20x1.5 ZINCED	1		4200
N1.6198	51	Washer	NYLON WASHER D.INT.6.4 D.EST.12.5 DIN 125	4		4200
N1.6204	52	Washer	SPRING LOCK WASHER DIN 127 -B- M6	10		4200
N1.6217	53	Washer	SPRING LOCK WASHER DIN 127 -B- M5	6		4200
N1.6219	54	Washer	SPRING LOCK WASHER DIN 127 -B- M4	2		4200
N1.6307	55	Washer	WASHER TYPE "SS" 15x21x1.5 DIN 988	1		4200
N1.6309	56	Washer	WASHER TYPE "PS" 10x16x0.5 DIN 988	1		4200
N1.6318	57	Washer	WASHER TYPE "SS" 12x18x1.2 DIN 988	4		4200
N1.6325	58	Washer	WASHER TYPE "PS" 18x25x1 DIN 988	3		4200
N1.6331	59	Washer	WASHER TYPE "PS" 6x12x0.5 DIN 988	4		4200
N1.7333	60	Screw	HEAD PIN SCREW M4x10 ZINCED UNI 8112	8		4200
N1.7336	61	Screw	PHILIPS HEAD SCREW 3.5x10 ZINCED UNI 9707	5		4200
N1.7338	62	Screw	HEAD PIN SCREW M5x25 ZINCED UNI 8112	4		4200
N11.1114	63	Screw	CYLINDRICAL HEAD CAP SCREWS DIN 912 M4x6 ZN	2		4200
N11.1117	64	Screw	CYLINDRICAL HEAD CAP SCREWS DIN 912 M4x16 ZN	1		4200
N11.1122	65	Screw	CYLINDRICAL HEAD CAP SCREWS DIN 912 M6x25 ZN	4	B	4200
N11.1129	66	Screw	CYLINDRICAL HEAD CAP SCREWS DIN 912 M6x40 ZN	2		4200
N11.1136	67	Screw	CYLINDRICAL HEAD CAP SCREWS DIN 912 M6x14 ZN	1	B	4200
N11.1143	68	Screw	CYLINDRICAL HEAD CAP SCREWS DIN 912 M6x20 ZN	4		4200
N11.1147	69	Screw	CYLINDRICAL HEAD CAP SCREWS DIN 912 M5x16 ZN	6		4200
N11.1163	70	Screw	CYLINDRICAL HEAD CAP SCREWS DIN 912 M6x50 ZN	1		4200
N11.1174	71	Screw	CYLINDRICAL HEAD CAP SCREWS DIN 912 M4x30 ZN	2		4200
N11.6104	72	Washer	PLAIN WASHER D.15x5.3x1.2 M5 ZINCED ISO 4759/3	2		4200
N2.1112	73	Seeger	SEEGER D.17 TYPE A DIN 471	2		4400
N2.1118	74	Seeger	SEEGER D.6 TYPE A DIN 471	4		4200
N2.1206	75	Seeger	SEEGER FOR HOLES D.35 TYPE J	1		4200
N2.3369	76	Key	KEY 5x5x50 DIN 6885	1		4200
N21.5120	77	Spring	SPRING D.INT.24.1 L=67.5	1	C	4400
N21.5122	78	Spring	SPRING Dh=16 Dd=8 Lo=25 ISO 10243	2	C	4400
N3.1147	79	Ball bearings	BALL BEARING 20x47x14 6204.2RS	1	C	4400
N3.1182	80	Ball bearings	BALL BEARING 15x35x11 6202.2RS	1	C	4400
N3.3317	81	Bush	BUSH D.INT.=6mm L= 6mm	8		4402
N4.1941	82	Lever	LEVER d.12xD.17 - M10 L=174	1		4402
N4.1942	83	Handle	HEXAGON HANDLE VP/60 M8x60	1	A-C-D	4400
N4.2210	84	Roll	ROLLS TYPE GL57 L=566MM	2	A	4402
N5.2357	85	Sensor	MICRO SENSOR FR601-A FOOT PROTECTION	1	C-E	4401
N5.2635	86	Photocell	PHOTOCELL RX8/00-1A	1	A-E	4403
N5.2638	86	Photocell	PHOTOCELL (BLACK FILM)	1	A-E	4403
N5.2651	86	Photocell	PHOTOCELL (BLACK GOODS)+SUPPORT FS3.2224	1	A-E	4403
N5.3331	87	Cable gland	CABLE GLAND PG. 11 KLEINHUIS	1		4403

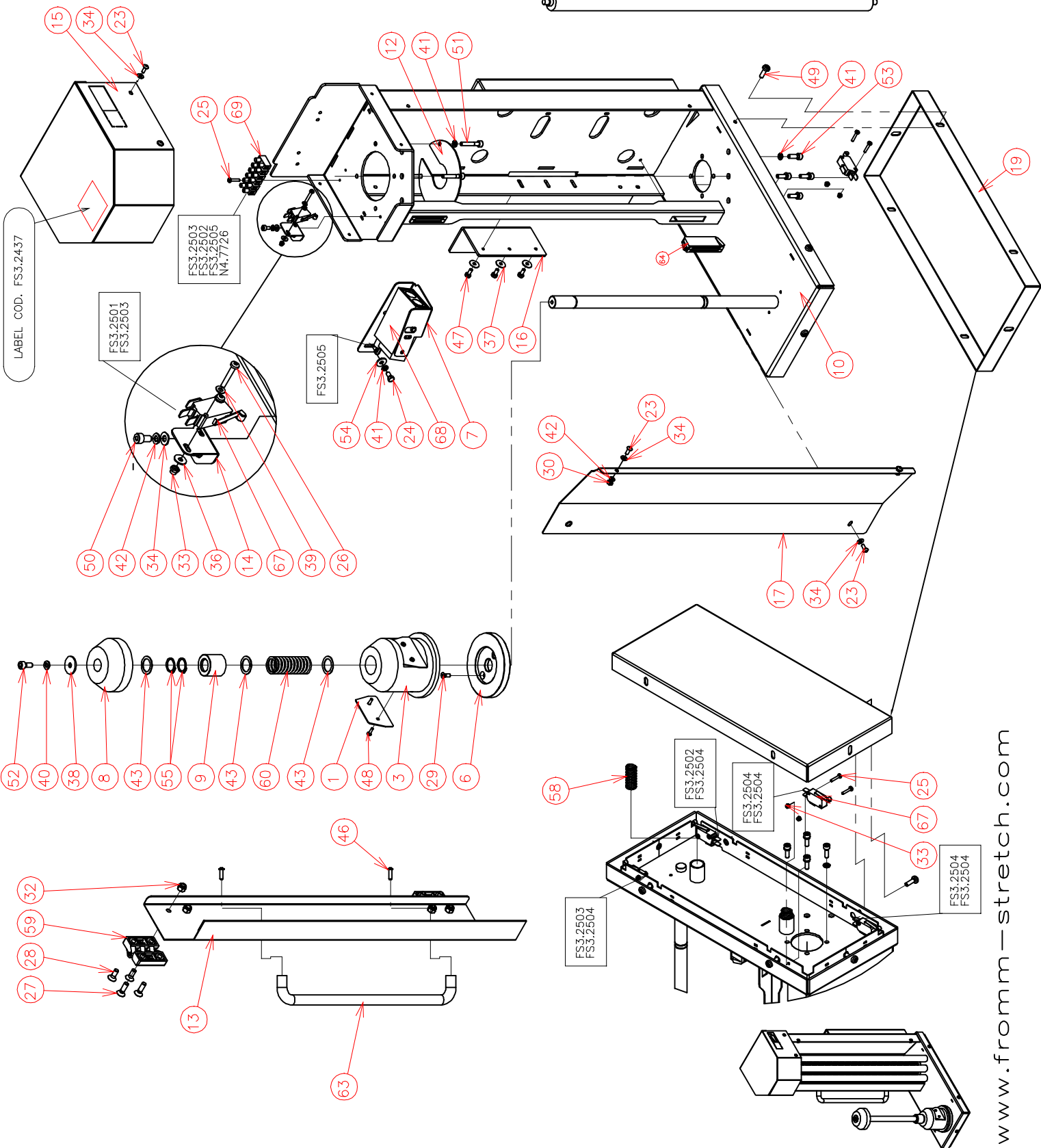
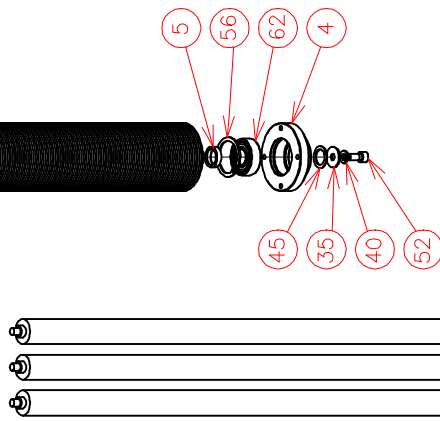
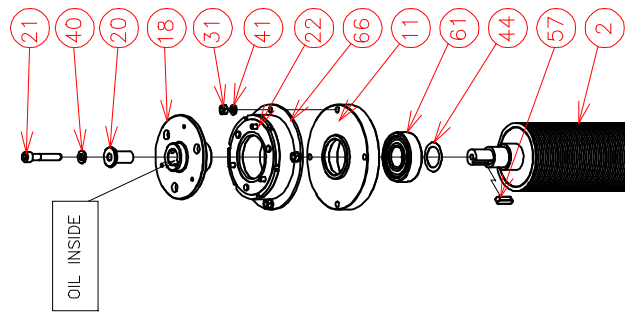
16.8661 Carriage 2 FS3.0217G

Part no.	RIF Description	Specification English	Q.ty	Maintenance	Art. Group
N5.6701	88 Clamp	CLAMP 12 POLES	1	C	4403
N1.3302	89 Bolt	BOLT M5x6 DIN 916 BLACK	1		4200
N1.6358	90 Washer	WASHER TYPE PS DIN988 8X14X0,15 ZINCED	2		4200

C4 - Electromagnetic brake (stretching over the roller – tensioning roller)



The film carriage with an electromagnetic brake
The film is pre-stretched between the film carriage and the pallet
The pre-stretch is adjustable by means of touch buttons on the control panel
For tension up to 100%
Stretch can be set manually -> smoother setting
The stretch of the film is uniform
The stretch of the film is set using a potentiometer; it allows a high stretch
Recommended to work with all kinds- of stretch-film
Including protective safety protections and door with a switch



16.8663

FROMM

www.fromm-stretch.com

16.8663 Carriage 4 FS3.0229G

Part no.	RIF	Description	Specification English	Q.ty	Maintenance	Art. Group
FS3.2039	1	Bracket	HARMONIC STEEL PLATE SPOOL HOLDER LOCKER	2	A-C	4402
FS3.2151	2	Roll	RUBERED ROLL	1	A-C	4402
FS3.2184	3	Holder	SPOOL HOLDER	1	A-C	4400
FS3.2209	4	Flange	BALL BEARING HOUSING	1		4402
FS3.2210	5	Distance	DISTANCE PIECE	1		4402
FS3.2776	6	Disk	DISK TO CENTRE THE SPOOL HOLDER FLANGE	1		4401
FS3.2223	7	Support	PHOTOCELL SUPPORT	1		4402
FS3.2231	8	Holder	SPOOL HOLDER CENTRAL	1	C	4400
FS3.2385	9	Block	BLOCK FOR THE SPRING	1	B	4402
FS3.2410	10	Sheet	WELDED STEEL STRUCTURE YELLOW RAL 1021	1	A	4402
FS3.2411	11	Flange	BALL BEARING HOUSING	1		4402
FS3.2412	12	Disk	DISK	1		4402
FS3.2418	13	Door	DOOR	1	A	4402
FS3.2420	14	Bracket	BRACKET	1		4402
FS3.2428	15	Carter	UPPER CARTER	1	A	4402
FS3.2429	16	Bracket	BRACKET	1		4402
FS3.2430	17	Carter	PROTECTION CARTER YELLOW RAL 1021	1	A	4402
FS3.2431	18	Flange	FLANGE	1		4401
FS3.2432	19	Steel	CRUSH-PROOF GUARD STEEL	1	E	4402
FS3.2440	20	Distance piece	DISTANCE PIECE	1		4402
N1.1154	21	Screw	CYLINDRICAL HEAD CAP SCREWS DIN 912 M6x35 ZN	1		4200
N1.1212	22	Screw	BUTTON HEAD SCREW 4x6 ZINCED ISO 7380	3		4200
N1.1230	23	Screw	BUTTON HEAD SCREW 4x10 ZINCED ISO 7380	8	B	4200
N1.1593	24	Screw	HEXAGON HEAD BOLT DIN 933 - M5 x 10 ZINCED	2		4200
N1.1914	25	Screw	PHILIPS HEAD SCREW 3x16 ZINCED DIN 7985A	10		4200
N1.1916	26	Screw	PHILIPS HEAD SCREW 3x20 ZINCED DIN 7985A	2		4200
N1.2102	27	Screw	SOCKET CTRS. HD BOLT DIN 7991-A- M6x20 ZN	4		4200
N1.2108	28	Screw	SOCKET CTRS. HD BOLT DIN 7991-A- M6x16 ZN	4		4200
N1.2180	29	Screw	SOCKET CTRS. HD BOLT DIN 7991-A- M4x12 ZN	2	B	4200
N1.5124	30	Nut	NUT DIN 934 - M4	2		4200
N1.5131	31	Nut	NUT DIN 934 - M5	4		4200
N1.5301	32	Nut	NUT M6 ZN DIN 985	4		4200
N1.5313	33	Nut	NUT M3 ZN DIN 985	10		4200
N1.6115	34	Washer	PLAIN WASHER D.4.3x9 M4 ZINCED DIN 435	10		4200
N1.6141	35	Washer	PLAIN WASHER D.6x20x1.5 ZINCED	1		4200
N1.6154	36	Washer	PLAIN WASHER M3 3,2x9x0,8 GALVANIZED DIN 9021	2		4200
N1.6160	37	Washer	PLAIN WASHER D.4.3x14x0.8 M4 ZINCED	3		4200
N1.6175	38	Washer	WASHER D.6x20x1.5 ZINCED	1		4200
N1.6190	39	Washer	NYLON WASHER Di=3.2 De=7 Sp.0.5	2		4200
N1.6204	40	Washer	SPRING LOCK WASHER DIN 127 -B- M6	3		4200
N1.6217	41	Washer	SPRING LOCK WASHER DIN 127 -B- M5	14		4200
N1.6219	42	Washer	SPRING LOCK WASHER DIN 127 -B- M4	4		4200
N1.6325	43	Washer	WASHER TYPE "PS" 18x25x1 DIN 988	3		4200
N1.6328	44	Washer	WASHER TYPE "PS" 20x28x0.2 DIN 988	1		4200
N1.6375	45	Washer	WASHER TYPE "PS" 15x21x1 DIN 988	1		4400

16.8663 Carriage 4 FS3.0229G

Part no.	RIF	Description	Specification English	Q.ty	Maintenance	Art. Group
N1.7203	46	Screw	HEAD PIN SCREW M4x14 ZINCED UNI 8112	2		4200
N1.7333	47	Screw	HEAD PIN SCREW M4x10 ZINCED UNI 8112	3	B	4200
N1.7336	48	Screw	PHILIPS HEAD SCREW 3.5x10 ZINCED UNI 9707	4		4200
N1.7339	49	Screw	HEAD PIN SCREW M5x16 ZINCED UNI 8112	6		4200
N11.1115	50	Screw	CYLINDRICAL HEAD CAP SCREWS DIN 912 M5x16 ZN	2	B	4200
N11.1127	51	Screw	CYLINDRICAL HEAD CAP SCREWS DIN 912 M5x30 ZN	4		4200
N11.1136	52	Screw	CYLINDRICAL HEAD CAP SCREWS DIN 912 M6x14 ZN	2	B	4200
N11.1147	53	Screw	CYLINDRICAL HEAD CAP SCREWS DIN 912 M5x16 ZN	4		4200
N11.6104	54	Washer	PLAIN WASHER D.15x5.3x1.2 M5 ZINCED ISO 4759/3	2		4200
N2.1112	55	Seeger	SEEGER D.17 TYPE A DIN 471	2		4400
N2.1206	56	Seeger	SEEGER FOR HOLES D.35 TYPE J	1		4200
N2.3372	57	Key	KEY 5x5x18 DIN 6885	1		4200
N2.5231	58	Spring	SPRING	2	C-E	4400
N2.6108	59	Hinge	HINGE	2		4400
N21.5120	60	Spring	SPRING D.INT.24.1 L=67.5	1	B-C	4400
N3.1147	61	Ball bearings	BALL BEARING 20x47x14 6204.2RS	1	C	4400
N3.1182	62	Ball bearings	BALL BEARING 15x35x11 6202.2RS	1	C	4400
N4.1908	63	Handle	HANDLE	1		4402
N4.1943	64	Closer	MAGNETIC CLOSER SOUTHCO 02-10-201-10	2	C	4402
N4.2210	65	Roll	ROLLS TYPE GL57 L=566MM	3	A	4402
N4.7726	66	Elet. Clutch	ELETTROMAGNETIC CLUTCH	1	A-C-E	4403
N5.2375	67	Microswitch	MICROSWITCH OMRON D3V-166-M1C5	5	C-E	4401
N5.2635	68	Photocell	PHOTOCELL RX8/00-1A	1	A-E	4403
N5.2638	68	Photocell	PHOTOCELL (BLACK FILM)	1	A-E	4403
N5.2651	68	Photocell	PHOTOCELL (BLACK GOODS)+SUPPORT FS3.2224	1	A-E	4403
N5.6701	69	Clamp	CLAMP 12 POLES	2	C	4403