



FROMM STRETCH WRAPPING SYSTEMS

COMMERCIAL TRAINING FS3xx



Model recognition FS3xx

New FS3xx Series

- Ø1.500 / Ø1.650 / Ø1800mm turntables
- Horse shoe Ø1650mm right/front/left side
- Masts 2.100 / 2.400 + 100mm for pallet overlap at top
- Max speed turntable OP1 12rpm / OP2 15rpm
- Various carriages available C1 / C2 / C4
- 3 Patents
- 2 Inverters / One for carriage and one for table
- Machine 230Volt 1 phase





FROMM WEBSITE

youremail@fromm-pack.com

.....

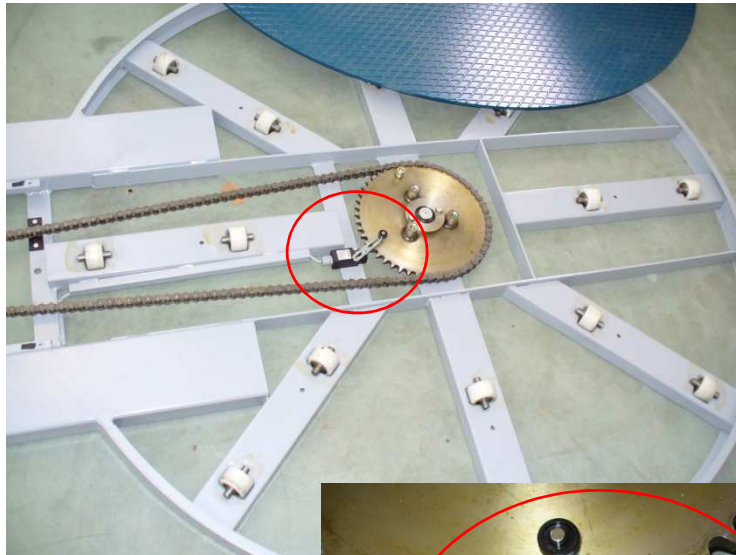
Login

WWW.FROMM-STRETCH.COM



Min

COMPETITION



Control of turntable movement.

- ▶ mechanical switch for ZERO position and regulation of bottom / top-wraps
- ▶ Max speed 10 rpm
- ▶ Risk of damage by forklift truck



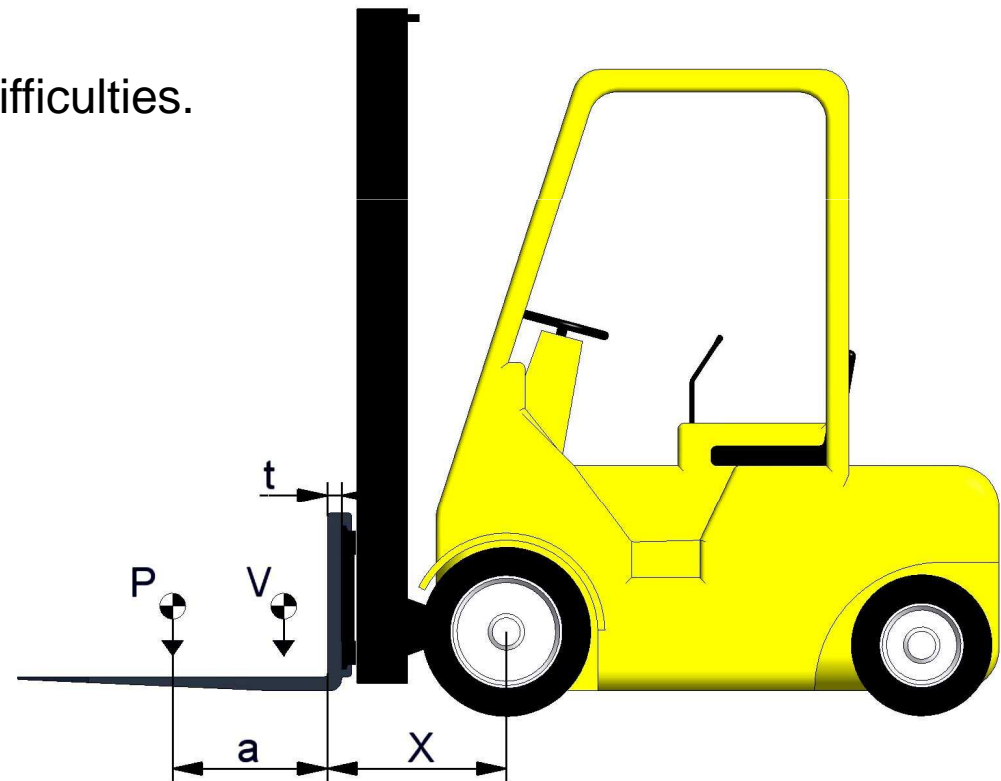
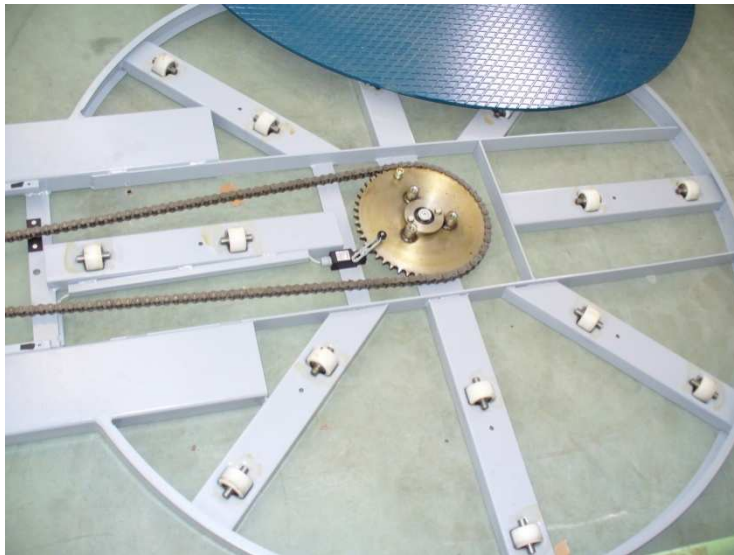


Min

COMPETITION

Sensor damage by forklift truck.

- ▶ The truck is lifting the table, the switch will be re-positioned by this action. Hereafter the machine will have difficulties. Re-finding his ZERO position.
- ▶ Service is needed.



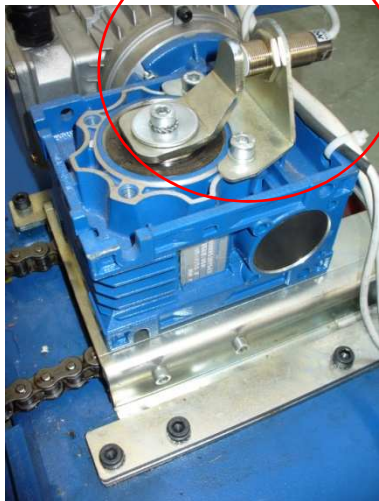


Plus FROMM FS3xx Models 2009 (PATENT FROMM)



Control of turntable movement.

- ▶ proximity sensor for ZERO position and regulation of bottom / top-wraps
- ▶ Max speed 12 rpm OP1 & 15rpm OP2



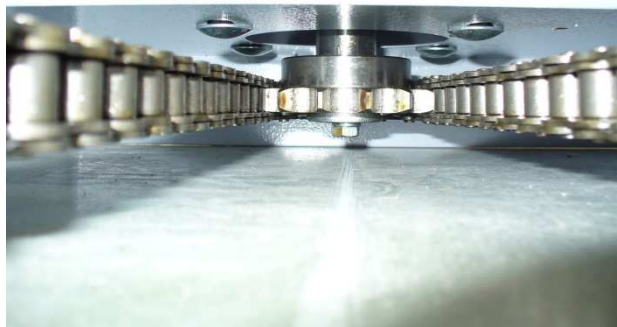


Min

COMPETITION



Gearbox fixed. Higher risk of breakdown due to high force at the turntable.





COMPETITION



No warranty. End-user pallet loading failure





Example

Oversized heavy pallets





FROMM 16.8670



No warranty.

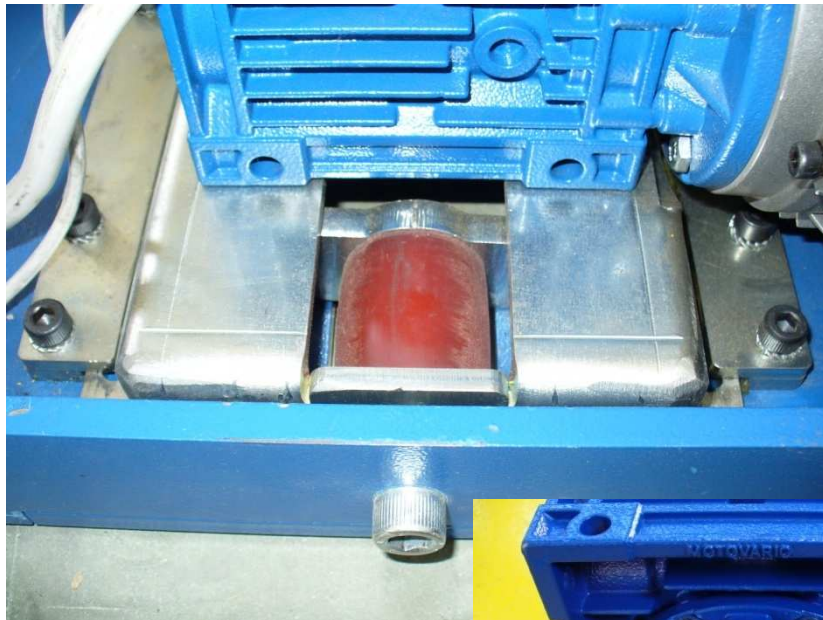
End-user pallet loading failure

- ▶ Shaft FROMM is shorter – Less risk!





Plus FROMM 16.8671 (PATENT FROMM)



Warrantee. End-user pallet loading failure

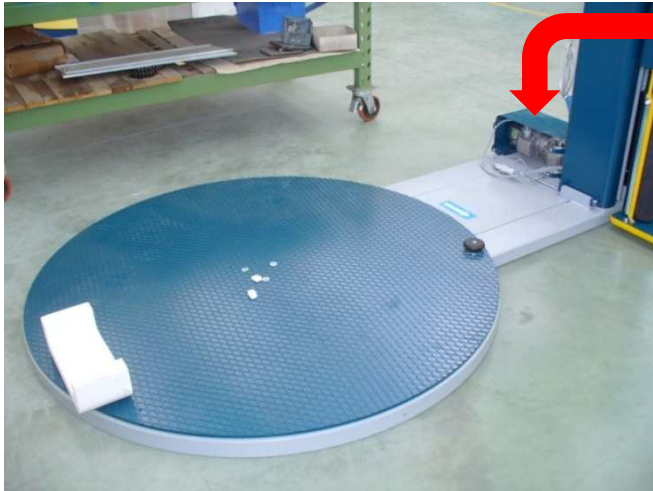
- ▶ Shaft FROMM is shorter;
- ▶ Automatic tensioning / release spring;
- ▶ Guiding plates for unit movement;
- ▶ Polygene plates for chain guiding.





Min

COMPETITION



- Motor cover not available, or weak construction.





NEW FS3xx Models 2009

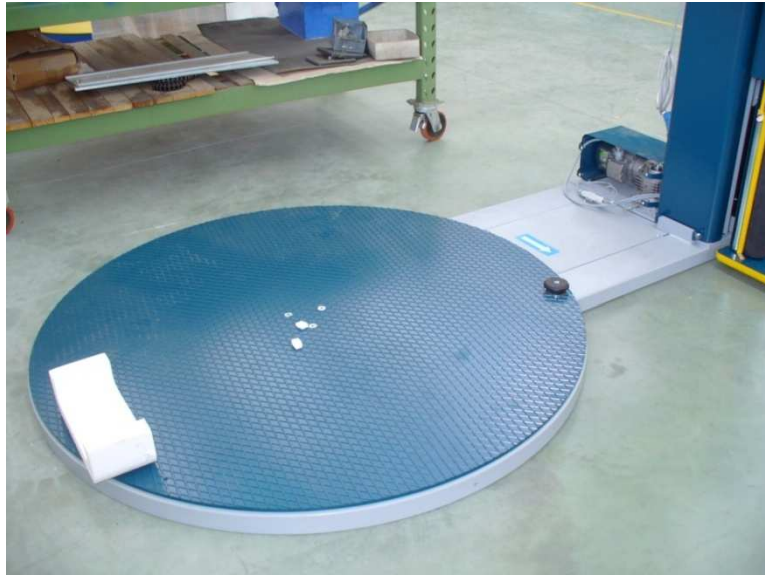
+ Motor cover strong solid construction.
Motor is well protected!





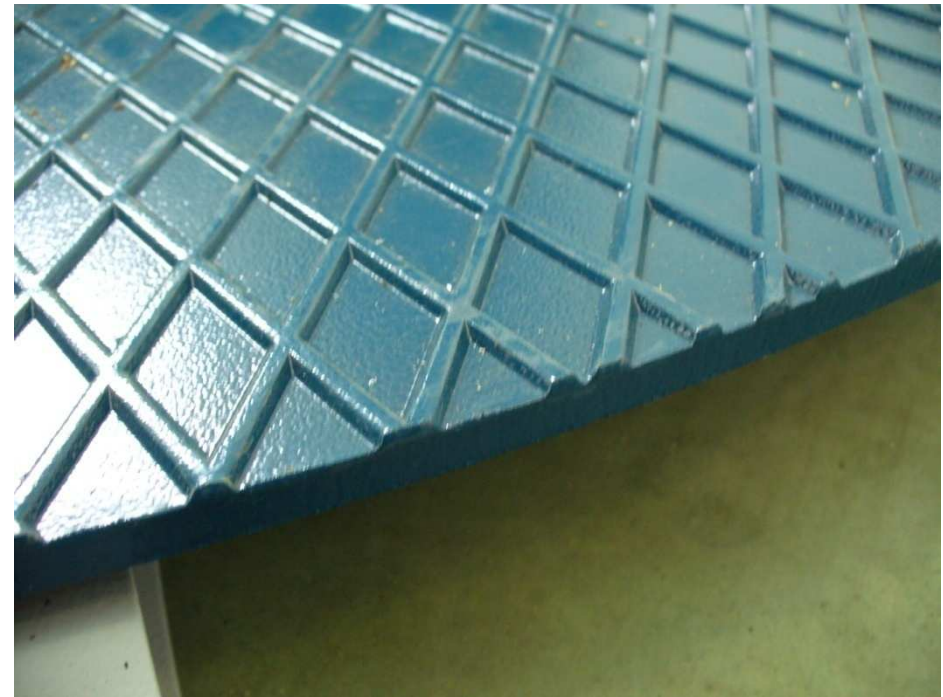
Min

COMPETITION



Turntable profiled steel.

- ▶ Less grip / less surface, not flat
- ▶ No special anti slip painting





Plus

NEW FS3xx Models 2009

Turntable sheet steel.

- ▶ More grip / more surface, flat
- ▶ With special anti slip painting





NEW FS3xx Models 2009



16.8615



16.8616



16.8617





Plus

NEW FS3xx Models 2009



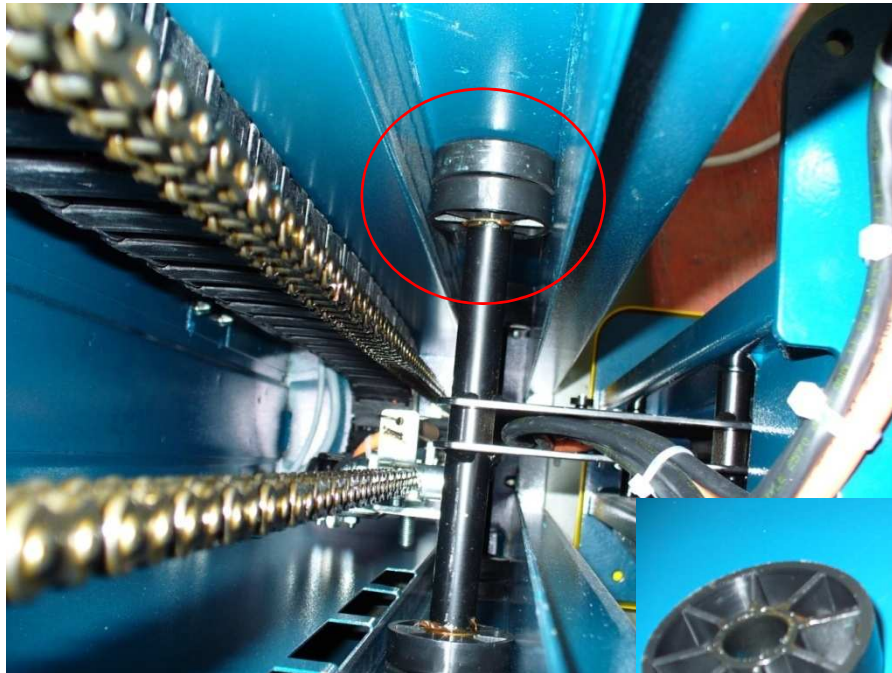
HORSE SHOE FROMM ONE BASE FITS ALL





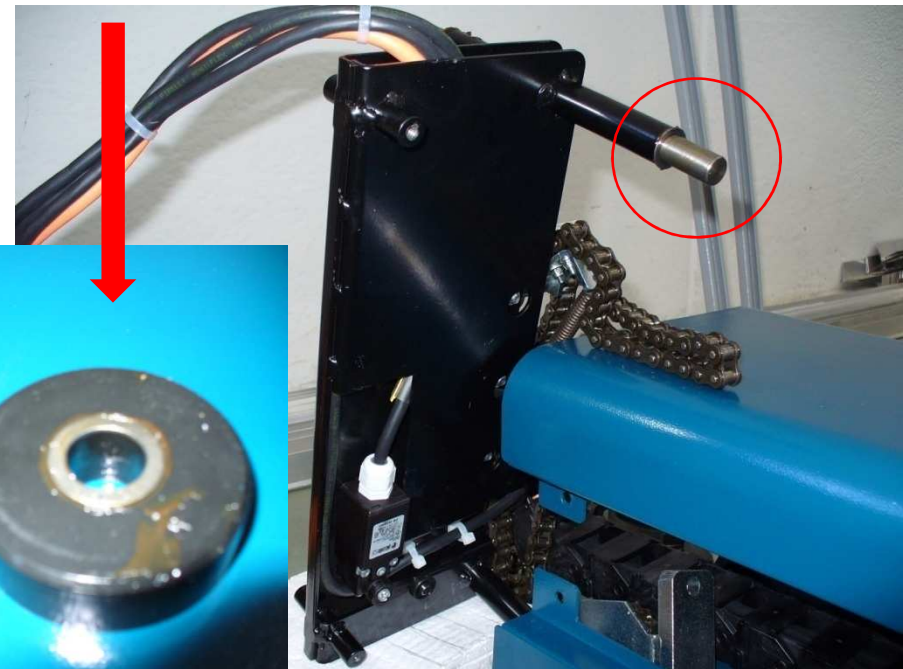
Min

COMPETITION



Wheel for carriage movement up/down.

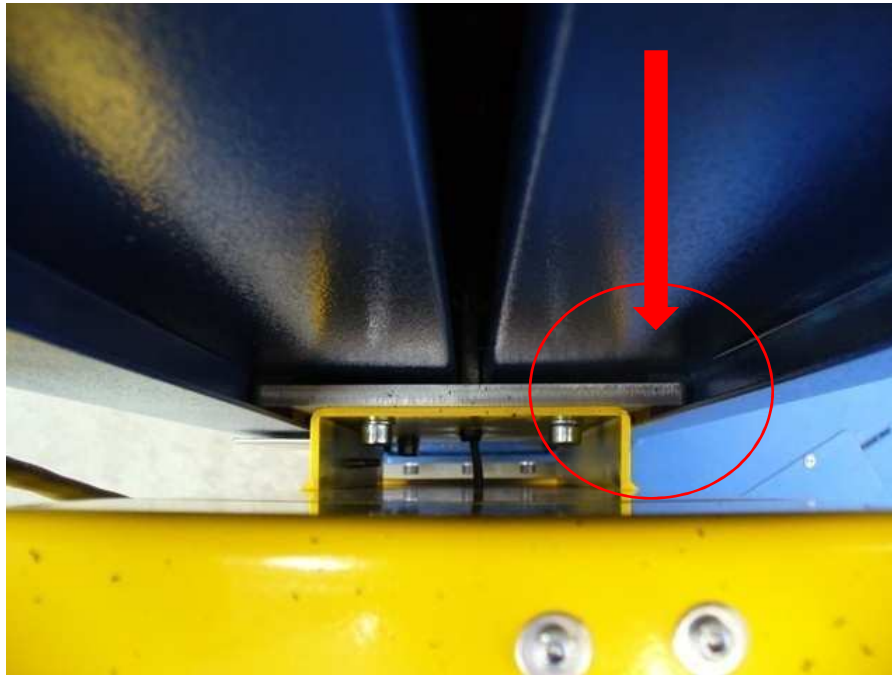
- ▶ Subject to maintenance, wheels bearings have to be greased.





Plus

NEW FS3xx Models 2009



Polizene for carriage movement up/down.

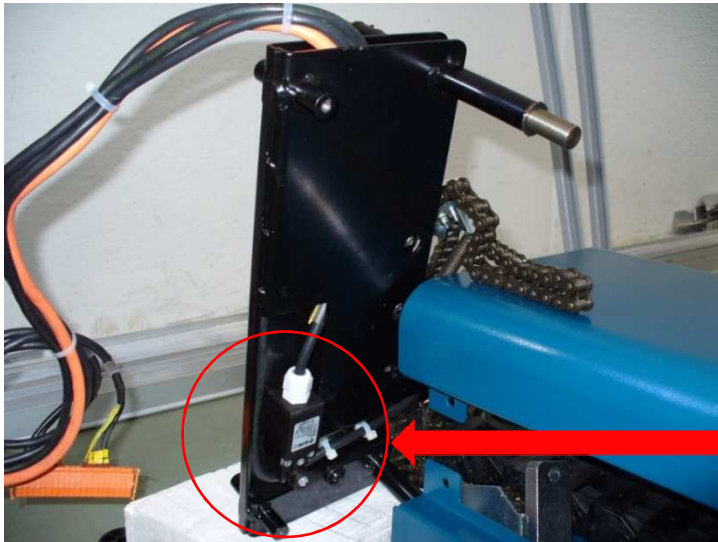
- ▶ No maintenance;
- ▶ No grease at guides or mast;





Min

COMPETITION



Mechanical switches to control movement of the carriage.

- ▶ Higher wearing on switches;
- ▶ Subject to maintenance / breakdown;
- ▶ Risk of malfunction / switch can block itself.



Plus NEW FS3xx Models 2009



Proximity sensors to control movement of the carriage.

- ▶ No wearing;
- ▶ No maintenance / breakdown;
- ▶ No risk of malfunction / sensor cannot block.
- ▶ No mechanical contact between sensor and bracket.



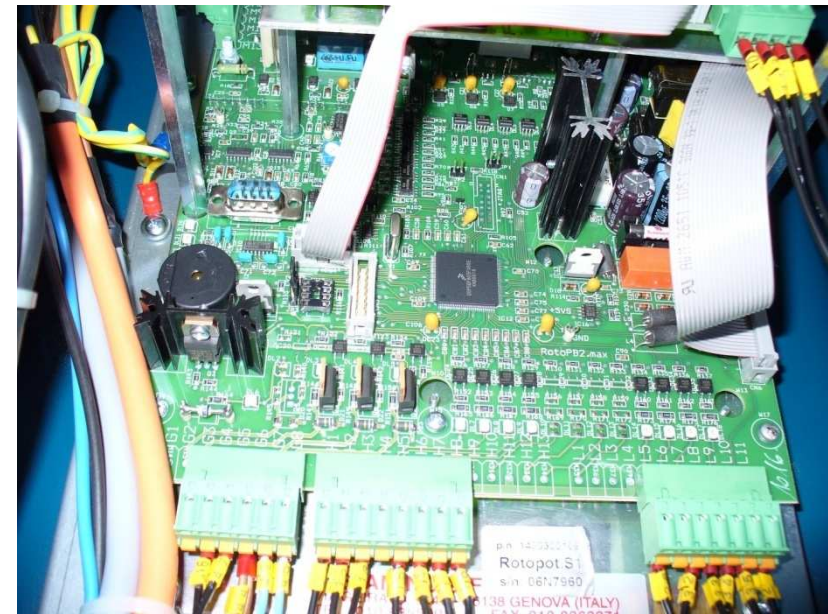
Min

COMPETITION



Manufacturer specific electrical components.

- ▶ High replacement costs, if not in warranty;
- ▶ For the end'-user impossible to source local;
- ▶ Long delivery time, if the local distributor doesn't maintain stock.





Plus NEW FS3xx Models 2009



Electrical components supplied by component specialists. (Siemens / LG / etc.)

- ▶ Easy to find at local markets;
- ▶ Innovation continues;
- ▶ Local service / warranty;
- ▶ Deliveries from stock (48Hr service).

FS3xx electrical components list:

- | | |
|-----------------------------|----------------|
| ▶ Inverters | - LG |
| ▶ Micro switches | - Pizzato |
| ▶ Electrical switches | - Siemens |
| ▶ Proximity switches | - MD Detectors |
| ▶ Control OP board | - FROMM |
| ▶ Emergency button | - Siemens |
| ▶ Main switch | - Siemens |
| ▶ Terminal circuit breakers | - Siemens |





NEW FS3xx Models 2009



CARRIAGE 1



CARRIAGE 2



CARRIAGE 4





NEW FS3xx Models 2009

Foot protection CE



WARRANTEE CONDITIONS

WARRANTEE CONDITIONS **FROMM Distributor to End-user.**

Warranty over a period of 24 months, using the machine in operation 8 hours a day, 40 hours a week. The warranty includes all deficiencies clearly resulting from poor manufacturing or faulty materials.

The warranty excludes:

- a) wearing parts.
- b) deficiencies resulting from improper stocking, incorrect handling and use as well as from using strapping / stretch film qualities not recommended by FROMM.
- c) deficiencies resulting from improper repair work made by the customer.

Warranty lapses as soon as the installation is not maintained according to supplied maintenance- and operating in-structions.

The warranty concerns the parts to be replaced, **inclusive** the necessary repair hours.

FROMM Stretchwrapping division to distributor

The warranty concerns the parts to be replaced, **exclusive** the necessary repair hours.

see conditions website www.fromm-stretch.com

Damage claims as a result of production shutdowns and claims for damage to persons and to property resulting from warranty deficiencies cannot be asserted by the customer.

WARRANTEE CONDITIONS

WARRANTEE CONDITIONS **FROMM Distributor to End-user.**

Maintenance costs

Ask your local distributor / supplier for the maintenance cost per year / service period.
Service will be provided according FROMM service conditions / contracts.

Extension of warrantee

FROMM offers the possibility to extend the warrantee to 48 Months (4 years)
The cost for this service is 8% of the value of the bought machine plus the obligation to close a service / maintenance contract with the supplier of the machine(s).

Such has to be done within 2 months after delivery of the machine.

Fill in the information at Page 3 of the maintenance booklet and send a copy of the request to service@fromm-stretch.com or Fax 0039- 045 6230 363 Att. SERVICE Stretch Wrapping Division or Preferable to the supplier of your machine.

Our service department will act immediate after receive of your information.



Plus

FROMM PATENT

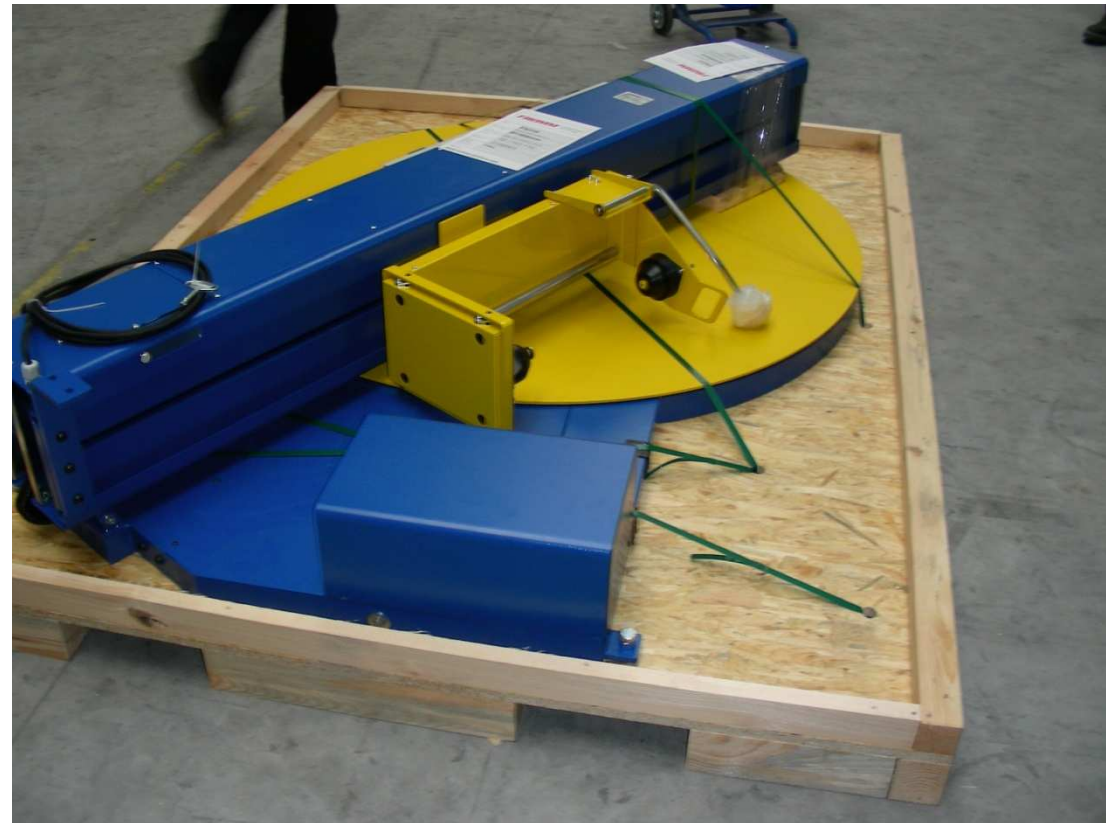
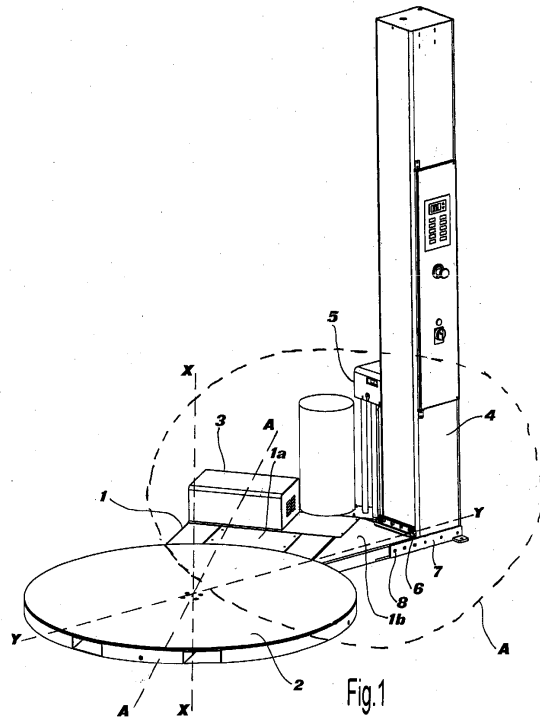


Diagonal hinged
Column.





Plus FROMM PATENT





Plus

FROMM PATENT

SAVINGS TRANSPORT COST APPROX 30%





Exhibition program



← Press 5 seconds and exhibition program is active



← Press to exit

The machines are continuously running
Special used on exhibitions in order to
show all movements.





Thanks for your attention