

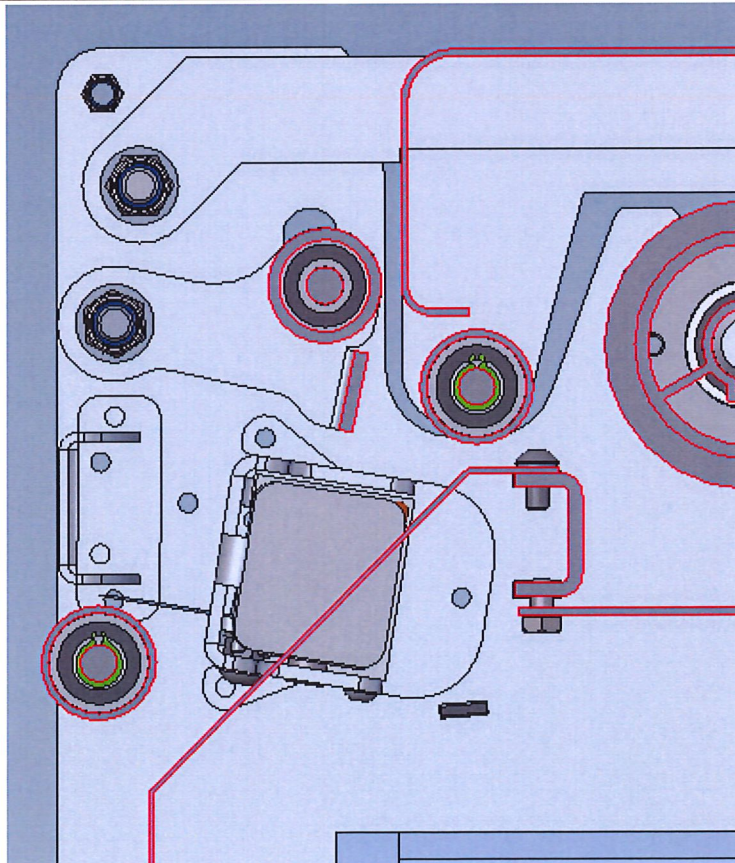
FROMM

**Cutting Device
Series FR3xx/FR4xx**

Item No FR3.1281

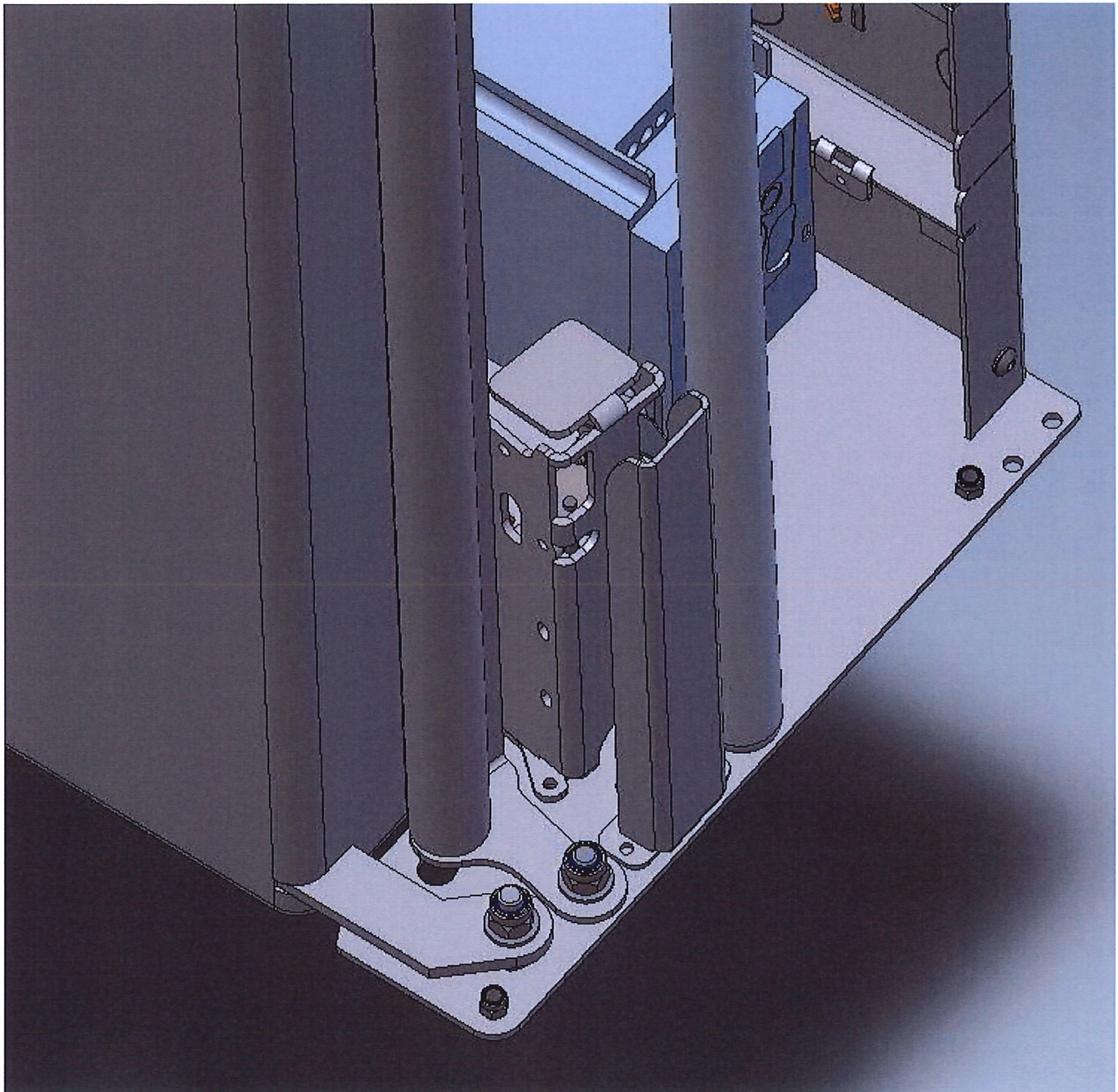
Installation FR3.1281.02

TDS-New cutting device FR39x/FR400



The holes there are already in the carriage and the electrical connections are the same like the old cutting device.

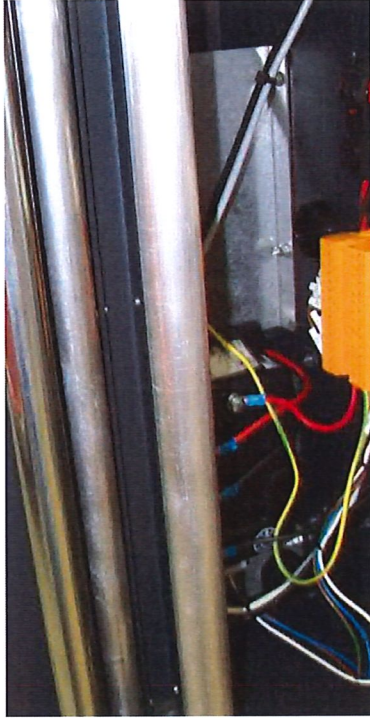
La foratura è già presente e i collegamenti elettrici sono identici al vecchio modello.



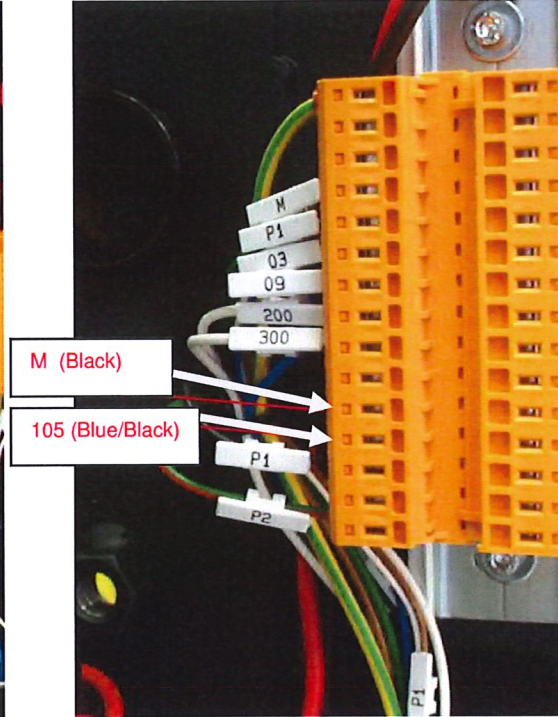
Please, remove the bottom carter of the carriage and connect the cables.

Here below you can see the pictures to connect the cables from cutting device to terminals of the carriage.

It is not important that you respect the color of the cables, you can put as you want, the important thing is to go to these two terminals.



Picture 1



Picture 2

Now, you have to put the function **F26=1** (cutting device on)

Attention:



if you have bought the Robot before 01/01/2012, you have to change also the Eeprom.

Please, to be sure, communicate the Serial Number and the Article Number of the Robot to service department FROMM.

CONFIGURATION MACHINE

The machine configuration is a menu that simplifies configuration of machine and through this it is possible with ease add the optional as cut device, carriage, ect.

Procedure:

Turn off the machine, if it's on, and pressing hold the up arrow  and turn on  the machine. In "F" display you can will see "OP" and in "V" display you can will see the options that you can enable. To enable the optional viewed press the RESET button until the reset led is flashing, the "V" display will show SET.
Press rotation button or pause button for go out to configurator.

The entries in the configurator are as follows:

FN = For setting the FM carriage

FE = For setting the FE carriage

PrS = For setting the PRS carriage

PS = For setting the PS carriage

HOL = For settign the pressure plate device (only wrapper table version)

Cut = For setting the cut device on carriage

PF = For setting the weight film sensor on carriage

rOP = For setting the roping device on carriage

CON = For setting the compass device (only wrapper robot version)

rPL = For setting the robot with lifting tree carriage (only wrapper robot version)

r20 = For setting the robot with lifting arm carriage 2000 (only wrapper robot version)

r22 = For setting the robot with lifting arm carriage 2200 (only wrapper robot version)

r24 = For setting the robot with lifting arm carriage 2400 (only wrapper robot version)

NPL = For setting the table with lifting tree carriage (only wrapper table version)

M22 = For setting the table with lifting arm carriage (only wrapper table version)

CLr = for resetting to 0 all setting of the configurator.