

FROMM

**ELS FS390 FROMM
TURNTABLE STRETCH MACHINE
Carriage 2 motors
ELS.1134
Version 02 machines**

Print date _ Wednesday 19 October 2022 / © 10/22

MODEL : FROMM FS 390

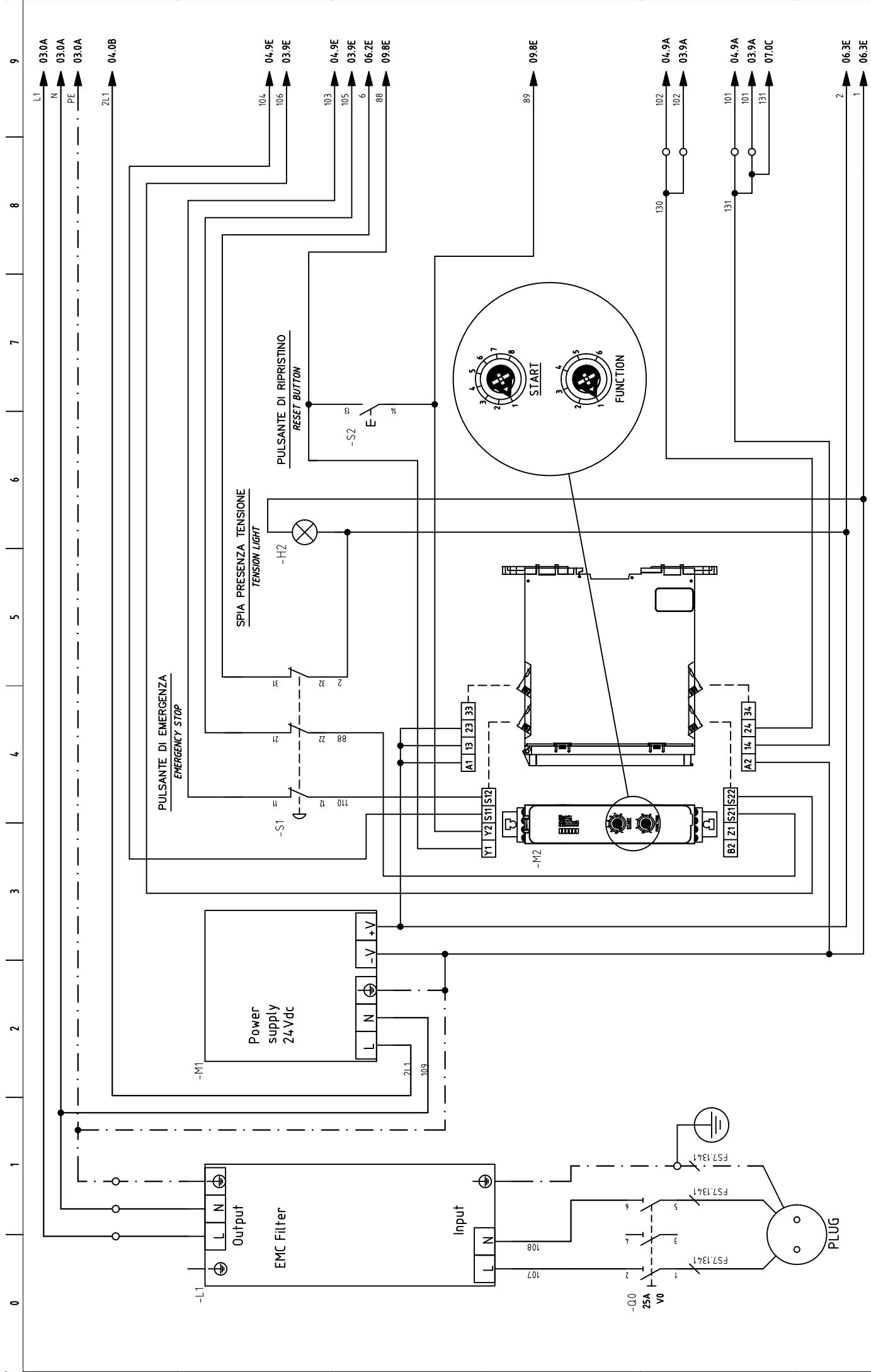
PROGETTO
BANCA DIS.
TIPOICO

Copying of this document, and giving it to other and the use or communication of the contents thereof, are forbidden without express authority. Offenders are liable to the payment of damages. All rights are reserved in the event of the grant of a patent or the registration of a utility model or design.

KIND OF CIRCUIT		COLORS CONDUCTORS	MINIMUM SECTION
POWER CONDUCTORS AC		BLACK	N07V-K/1,5mm ²
NEUTRAL CONDUCTORS		LIGHT BLUE	N07V-K/1,5mm ²
POWER CONDUCTORS DC		GRAY	N07V-K/0,75mm ²
CONTROLS / SIGNALS DIRECTING CURRENT	24V DC	BLUE	N07V-K/0,75mm ²
GROUND CONDUCTORS		YELLOW-GREEN	N07V-K/1,5mm ²
		FROMM	
DATA	11/10/2022		
DISEGN.	SCIENZA S.		
VISTO			
APPR.			
DATA	FIRMA		
MODIFICA			
REV.			
		SOST. IL :	SOST. DA :
		FROMM	
		FS390	
		FILE : ELS.1134.dwg	

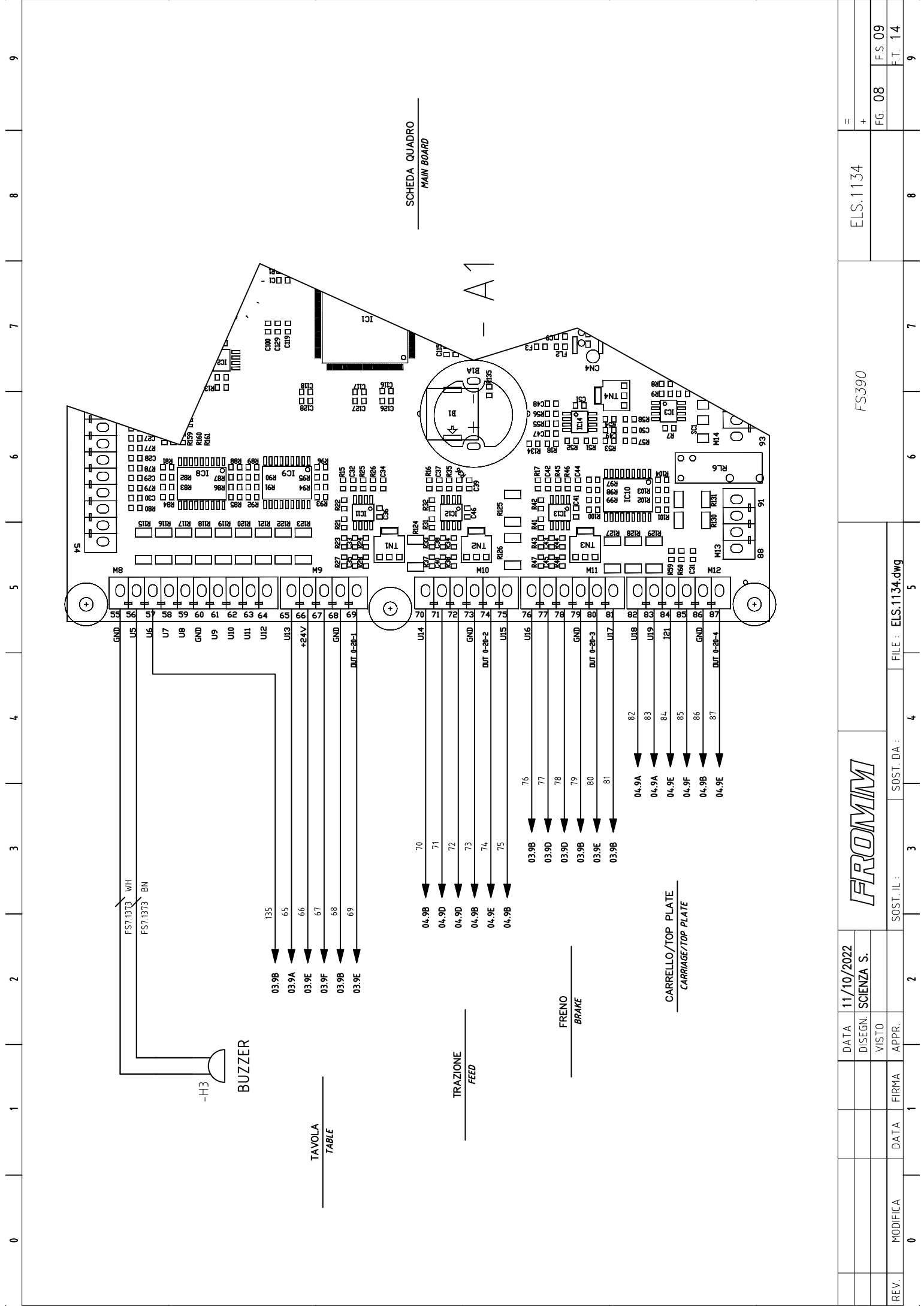
TENSIONE POWER SUPPLY	230V ac
POTENZA INSTALLATA INSTALLED POWER	1,5kW
CORRENTE CURRENT	6,5A
FROMM	
ELS.1134	
FROMM ITALIANA s.r.l. Caprino Veronese (VR) ITALY	
FOGLIO	
1	
T.F. 14	
FILE : ELS.1113.dwg	

FROMM	
FS390	
FILE : ELS.1134.dwg	
E	
+	
FG. 01	
F.S. 02	
F.T. 14	



REV.	MODIFICA	DATA	FIRMA	APPR.	SOST. IL :	SOST. DA :	FILE : ELS.1134.dwg
0					2	3	4

DATA		11/10/2022		FS390		ELS.134	
DISEGN.		SCIENZA S.					
VISTO							
APPR.							
FIRMA							
MODIFICA							
REV.							
0							
1							
2							
3							
4							
5							
6							
7							
8							
9							



REV.	MODIFICA	DATA	FIRMA	APPR.	0	1	2	3	4	5	6	7	8	9

											E.LS.1134		=			
											+		F.G. 08		F.S. 09	
													F.T. 14		9	

											FS390					
--	--	--	--	--	--	--	--	--	--	--	-------	--	--	--	--	--

											FROMM					
--	--	--	--	--	--	--	--	--	--	--	-------	--	--	--	--	--

											DATA		11/10/2022			
											DISEGN.		SCIENZA S.			
											VISTO					

											SOST. IL :		FILE : ELS.1134.dwg			
											SOST. DA :					

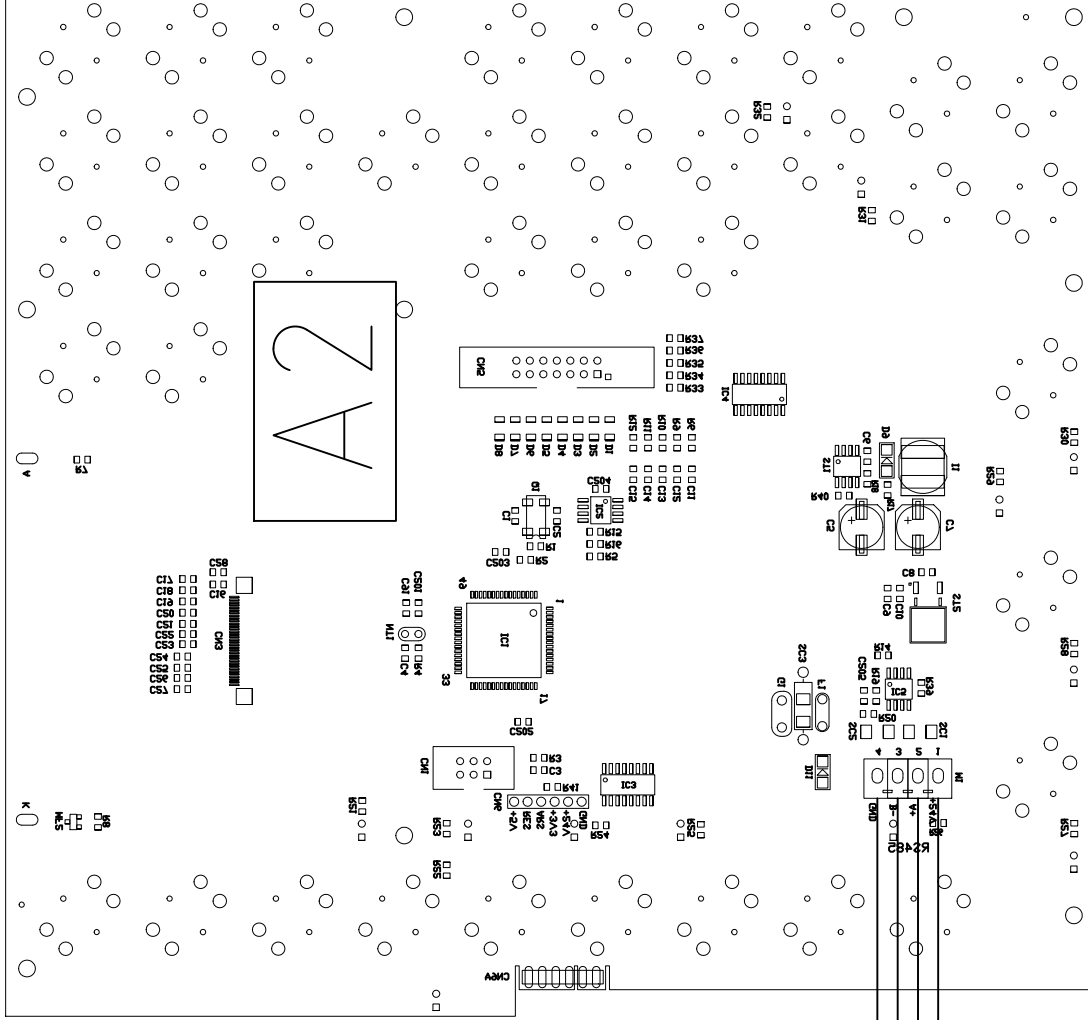
											0		2		3		4		5		6		7		8		9	
--	--	--	--	--	--	--	--	--	--	--	---	--	---	--	---	--	---	--	---	--	---	--	---	--	---	--	---	--

											A		B		C		D		E		F	
--	--	--	--	--	--	--	--	--	--	--	---	--	---	--	---	--	---	--	---	--	---	--

TASTIERA
KEYBOARD

A2

N52.7101



RS 485 VIDEO BOARD



DATA 11/10/2022
DISEGN. SCIENZA S.
VISTO



FS390

ELS.1134

= +

REV.	MODIFICA	DATA	FIRMA	APPR.
------	----------	------	-------	-------

SOST. IL :

SOST. DA :

FILE : ELS.1134.dwg

FG. 10	F.S. 11
F.T. 14	

8

7

6

5

4

3

2

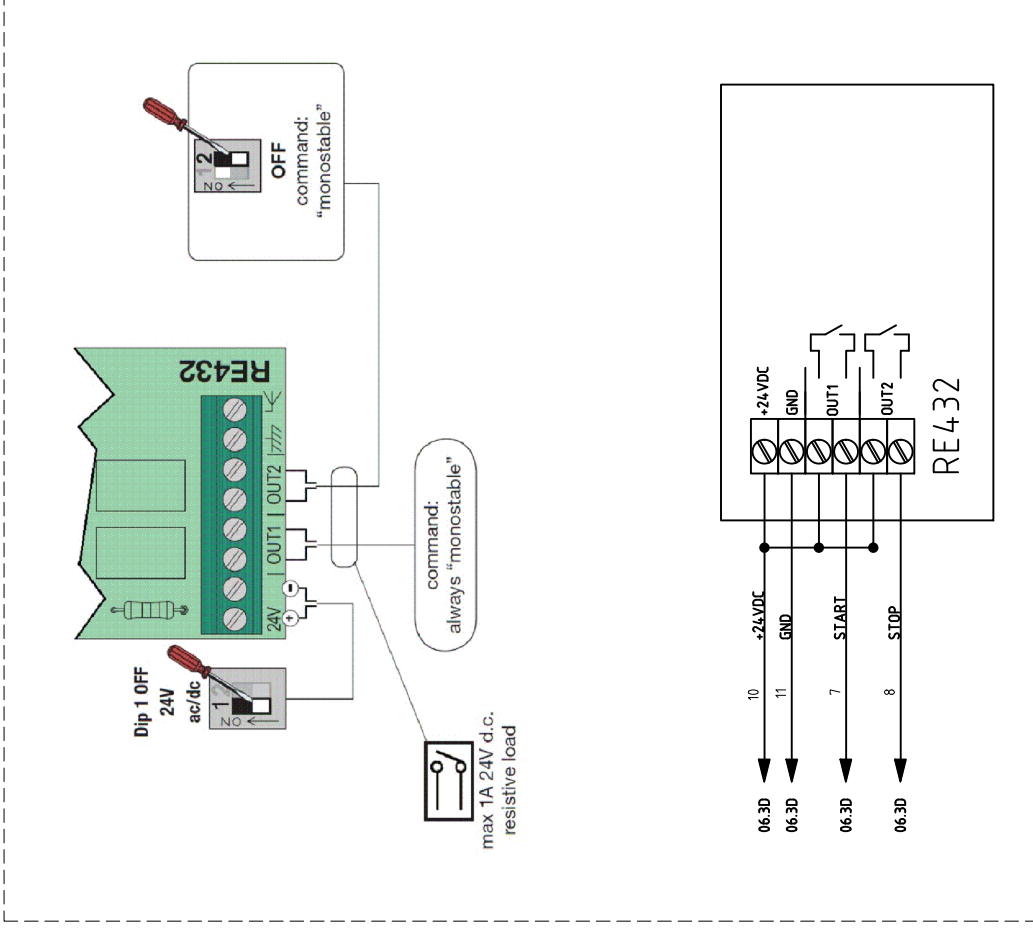
1

0

F

9

RADIO REMOTE CONTROL



OPZIONALI
OPZIONALI

FROMMM

FS390

ELS.1134

DATA 11/10/2022

DISEGN. SCIENZA S.

VISTO

APPR.

SOST. IL :

SOST. DA :

FILE : ELS.1134.dwg

REV. MODIFICA

DATA

FIRMA

APPR.

0

1

2

3

4

5

6

7

8

9

=

+

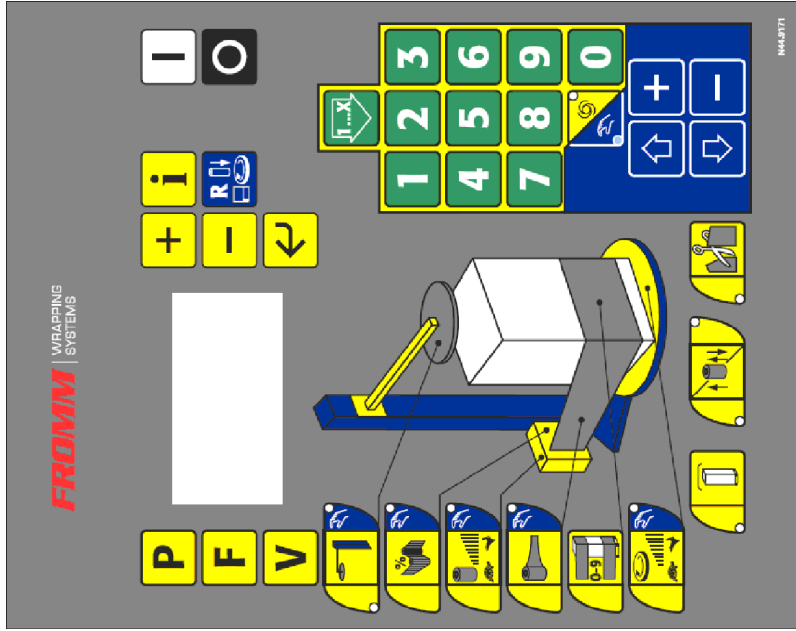
Fg. 11

F.S. 12

F.T. 14

9

TASTIERA
KEYBOARD

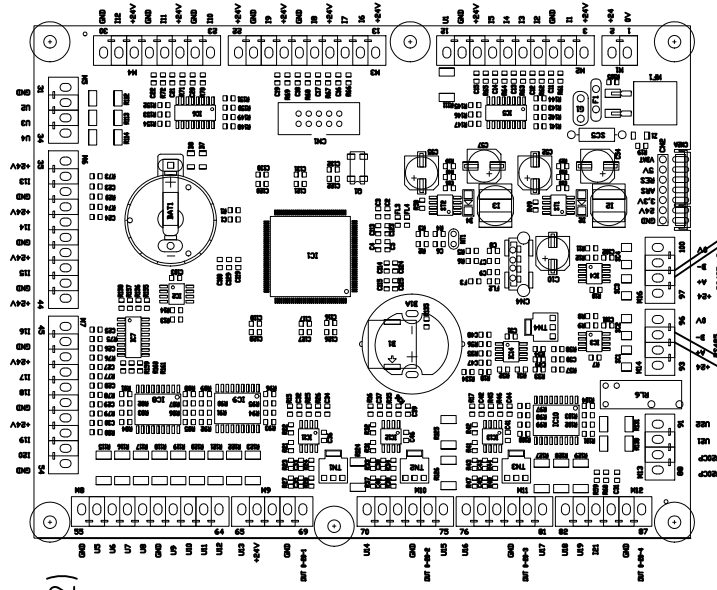


N44.9171

+

N52.7101 (-A2)

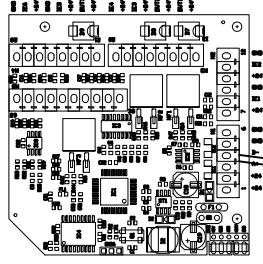
SCHEDA QUADRO
MAIN BOARD



N51.7199 (-A1)

SCHEDA REMOTATA
REMOTE BOARD

N52.7102
(-A3)



FS7.1516

FS7.1340

FS7.1517

(height column 2250, 2500mm)

OR

FS7.1507

(height column 2800, 3050mm)

DATA 11/10/2022

DISEGN. SCIENZA S.

VISTO

APPR.

FIRMA

DATA

MODIFICA

FROMM

SOST. IL :

SOST. DA :

FILE : ELS.1134.dwg

FS390

ELS.1134

FIG. 12

F.S.13

F.T. 14

9

8

7

6

5

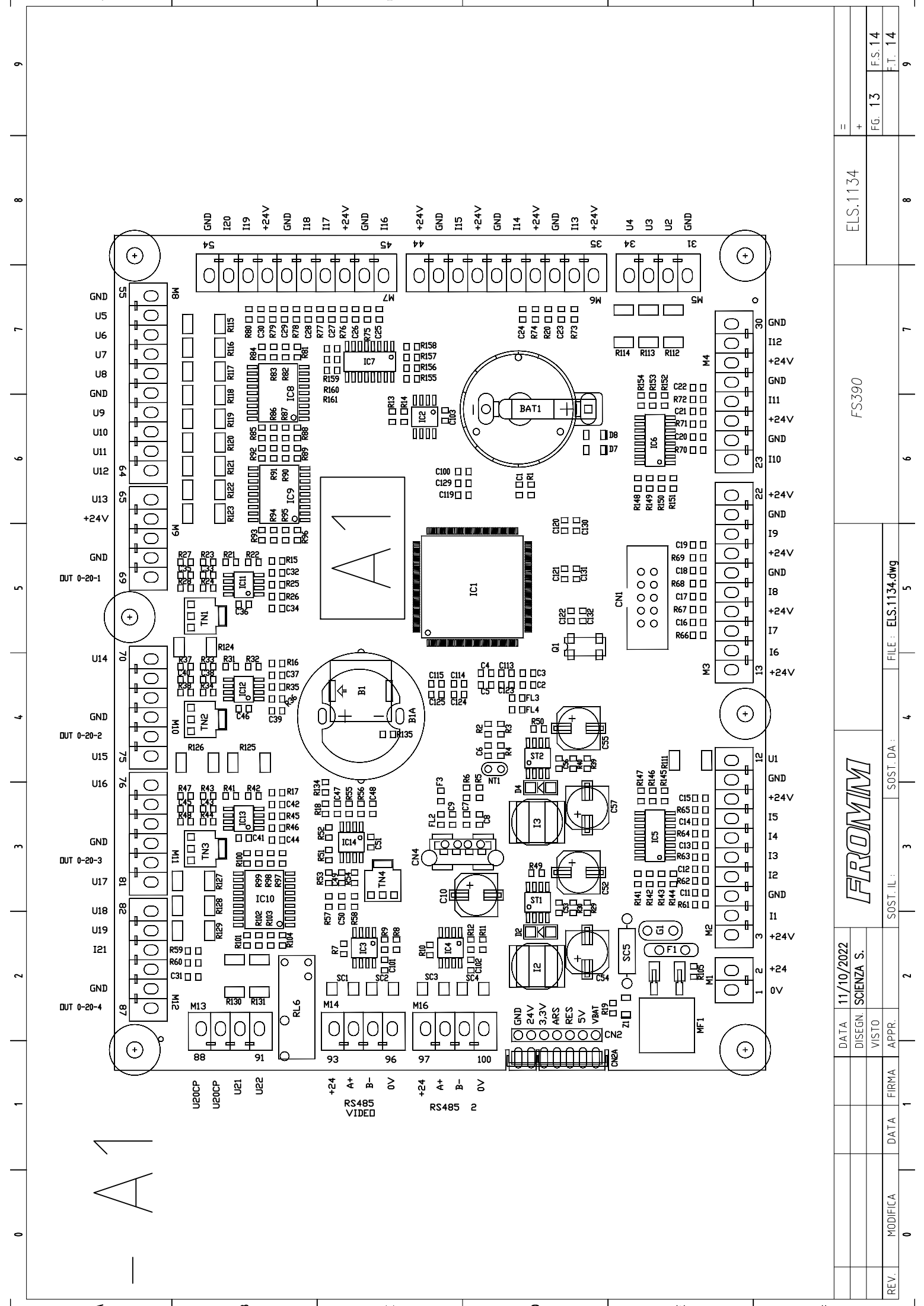
4

3

2

1

0



REV.	MODIFICA	DATA	FIRMA	APPR.	0
					1
					2
					3
					4
					5
					6
					7
					8
					9

FILE : ELS.1134.dwg

SOST. IL : 3

SOST. DA : 4

DATA 11/10/2022

DESIGN. SOENZA S.

VISTO

FSC390

ELS.1134

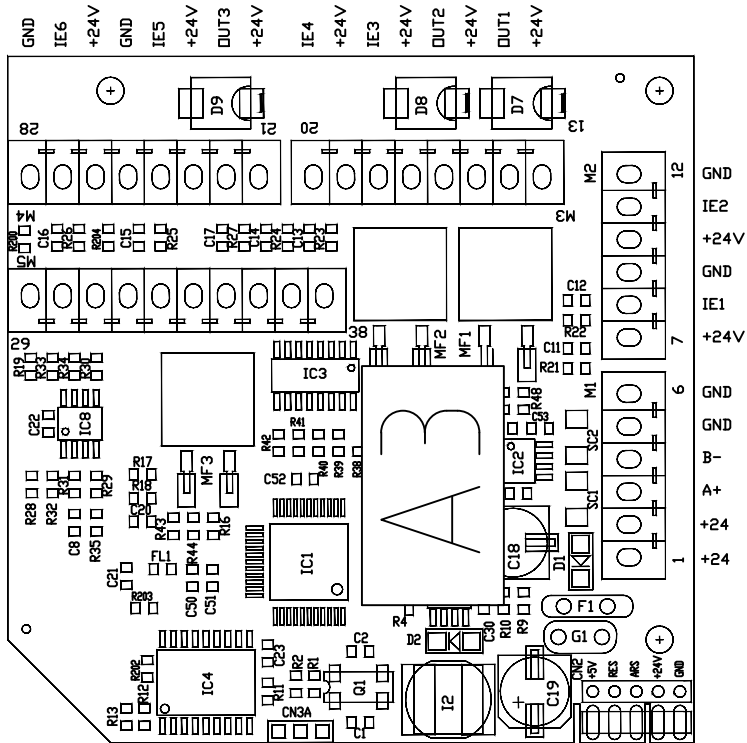
F.S.14

F.T. 14

A

29	+5VCEL
	IN+
	IN-
	GND
	SHIELD
	+24V
	IA1
	GND
	+24V
38	IE7

A3



REV.	MODIFICA	DATA	FIRMA	APPR.	2	3	4	5	6	7	8	9
		DATA	11/10/2022									
		DISEGN.	SCIENZA S.									
		VISTO										
		APPR.										
		FILE :	ELS.1134.dwg									



FSS390

ELS.1134

=	
+	
	FG. 14
	F.S. 01
	F.T. 14