

FROMM

**ELS FS390 FROMM
TURNTABLE STRETCH MACHINE
Carriage 1 motor
ELS.1135
Version 02 machines**

Print date _ Wednesday 19 October 2022 / © 10/22

MODEL : FROMM FS 390

Carriage with one motor and gear ratio

PROGETTO
BANCA DIS.
TPICO
Copying of this document, and giving it to other and the use or communication of the contents thereof, are forbidden without express authority. Offenders are liable to the payment of damages. All rights are reserved in the event of the grant of a patent or the registration of a utility model or design.

KIND OF CIRCUIT	COLORS CONDUCTORS	MINIMUM SECTION	FROMM			
			DATA	14/10/2022	SOST. IL :	SOST. DA :
POWER CONDUCTORS AC	BLACK	N07V-K/1,5mm ²	DISIGN.	SCIENZA S.	FILE : ELS.1135.dwg	
NEUTRAL CONDUCTORS	LIGHT BLUE	N07V-K/1,5mm ²	VISTO			
POWER CONDUCTORS DC	GRAY	N07V-K/0,75mm ²	APPR.			
CONTROLS / SIGNALS DIRECTING CURRENT	BLUE	N07V-K/0,75mm ²	FIRMA			
GROUND CONDUCTORS	YELLOW-GREEN	N07V-K/1,5mm ²	DATA			

KIND OF CIRCUIT		COLORS CONDUCTORS		MINIMUM SECTION	
POWER CONDUCTORS AC	230V ac	BLACK	N07V-K/1,5mm ²	POWER SUPPLY	TENSIONE
NEUTRAL CONDUCTORS	1kW	LIGHT BLUE	N07V-K/1,5mm ²	INSTALLED POWER	POTENZA INSTALLATA
POWER CONDUCTORS DC	4A	GRAY	N07V-K/0,75mm ²	CURRENT	CORRENTE
CONTROLS / SIGNALS DIRECTING CURRENT	FROMM ITALIANA S.r.l. Caprino Veronese (VR) ITALY	BLUE	N07V-K/0,75mm ²		
GROUND CONDUCTORS		YELLOW-GREEN	N07V-K/1,5mm ²		

FROMM

ELS.1135

FS390
carriage with one motor and gear ratio

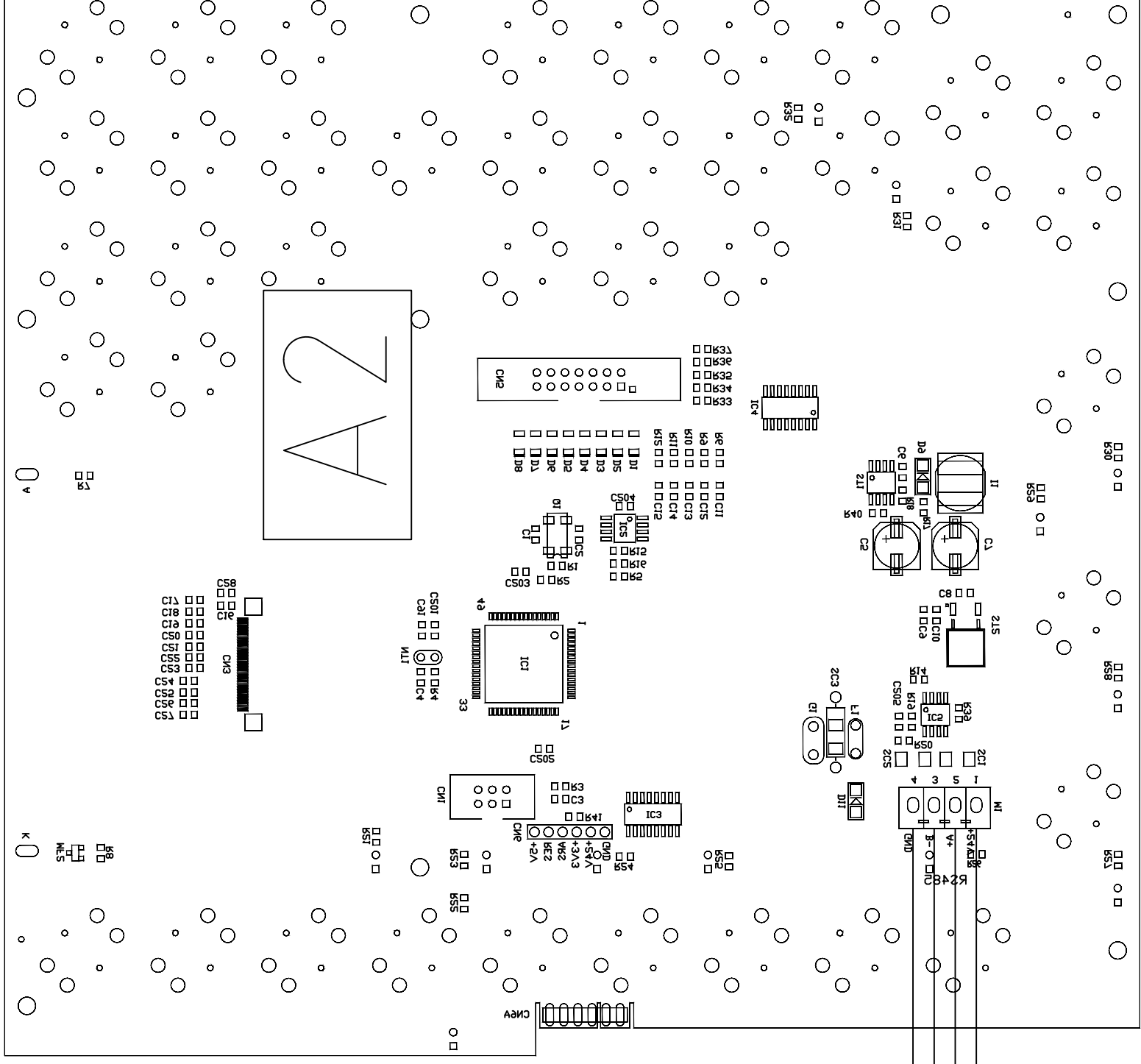
FROMM

REV.	MODIFICA	DATA	FIRMA	APPR.	VISTO	DISIGN.	DATA	SOST. IL :	SOST. DA :	FILE :	REV.	REV.	REV.
							14/10/2022	SCIENZA S.		ELS.1135.dwg	ELS.1135	FG. 01	F.S. 02
												F.T. 14	F.T. 14

TASTIERA
KEYBOARD

A2

N52.7101



RS 485 VIDEO BOARD



REV.	MODIFICA	DATA	FIRMA	APPR.	SOST. IL :	SOST. DA :	FILE : ELS.1135.dwg	Carriage with one motor and gear ratio	ELS.1135	=	+	FG. 10	F.S. 11	F.T. 14
0					2	3	4	5	6	7	8	9		

FROMM

FS390

Carriage with one motor and gear ratio

ELS.1135

=

+

FG. 10

F.S. 11

F.T. 14

0

1

2

3

4

5

6

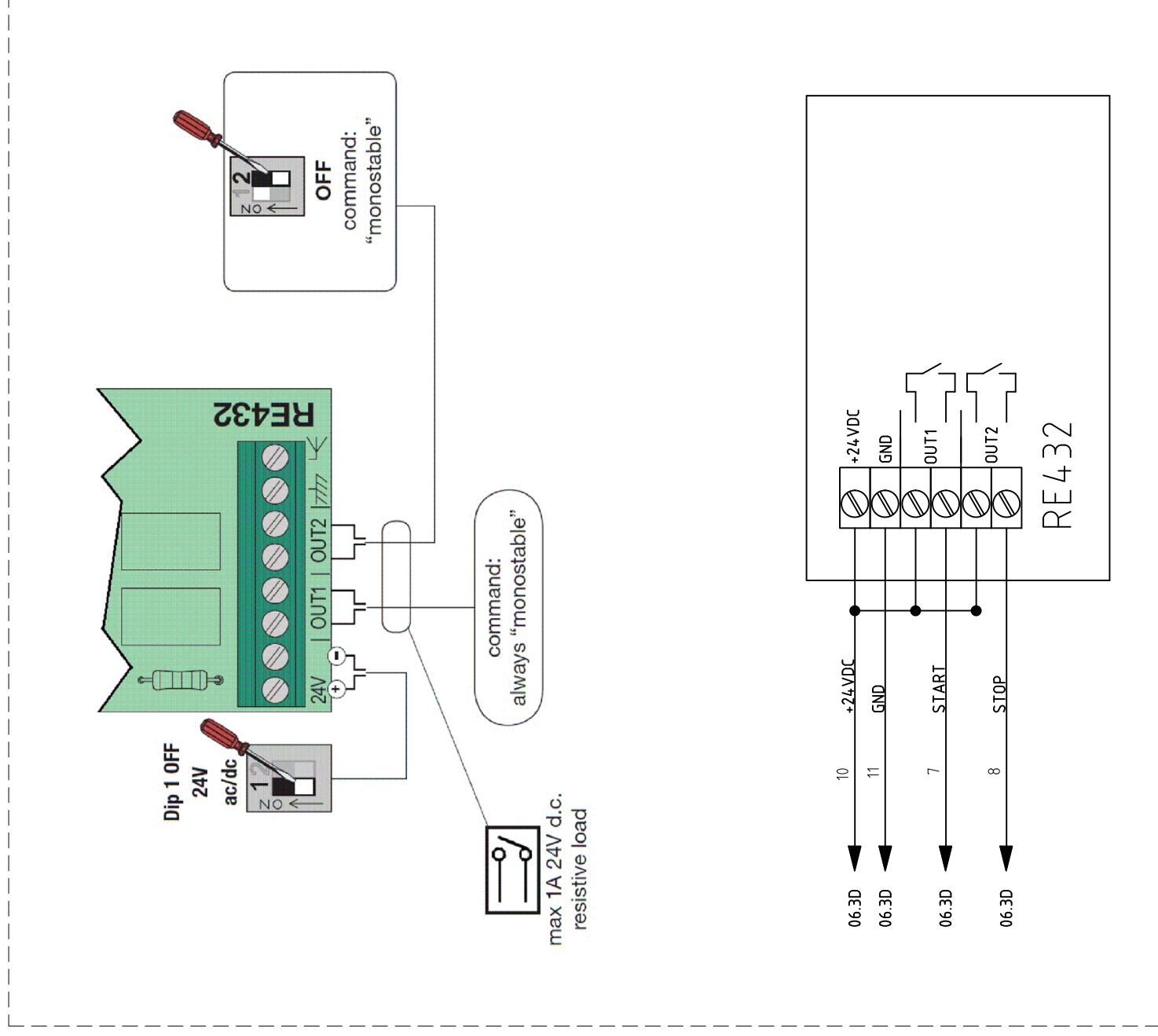
7

8

9

RADIO REMOTE CONTROL

OPZIONALI
OPZIONAL



DATA 14/10/2022
DISEGN. SCIENZA S.
VISTO
APPR.

FROMMM

REV. MODIFICA DATA FIRMA
SOST. IL : SOST. DA : FILE : ELS.1135.dwg

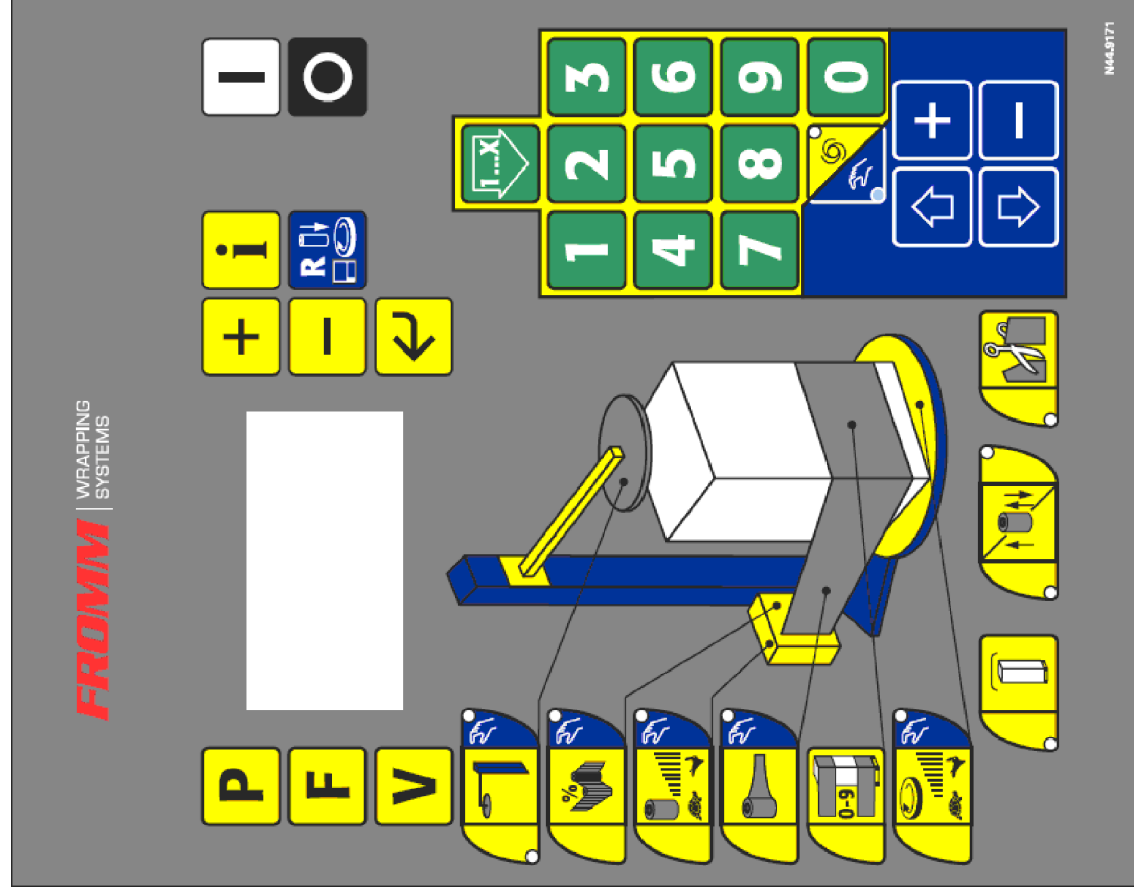
FS390 carriage with one motor and gear ratio

ELS.1135

=	
+	
FG. 11	F.S. 12
	F.T. 14

0	1	2	3	4	5	6	7	8	9
A	B	C	D	E	F				

TASTIERA
KEYBOARD

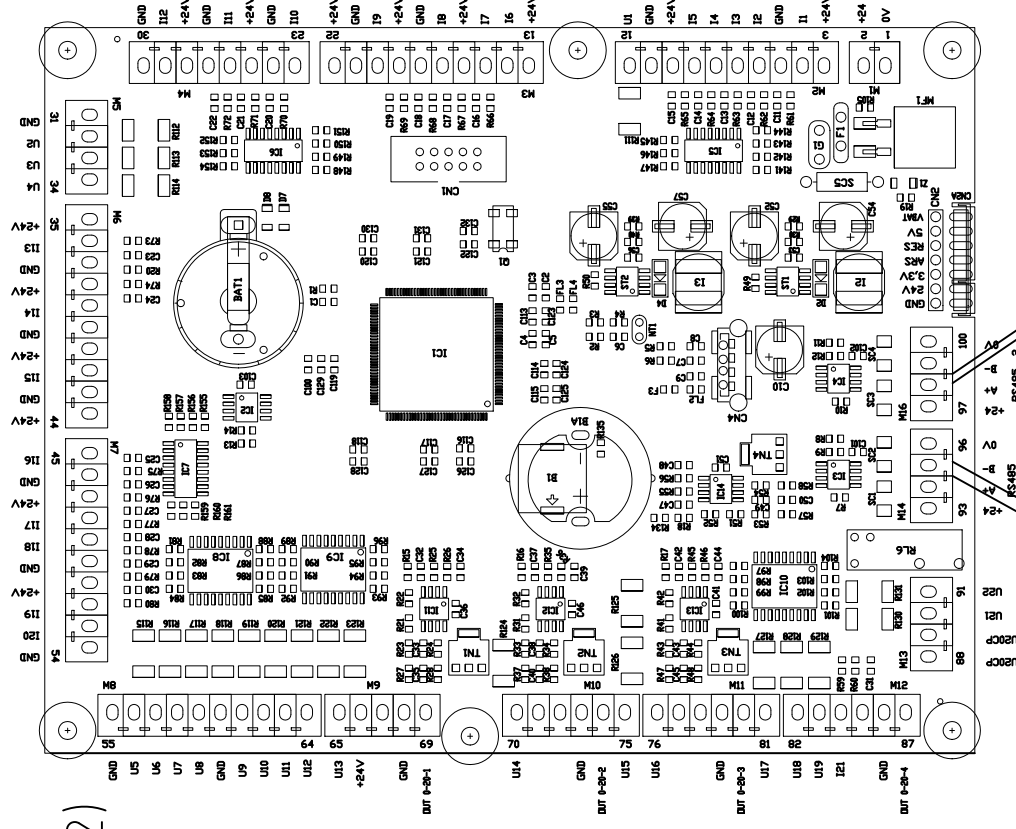


N44.9171

+

N52.7101 (-A2)

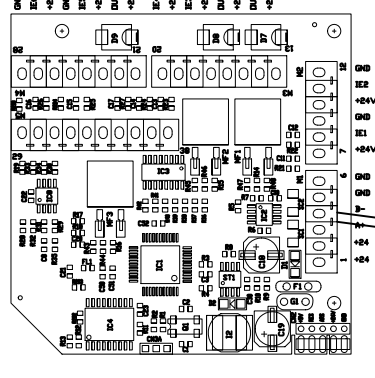
SCHEDA QUADRO
MAIN BOARD



N51.7199 (-A1)

SCHEDA REMOTATA
REMOTE BOARD

N52.7102
(-A3)



FS7.1516

FS7.1340

FS7.1517

(height column 2250, 2500mm)

OR

FS7.1507

(height column 2800, 3050mm)

DATA 14/10/2022

DESIGN. SCIENZA S.

VISTO

APPR.

DATA

FIRMA

MODIFICA

FROMM

FS390

carriage with one motor and gear ratio

ELS.1135

=

+

FG. 12

F.S. 13

F.T. 14

0

1

2

3

4

5

6

7

8

9

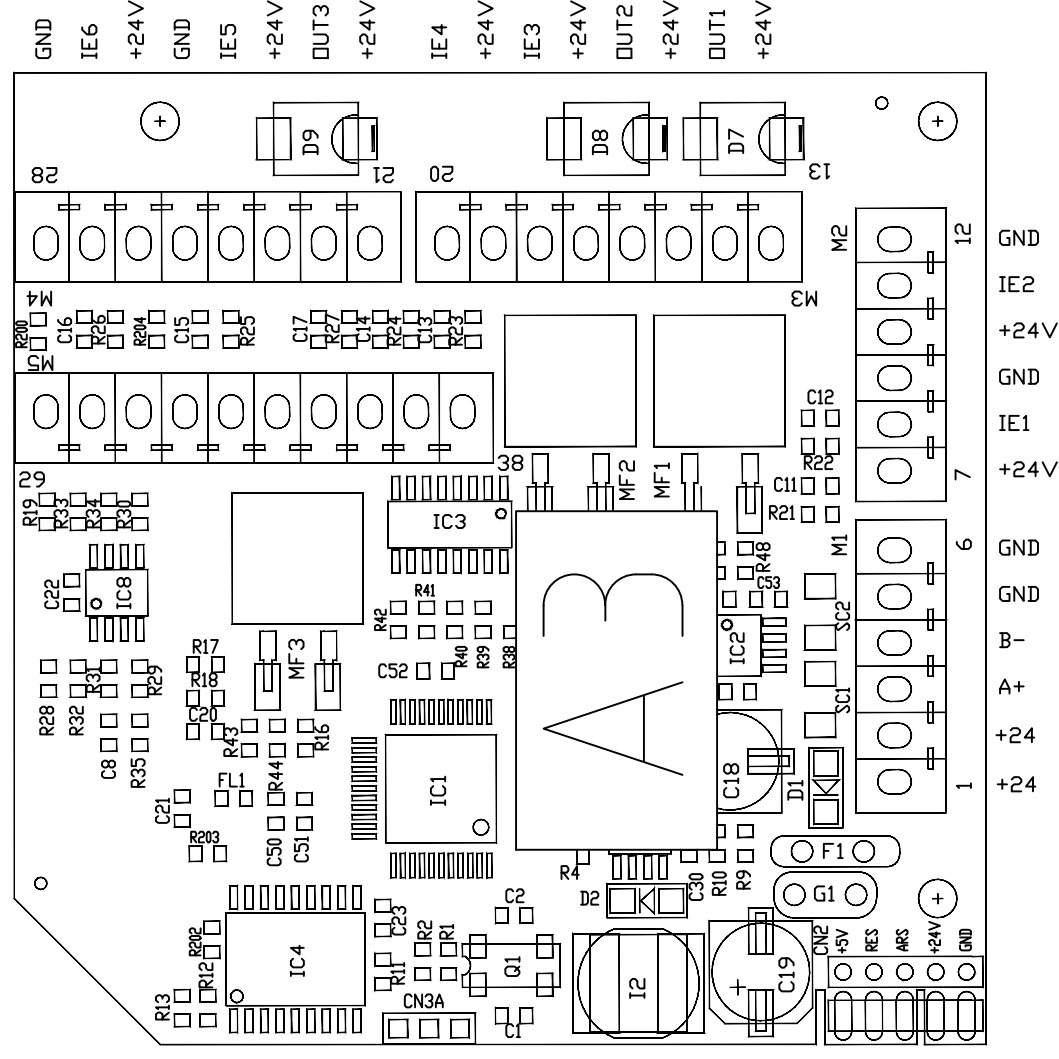
FILE : ELS.1135.dwg

SOST. IL :

SOST. DA :

29	+5VCEL
	IN+
	IN-
	GND
	SHIELD
	+24V
	IA1
	GND
	+24V
38	IE7

A3



FROMM

DATA 14/10/2022
 DESEGN. SCIENZA S.
 VISTO
 APPR.

SOST. IL : SOST. DA : FILE : ELS.1135.dwg

FS390 carriage with one motor and gear ratio

ELS.1135

=
+
FG. 14
F.S. 01
F.T. 14